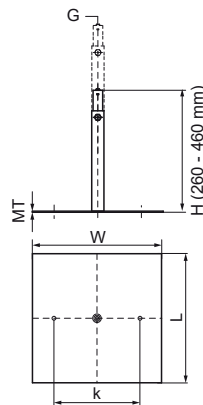
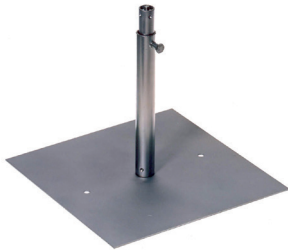


# Walraven Supports for Spiral Duct

(F2505)

supports of spiral ducts



## Features & benefits

- the spiral tube can be connected to the support by use of suspension band
- with height-adjustable stand with M8-connection (male thread)
- material: steel
- base plate pre-galvanized; stand zinc plated

Product Number	Connection Thread	Total Width x Total Height x Total Length	Material Thickness	Heart To Heart Distance	Maximum Allowed Load $F_{a,z}$
Reference letter	G	$W \times H \times L$	MT	k	$F_{a,z}$
Unit description		mm x mm x mm	mm	mm	N
4125031	M8	100 x 260 x 150	2.00	100	100
4125036	M8	300 x 260 x 300	2.00	200	100