

Contact us

ABB S.p.A.
Viale dell'Industria, 18
20009 Vittuone (MI) Italy
<https://new.abb.com/low-voltage>



Warning! Installation by person with electrotechnical expertise only.
Warnung! Installation nur durch elektrotechnische Fachkraft.
Avvertenza! Fare installare solo da un elettricista qualificato.



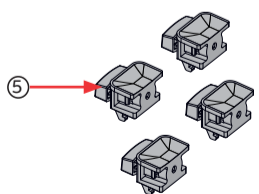
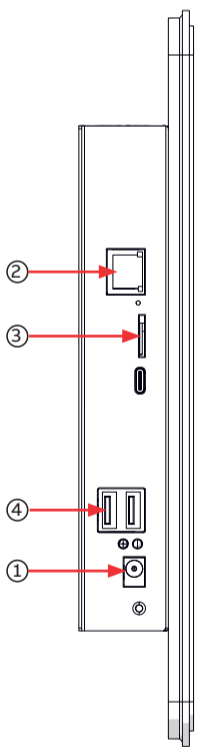
QR Code for online Installation Manual.

© Copyright 2025 ABB S.p.A. All rights reserved. Specification subject to change without notice.

1. Packaging Content

- INS-HMI
- 4 Fixing terminals
- Installation manual

2. Product overview



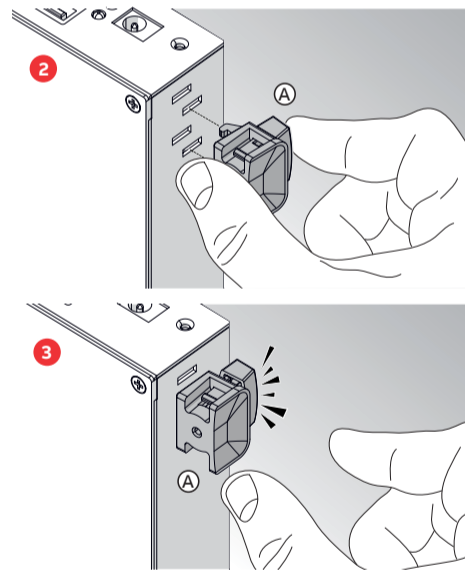
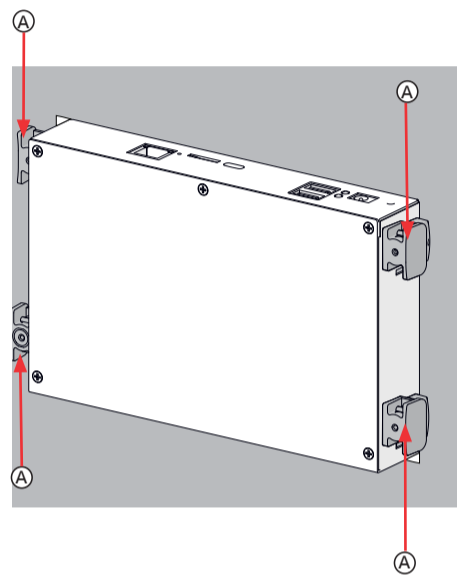
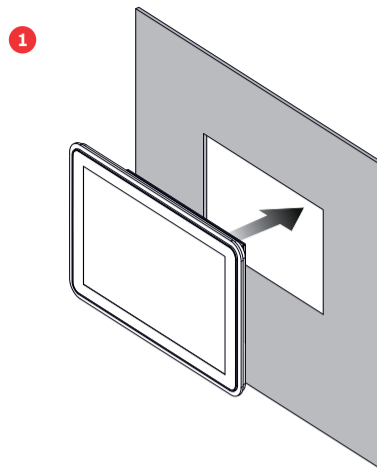
	Description
1	Connection port to 24 VDC
2	RJ45 LAN port
3	SD Card slot
4	2 USB ports
5	Fixing Terminals



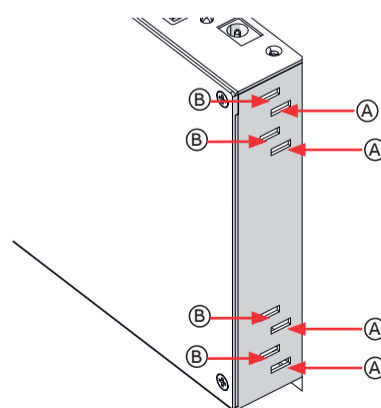
4. Assembly

4.1. Fixing Terminals

Finalize the installation through four fixing terminals.

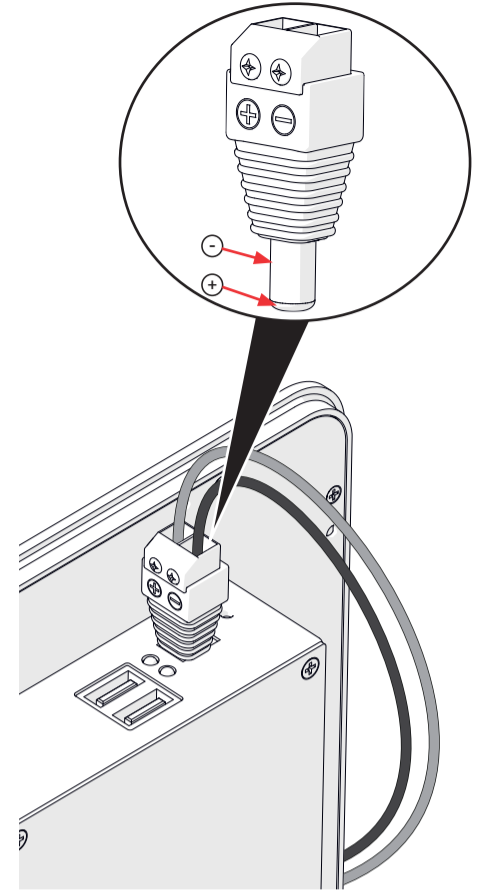


Use the slot A for panel < 4 mm.
Use the slot B for panel < 8 mm max.



Attention: The installation of the HMI requires some space inside the door. In some cabinets, it is not allowed to have additional DIN rail devices behind the HMI panel.

4.2. Power plug wiring



Attention: The device must be connected to a power supply (AC/DC converter) separately approved according to IEC 62368-1 standard, and that is suitable according to the technical specifications of the INS-HMI (e.g. voltage output of 24 VDC, compatible operating temperature, ...).

5. First Commissioning

To start to use the INS-HMI it is mandatory to configure the basic setting: a wizard will guide the user for the configurations (password, date&time, ...). Please follow the commissioning steps.

Attention: The connection of INS-HMI to other devices of the system does not compromise the electrical safety of the device itself.

Attention: Always use a dry cloth for cleaning, disconnect power to the system before connecting any module, no hot plug is allowed.

Attention: Disconnect power to the system before connecting any plug (e.g. SD card, USB, Ethernet cable).

Attention: It is the responsibility of the installer to ensure that the installation maintains IP64 protection (see chapter 7. Technical data), making sure that all components are correctly assembled and sealed according to the technical specifications provided by the manufacturer. The installer must carefully verify that there are no dust or water infiltrations that could compromise the device's functionality.

6. Setting and configuration

Detailed explanation to access web User Interface is reported in section "5. Access to control unit and configuration wizard" of the user manual. How to configure the system is detailed in section "6. WebUI" of the user manual.



Download User Manual.

9AKK108470A0914-A April 2025



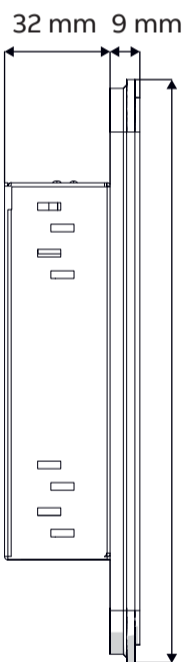
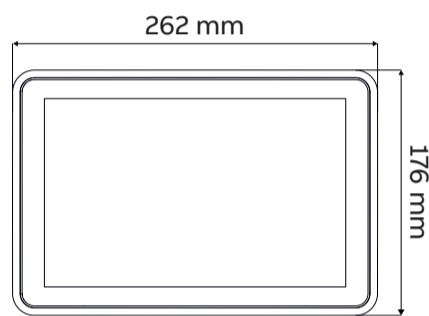
InSite energy management system

INSTALLATION MANUAL

InSite Touch Panel INS-HMI

3. INS-HMI Dimensions and cut out

3.1. INS-HMI dimensions



3.2. Cut Out

Attention: The installation of the HMI must be below 2 meters from the floor.

