

— SCU200, SCU200-W

End of Life Instruction

Decommissioning instructions available to enable responsible recycling or disposal



PREPARED 2024-10-29 Giuseppe A. Bianchi	DOCUMENT KIND EoL Instructions	SECURITY LEVEL Public		
OWNING ORGANIZATION ABB - ELSB	DOCUMENT ID. 9AKK108470A1390	REV. A	LANG. en	PAGE 1/5

Contents

- 1. Purpose and Basic Description3**
- 2. Dismantling instructions3**
 - 2.1. PCBAs4
 - 2.1.1. PCBA for CU residential4
 - 2.1.2. PCBA PSU-WiFi.....5
- 3. Constituent materials5**
- 4. Additional Information.....5**

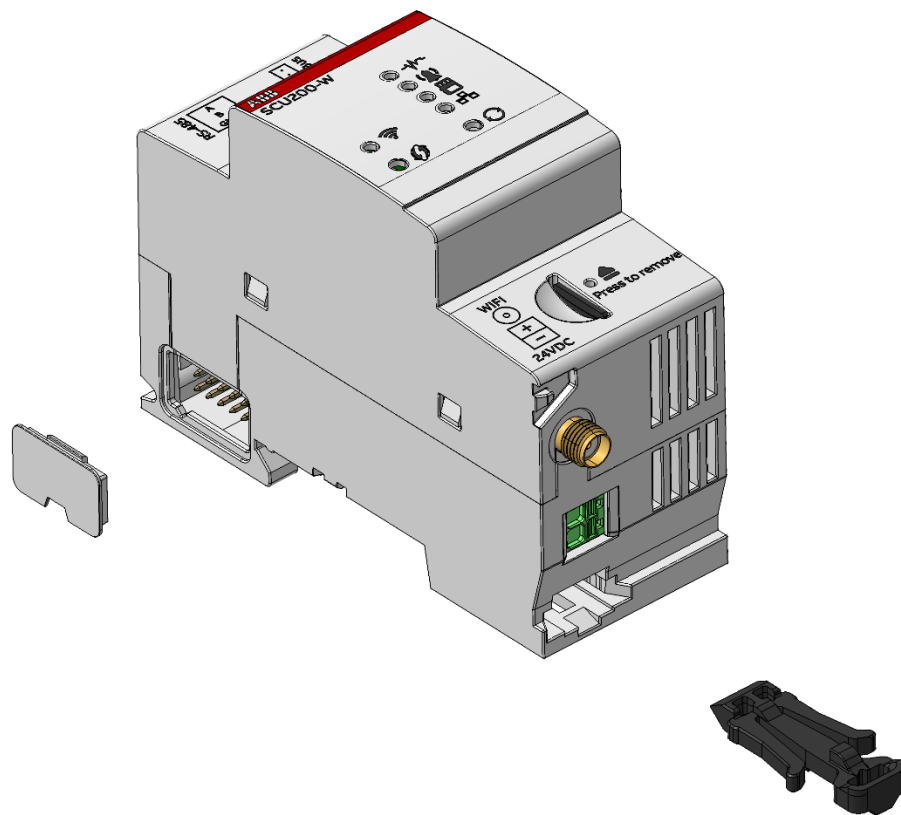
1. Purpose and Basic Description

This product family is in the scope of European Union directive 2012/19/EU on Waste Electrical and Electronic Equipment (WEEE). The product family must be disposed according to the legislation of the country. This end-of-life instructions is intended for use by customers and recycling companies which outline the responsible recycling or disposal method of the ABB product.

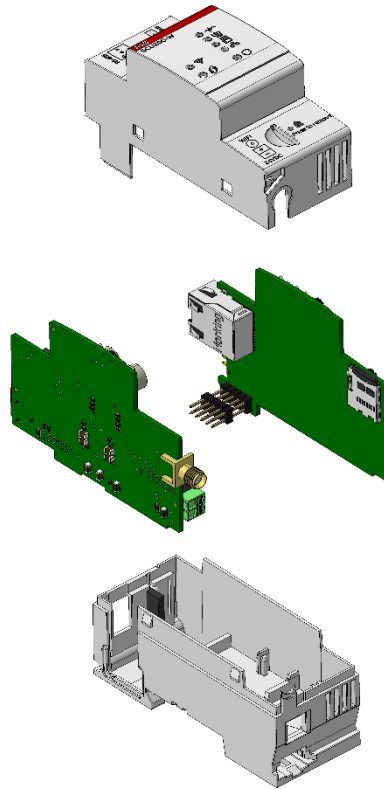
The SCU200 & SCU200-W control units are part of the InSite pro M compact - a monitoring system which brings complete overview of the system performances and enables energy and asset management. The system consists of field devices connected to the SCU200 control unit: energy and power meters, current sensors, digital input and output modules. These products are designed to be used in residential, commercial and industrial applications.

2. Dismantling instructions

First, remove the small cover and the rail clip, these parts should be removed to split the cover from the housing.



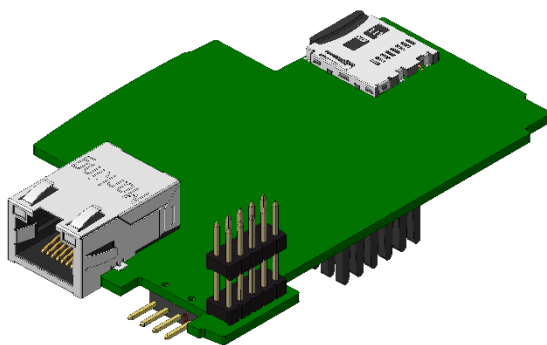
The different parts will be extracted until reaching the configuration of the figure below.



2.1. PCBAs

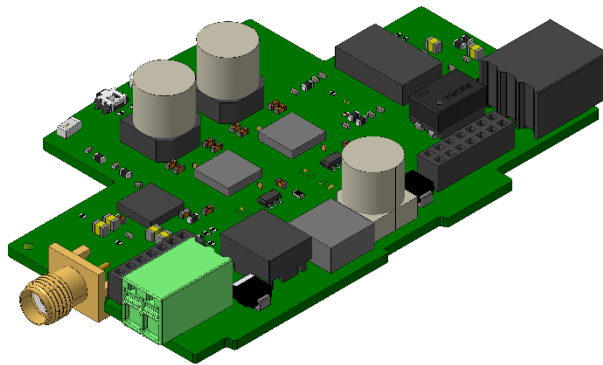
At the end, the Electronic Boards must be depolluted to assure an appropriate end of life treatment.

2.1.1. PCBA for CU residential



Weight of the Electronic Board 29.1g

2.1.2. PCBA PSU-WiFi



Weight of the Electronic Board 29.8g

3. Additional Information

Constituent materials

Plastics		Metals		Others	
PC + GF	28.6%	Aluminium	2.5%	Printed Circuit Cardboard	36.2%
POM	0.8%			Cardboard	26.6%
PC	0.3%			Paper	4%
PET	<0.1%			Degson Plug	0.8%
				Adhesive Paper	0.2%

*% of total weight for SCU200-W.

4. Additional Information

Weight	104.2 g
Overall dimensions (H x D x W)	87 ⁽¹⁾ x 64.9 x 35.8 mm

⁽¹⁾ Without considering rail clip