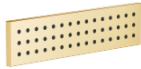


36 517 979 Product version up to 5/15/2020



- HORIZONTAL RAIN, max. flow rate 6 l/min (at 3 bar)
- Function from: 4.5 l/min
- with anti-scale system

Technical data:

- cover plate 240 x 60 mm
- 1/2" connection

Notes:

- This product can help a building meet the requirements of Green Building Rating Systems, e.g. LEED®, BREEAM®, DGNB

	Brushed Durabronz (23kt Gold)	36 517 979-28
	Chrome	36 517 979-00
	Brushed Platinum	36 517 979-06
	Platinum	36 517 979-08
	Dark Chrome	36 517 979-19
	Light Gold (PVD)	36 517 979-26
	Brushed Light Gold (PVD)	36 517 979-27
	Matte Black	36 517 979-33
	Brushed Gold (PVD)	36 517 979-37
	Brushed Dark Brass (PVD)	36 517 979-39
	Brushed Bronze (PVD)	36 517 979-42
	Brushed Dark Bronze (PVD)	36 517 979-43
	Brushed Champagne (22kt Gold)	36 517 979-46
	Champagne (22kt Gold)	36 517 979-47
	Brushed Chrome	36 517 979-93
	Brushed Dark Platinum	36 517 979-99

Required miscellaneous

- Concealed wall installation box -** 35 206 970 90
 - min. recess depth 100 mm
 - max. recess depth 173 mm

Recommended miscellaneous

- xGRID Attachment set for integrating in the dry wall construction -** 12 340 970 90

Required miscellaneous

- xGRID Installation track 555 mm -** 12 360 970 90

Required miscellaneous

- Concealed wall installation box -** 35 206 970 90
 - min. recess depth 100 mm
 - max. recess depth 173 mm

Recommended miscellaneous

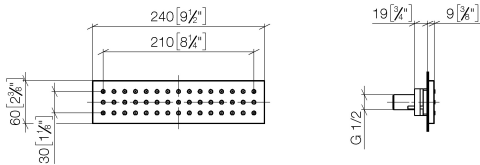
- xGRID Attachment set for integrating in the dry wall construction -** 12 340 970 90

Required miscellaneous

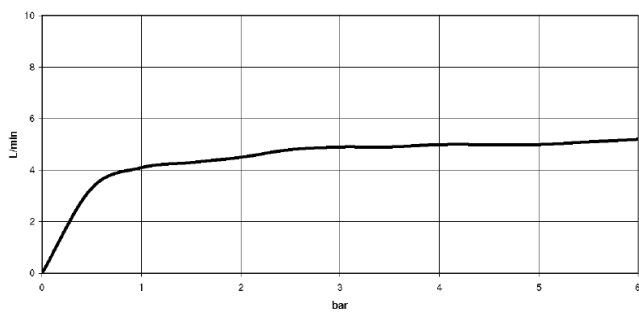
- xGRID Installation track 555 mm -** 12 360 970 90

36 517 979 Product version up to 5/15/2020

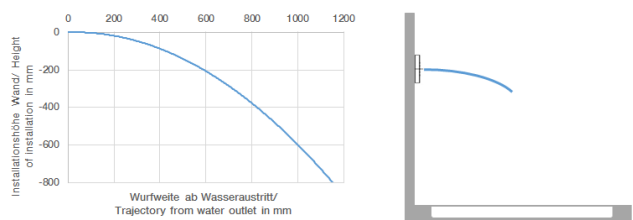
mm [inches]



Flow rate chart



Trajectory diagram



Codes & Standards

DIN 4109

ISO 3822

Scottish Water
Byelaws

UK Water Supply
Regulations

Ü-Zeichen



WATER BAR Concealed body spray - Brushed Durabross (23kt Gold)

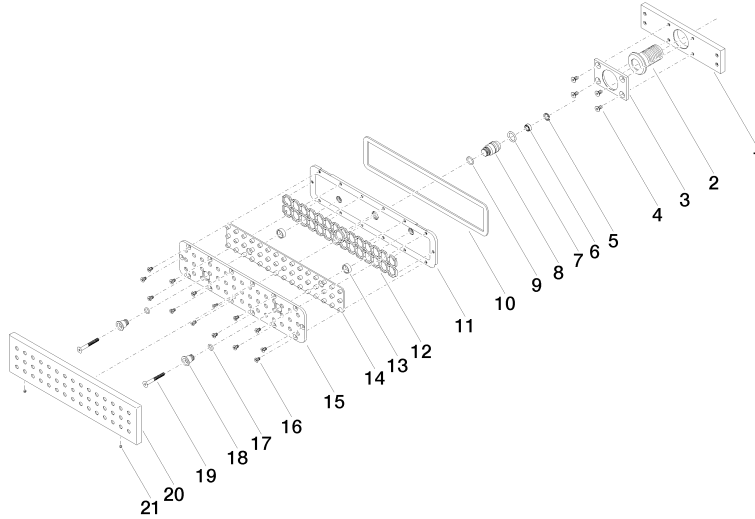
SERIES-VARIOUS

36 517 979 Product version up to 5/15/2020

Certificates and sustainability

WRAS_1304

LGA_19



Spare parts list

No.	Item Number	Name	Quantity used	Delivery time
	9 09 14 10 042 90	O-Ring EPDM 70 9,0 x 1,5 mm -	1.00	14
	5 09 16 01 016 90	Ring Retaining ring Ø 10 x 1 mm -	1.00	14
	13 09 28 10 142 20 90	Ring Ø 12,5 x 4,7 mm -	2.00	14
	14 09 12 01 076 90	Insert Spray pad 219 x 39 x 6 mm -	1.00	82
	17 09 14 10 132 90	O-Ring EPDM 70 6,0 x 1,5 mm -	2.00	14
	15 09 11 02 136-00	Rosette 240 x 60 x 9 mm - Chrome	1.00	-
Spare part can no longer be ordered, please order the replacement item				
	90110233200-00	Insert 280 x 67 x 175 mm - Chrome		
	20 09 27 99 001-28	Rosette 240 x 60 x 9 mm - Brushed Durabron (23kt Gold)	1.00	40
	1 09 11 02 137 90	Retaining plate 150 x 37 x 8 mm -	1.00	14
	10 09 14 03 133 90	Washer for Water Bar 231,5 x 51,5 x 2 mm -	1.00	14
	18 09 24 04 249-28	Nipple Ø 13 x 14 mm - Brushed Durabron (23kt Gold)	2.00	-
Spare part can no longer be ordered, please order the replacement item				
	7 09 14 10 003 90	O-Ring EPDM 70 11,0 x 2,0 mm -	1.00	14
	8 09 24 04 248 90	Nipple Ø 15 x 25 mm -	1.00	14
	4 09 30 30 116 90	Mounting Countersunk screw with hexagon socket M4 x 8 mm -	4.00	14
	11 09 11 02 135-28	Connection - Brushed Durabron (23kt Gold)	1.00	-
Spare part can no longer be ordered, please order the replacement item				
	90110233200-00	Insert 280 x 67 x 175 mm - Chrome		
	6 90 23 01 032 00 90	Flow limiter Set Ø 95 x 35 mm, 6 l/min. -	1.00	14
	16 09 30 30 163 90	Mounting Countersunk screw with cross-recess M3,5 x 6 mm -	14.00	14
	3 09 11 02 138 90	Holder 60 x 37 x 4 mm -	1.00	14
	2 09 24 04 247 20 90	Connection Ø 31,5 x 42 mm -	1.00	14
	21 09 31 11 006 90	Mounting Threaded pin with hexagon socket M3 x 3 mm -	2.00	14
	19 09 30 30 164 90	Mounting Countersunk screw with hexagon socket M4 x 35 mm -	2.00	14
	12 09 17 97 058 90	Holder 213 x 33 x 4,5 mm -	1.00	14