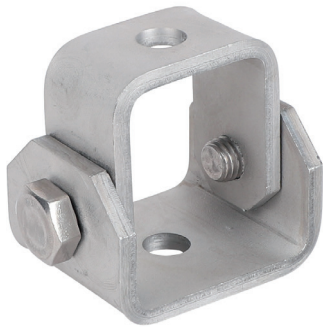


Walraven RapidStrut® Stainless Steel Adjustable Support

(M5320)

for suspensions and bracing



Features & benefits

- especially for angled installations with bracings
- suitable for fixing to wall, ceiling, floor or directly on rails
- adjustable angle up to 90°
- with two holes Ø13 mm
- material: stainless steel 1.4401 (A4) - EN 10088, AISI 316
- Max. allowed load: when used at an angle of 45° on wall/ceiling.

Product Number	NRF Number	For Rail Type	Total Height	Total Width	Total Length	Material Thickness	Width	Fixing Hole	Maximum Allowed Load Faz
<i>Reference Letter</i>			<i>H</i>	<i>W</i>	<i>L</i>	<i>MT</i>	<i>w</i>	<i>FH</i>	<i>Fa,z</i>
<i>Unit description</i>			<i>mm</i>	<i>mm</i>	<i>mm</i>	<i>mm</i>	<i>mm</i>	<i>mm</i>	<i>N</i>
66587718	1389695	41x21, 41x41	63	50	77.5	5.00	50	13	5,000