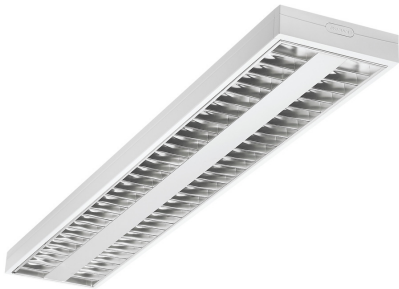


RANA NEO 7500LM S 1200 840 SSC 2L WHITE  
0054239



Features

- Surface or Suspended LED luminaire with Micro Prismatic Optic, Direct Light Distribution, Luminaire Dimensions: 1160x187x56mm, White body colour, IP20, IK07, SylSmart Standalone capable, Low LED flicker (+/-5%), Neutral White (4000K) LED Colour Temperature, 7500lm, 58W, 129lm/W efficacy, CRI>80, 3 SDCM (3-step MacAdam ellipse) LED Colour Consistency, UGR<18, Luminance at 65° < 3000 cd/ m2, Lifespan: 96,000 hours L80B20, Quick electrical connection with push-connectors in the luminaire, Glow Wire Test 850°C.

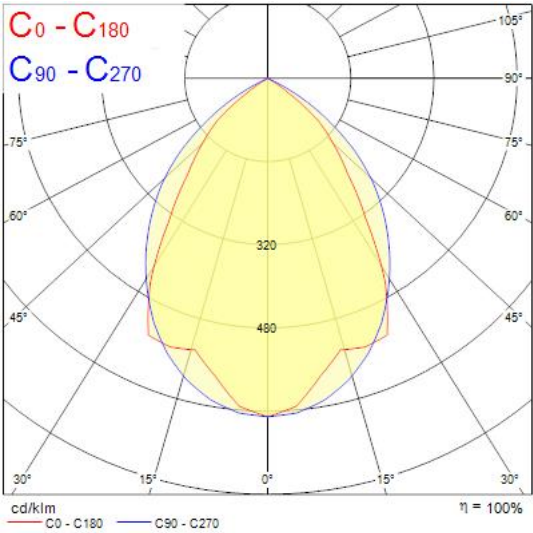
Product Overview

Product name	RANA NEO 7500LM S 1200 840 SSC 2L WHITE
Technology	LED (3 SDCM)
Cap/Base	N/A
Housing	Steel
Mount	Ceiling surface mounting, Suspended
Fixture luminous flux (lm)	7500
Luminaire efficacy (lm/W)	129
Colour temperature (K)	4000
Light colour	Neutral White
CRI (Ra)	80
Colour Variation Initial (SDCM)	3
Glare control	< 18
Photobiological Risk Group	RG0
Total power consumption (W)	58
Electrical protection	Class I
Control gear type	LED driver constant current
LED Flickering Rate	Ultra low (5% or less)
Housing colour	RAL 9016 - Traffic white / Bezel
IP rating	IP20
IK rating	IK07

RANA NEO 7500LM S 1200 840 SSC 2L WHITE  
0054239

Product EAN number	5410288542393
Warranty	5 years

Photometry



Technical drawings

