

— INS-E3, INS-WM, INS-SH, INS-USB

End of Life Instruction

Decommissioning instructions available to enable responsible recycling or disposal



PREPARED	DOCUMENT KIND	SECURITY LEVEL		
2024-10-29 Giuseppe A. Bianchi	EoL Instructions	Public		
OWNING ORGANIZATION	DOCUMENT ID.	REV.	LANG.	PAGE
ABB - ELSB	9AKK108470A1391	A	en	1/5

Contents

- 1. Purpose and Basic Description3**
- 2. Dismantling instructions3**
 - 2.1. Electonic Board 4
- 3. Constituent materials5**
- 4. Additional Information.....5**

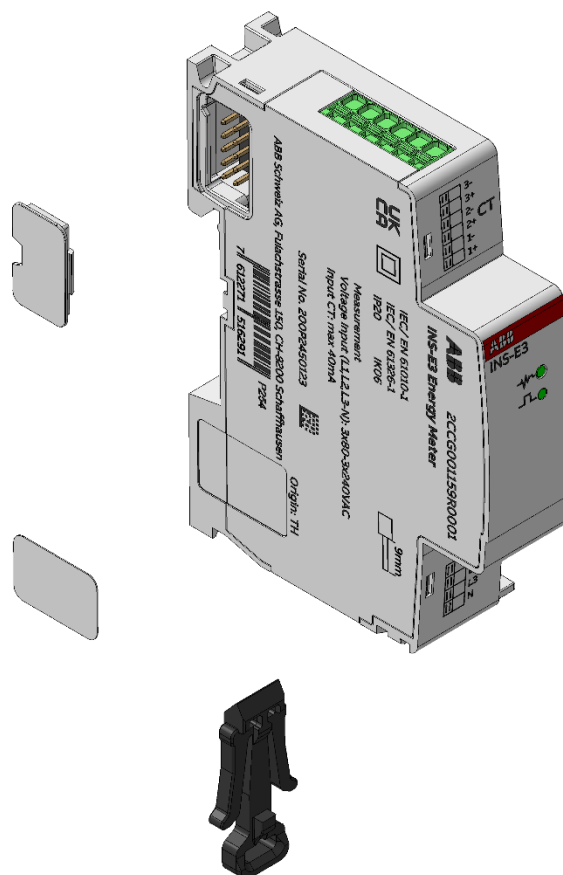
1. Purpose and Basic Description

This product family is in the scope of European Union directive 2012/19/EU on Waste Electrical and Electronic Equipment (WEEE). The product family must be disposed according to the legislation of the country. This end-of-life instructions is intended for use by customers and recycling companies which outline the responsible recycling or disposal method of the ABB product.

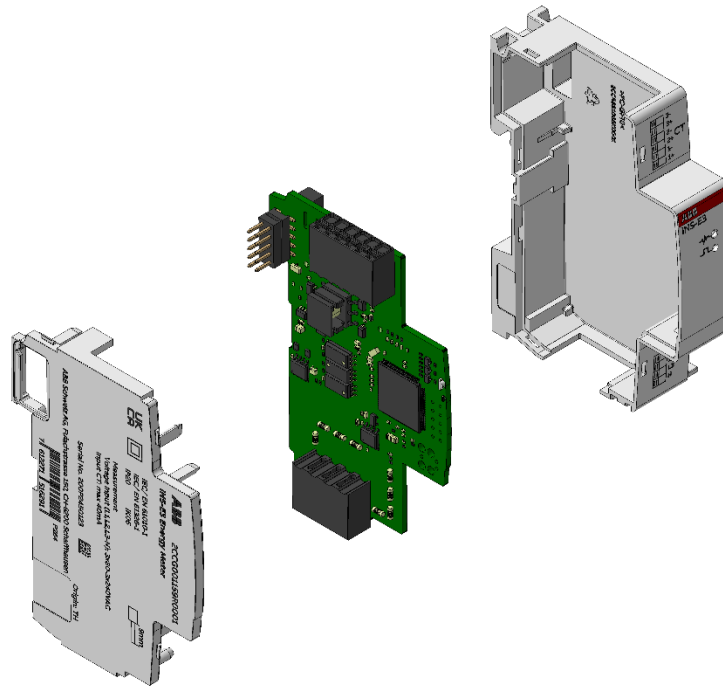
The INS-E3, INS-WM, INS-SH & INS-USB are part of the InSite pro M compact - a monitoring system which brings complete overview of the system performances and enables energy and asset management. The INS-E3, INS-WM, INS-SH & INS-USB expansion modules serve as current and voltage measurement, and it sends this information to the Control Unit SCU200 connected to it. These products are designed to be used in residential, commercial and industrial applications.

2. Dismantling instructions

First, remove the label, the small cover and the rail clip, these parts should be removed to split the various covers of product.

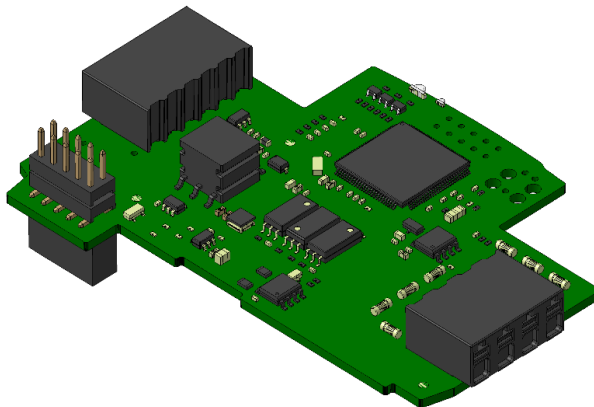


The different parts will be extracted until reaching the configuration of the figure below.



2.1. Electronic Board

At the end, the Electronic Board must be depolluted to assure an appropriate end of life treatment.



Weight of the Electronic Board 23.3g

SECURITY LEVEL	DOCUMENT ID.	REV.	LANG.	PAGE
Public	9AKK108470A1391	A	en	4/5

3. Constituent materials

Plastics		Packaging	
PC + GF	28.9%	Cardboard	40%
POM	1.3%	Printed Circuit Cardboard	23.3%
PC	0.2%	Paper	6%
		Adhesive Paper	0.3%

*% of total weight INS-E3.

4. Additional Information

Weight	53.7 g
Overall dimensions (H x D x W)	87 ⁽¹⁾ x 64.9 x 17.5 mm

⁽¹⁾ Without considering rail clip