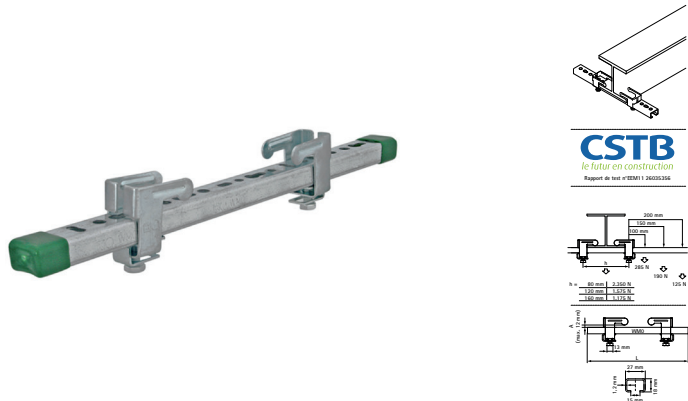


Walraven Rail 27x18 'Light Duty' Set

(G4030)

fixing to steel beam



Features & benefits

- for suspension of light components like cable trays, duct work, etc. onto beams without welding or drilling
- up to flange thickness 12 mm
- material: beam clamp made of steel; rail made of steel 1.0242
- beam clamp: zinc plated; rail: pre-galvanized
- consists of: 1 length of rail 27x18 mm, 2 Beam clamps (Part No. 607 0 000), 2 Rail End Caps
- beam clamp also available loose

Product Number	For Rail Type	Clamping Range	Thread Size	Thread Length	Total Width x Total Height x Total Length	Width	Material Thickness	Torque Moment For Installation	Maximum Allowed Load Faz
Reference letter		CR	TS	TL	W x H x L	w	MT	T inst.	F _{0,z}
Unit description		mm		mm	mm x mm x mm	mm	mm	Nm	N
6070400	27x18	1 - 12	M8	16	32 x 60 x 400	28	2.00	15	2,350