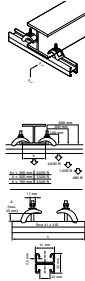
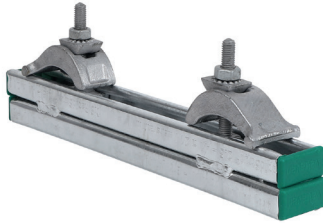


Walraven RapidStrut® 41x21D 'Heavy Duty' Set

(H3625)

complete set for steel beam fixing



Features & benefits

- solid cast iron beam clamp for suspension of heavy loads onto beams without welding or drilling
- up to flange thickness 35 mm
- material: beam clamp made of steel; rail made of steel 1.0332
- hot dip galvanized
- consists of: 1 length of Walraven RapidStrut® Rail 41x21D, 2 Beam clamps (Part No. 607 2 002), 4 Rail End Caps
- beam clamp also available loose

Product Number	For Rail Type	Clamping Range	Thread Size	Thread Length	Total Width x Total Height x Total Length	Width	Material Thickness	Torque Moment For Installation	Maximum Allowed Load Faz
<i>Reference letter</i>		<i>CR</i>	<i>TS</i>	<i>TL</i>	<i>W x H x L</i>	<i>w</i>	<i>MT</i>	<i>T inst.</i>	<i>F_{0,z}</i>
<i>Unit description</i>		<i>mm</i>		<i>mm</i>	<i>mm x mm x mm</i>	<i>mm</i>	<i>mm</i>	<i>Nm</i>	<i>N</i>
6073400	41x21	1 - 35	M10	63	52 x 110 x 400	35	9.00	30	5,000
6073600	41x21	1 - 35	M10	63	52 x 110 x 600	35	9.00	30	5,000