

Data Sheet | Item Number: 2092-1104

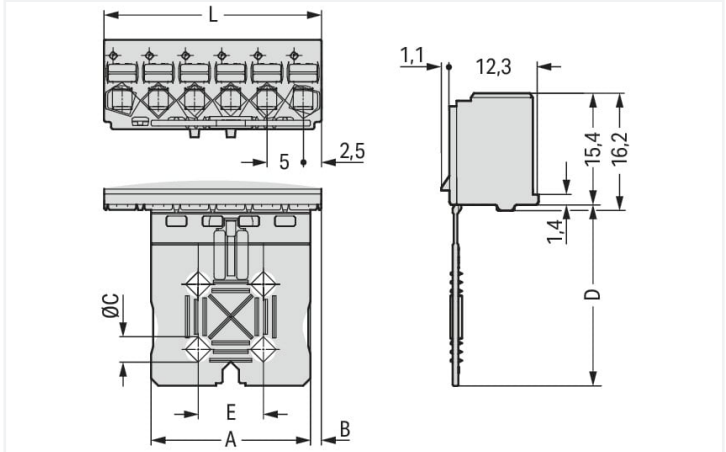
1-conductor female connector; push-button; Push-in CAGE CLAMP®; 2.5 mm²; Pin spacing 5 mm; 4-pole; Gripping plate; 2,50 mm²; light gray

<https://www.wago.com/2092-1104>



Color: ■ light gray

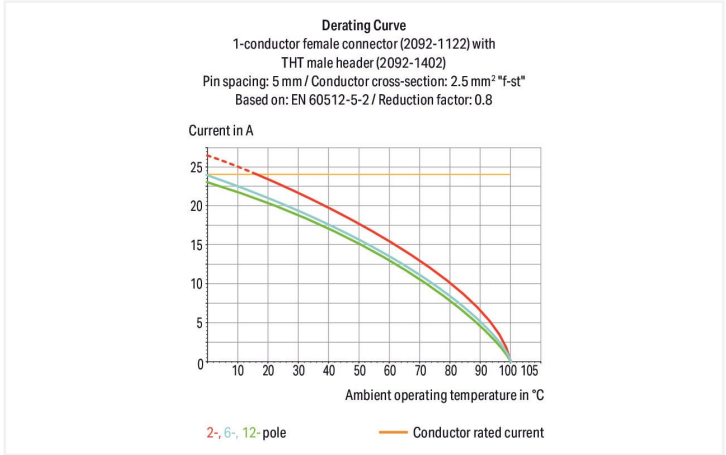
Similar to illustration



Dimensions in mm

L = pole no. x pin spacing

| Gripping plate Dimensions (in mm): | | | | | |
|------------------------------------|----|-----|-----|----|----|
| Pole No. | A | B | C | D | E |
| 2 | 7 | 1.5 | – | 20 | – |
| 3 | 12 | 1.5 | – | 20 | – |
| 4 | 12 | 1.5 | – | 20 | – |
| 5 | 22 | 1.5 | 3.5 | 25 | 9 |
| 6 | 22 | 1.5 | 3.5 | 25 | 9 |
| 7 | 22 | 6.5 | 3.5 | 25 | 9 |
| 8 | 22 | 6.5 | 3.5 | 25 | 9 |
| 9 | 42 | 1.5 | 5.0 | 35 | 19 |
| 10 | 42 | 1.5 | 5.0 | 35 | 19 |
| 12 | 42 | 6.5 | 5.0 | 35 | 19 |



- Universal connection for all conductor types
- Simple, push-in termination of solid and ferruled conductors
- Easy-to-use design does not require specialty tools
- Ability to wire while mated or unmated
- Test port parallel to conductor entry – touch contact
- Integrated locking latches prevent accidental disconnection

Notes

Safety information

Variants:

The **picoMAX® Pluggable Connection System** includes connectors without breaking capacity in accordance with DIN EN 61984. When used as intended, these connectors must not be connected/disconnected when live or under load. The circuit design should ensure header pins, which can be touched, are not live when unmated.

Direct marking

Other versions (or variants) can be requested from WAGO Sales or configured at <https://configurator.wago.com/>.



| Electrical data | | | | | | |
|----------------------|-------|----------------|-------|---------------|---------------|------|
| Ratings per | | IEC/EN 60664-1 | | | Approvals per | |
| | | UL 1059 | | | | |
| Overvoltage category | III | III | II | Use group | B | C |
| Pollution degree | 3 | 2 | 2 | Rated voltage | 300 V | - |
| Nominal voltage | 250 V | 320 V | 630 V | Rated current | 15 A | - |
| Rated surge voltage | 4 kV | 4 kV | 4 kV | | | 10 A |
| Rated current | 16 A | 16 A | 16 A | | | |

| Connection data | | | |
|----------------------------|---|---|---------------------------------------|
| Connection points | 4 | Connection 1 | |
| Total number of potentials | 4 | Connection technology | Push-in CAGE CLAMP® |
| Number of connection types | 1 | Actuation type | Push-button |
| Number of levels | 1 | Actuation direction 1 | Operation parallel to conductor entry |
| | | Solid conductor | 0.2 ... 2.5 mm² / 24 ... 12 AWG |
| | | Fine-stranded conductor | 0.2 ... 2.5 mm² / 24 ... 12 AWG |
| | | Fine-stranded conductor; with insulated ferrule | 0.25 ... 1.5 mm² |
| | | Fine-stranded conductor; with uninsulated ferrule | 0.25 ... 2.5 mm² |
| | | Strip length | 9 ... 10 mm / 0.35 ... 0.39 inches |
| | | Pole number | 4 |

| Physical data | |
|---------------|------------------------|
| Pin spacing | 5 mm / 0.197 inches |
| Width | 20 mm / 0.787 inches |
| Height | 35.4 mm / 1.394 inches |
| Depth | 13.4 mm / 0.528 inches |

| Mechanical data | |
|--------------------------|---------------------|
| Variable coding | Yes |
| Design | with gripping plate |
| Anti-rotation protection | Yes |

| Plug-in connection | |
|--------------------------------------|-------------------------|
| Contact type (pluggable connector) | Female connector/socket |
| Connector (connection type) | for conductor |
| Mismating protection | No |
| Plugging without loss of pin spacing | Yes |

| Material data | |
|-----------------------------|--|
| Note (material data) | Information on material specifications can be found here |
| Color | light gray |
| Material group | I |
| Insulation material | Polyphthalamide (PPA GF) |
| Flammability class per UL94 | V0 |
| Clamping spring material | Chrome-nickel spring steel (CrNi) |
| Contact material | Electrolytic copper (E _{Cu}) |
| Contact plating | Tin |
| Fire load | 0.092 MJ |
| Weight | 4 g |



| Environmental requirements | |
|----------------------------|-----------------|
| Limit temperature range | -60 ... +100 °C |
| Processing temperature | -35 ... +60 °C |

| Commercial data | |
|-----------------------|-------------------------|
| Product Group | 26 (picoMAX Connectors) |
| eCl@ss 10.0 | 27-14-11-06 |
| eCl@ss 9.0 | 27-14-11-06 |
| ETIM 8.0 | EC001284 |
| ETIM 7.0 | EC001284 |
| PU (SPU) | 100 pcs |
| Packaging type | Box |
| Country of origin | DE |
| GTIN | 4050821163411 |
| Customs tariff number | 85366990990 |

| Environmental Product Compliance | |
|----------------------------------|-------------------------|
| RoHS Compliance Status | Compliant, No Exemption |

Approvals / Certificates

General approvals



| Approval | Standard | Certificate Name |
|---|---------------|------------------|
| CB DEKRA Certification B.V. | IEC 61984 | NL-49737/A1 |
| CSA DEKRA Certification B.V. | C22.2 | 2362521 |
| CSA DEKRA Certification B.V. | C22.2 No. 158 | 2362521 |
| cURus Underwriters Laboratories Inc. | UL 1059 | E45172 |
| KEMA/KEUR DEKRA Certification B.V. | EN 61984 | 71-102261 REV.2 |
| UL Underwriters Laboratories Inc. | UL 1977 | E45171 |

Downloads

Environmental Product Compliance

| Compliance Search | |
|--|-------------------|
| Environmental Product Compliance 2092-1104 | ↓ |



Documentation

| Additional Information | | | |
|------------------------|------------|-------------------|--|
| Technical Section | 03.04.2019 | pdf 2010.85 KB | |

CAD/CAE-Data

| CAD data | CAE data |
|---------------------------|---------------------------|
| 2D/3D Models 2092-1104 | ZUKEN Portal 2092-1104 |

1 Compatible Products

1.1 System counterpart

1.1.1 Male connector/plug



[Item No.: 2092-1524/002-000](#)
1-conductor male connector; Push-in CA-GE CLAMP®; 2.5 mm²; Pin spacing 5 mm; 4-pole; Integrated release lever; 2,50 mm²; light gray



[Item No.: 2092-1424](#)
THT male header; 1.4 mm Ø solder pin; angled; Pin spacing 5 mm; 4-pole; light gray



[Item No.: 2092-1404](#)
THT male header; 1.4 mm Ø solder pin; straight; Pin spacing 5 mm; 4-pole; light gray

1.2 Optional Accessories

1.2.1 Test and measurement

1.2.1.1 Testing accessories



[Item No.: 735-500](#)
WAGO Test pin; 1 mm Ø; 30 V AC / 60 V DC; CAT0; 1 A; 6 mm uninsulated; Test lead for soldering up to 0,5mm²

1.2.2 Tool

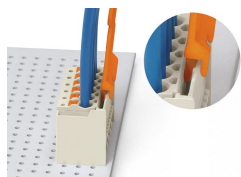
1.2.2.1 Operating tool



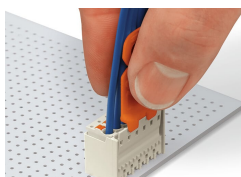
[Item No.: 210-719](#)
Operating tool; Blade: 2.5 x 0.4 mm; with a partially insulated shaft

Installation Notes

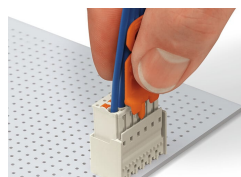
Locking system



Disconnecting a female connector via unlocking tool. Plug unlocking tool into the male header's locking latch.

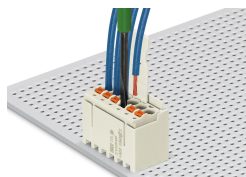


Insert unlocking tool until it hits the back-stop. Wedge opens locking latches.



Pull on both unlocking tool and conductors to remove female connector from male header.

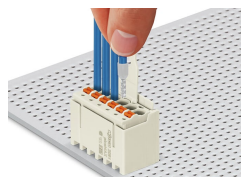
Conductor termination



Inserting fine-stranded conductor into mated female connector via push-button.



Inserting a fine-stranded conductor into an unmated female connector via push-button.



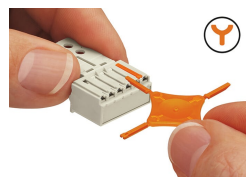
Inserting solid and ferruled conductors via push-in termination.

Marking



Pole marking via factory direct marking.

Coding



Coding a female connector (via coding key carrier and two keys for female connector, see symbol).

Testing



Testing via 1 mm Ø test pin – touch contact.