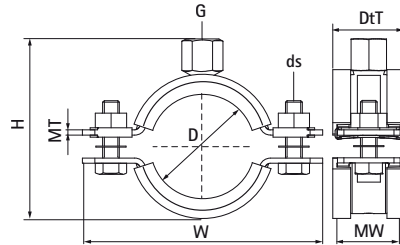


Walraven Heavy Duty Clamp HD1501 (M10/12) (BUP1000)

(A1005)

for metal pipes



Features & benefits

- two-part clamp with two locking bolts
- heavy design
- bolts secured with anti-loss washer
- with CO₂ welded connection nut
- material: steel
- surface protection:
- product is part of the Walraven BIS UltraProtect® 1000 system
- suitable for in- and outdoor applications
- stands min. 1,000 hours salt spray test (max. 5% red rust) according to ISO 9227
- sound insulating lining according DIN 4109
- noise reduction according to ISO 3822-1 up to 18 dB(A)
- tested for fire safety



EPD

Product Number	Outside Pipe Diameter	DN	Pipe Diameter Imperial	Connection Thread	Total Width x Total Height x Total Depth	Material Width x Material Thickness	Screw Size	Approvals	Maximum Allowed Load Faz
Reference letter	D	D	D	G	W x H x DtT	MW x MT	ds		F _{0,z}
Unit description	mm		"		mm x mm x mm	mm x mm			N
33148071	65 - 71	-	-	M10/M12	136 x 116 x 30	30 x 3.00	M8	RAL-GZ 656 ITB (KOT) CE ETA RAL-GZ 655/B EPD	2,300
33148078	72 - 78	DN 65	2½	M10/M12	144 x 123 x 30	30 x 3.00	M8	RAL-GZ 656 ITB (KOT) CE ETA RAL-GZ 655/B EPD	2,300
33148085	79 - 85	-	-	M10/M12	152 x 130 x 30	30 x 3.00	M8	RAL-GZ 656 ITB (KOT) CE ETA RAL-GZ 655/B EPD	2,300
33148092	86 - 92	DN 80	3	M10/M12	159 x 136 x 30	30 x 3.00	M8	RAL-GZ 656 ITB (KOT) CE ETA RAL-GZ 655/B EPD	2,300
33148109	101 - 109	-	-	M10/M12	175 x 154 x 30	30 x 3.00	M8	RAL-GZ 656 ITB (KOT) CE ETA RAL-GZ 655/B EPD	2,300
33148116	108 - 116	DN 100	4	M10/M12	182 x 160 x 30	30 x 3.00	M8	RAL-GZ 656 ITB (KOT) CE ETA RAL-GZ 655/B EPD	2,300
33148133	125 - 133	-	-	M10/M12	200 x 178 x 30	30 x 3.00	M8	RAL-GZ 656 ITB (KOT) CE ETA RAL-GZ 655/B EPD	2,300
33148140	132 - 140	DN 125	5	M10/M12	207 x 184 x 30	30 x 3.00	M8	RAL-GZ 656 ITB (KOT) CE ETA RAL-GZ 655/B EPD	2,300
33148169	159 - 169	DN 150	6	M10/M12	254 x 223 x 38	38 x 4.00	M10	ITB (KOT) CE ETA RAL-GZ 655/B EPD	3,800
33148188	178 - 188	-	-	M10/M12	274 x 242 x 38	38 x 4.00	M10	ITB (KOT) CE ETA RAL-GZ 655/B EPD	3,800
33148204	194 - 204	-	-	M10/M12	290 x 258 x 38	38 x 4.00	M10	ITB (KOT) CE ETA RAL-GZ 655/B EPD	3,800
33148213	203 - 213	-	-	M10/M12	299 x 267 x 38	38 x 4.00	M10	ITB (KOT) CE ETA RAL-GZ 655/B EPD	3,800
33148227	217 - 227	DN 200	8	M10/M12	322 x 282 x 38	38 x 4.00	M12	ITB (KOT) CE ETA RAL-GZ 655/B EPD	3,800