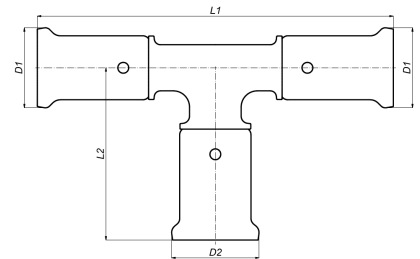


12PK-202620: T-enlarged centre 20x26x20



Commercial information

PVDF press fittings in combination with multilayer pipe, a completely corrosion-free system. The synthetic press fittings are made from injection moulded PVDF (Polyvinylidene fluoride)*. PVDF offers the user a unique combination of properties:

- Highly resistant to pressure and temperature
- Excellent mechanical strength
- Extreme flexibility: bending up to 10° is possible
- Perfectly suited for drinking water and food
- Highly resistant to chemicals and corrosion
- Embedding is possible without extra protection

Basic unit dimensions

Height	33 mm
Length	107 mm
Width	65 mm
Net weight	0.080 kg

Certificates

ATG, QB (CSTBat), DVGW Wasser, ETA, KIWA, ÖVGW Wasser, SINTEF, WRAS, KOMO, ÖN EN 21003-2/-3, GOST-R, ITC, TSU, AFNOR, PZH, STF, ACS, DNV-GL, Aenor, Sans 21003, Kontrol Biro, RISE, EMI

Applications

Potable water, Heating, Compressed air, Cooling, Demi Water, Sanitary

Solutions

Building installations, Industry, Utility, Shipbuilding

Technical characteristics

Material connection 1	Polyvinylidene fluoride (PVDF)	Angle	90 Degrees
Surface protection connection 1	Untreated	Outer pipe diameter connection 1	20 Millimetre
Surface treatment connection 1	Untreated	Wall thickness, connection 1	0.7 Millimetre
Material connection 2	Polyvinylidene fluoride (PVDF)	Outer pipe diameter connection 2	26 Millimetre
Surface protection connection 2	Untreated	Wall thickness, connection 2	0.95 Millimetre
Surface treatment connection 2	Untreated	Outer pipe diameter connection 3	20 Millimetre
Material connection 3	Polyvinylidene fluoride (PVDF)	Wall thickness, connection 3	0.7 Millimetre
Surface treatment connection 3	Untreated	Length of connection 1	53.5 Millimetre
Model	T-piece	Working length connection 1	26.5 Millimetre
Swept entry type (with inner radius)	✗	Length of connection 2	51.5 Millimetre
Reducing	✓	Working length connection 2	24.5 Millimetre
System specific	✓	Length of connection 3	53.5 Millimetre
Connection 1	Press sleeve	Working length connection 3	26.5 Millimetre
Contour code connection 1	TH	Wrench width	0 Millimetre
Connection 2	Press sleeve	Max. operating pressure at 20 °C	16 Bar
Contour code connection 2	TH	Wrench width union nut	0 Millimetre
Connection 3	Press sleeve	Medium temperature (continuous)	-10 70 Degrees celsius
Contour code connection 3	TH	Standard Dimension Ratio (SDR)	0
Flange standard	Other		
Material sealing	Ethylene-propylene diene monomer rubber (EPDM)		
Main colour fitting	Black		
High tensile strength	✗		
Ring stiffness class	Other		
With sealing rings/gaskets	✓		
With drain valve	✗		
With de-aerator	✗		
With thermal insulation	✗		
With buffer stud	✓		
Capped	✗		
FM quality mark	✗		
LPCB quality mark	✗		
ULC quality mark	✗		
UL quality mark	✗		
DIN-CERTCO certificate	✗		
VdS quality mark	✗		
With approval for TÜV	✗		
DVGW quality mark for gas	✗		
DVGW quality mark for water	✓		
KIWA certified	✓		
Gastec QA mark	✗		
KOMO certified	✓		
Type approval according to BBR/EKS	✗		