

TRONIX



LED Vapor proof light bar 950-078



Introduction

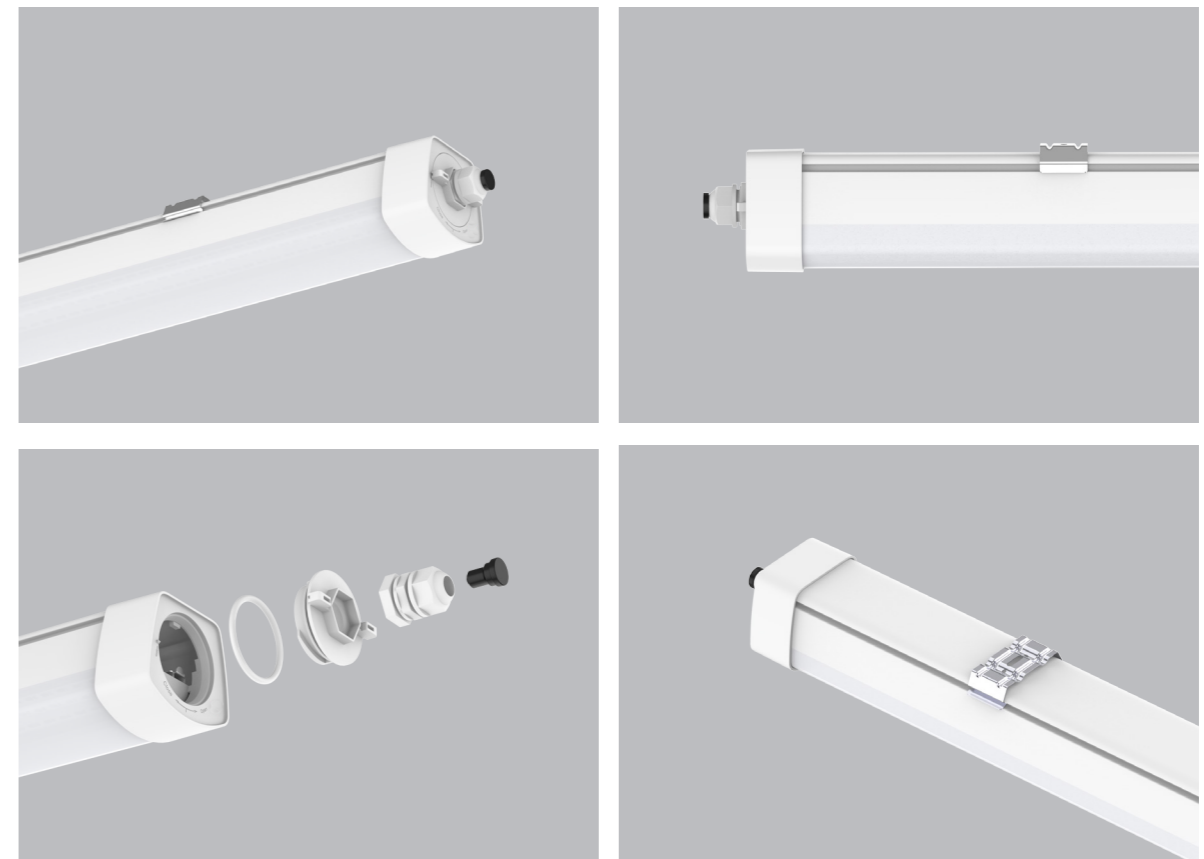
This is a high quality LED Vapor proof with high luminous efficacy 150lm/w. With a reliable and robust housing structure (IK08 & IP65), this maximizes the endurance and contributes to its long lifetime. With its flexible installation accessories, it can install as surface mounting, pendant and splicing, which can be used in a wider applications. The length is 1500mm, it's an ideal replacement for traditional fluorescent Vapor proof.

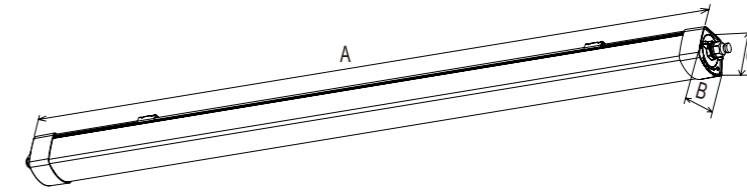
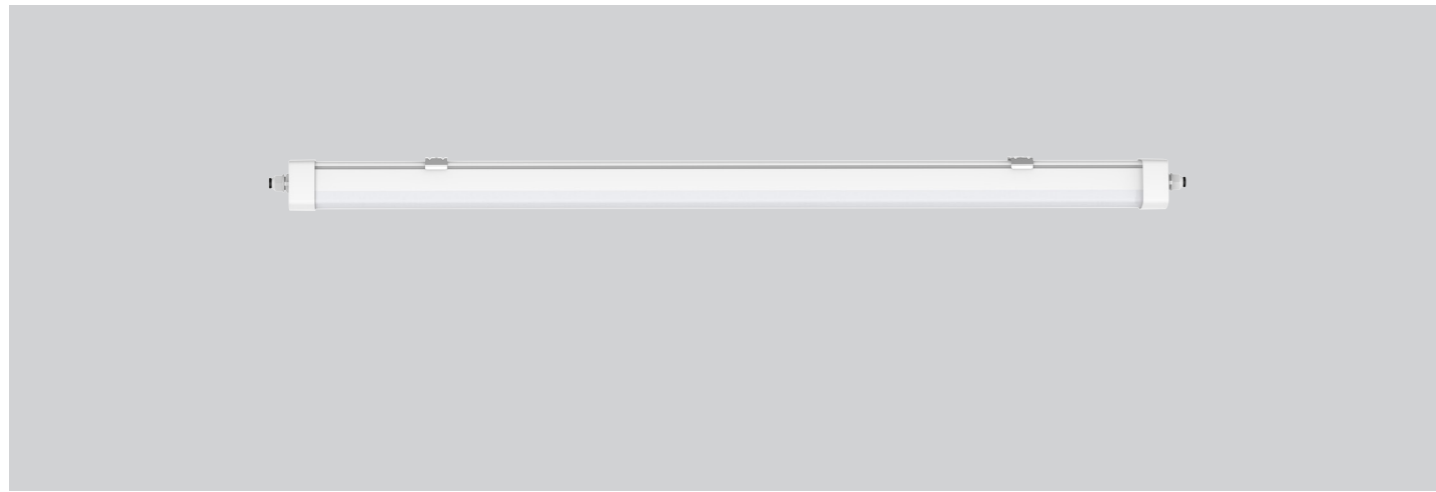
Features

- Compact design, suitable for both indoor and outdoor applications.
- IP65 waterproof, IK08 impact protection.
- Lifespan: approx. 50,000 hours.
- End caps: made of shockproof polycarbonate (PC).
- Flexible installation through sliding mounting bracket.
- Presetable CCT.
- Tool free mains cable installation on both sides through twist lock fastener cover at both sides.

Application Areas

This linear fixture is widely used in shopping mall, office, car park, station, home.





Technical Data Sheet

Code No.	950-078
Dimension(mm)	1500*77*69
Cutout (mm)	-
Watt(W)	52W
Rated Input Voltage(V)	AC230V
Input Voltage(V)	AC220-240V
LED Module Input	-
Light Source	SMD
SDCM	<6
CCT(K)	3-CCT:3000K+4000K+5700K
CCT Selection DIP Switch	Yes
Luminous Flux (lm) ±5%	7500-8000
CRI	80
Beam Angle (°)	120°
UGR	—
LED Driver	Built-in
Dimming Option	-
Sensor	-
Emergency Kits	-
Electrical Class	Class II
Ingress Protection (IP Rating)	IP65
Impact Resistance (IK Rating)	IK08
Product Finishing(Base)	White RAL9016
Materials of Optics	PC
Materials of Housing	PC
Lifetime (hr)	50,000h
Glow wire test ()	750
Operating Temp. ()	-20 ~40
Storage Temp. ()	-20 ~60
Installation	Surface mount/ Pendant

Measurement

Code	Dimension(mm)			Size(mm)	Product Weight (Kg)		Package weight (Kg)		Carton Size(cm)	Qty/CTN
	A	B	C		N.W/PC	G.W/PC	N.W/CTN	G.W/CTN		
950-078	1500	77	69	1500*77*69	2.1	2.3	12.6	16	163*25*18.5	6

Driver Datasheet (Non-Dimmable)

Total load wattage		52W
Output	Output Voltage range	DC28-42V
	Rated output current	1500mA
	Line Regulation	±5%
	Setup, Rise Time	<0.5s @230V
	Flickering Index	0.2% (NO RISK)
Input	Input Voltage	AC200-240V
	Rated Input Voltage(V)	AC220-240V
	Frequency	50/60Hz
	Input Current	≤0.36A
	Rated Input Current	≤0.3
	Power Factor	≥0.9
	THD	<20% @230V
	Efficiency	≥87%
No load wattage		-
Protection	Short circuit protection	Pass
	Over voltage protection	Pass
	Over temperature protection	Pass
Safety & EMC	Withstand voltage	I/P-FG:1.6kVac, <5mA 60SI
	Isolation Resistance	I/P-PG,O/P-PG: 500VDC, ≥100M Ω
	Surge	IEC/EN61000-4-5 (P≥25w L-N:1KV, L/N-PE:2KV)
	EMC Emission	EN55015, EN61000-3-2
EMC Immunity		EN61000-4-2,3,4,5,6,8,11; EN61547

Installation Procedure

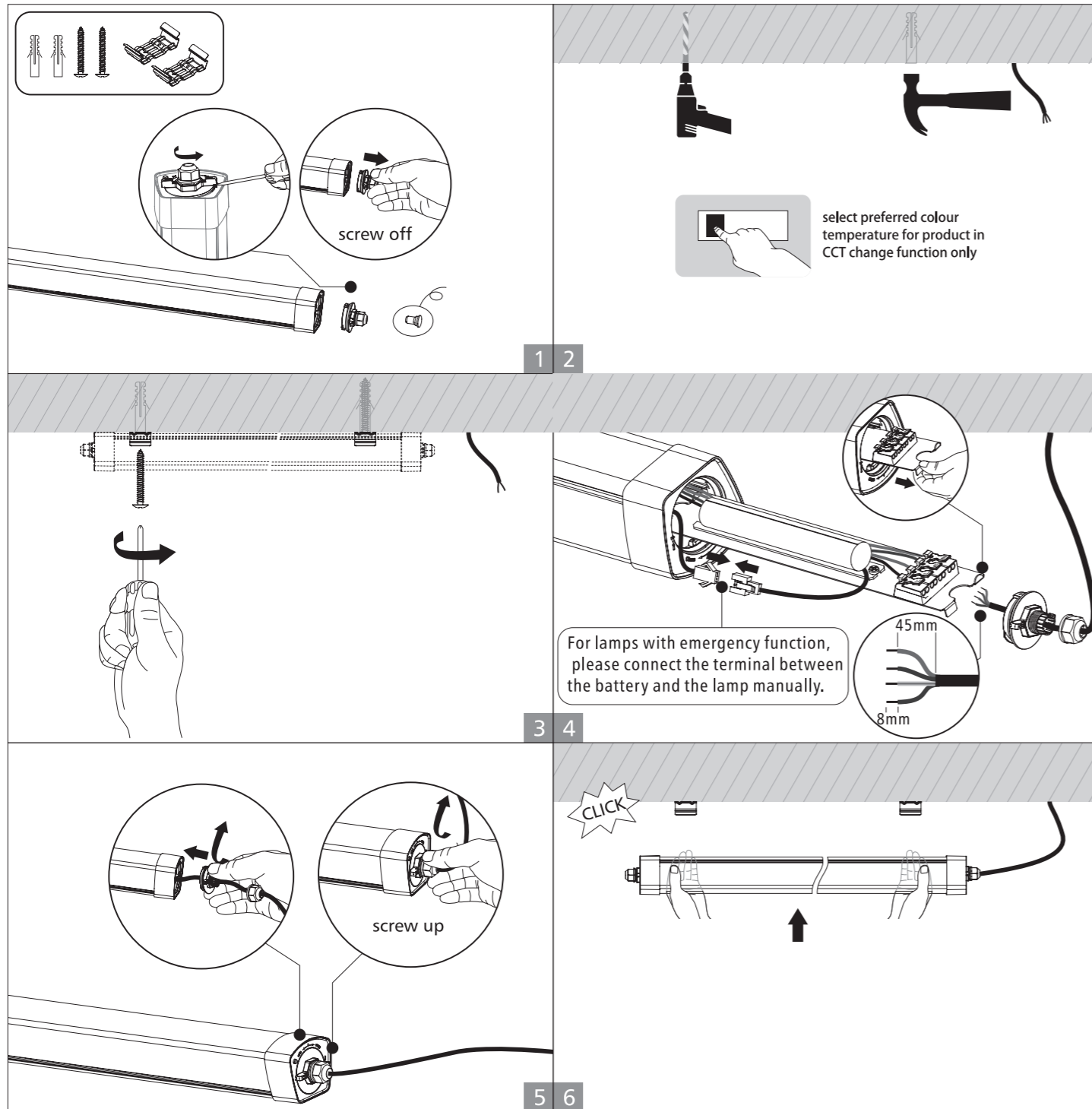
WARNING

1. Switch off before installation.
2. Switch on only after complete installation and examination of the circuit.
3. Professional electrician for installation and maintenance only.

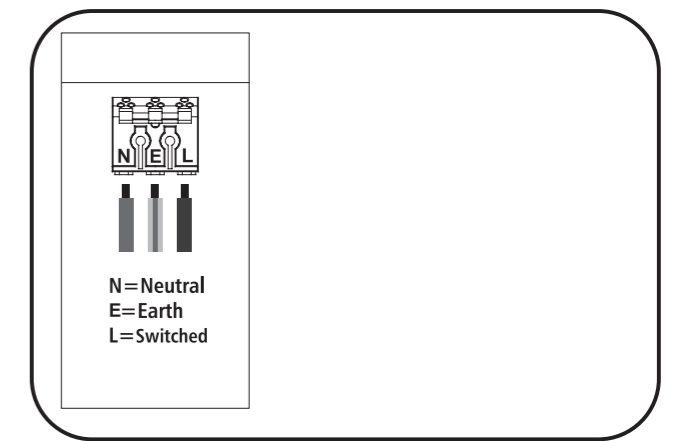
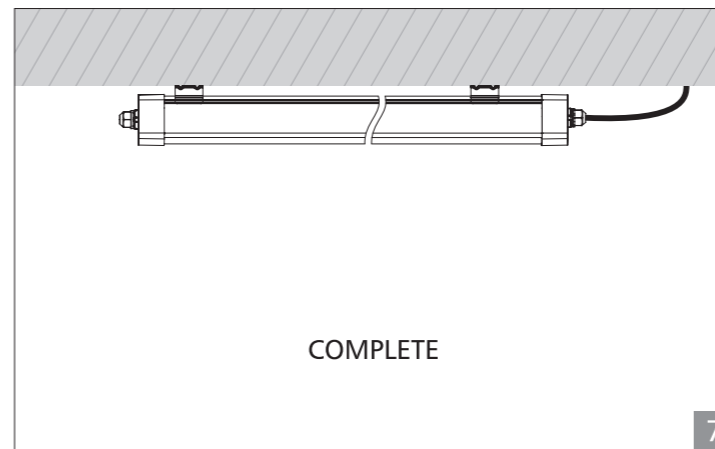
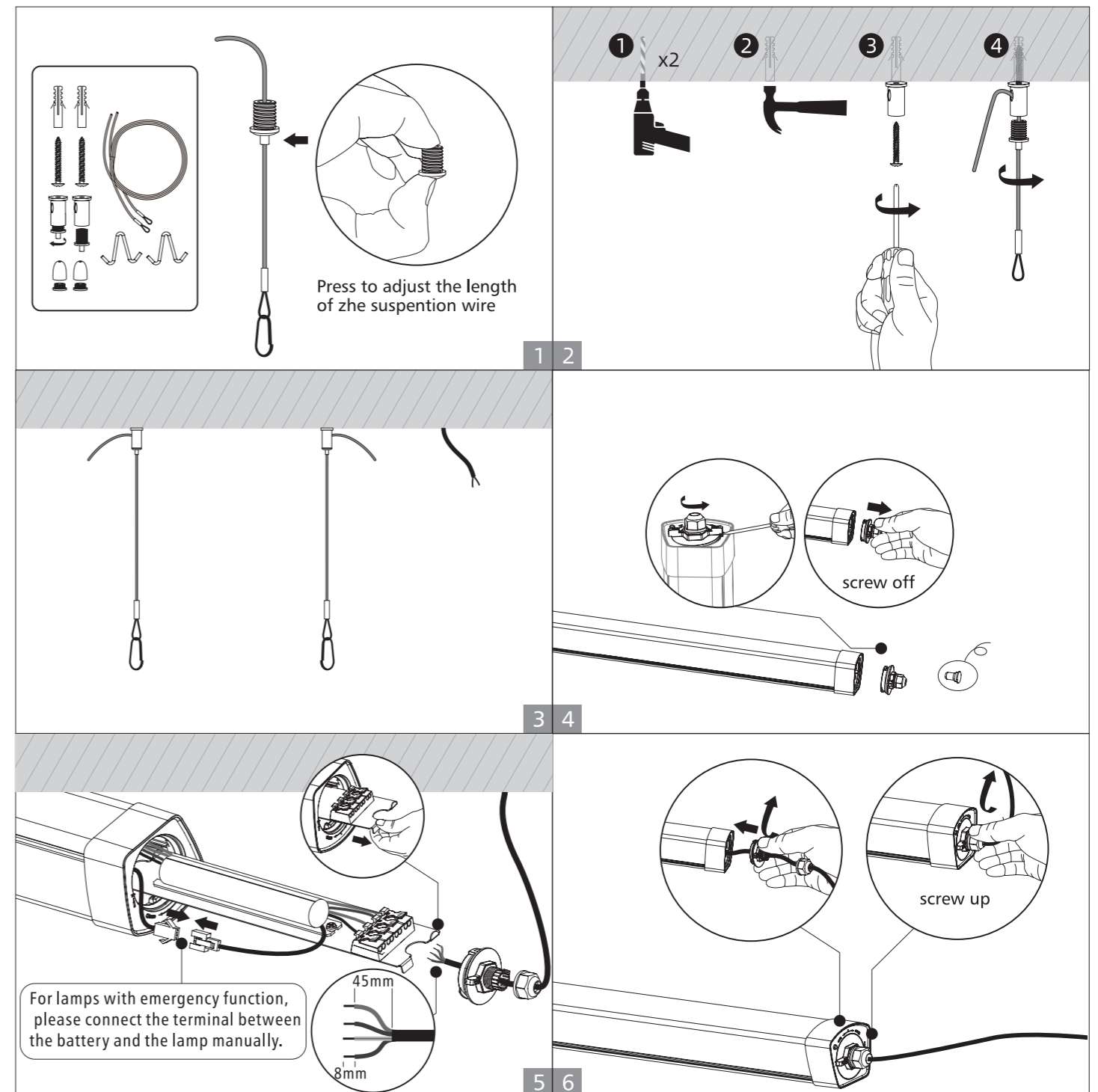


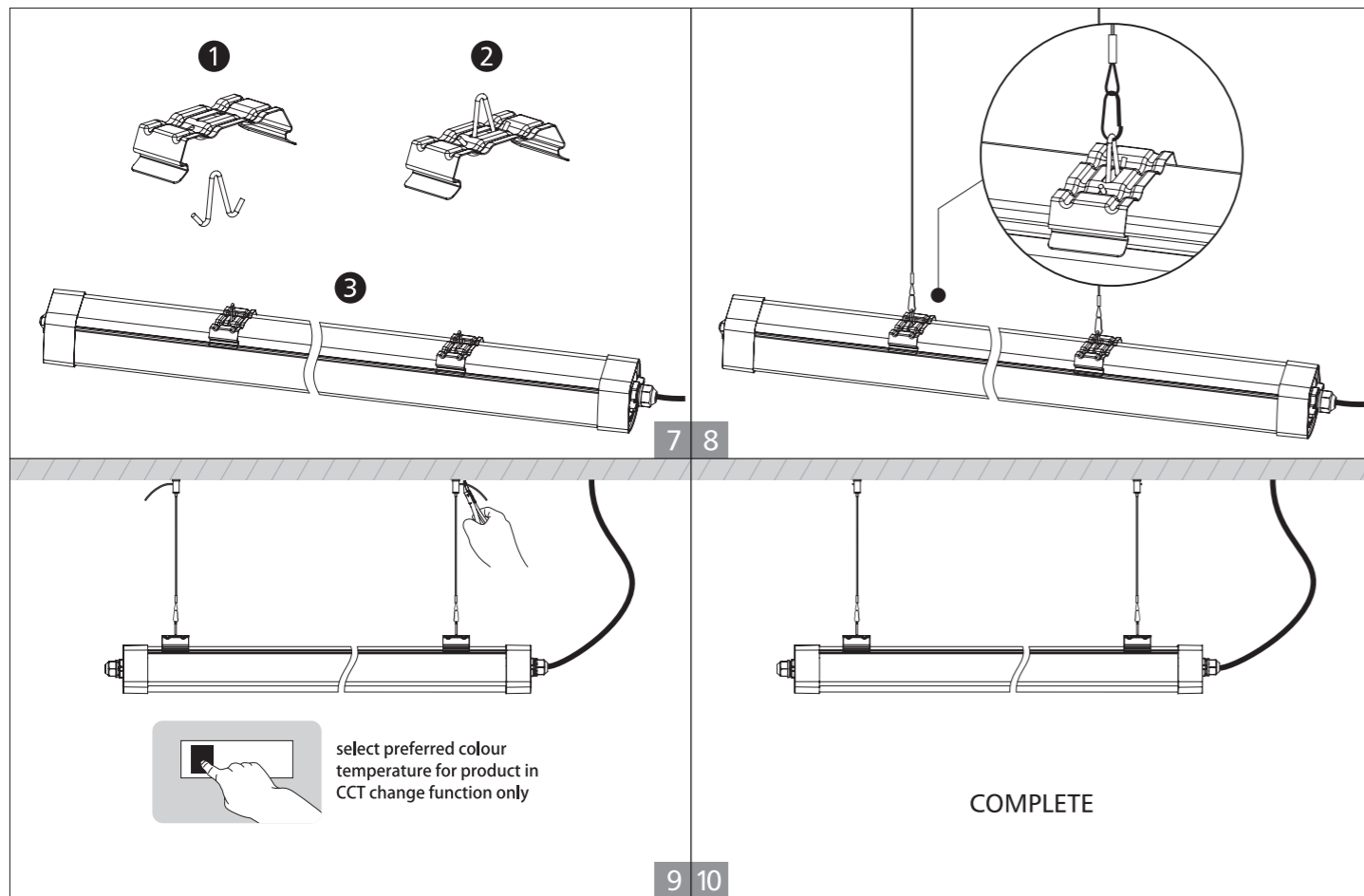
Turn Off power supply before starting any installation. Read instructions & check you have all the tools & accessories to complete the installation correctly.

Surface mounted installation

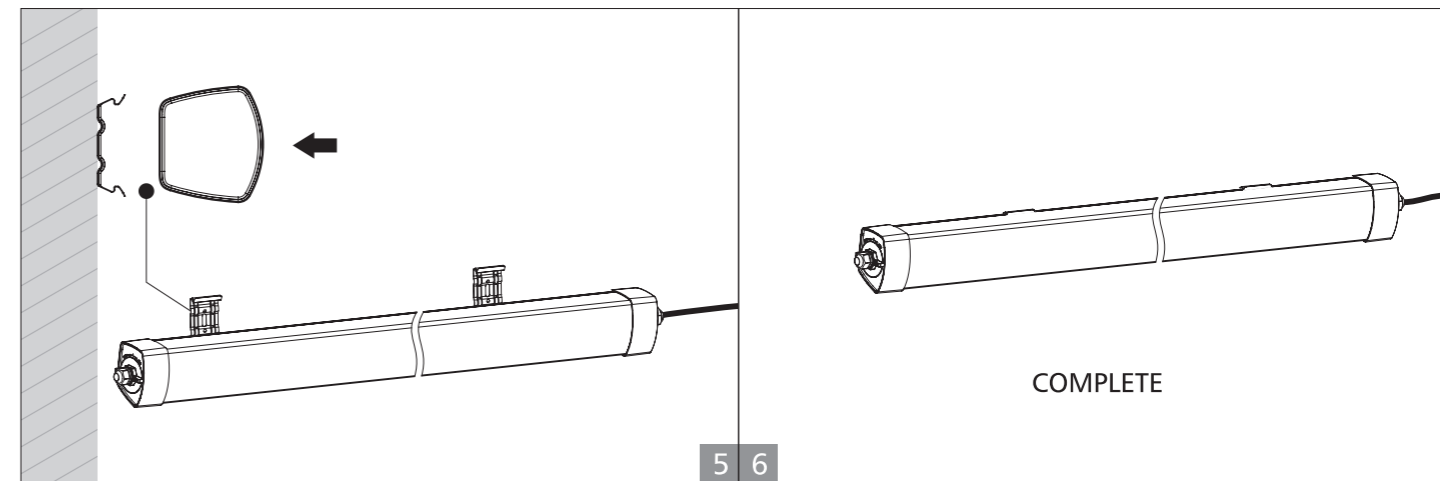
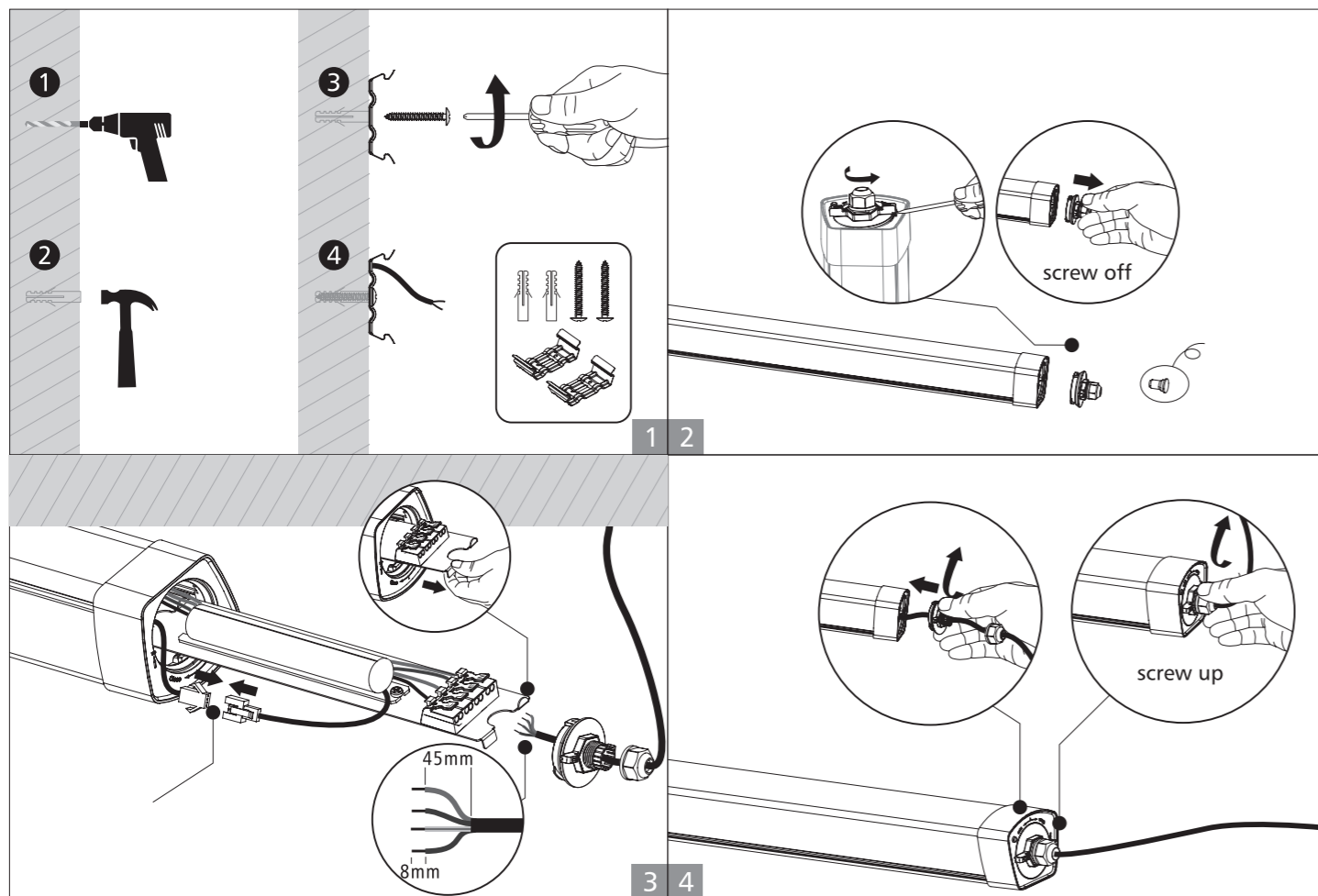


Suspended installation





Wall mounted installation



Splicing for installation

