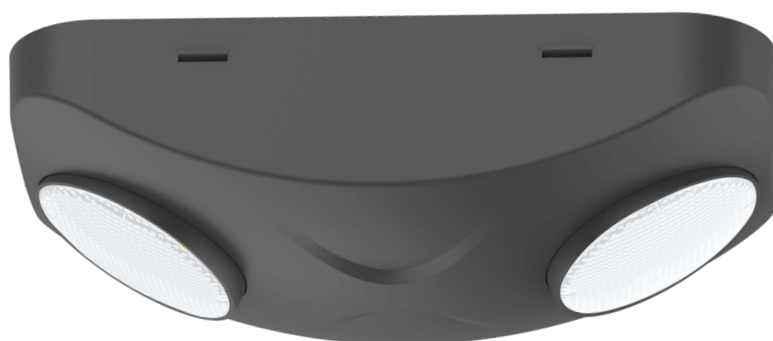


TRONIX

Emergency Light



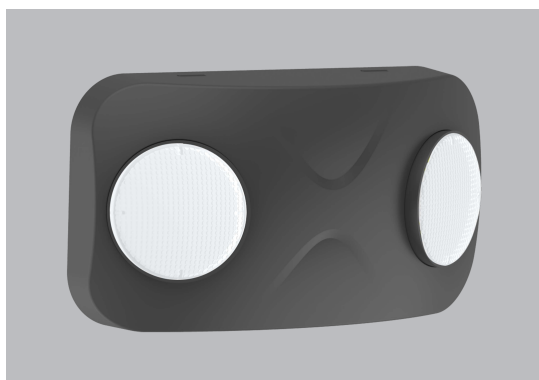
Introduction



This LED emergency light is controlled by smart IC, with self-test function. Twin spot design with adjustable LED lamp head. Small volume and high lumen output.

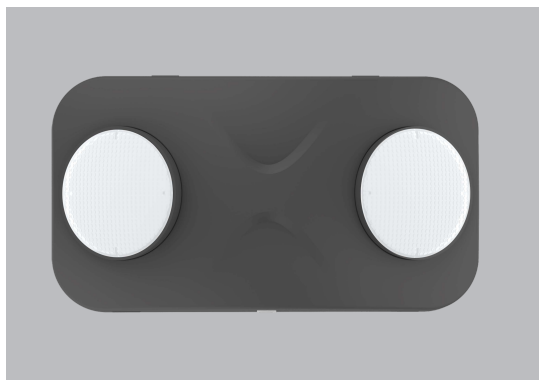
Features

- Two rotatable LED lamp heads.
- High power and high lumen output.
- Elegant design, small volume and weight.
- LiFePO4 battery with better performance and longer life time.



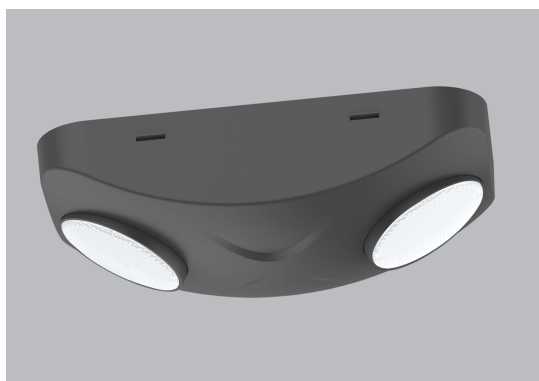
Application notes

- IP20 for indoor use only
- Professional electrician for installation only
- Switch off before installation
- Do not touch when in use
- Keep away from hot steam and corrosive gas



Application Areas

It is designed for indoor applications. It is also widely used for warehouses, walkways, commercial spaces, primary escape routes and stairways etc.



Certificate

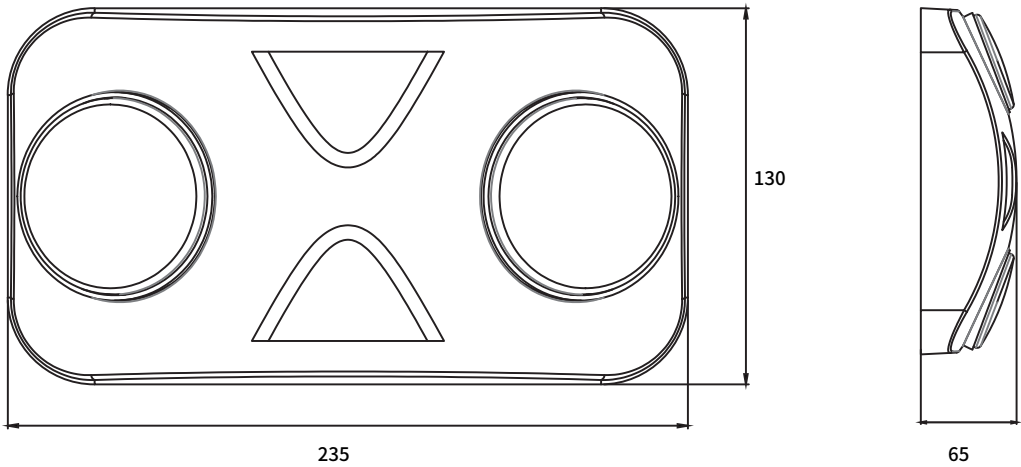


Product Information

Technical Specifications

Model	600-037	600-038
Finishing color	White	Black
Input Voltage	220-240VAC	
Mains Power	8W Max.	
Lumen Output	1200Lm	
Charge Duration	24h	
Discharge Duration	3h	
Battery Type	LiFePO4 6,4V6000mAh	
Test Mode	Auto Test	
LED	SMD2835	
CCT(K)	5000K	
CRI	>70	
LED Driver	Built-in	
Protection Class	Class II	
IP Rating	IP20	
Material	PC	
Glow wire test (°C)	Cover 850°C Lens 750°C	
Operating Temp.(°C)	0°C ~45°C	
Storage Temp.(°C)	0°C ~65°C	

Dimensions



Driver data Sheet

Model	600-037 600-038
Mains Power	8W Max
Frequency	50/60Hz
Input Voltage	AC220-240V
Efficiency	≥70%
Power Factor	≥0.3
Input Current	≤0.12A
Full load output voltage	DC24V
Output Current	330mA±10%
IK Rating	IK07
Surge	0.5KV
Withstand voltage	AC3750V

Information Automatic test

1. Instruction for Automatic test function

Once the unit is powered up, a self-diagnostics test will be automatically initiated:

- Check battery, lamp, charge board and transfer fault all the time.
- Run 3mins duration test every month.
- Run 3H duration test every year.

Note: All test functions are preset and no need field adjustment.

2. Dual Colour LED Status Indicator Meaning

- Green indicator solid on: Ready/ Normal Operation
- Red indicator flashes: Require service

·	One flash, 4s pause	Battery disconnected
··	Two flashes, 4s pause	Low battery voltage
···	Three flashes, 4s pause	Charge board fault
····	Four flashes, 4s pause	AC/DC transfer fault
·····	Five flashes, 4s pause	LED lamp fault

Note: When the fault is recovered, press the test button for 2s, the red flashing indicator will turn green. The fault is cleared, and the unit is back to normal.

Press test button once	run a 30s duration test
Press test button twice within 2s	run a 3mins duration test
Press test button 3 times within 2s	run a 30mins duration test
Press test button 4 times within 2s	run a 3H duration test