

ESDEC

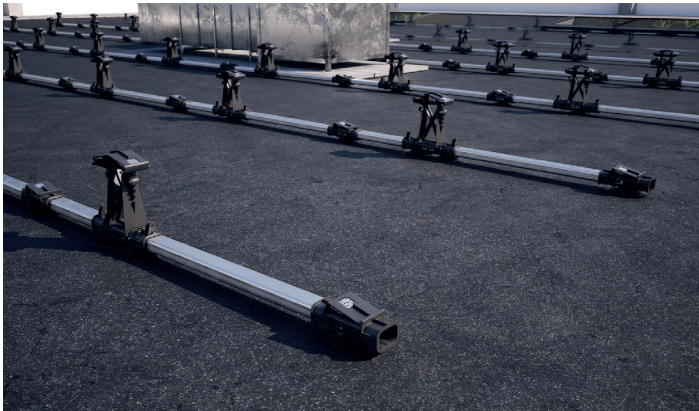
INNOVATIVE MOUNTING SYSTEMS



**THE
VERSATILE
CLICK SYSTEM FOR
FLAT ROOFS**

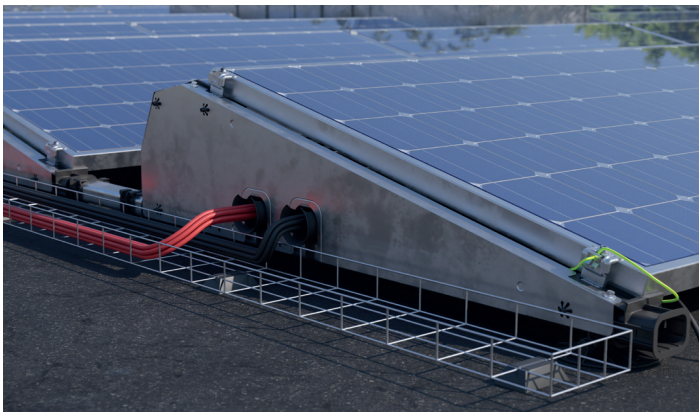
FLATFIX FUSION

THE ADVANTAGES OF FLATFIX FUSION



FLEXIBLE AND EASY

- Completely modular system
- Flexible installation: Easy to build around obstacles
- Aesthetic lightweight system
- Single or dual setup
- Suitable for residential and commercial projects
- Strong and durable clamping force with metal insert in high and low base
- For panels up to 1150mm wide and 2190mm long



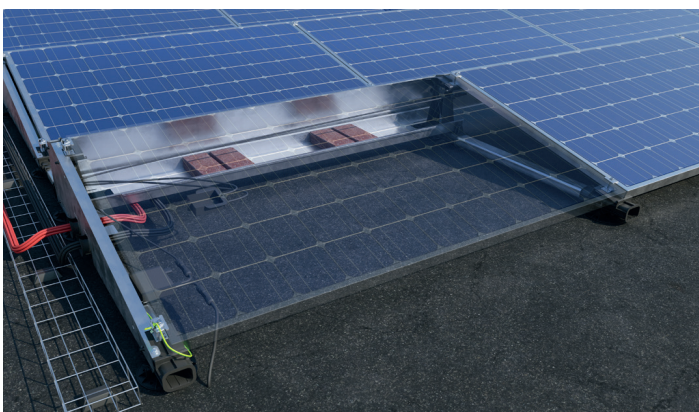
RELIABLE

- Aerodynamic design with rounded corners and smooth material finish
- Robust system thanks to connectors parallel and perpendicular to the panels
- Wind deflectors designed for maximum safety
- Tested to international standards
- 20-year warranty



SAFETY FOR THE ROOF

- For every type of roof
- Roof support with movable connectors
- Unique thermal decoupling prevents damage to roof material
- Optimum point pressure due to distributed ballast
- Integrated grounding and bonding in high and low base in accordance with IEC 60364 series
- Cable exits and cable guides (optional) for safe cable management



EASY TO INSTALL

- User-friendly click system
- Optimizer ready cable clip for easy attachment and safe cable removal
- Grounding clamp can easily be incorporated onto the end clamp
- Optimizer clip can also be used for most micro inverters
- For the most common solar panels (angle of inclination 13°)
- Renewed end clamps for even more powerful and easier installation



COMPLETE AND FLEXIBLE INSTALLATION ON EVERY ROOF

FlatFix Fusion is the modular and flexible mounting system for solar panels on small and medium-sized roofs. Its modular design enables a customized configuration to be created for every roof. Installers can, for example, easily build around obstacles – such as chimneys – with this system. FlatFix Fusion can be set up either in dual or single configuration. FlatFix Fusion is a 100% Dutch product that has proven itself for years. In 2021, the system received an update of a number of components, which not only makes installation even easier for the installer, but also further increases the safety of the roof and the PV system. It is now possible to install solar panels up to 1150mm wide and 2190mm long with FlatFix Fusion.

Easy to install

Esdec was founded by professional installers, the interest of the installer always come first when designing our products. Simplicity and flexibility were therefore the starting points in the design of our FlatFix Fusion system. Smart click connections enable the system to be assembled quickly. Handy features on the clamps and on the wind deflectors make installation even easier.

Safety for the roof

The different components are connected using fast-click connectors. The roof supports with movable connectors allow the system to move (expand and shrink) to prevent damages of the roof material. As a result, the thermal movements of the building are not transmitted to the PV system and vice versa. The 2021 upgrade includes a safe and aesthetic solution for cable management: cables are guided through the wind deflectors with a cable exit guide.

Reliability

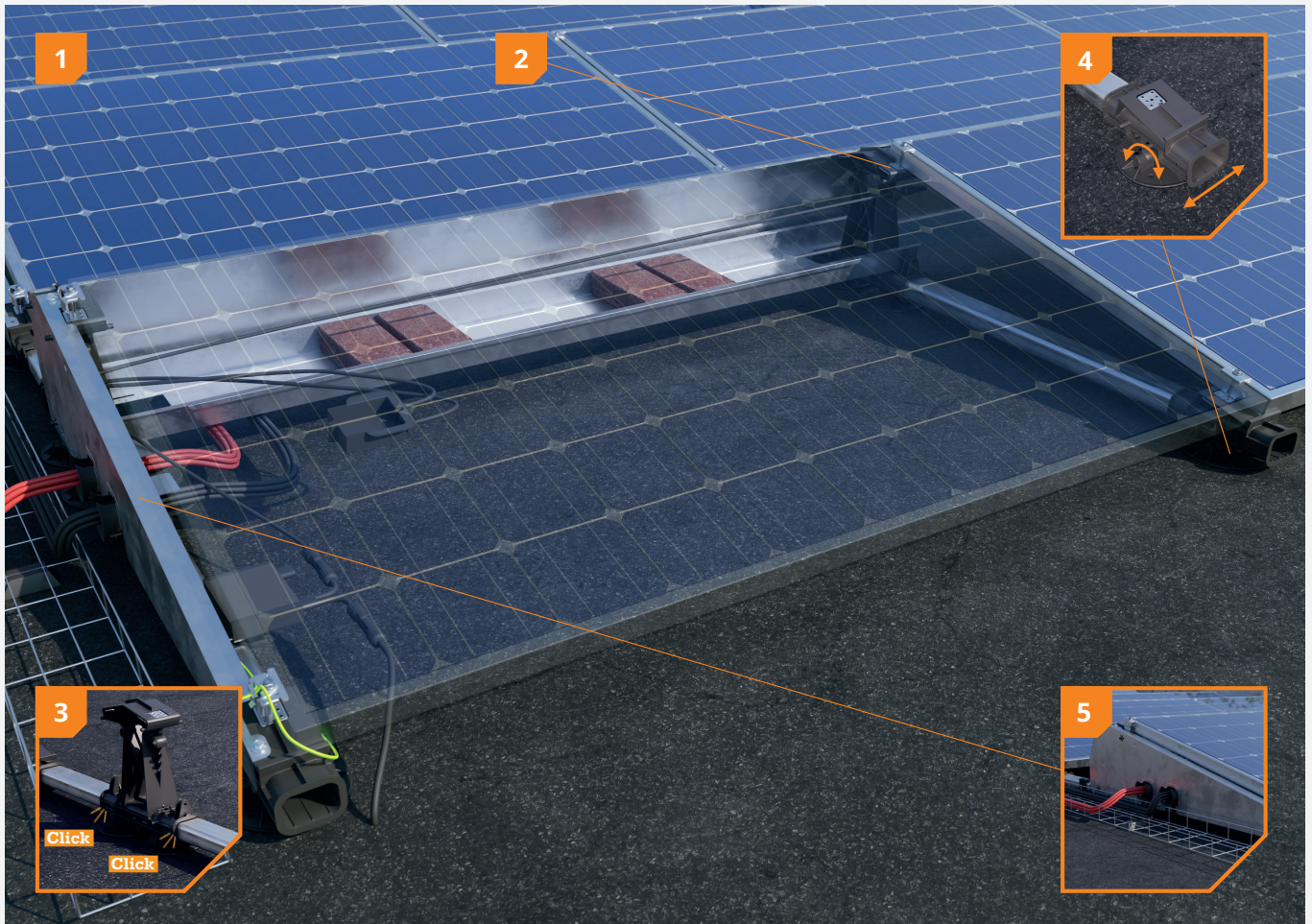
The patented FlatFix Fusion system has been extensively tested on fire safety, wind resistance and corrosion. With even stronger and durable clamping force with a metal insert in the high and low base. FlatFix Fusion is a high-quality mounting solution. It complies with the strictest international standards and comes with a 20-year warranty.

ADVANTAGES FOR THE INSTALLER

- ✓ Modular mounting solution with click connection
- ✓ Flexible installation on any roof
- ✓ Integrated grounding and equipotential bonding
- ✓ Ease of installation with optimizer clip with integrated cable clip

ADVANTAGES FOR THE END USER

- ✓ Roof-specific configuration
- ✓ Safe and reliable
- ✓ No damage of the roof material
- ✓ 20-year product warranty



1 Strong, lightweight system

The different components enable flexible row lengths. This makes it possible to create a roof-specific setup and, for example, to build around obstacles.

2 Easy maintenance

FlatFix Fusion is made of strong, lightweight materials. With the high and low base, with a metal insert, the clamping force remains optimal after removal and reinstallation of panels.

3 Unique click connection

The revolutionary, unique click connection makes the FlatFix Fusion a very quick and easy-to-install mounting solution.

4 With thermal decoupling

The roof supports with movable connectors give the system space to expand thermally without damaging the roof material.

5 With integrated cable management

The cables and plugs of the solar panels can be safely and easily attached to the mounting solution. With the cable exits in the wind deflectors and with the cable exit guides, cables can be stowed and guided in a safe way.

FlatFix Fusion Portrait




Extension or carport?








FlatFix Fusion is ideal for small roofs. While in a landscape orientation you can only fit 3 panels on an extension of approximately 2.5 meters, with the portrait orientation you can fit as many as 5. Would you like to see whether your project can make use of this roof optimization? Check out our calculator and immediately download your packing slip and installation plan!

SYSTEM COMPONENTS

-  **FlatFix Fusion roof support**
1007012
-  **FlatFix Fusion low base**
1007022
-  **FlatFix Fusion high base**
1007031
-  **FlatFix Fusion wind deflector rear*/****
1007201
-  **FlatFix Fusion wind deflector left****
1007224 with base profile 940mm
1007226 with base profile 1030mm or 1077mm
-  **FlatFix Fusion wind deflector right****
1007225 with base profile 940mm
1007227 with base profile 1030mm or 1077mm
-  **FlatFix Fusion ballast container***
1007202
-  **FlatFix Fusion stabilizer***
1007203

	FlatFix Fusion base profile			
	210mm	1007121**	940mm	1007194
	370mm	1007137**	1030mm	1007195
	550mm	1007155**	1077mm	1007196
	750mm	1007175**		



PORTRAIT

-  **FlatFix Fusion Low Base Portrait**
1007027
-  **FlatFix Fusion High Base Portrait**
1007037
-  **FlatFix Fusion Wind Deflector Rear Portrait Black**
1007231
-  **FlatFix Fusion Wind Deflector Left Portrait Black**
1007232
-  **FlatFix Fusion Wind Deflector Right Portrait Black**
1007233
-  **FlatFix Fusion Ballast Container Portrait**
1007230
-  **FlatFix Fusion Base Profile 1670mm**
1007197

* Also available in 1600, 1700, 1900, 2000 & 2100

** Also available in black



FASTENERS

-  **Esdec mounting screw*/****
6 x 55mm 1000655
6 x 70mm 1000670
6 x 12mm 1000612
-  **Esdec screw**
6,0 x 25mm (self tapping) 1008085
6.3 x 42 mm SW10/T30 (self drilling) 1003016

* Depending on panel thickness and related end clamp

** Also available in black







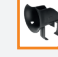

CLAMPS

-  **Flatfix Fusion universal module clamp with bonding****
1003022
-  **FlatFix end clamp 30-50mm*/****
10043_
10044_ (black)

* Depending on panel thickness (in mm)

** Also available in black

ACCESSORIES

-  **FlatFix Fusion grounding spring**
1007502*
-  **FlatFix Fusion grounding clamp (6mm²)**
1007505
-  **FlatFix Fusion TPO Mat**
1007015
-  **FlatFix Fusion grounding bracket**
1007503
-  **FlatFix Fusion roof support adapter**
1007011
-  **FlatFix Fusion low base extension**
1007022-WP
-  **FlatFix Fusion Cable exit guide**
1005570
-  **FlatFix Fusion MLPE Clip Light Weight up to 2kg*****
1007042

* Also available ready-assembled, see SYSTEM COMPONENTS

*** Also suitable for most micro inverters




Calculator

In the Esdec calculator you can manage and calculate all your projects, for both pitched and flat roofs. Flat roofs: our user-friendly tool lets you perform technical calculations for roof heights of up to 20 metres.

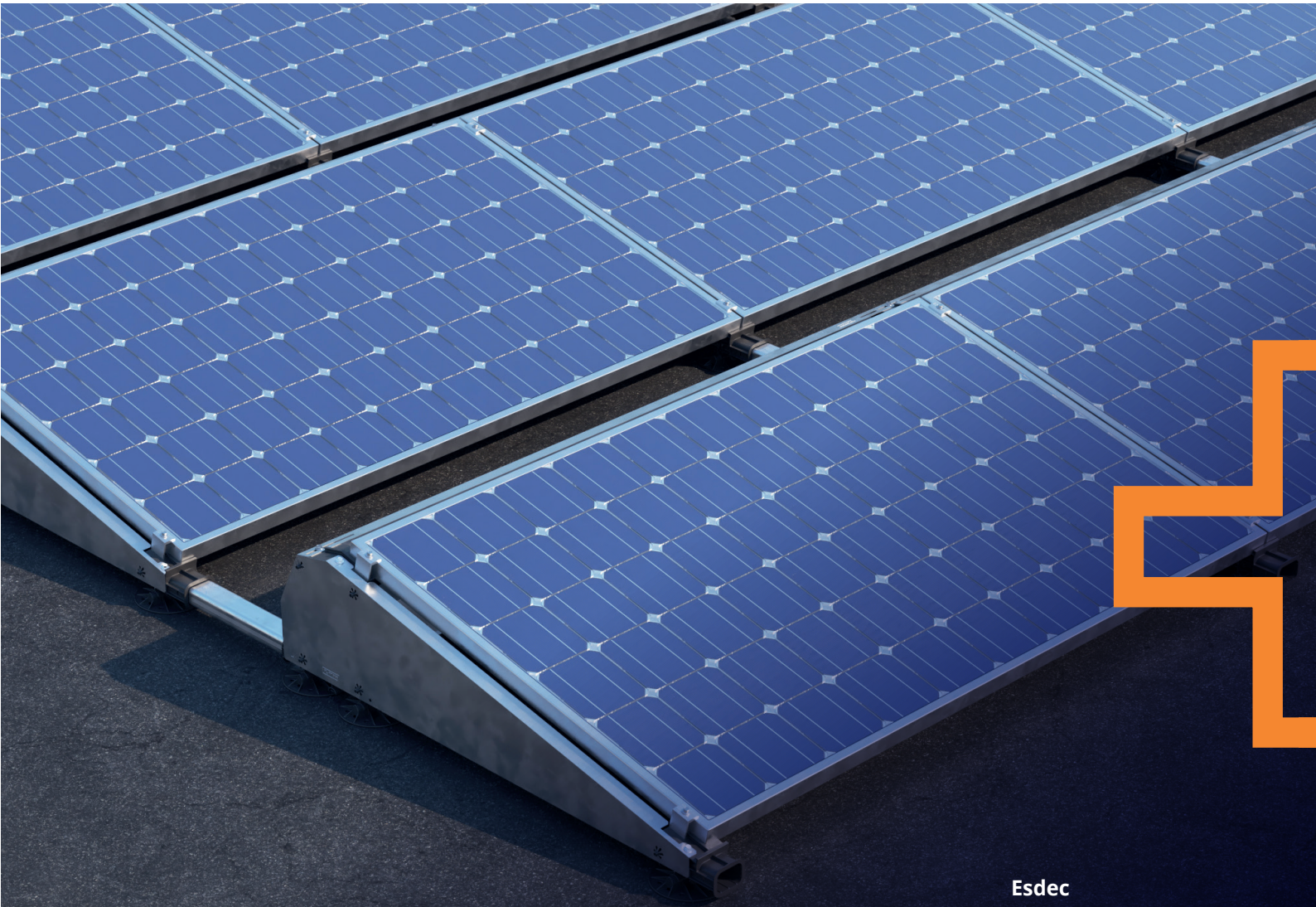
Go to esdec.com/en/calculator



Warranty

-  Use of premium materials
-  Thoroughly tested
-  20-year product warranty





16042024

BUILDING VALUE⁺ FOR SOLAR PROFESSIONALS

Esdec

Londenstraat 16
7418 EE Deventer
Nederland

☎ +31 850 702 000

✉ info@esdec.com