

ESDEC

INNOVATIVE MOUNTING SYSTEMS



CERTIFIED

A large, stylized orange graphic element resembling a stepped staircase or a series of connected 'L' shapes, positioned on the left side of the page.

**THE NEW
STANDARD FOR
MOUNTING ON
PITCHED ROOFS**

CLICKFIT EVO

TILED ROOF

CLICKFIT EVO'S 4 BASIC COMPONENTS

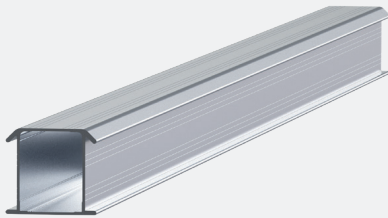
HOOKS OR SCREWS



1. UNIVERSAL ROOF HOOK / TRUSS HOOK

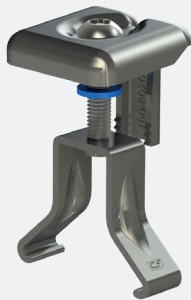
Quick & flexible installation with the ClickFit EVO Universal Roof Hook without screwing. Do you prefer screws? Use the ClickFit EVO Truss Hook. Universal Roof Hook and Truss Hook can be combined in a single roof construction.

- Universal Magnelis® roof hook for all standard tile/batten combinations
- Easy mounting process from the top
- Stepless adjustment of height and width
- Better point load distribution, lower risk of tile breakage and leakage
- Self-aligning click connection: easier and faster
- Can be used for horizontal and vertical mounting
- Integrated cable management



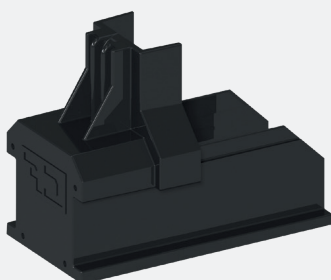
2. MOUNTING RAIL

- Quick and easy to click into the ClickFit EVO click connection on the hook
- Available in different lengths
- Rails can be coupled with a coupler



3. UNIVERSAL MODULE CLAMP

- Universal module clamp: suitable for solar panels with frame thickness between 30 and 50 mm.
- Can be used as centre clamp or as end clamp in combination with end cap
- Standard assembly
- Including bonding for the solar panels
- Available in grey and black



4. END CAP

- End cap holds the module clamp in its position
- Elongated end cap to allow for aesthetically pleasing finish
- Available in grey and black



MOUNTING HAS NEVER BEEN EASIER

ClickFit EVO; universal and fast

Esdec developed ClickFit EVO specifically for the professional solar installer. The mounting system consists of 4 components that can be used to mount all conventional solar panels on any tiled roof. Thanks to its unique properties, this mounting system allows for a mounting process that is twice as fast.

Mounting method of your choice; hooks or screws

With the hook and click technique of ClickFit EVO, you can easily, quickly and safely install solar panels on a tiled roof. The ClickFit EVO Universal Roof Hook eliminates the need to drill holes in the roof construction, allowing the roof construction of the end user to stay fully intact. The universally adjustable roof hook fits all standard roof tile/ batten combinations. The integrated water barrier reduces the risk of leaks.

Do you prefer screwing into the truss? Use the ClickFit EVO Truss Hook. This system consists of a hook with a wider top plate that can be screwed onto a truss, tile or roof boarding. This offers flexibility in the placement and attachment of the truss hook. You can also combine the ClickFit EVO Universal Roof Hook and Truss Hook in a single project.

Flexible and easy mounting process

If you work with ClickFit EVO, one tool is all you need. The revolutionary hook and click technique eliminates the need for other tools. Thanks to the smart design of this innovative mounting system, you can place the panels both in landscape or portrait orientation.



CERTIFIED

ClickFit Evo for tiled roofs is MCS certified

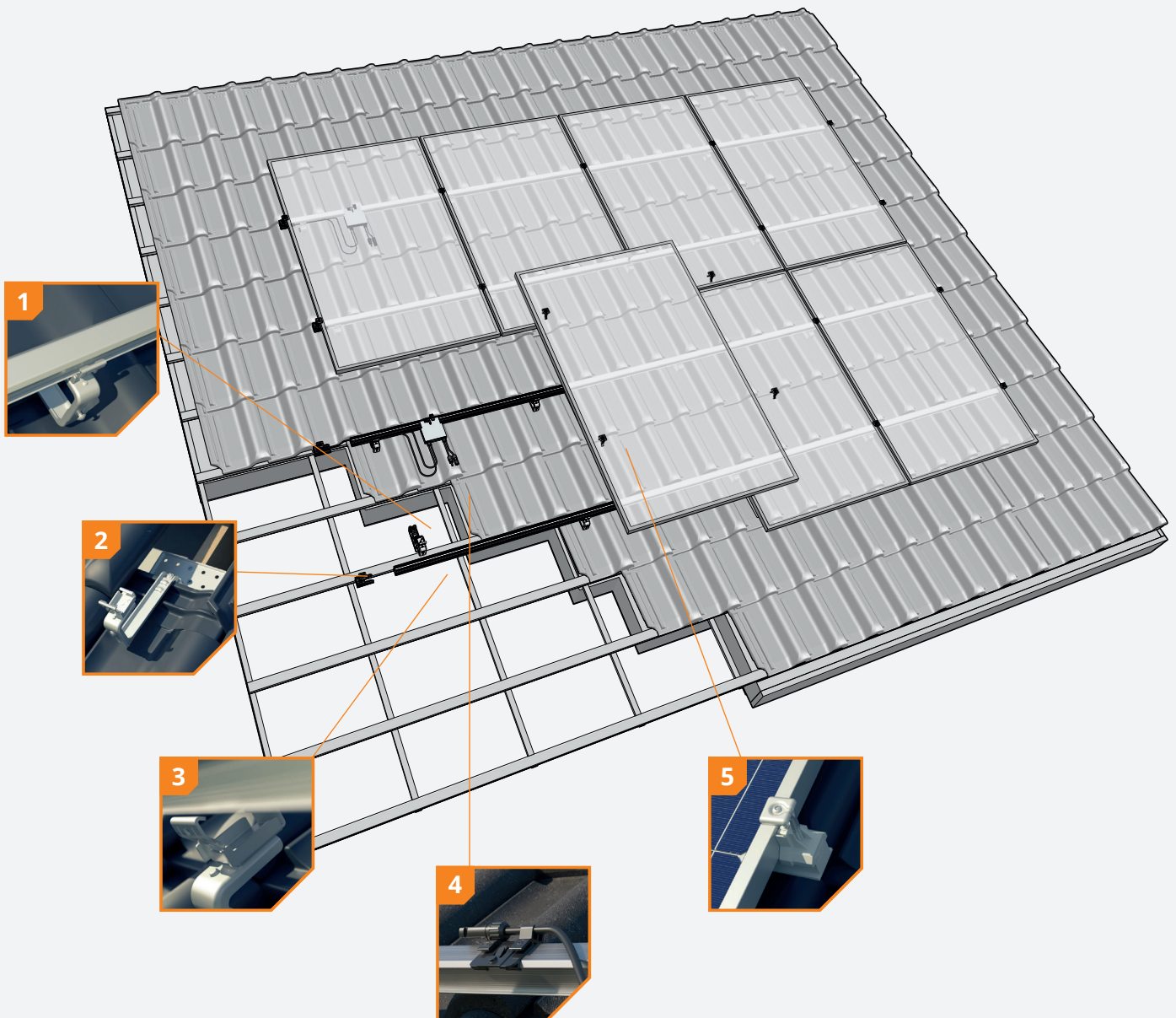
ClickFit Evo for tiled roofs, both in the version with the truss hook and the version with the universal hook, is MCS certified. Meeting MCS recognised industry standards proves the high quality, competency and compliance of ClickFit Evo for tiled roofs.

BENEFITS FOR THE INSTALLER

- ✓ Up to 40% quicker mounting
- ✓ Only 4 components
- ✓ Only 1 tool necessary
- ✓ 20-year product warranty

BENEFITS FOR THE END USER

- ✓ Rock solid basis for solar panels
- ✓ The roof stays intact
- ✓ Reliable
- ✓ 20-year product warranty



1 Universally adjustable

The universal Magnelis® roof hook is infinitely adjustable to fit all standard roof tile/batten combinations. In addition, the hook is infinitely adjustable to suit all common types of tiles and roof curves.

2 Screw option possible

ClickFit EVO can also be mounted with a screw-mounted roof hook, when clamping with the roof hook is not an option. Both variants can also be used jointly in a project in line with each other.

3 Patented ClickFit EVO click connection

The ClickFit EVO roof hook features a self-aligning click connection. As a result, the mounting rail is always quick and easy to assemble.

4 Integrated cable management

Cables and connectors are neatly and securely held in place in the roof hook. You can also simply click the optimizer or micro-inverter onto the rail with the MLPE clip.

5 Always the right measurements

The universal module clamp is adjustable in height and therefore suitable for solar panels with a frame thickness between 30 and 50 mm. Due to its smart design, this panel clamp can be used as a mid clamp and as an end clamp (in combination with the end cap).

ROOF FASTENERS



ClickFit EVO Universal Roof Hook
1008040



ClickFit EVO Truss Hook
1008045

MOUNTING RAIL



ClickFit EVO Mounting rail	
Mounting rail 1188mm	1008131
Mounting rail 2338mm	1008132
Mounting rail 3488mm	1008133
Mounting rail 3500mm	1008007
Mounting rail 4638mm	1008134
Mounting rail 5770mm	1008135

MODULE CLAMP & END CAP



ClickFit EVO Module Clamp Universal grey
1008020



ClickFit EVO Module Clamp Universal black
1008020-B



ClickFit EVO Mounting rail End cap grey
1008060



ClickFit EVO Mounting rail End cap black
1008060-B

ACCESSORIES



ClickFit EVO Mounting rail Coupler
1008061



ClickFit EVO MLPE Clip Light Weight up to 2kg
1008067



ClickFit EVO MLPE Clip Heavy Weight from 2 to 8kg
1008068



ClickFit EVO Roof hook Spacer
1008063



ClickFit EVO Auxiliary set with cable clip
1008064



ClickFit EVO Self drilling screw 6,3x42mm SW10/T30
1003016 (required for vertical rail installation)

Calculator

In the Esdec calculator you can manage and calculate all your projects, for both pitched and flat roofs. One platform with all Esdec mounting systems for the most reliable calculation of your project.

- ✓ Save time: manage all your projects on one platform
- ✓ One calculator for projects on pitched and flat roofs
- ✓ All calculations are based on extensive testing and the latest safety standards

Unlimited calculations: use the calculator for your own project calculations without limits on the roof height. The calculator also takes into account the terrain category, snow load and wind zone to provide accurate advice, specific to your project.

Go to esdec.com/en/calculator



Warranty

ClickFit EVO meets all of the requirements and standards that currently apply. ClickFit EVO comes with a unique 20-year warranty, thus ensuring the system's quality.

- ✓ Use of premium materials
- ✓ Extensively tested
- ✓ 20-year product warranty





**BUILDING VALUE ⁺ FOR
SOLAR PROFESSIONALS**

Esdec

Londenstraat 16
7418 EE Deventer
The Netherlands

☎ +31 850 702 000

✉ info@esdec.com



© 2024