

# TRONIX

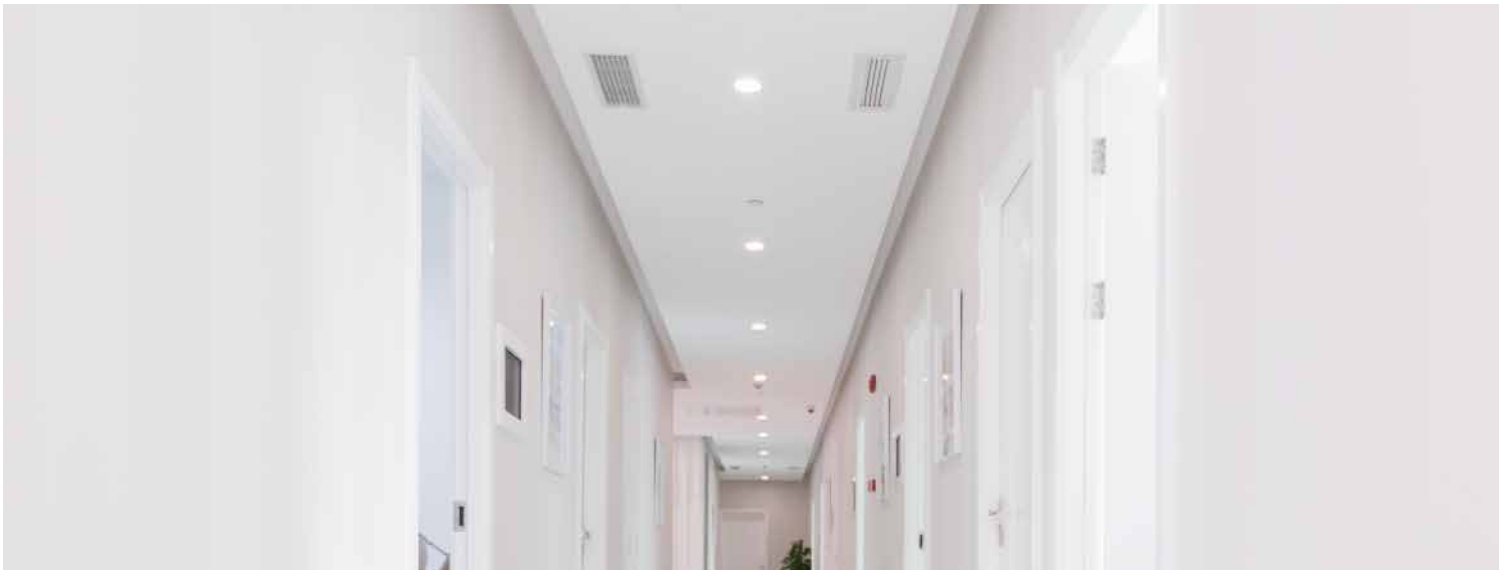
guided by light

SPECIFICATION



- Oval lens for pathway application.
- Round lens for open area application.
- Smart IC control.
- LiFePO4 battery, long life time.
- High power & efficiency LED.





# Introduction

This LED emergency down light is controlled by smart IC, with self-test function. It is All In One type including open area and corridor lens, recessed and surface (option) mounting way. Using the simple line and elegant element, it has the ability to transcend ordinary design, as well as product quality.

## Features

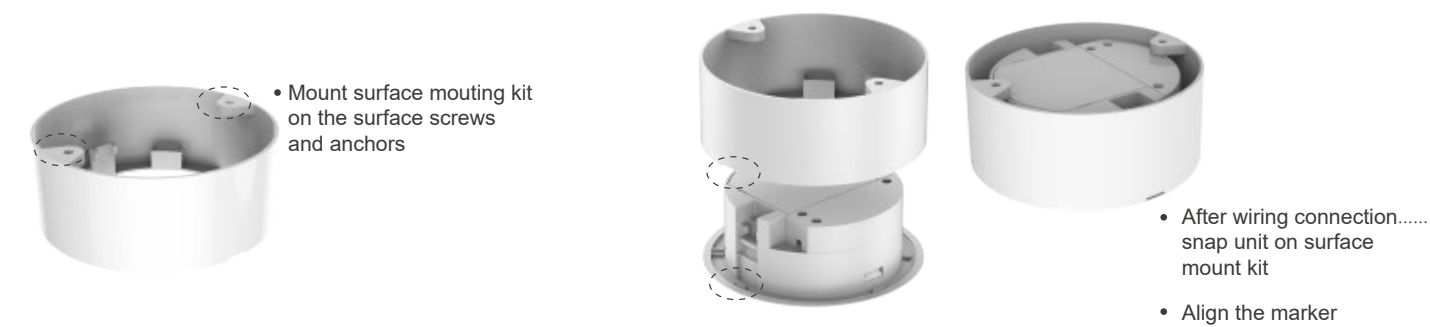
1. Oval lens for pathway application.
2. Round lens for open area application.
3. Smart IC control.
4. LiFePO4 battery, long life time.
5. High power & efficiency LED.

## Application Areas

It is designed for emergency lighting applications in office, supermarket, shop, school, hotel, etc. It is also widely used for public areas, such as stairway, lobby, reception, corridors etc.



# Surface Mounting Kit Installation

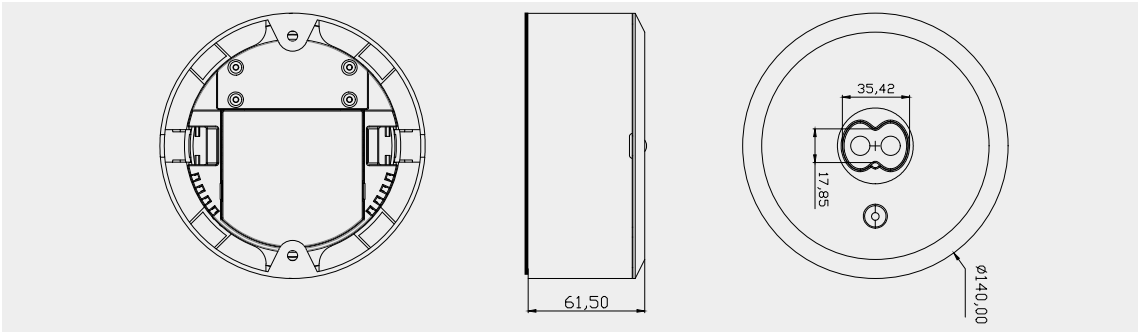


## Driver Datasheet

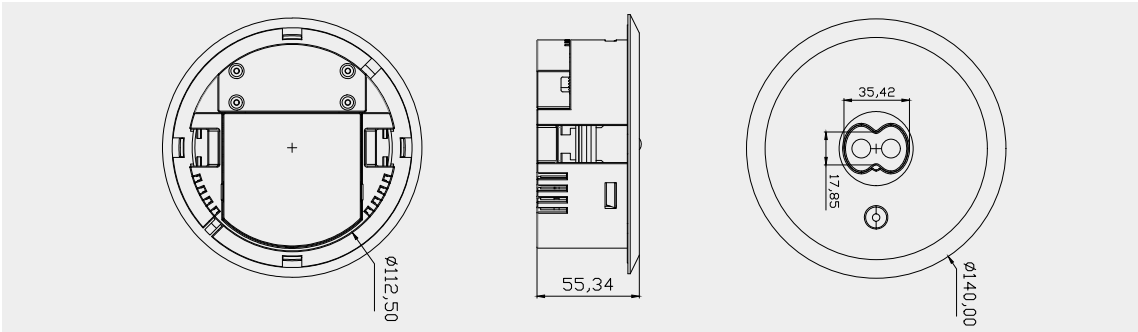
Power consumption	3W
Rated Input Voltage(V)	AC230V
Frequency	50/60Hz
Input Voltage	AC200-240V
Efficiency	≥80%
Total load wattage	2.5W
Power Factor	≥0.3
Rated Input Current	≤0.08A
Full load output voltage	DC2.8-3.2V
Rated output curent	510mA
Output current range	510mA±10%
Power tolerance	10%
Current output tolerance	10%
Short circuit protection	PASS
Over voltage protection	PASS
Over temperature protection	PASS
THD	—
Surge	0.5KV
Withstand voltage	AC3750V

Product Dimension

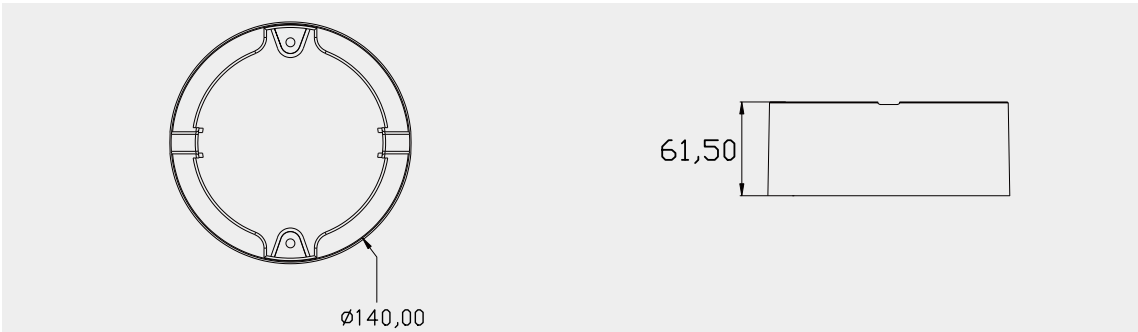
Surface Mounting



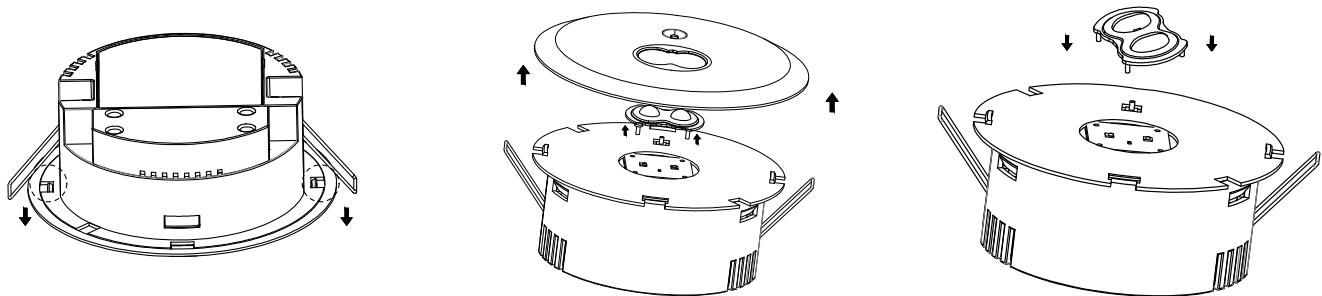
Recessed Mounting



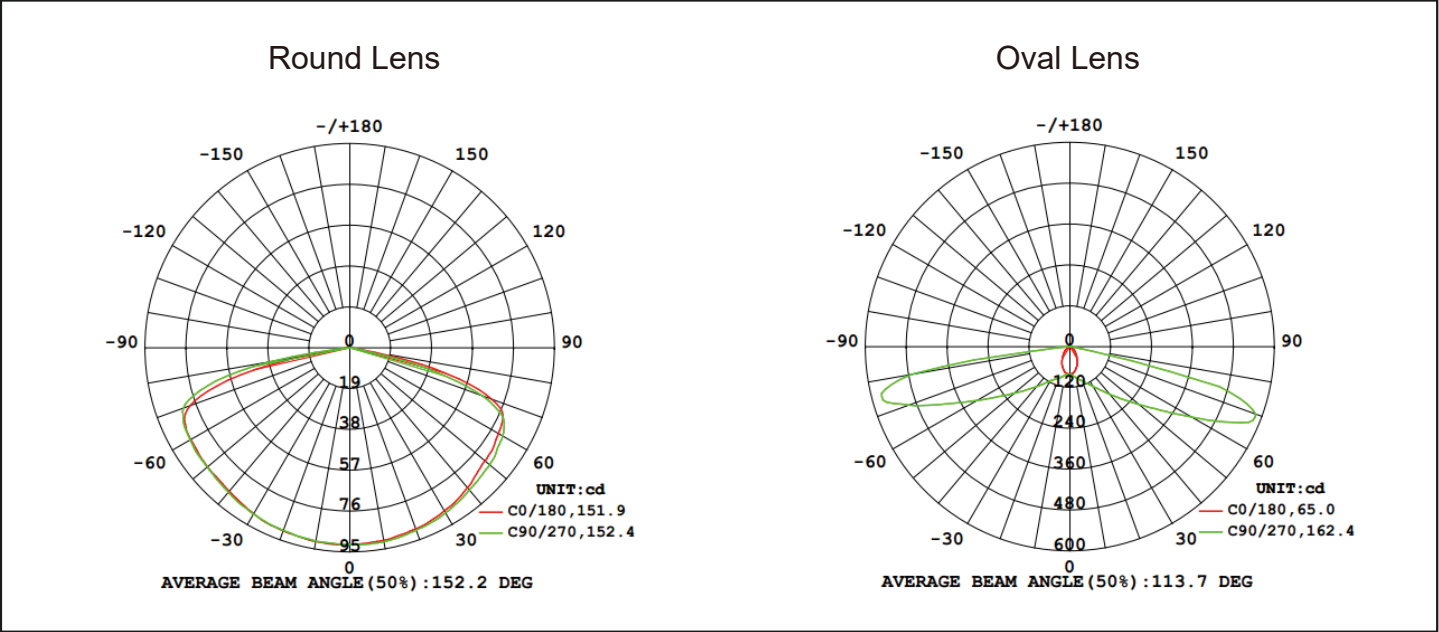
Surface Box



Changeable lens



# Beam Angle



## Instructions for automatic test option

- 1.Once the unit is powered up it will automaticlly initiate a self test and diagnostics as follows:
- Every 4 seconds: Checks for battery disconnection,charger board fault,lamp fault and transfer fault.
  - Every month: Performs a 3 minute duration test.
  - Every year: Performs a 1 Hour or 3 Hours duration test.
- All test functions are factory preset and do not need field adjustment.

### 2.Dual Colour Indicator LED Status Meanings

- Green   Solid On   Ready/Normal Operation
- Red     Requires Service

•	One flashes, 4 second pause	Battery not connected
..	Two flashes, 4 second pause	Battery short or low battery voltage
...	Three flashes, 4 second pause	Charger board fault
....	Four flashes, 4 second pause	AC/DC transfer fault
.....	Five flashes, 4 second pause	LED lamp fault

NOTE:After repairing a service fault,press and hold the test button for 2 seconds to reset the flashing indicator light to green.

### 3.Manual Testing

Press test button once	30 second duration test
Press test button twice within 2 seconds	3 minute duration test
Press test button 3 times within 2 seconds	30 minutes duration test
Press test button 4 times within 2 seconds	1 or 3 hours duration test