

**DSCC-IH6R**  
**Adapter/Hilfskontakt**  
**Adaptor/Auxiliary Contact**  
 2CDS200933R0012

| Compatibility<br>with main<br>devices | C |   |   |
|---------------------------------------|---|---|---|
| DSE201 NS                             |   |   |   |
| DSN201E                               | ✓ | ✓ |   |
| GS201C                                |   |   |   |
| S201NC                                |   |   |   |
| DS202CR                               | ✓ |   | ✓ |

**Connection with**  
**DSE201 NS**  
**DSN201E**  
**GS201C**  
**S201NC**

**ABB STOTZ-KONTAKT GmbH**  
 Eppelheimer Str. 82  
 69123 Heidelberg  
 Germany  
[www.abb.com/lowvoltage](http://www.abb.com/lowvoltage)



**ABB**

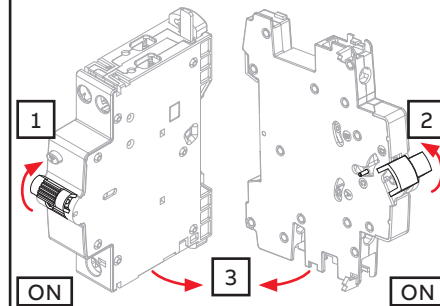
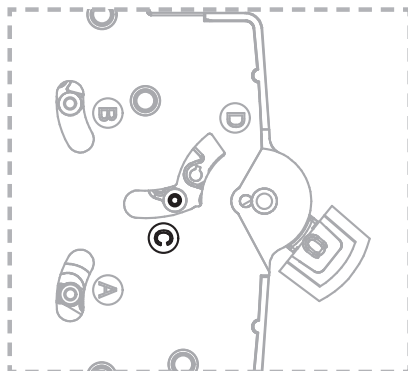
2CDS200928P0013 Rev. A

ABB Limited  
 Tower Court  
 Coventry  
 CV6 5NX, UK

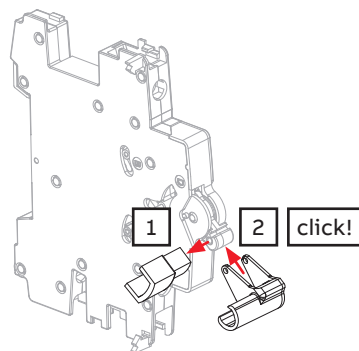
**UK**  
**CA**



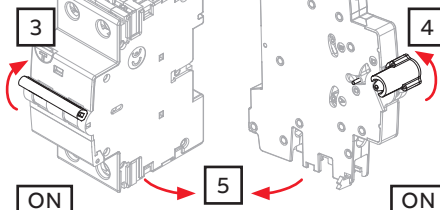
EN: Warning! Installation by person with  
 electrotechnical expertise only.  
 DE: Warnung! Installation nur durch  
 elektrotechnische Fachkraft.  
 IT: Avvertenza! Fare installare solo  
 da un elettricista qualificato.  
 FR: Avertissement! Installation uniquement par  
 des personnes qualifiées en électro technique.  
 ES: ¡Advertencia! La instalación deberá ser realizada  
 únicamente por electricistas especializados.

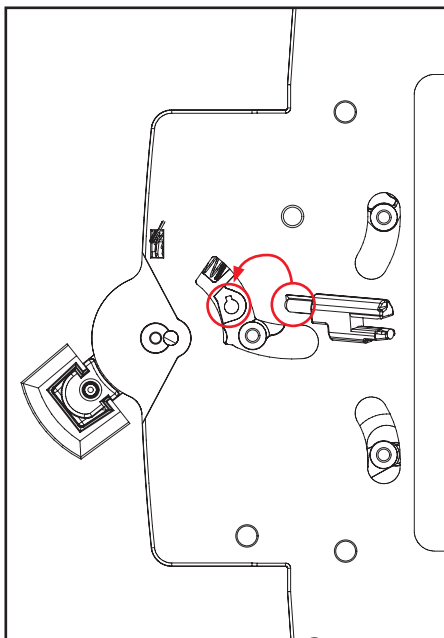


**Connection with**  
**DS202CR**

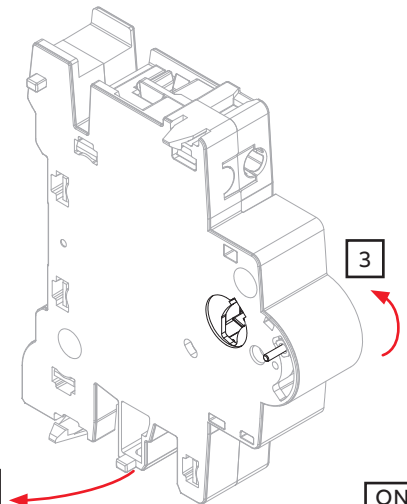
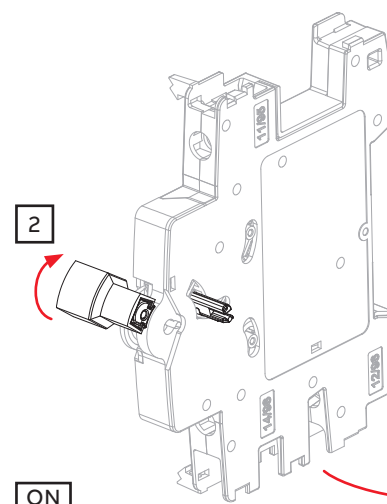
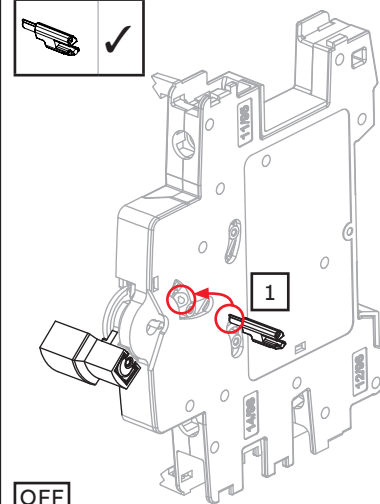


OFF

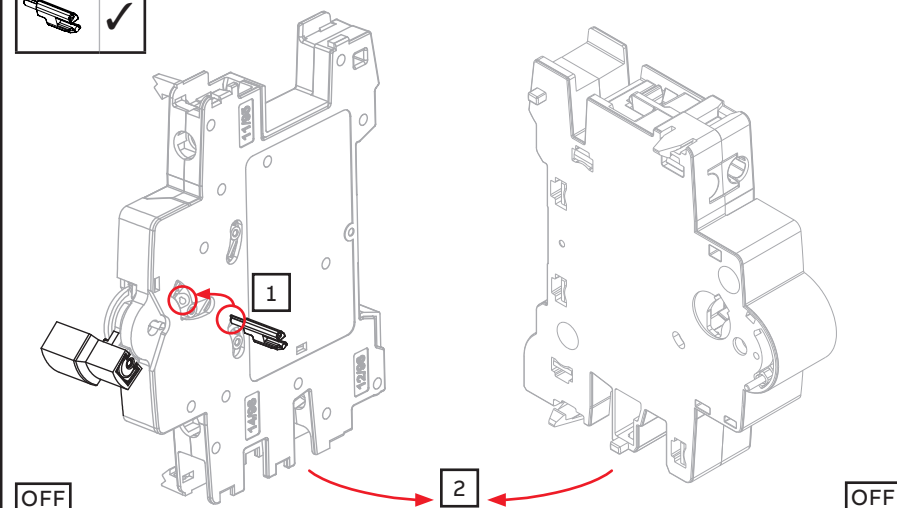




Connection with  
S3C-A  
F2C-A  
S2C-OVP



Connection with  
S2C-UA  
S3C-UA



Connection with  
S2C-H6R  
S2C-S/H6R  
S3C-H6R  
S3C-H-S/H6R

