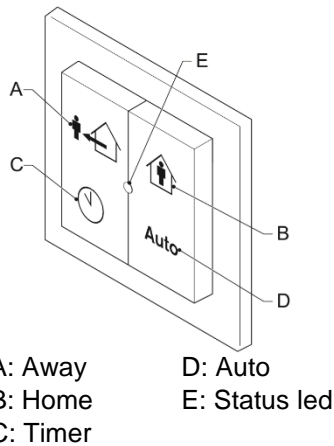


# Installation and operation instructions

## VMN-47LM54 - RF-Switch

### (3 modes + auto)



### 1. How to use this manual

This manual is intended as a reference book by which qualified installers can install the VMN-47LM54 (RF-Switch henceforth called “switch”) and users can use the switch for its intended purpose. Make sure you have read and understood the manual before you install and/or use the switch.

#### 1.1 Intended use

The switch is designed for the purpose to set the level of ventilation through the fan speed, based on user input. Every other or further use is not in conformance with the intended use.

#### 1.2 Working principle

The switch communicates with the control device using wireless communications, to control the ventilation. When you press a button, the switch sends this information to the ventilation system. The ventilation system processes this request and sends the resulting status back to the switch. The switch shows the resulting status on the LED. The ventilation system drives the fan based on the highest of values sent by the bound wireless sensor(s).

#### 1.2.1 Ventilation speeds and modes

The ventilation system runs in one of the following modes. In each of these modes, the switch sets the ventilation system to a configured level of ventilation.

Mode		Fan speed
Away		Low fan speed
Home		Medium fan speed
Timer		High fan speed, for a restricted duration
Auto	<b>AUTO</b>	Between low and high fan speed, based on measured values

The ventilation system drives the fan based on the highest of values sent by the bound wireless sensor(s).

You can start the timer mode from this switch for 30, 60 or 90 minutes.

### 1.3 Admonitions



'Warning' identifies a hazard that could lead to personal injury, including death.



'Note' is used to highlight additional information.

### 2. Content delivery

• RF-Switch (3 modes + auto) (VMN-47LM54)	1
• Battery	1
• Mounting screws	2
• Mounting plugs	2
• Manual	1

### 3. Safety

The switch meets the following EC directives:

• EMC directive:	2014/30/EC
• Low voltage directive:	2014/35/EU
• RTTE directive:	2014/53/EU
• RoHS directive:	2011/65/EU
• WEEE directive:	2012/19/EU

#### 3.1 Signs on the switch



CE-marking of conformity.



Dispose according to European Community Directive 2012/19/EU (WEEE).

#### General safety instructions

The switch is designed for indoor use only. Do not expose the switch to rain or moisture, to avoid short circuit. Short circuit may cause fire or electric shock hazard. Operate the switch between 0°C and 40°C. For cleaning of the switch use a soft damp cloth only. Never use any abrasive or chemical cleaner. Do not paint the switch.

### 4. Visual signals

		Status LED
Start up	Orange	1 flash
<b>Status</b>		
OK	Green	
Battery Low	Orange	1 flash
Fan error	Red	2 flashes
<b>Interaction response</b>		
Mode changed	Green	1 flash
Binding succeeded		2 flashes
Communication error	Red	1 flash

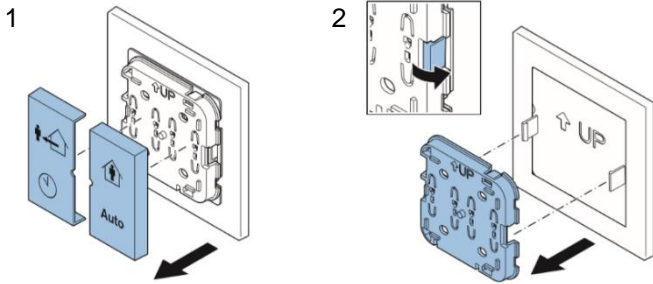
## 5. Installation

### 5.1 Preparation



Do not place the switch in a metal casing.

If not placed on a flush mounted wall box, prepare the wall.



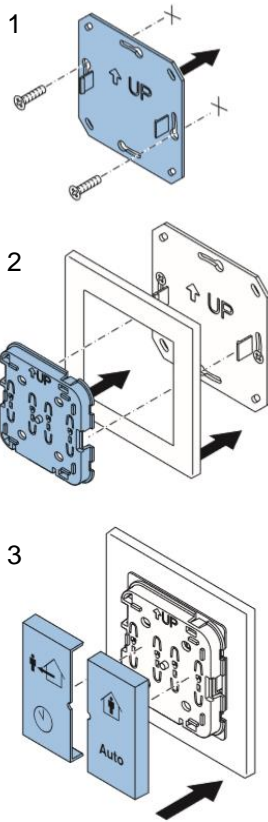
1. Remove the buttons from the device.
2. Loosen the clips and separate the unit from the mounting plate.
3. If using screws: prepare the wall, if needed. Use the mounting plate as a template.
4. If using tape:
  - a. Make sure the surface is smooth, clean, and degreased.
  - b. Remove the foil from the double-sided tape.



**Tip:** Connect the device to the system before you mount it on the wall.

### 5.2 Installation procedure

1. Place device / mounting plate.
  - a. If using screws: fasten the mounting plate using the screws.
  - b. If using tape: Stick the mounting plate on the wall.



2. Place the device on the mounting plate.

3. Place the buttons.

### 5.3 Commissioning

1. Make sure the device is in binding mode.
2. Press and hold the two upper or lower buttons. The device tries to bind to the control device. It shows the result on the status LED.

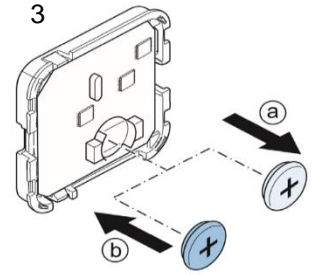
## 6. Operation

1. Press the required button
2. For timer button © C
  - Press 1x for 30 minutes.
  - Press 2x for 60 minutes.
  - Press 3x for 90 minutes.

## 7. Replacing the battery

(See section 5 for more visual instruction)

1. Remove the buttons from the device.
2. Loosen the clips and separate the unit from the mounting plate.
3. Replacing the battery:
  - a. Remove the old battery.
  - b. Place the new battery. The LED shortly shows orange.
4. Place the device on the mounting plate.
5. Place the buttons.



Never dispose of empty batteries in the household waste but bring them to the chemical waste collection points!



The switch will not work if the battery is inserted incorrectly. An incorrectly inserted battery can damage the electronics

!

## 8. Technical data

8.1	Dimensions	
	Main dimensions (h x w x d)	84 x 84 x 15 mm
	Weight	+/- 125 g
8.2	Ambient conditions	
	Operating Temperature Range	0 tot 40 °C
	Shipping & Storage Temperature Range	-20 tot 55°C
	Relative Humidity	0 - 90%, not condensing
	Ingress protection	IP30
8.3	Battery specification	
	Type	CR2032
	Battery lifetime	6 years
8.4	Wireless connection specifications	
	Communication frequency	868.3 MHz
	Output power	Minimal 0 dBm
		You are not allowed to use the device outside of Europe