

Data Sheet | Item Number: 790-124

Shield clamping saddle; 27 mm wide; diameter of compatible conductor; 6 ... 24 mm

<https://www.wago.com/790-124>



Color: ■ silver-colored

Notes

Safety information Cannot be used for connecting ground conductors!

Technical data

Safety information Cannot be used for connecting ground conductors!

Physical data

Width 27 mm / 1.063 inches

Material data

Color silver-colored
Fire load 0 MJ
Weight 21 g
Material Steel V2A
Stainless steel

Commercial data

Product Group 2 (Terminal Block Accessories)
eCl@ss 10.0 27-14-11-50
eCl@ss 9.0 27-14-11-50
ETIM 8.0 EC002020
ETIM 7.0 EC002020
PU (SPU) 50 (10) pcs
Packaging type Box
Country of origin DE
GTIN 4017332356961
Customs tariff number 85369010000

Environmental Product Compliance

RoHS Compliance Status Compliant, No Exemption

Downloads

Environmental Product Compliance

Compliance Search	
Environmental Product Compliance 790-124	↓

Documentation

Bid Text			
790-124	19.02.2019	xml 2.69 KB	↓
790-124	28.11.2018	doc 23.50 KB	↓

CAD/CAE-Data

CAD data	
2D/3D Models 790-124	↓

CAE data	
EPLAN Data Portal 790-124	↓
WSCAD Universe 790-124	↓
ZUKEN Portal 790-124	↓

1 Compatible Products

1.1 Optional Accessories

1.1.1 DIN-rail

1.1.1.1 Shield termination



Item No.: 790-145
 Carrier rail; with special perforations; 1000 mm long; tin-plated; silver-colored

1.1.2 Installation

1.1.2.1 Shield termination



Item No.: 790-100

Isolated mounting carrier; for busbar with screw M4 x 8 mm; gray



Item No.: 790-101

Isolated mounting carrier; for busbar with sheet metal screw (3.5 x 9) mm; gray

1.1.3 N-busbar

1.1.3.1 Mounting accessories



Item No.: 210-133

Busbar; tin-plated; 1000 mm long; Cu 10 mm x 3 mm; white



Item No.: 790-133

Busbar; tin-plated; 30 mm long; Cu 10 mm x 3 mm; silver-colored



Item No.: 790-134

Busbar; tin-plated; 50 mm long; Cu 10 mm x 3 mm; silver-colored

1.1.3.2 Shield termination



Item No.: 790-190

U-shaped busbar; Cu 10 mm x 3 mm; for 5 I/O; suitable for 750 Series I/O modules; silver-colored



Item No.: 790-192

U-shaped busbar; Cu 10 mm x 3 mm; for 5 I/O; suitable for 750 Series I/O modules; silver-colored



Item No.: 790-191

U-shaped busbar; Cu 10 mm x 3 mm; for 8 I/O; suitable for 750 Series I/O modules; silver-colored



Item No.: 790-193

U-shaped busbar; Cu 10 mm x 3 mm; for 8 I/O; suitable for 750 Series I/O modules; silver-colored

1.1.4 Shield termination

1.1.4.1 Shield termination



Item No.: 790-115

Carrier with 2 grounding feet; parallel to carrier rail; 125 mm long; Cu 10 mm x 3 mm; gray



Item No.: 790-113

Carrier with grounding foot; 90° to carrier rail; 45 mm long; Cu 10 mm x 3 mm; suitable for 790 Series shield clamping saddles; gray

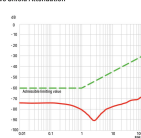


Item No.: 790-114

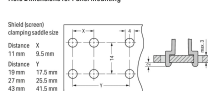
Carrier with grounding foot; parallel to carrier rail; 45 mm long; Cu 10 mm x 3 mm; suitable for 790 Series shield clamping saddles and 791 Series shield clamps; gray

Installation Notes

Negative Shield Attenuation



Hole Dimensions for Panel Mounting



WAGO's shield connection system is highly effective because the clamping unit can be brought very close to the unshielded part of the cable.

Additionally, the spring material is part of the clamping saddle, providing a good electrical connection (the system also acts as a partial strain relief). The spring element integrated in the shield clamping saddle compensates for deformation and settling that results from a connected shield.

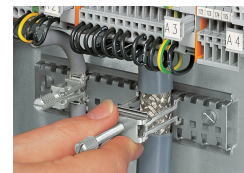
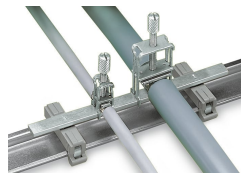
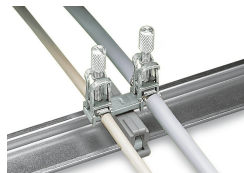
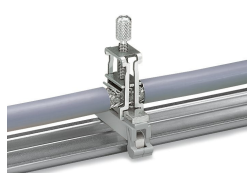


Installation

The shield clamping saddle is shipped ready for direct connection to the (10 x 3) mm busbar or to a drilled mounting plate. After connection, tighten the knurled screw to complete the installation. Maximum tightening torque: 0.5 Nm

Removal

To remove the clamping saddle, unscrew until ratcheted mechanism is released, then slightly tip saddle and remove the clamping saddle.

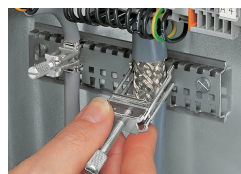
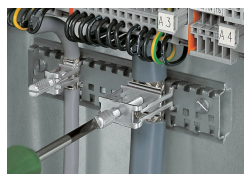
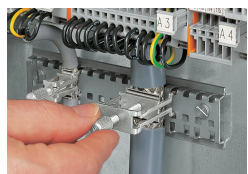


Carrier with grounding foot* (790-113), 45 mm long, busbar 90° to the DIN-rail
*for all shield clamping saddle sizes

Carrier with grounding foot* (790-114), 45 mm long, busbar parallel to the DIN-rail
*for all shield clamping saddle sizes

Carrier with grounding foot* (790-1145), 125 mm long, busbar parallel to the rail
*for all shield clamping saddle sizes

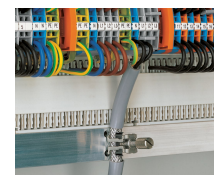
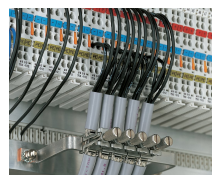
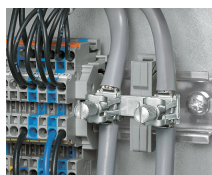
Securing an additional shield clamping saddle.



Tightening/removing a shield clamping saddle.

After connection, tighten the knurled screw to complete the installation. Recommended tightening torque: 0.5 Nm

To remove the clamping saddle, unscrew until ratcheted mechanism is released, then slightly tip saddle and remove the clamping saddle.



Carrier with grounding foot – busbar parallel to the rail

Insulated mounting carriers for a common shield reference potential, independent of housing potential

U-shaped (10 x 3) mm copper busbar

Snap shield clamping saddles into any metal plate (max. thickness: 3 mm).