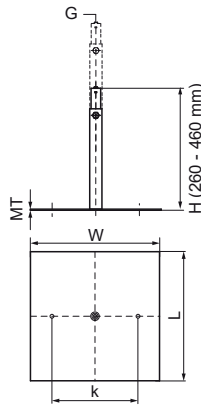
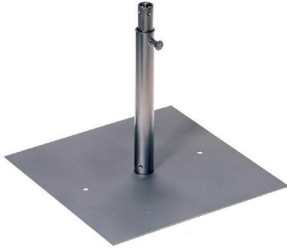


Walraven Supports for Spiral Duct

(F2505)

supports of spiral ducts



Features & benefits

- the spiral tube can be connected to the support by use of suspension band
- with height-adjustable stand with M8-connection (male thread)
- material: steel
- base plate pre-galvanized; stand zinc plated

| Product Number | Connection Thread | Total Length | Total Width | Total Height | Material Thickness | Heart To Heart Distance | Maximum Allowed Load Faz |
|------------------|-------------------|--------------|-------------|--------------|--------------------|-------------------------|--------------------------|
| Reference letter | G | L | W | H | MT | k | F _{0,z} |
| Unit description | | mm | mm | mm | mm | mm | N |
| 4125031 | M8 | 150 | 100 | 260 | 2.00 | 100 | 100 |