

## Data Sheet | Item Number: 790-108

Shield clamping saddle; 11 mm wide; diameter of compatible conductor; 3 ... 8 mm

<https://www.wago.com/790-108>



Color: ■ silver-colored

### Notes

Safety information	Cannot be used for connecting ground conductors!
--------------------	--

### Technical data

Safety information	Cannot be used for connecting ground conductors!
--------------------	--

### Physical data

Width	11 mm / 0.433 inches
-------	----------------------

### Material data

Color	silver-colored
Fire load	0 MJ
Weight	12 g
Material	Steel V2A Stainless steel

### Commercial data

Product Group	2 (Terminal Block Accessories)
eCl@ss 10.0	27-14-11-50
eCl@ss 9.0	27-14-11-50
ETIM 8.0	EC002020
ETIM 7.0	EC002020
PU (SPU)	50 (10) pcs
Packaging type	Box
Country of origin	DE
GTIN	4017332356954
Customs tariff number	85369010000

**Environmental Product Compliance**

RoHS Compliance Status Compliant, No Exemption

**Downloads**

**Environmental Product Compliance**

Compliance Search	
Environmental Product Compliance 790-108	<a href="#">↓</a>

**Documentation**

Bid Text			
790-108	19.02.2019	xml 2.68 KB	<a href="#">↓</a>
790-108	28.11.2018	doc 23.50 KB	<a href="#">↓</a>

**CAD/CAE-Data**

CAD data	
2D/3D Models 790-108	<a href="#">↓</a>

CAE data	
EPLAN Data Portal 790-108	<a href="#">↓</a>
WSCAD Universe 790-108	<a href="#">↓</a>
ZUKEN Portal 790-108	<a href="#">↓</a>

**1 Compatible Products**

**1.1 Optional Accessories**

**1.1.1 DIN-rail**

**1.1.1.1 Shield termination**



**Item No.: 790-145**  
 Carrier rail; with special perforations; 1000 mm long; tin-plated; silver-colored

## 1.1.2 Installation

### 1.1.2.1 Shield termination



**Item No.: 790-100**

Isolated mounting carrier; for busbar with screw M4 x 8 mm; gray



**Item No.: 790-101**

Isolated mounting carrier; for busbar with sheet metal screw (3.5 x 9) mm; gray

## 1.1.3 N-busbar

### 1.1.3.1 Mounting accessories



**Item No.: 210-133**

Busbar; tin-plated; 1000 mm long; Cu 10 mm x 3 mm; white



**Item No.: 790-133**

Busbar; tin-plated; 30 mm long; Cu 10 mm x 3 mm; silver-colored



**Item No.: 790-134**

Busbar; tin-plated; 50 mm long; Cu 10 mm x 3 mm; silver-colored

### 1.1.3.2 Shield termination



**Item No.: 790-190**

U-shaped busbar; Cu 10 mm x 3 mm; for 5 I/O; suitable for 750 Series I/O modules; silver-colored



**Item No.: 790-192**

U-shaped busbar; Cu 10 mm x 3 mm; for 5 I/O; suitable for 750 Series I/O modules; silver-colored



**Item No.: 790-191**

U-shaped busbar; Cu 10 mm x 3 mm; for 8 I/O; suitable for 750 Series I/O modules; silver-colored



**Item No.: 790-193**

U-shaped busbar; Cu 10 mm x 3 mm; for 8 I/O; suitable for 750 Series I/O modules; silver-colored

## 1.1.4 Shield termination

### 1.1.4.1 Shield termination



**Item No.: 790-115**

Carrier with 2 grounding feet; parallel to carrier rail; 125 mm long; Cu 10 mm x 3 mm; gray



**Item No.: 790-113**

Carrier with grounding foot; 90° to carrier rail; 45 mm long; Cu 10 mm x 3 mm; suitable for 790 Series shield clamping saddles; gray



**Item No.: 790-110**

Carrier with grounding foot; parallel to carrier rail; 15 mm long; Cu 10 mm x 3 mm; suitable for 790-108 shield clamping saddles; gray



**Item No.: 790-112**

Carrier with grounding foot; parallel to carrier rail; 25 mm long; Cu 10 mm x 3 mm; suitable for 790-108 and 790-116; gray



**Item No.: 790-114**

Carrier with grounding foot; parallel to carrier rail; 45 mm long; Cu 10 mm x 3 mm; suitable for 790 Series shield clamping saddles and 791 Series shield clamps; gray

## Installation Notes

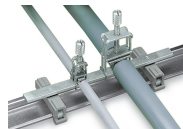
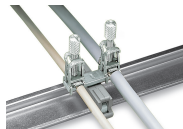


**Installation**

The shield clamping saddle is shipped ready for direct connection to the (10 x 3) mm busbar or to a drilled mounting plate. After connection, tighten the knurled screw to complete the installation. Maximum tightening torque: 0.5 Nm

**Removal**

To remove the clamping saddle, unscrew until ratcheted mechanism is released, then slightly tip saddle and remove the clamping saddle.



Carrier with grounding foot\* (790-113), 45 mm long, busbar 90° to the DIN-rail  
\*for all shield clamping saddle sizes

Carrier with grounding foot\* (790-114), 45 mm long, busbar parallel to the DIN-rail  
\*for all shield clamping saddle sizes

Carrier with grounding foot\* (790-1145), 125 mm long, busbar parallel to the rail  
\*for all shield clamping saddle sizes

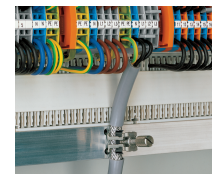
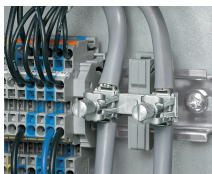
Securing an additional shield clamping saddle.



Tightening/removing a shield clamping saddle.

After connection, tighten the knurled screw to complete the installation. Recommended tightening torque: 0.5 Nm

To remove the clamping saddle, unscrew until ratcheted mechanism is released, then slightly tip saddle and remove the clamping saddle.



Carrier with grounding foot – busbar parallel to the rail

Insulated mounting carriers for a common shield reference potential, independent of housing potential

U-shaped (10 x 3) mm copper busbar

Snap shield clamping saddles into any metal plate (max. thickness: 3 mm).