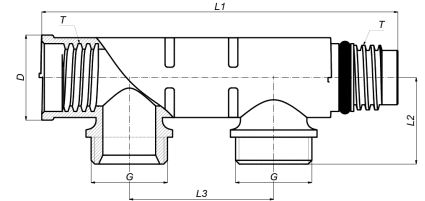


VSKEK-0502: Extension or body for manifold, 2 eurocone connections 2x3/4"



Commercial information

Full Flow Manifold the universal synthetic distributor with 2 to 12 outputs (and more).

Advantages:

- A separate pipe circuit for each tap point; connections in the floor can thus be avoided.
- Multifunctional and modular.
- 100 % corrosion-free.
- Maximum amount of connections in very short construction length.
- Improves the balance in a system.
- Cost-effective solution.
- Fixing materials available.
- KIWA, KOMO and ATG approved.
- Suitable for both press and push-fit applications.
- Can be fitted with a 3/8" air vent (matching article 18EK-0503).
- Various group connections in 3/4" eurocone possible.

Connections: Push-fit, Press PVDF, Press brass, Ball valve for C/H applications, Manifold: Henco dimensions internal thread x external thread, Groups: Eurocone 3/4".

Supply diameters: 20mm and 26mm.

Basic unit dimensions

Height	30 mm
Length	124 mm
Width	45 mm
Net weight	0.070 kg

Certificates

QB (CSTBat), ETA, KIWA, ÖVGW Wasser, SINTEF, SITAC, KOMO, STF, GOST-R, TSU, EMI

Applications

Potable water, Heating, Cooling, Sanitary

Solutions

Building installations, Industry, Utility

Technical characteristics

Suitable for tap water	✓	Outer pipe diameter connection 1	16 Millimetre
Suitable for central heating water	✓	Number of branches	2
Suitable for cooling water	✓	Number of branching directions	1
Suitable for compressed air	✗	Distance between offset	50 Millimetre
Suitable for glycol	✓	Max. medium temperature (continuous)	70 Degrees celsius
Mounting method	Surface mounting	Width	45 Millimetre
Model	Distributor/collector	Height	30 Millimetre
Material	Plastic	Length distributor	124 Millimetre
Material quality	Polyvinylidene fluoride (PVDF)		
Surface protection	Untreated		
Shape	Throughflow with straight branches		
Connection 1	Internal thread cylindrical BSPP-G (ISO 228-1)		
Nominal diameter connection 2	3/4 inch (20)		
Connection 2	External thread cylindrical BSPP-G (ISO 228-1)		
Nominal diameter branches	3/4 inch (20)		
Connection branches	Euroconus (expired)		
Deviant distance between branches	✗		
With filling/drain tap	✗		
System specific	✓		
With shut-off valve	✗		
With de-aeration	✗		
With wall-mounting bracket	✗		
With mounting material	✗		
With legs	✗		