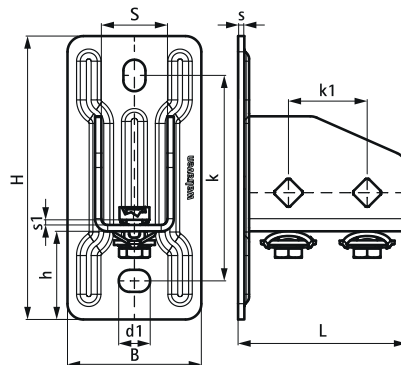


Walraven RapidStrut® Stainless Steel Base Plate G2

(M5105)

base foot to connect fixing rails



Features & benefits

- flexible base plate for Walraven RapidStrut® rails
- suitable for all Walraven RapidStrut® rail up to 82mm height
- open side of rails 41x41 can be turned to all sides
- at high loads we advise to install with throughbolts
- timesaving with pre-assembled fasteners
- material: stainless steel 1.4401/1.4404 (A4) - EN10088, AISI 316/316L; spring(s) made of of POM (polyoxymethylene), blue (according to RAL 5015)



Product Number	For Rail Type	Total Width x Total Height x Total Length	Width	Height	Length	Heart To Heart Distance	Anchoring Slot	Fixing Hole	Material Thickness	Material Thick- ness 2	Maximum Allowed Load Faz
Reference letter		$W \times H \times L$	w	h	l	k	AS	FH	MT	MT 2	$F_{a,z}$
Unit description		$mm \times mm \times mm$	mm	mm	mm	mm	mm	mm	mm	mm	N
665875400	41x21, 41x41	85 x 180 x 107	50	73	100	130.5	20x14	13.8	4.00	4	3,636