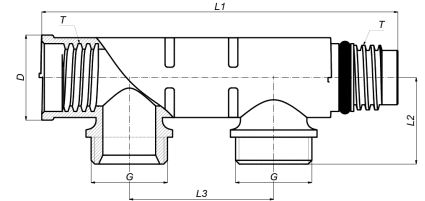


## VSKEK-0502: Extension or body for manifold, 2 eurocone connections 2x3/4"



### Commercial information

Full Flow Manifold the universal synthetic distributor with 2 to 12 outputs (and more).

Advantages:

- A separate pipe circuit for each tap point; connections in the floor can thus be avoided.
- Multifunctional and modular.
- 100 % corrosion-free.
- Maximum amount of connections in very short construction length.
- Improves the balance in a system.
- Cost-effective solution.
- Fixing materials available.
- KIWA, KOMO and ATG approved.
- Suitable for both press and push-fit applications.
- Can be fitted with a 3/8" air vent (matching article 18EK-0503).
- Various group connections in 3/4" eurocone possible.

Connections: Push-fit, Press PVDF, Press brass, Ball valve for C/H applications, Manifold: Henco dimensions internal thread x external thread, Groups: Eurocone 3/4".

Supply diameters: 20mm and 26mm.

#### Basic unit dimensions

Height	30 mm
Length	124 mm
Width	45 mm
Net weight	0.070 kg

#### Certificates

QB (CSTBat), ETA, KIWA, ÖVGW Wasser, SINTEF, SITAC, KOMO, STF, GOST-R, TSU, EMI

#### Applications

Potable water, Heating, Cooling, Sanitary

#### Solutions

Building installations, Industry, Utility

## Technical characteristics

Suitable for tap water	✓	Outer pipe diameter connection 1	16 Millimetre
Suitable for central heating water	✓	Number of branches	2
Suitable for cooling water	✓	Number of branching directions	1
Suitable for compressed air	✗	Distance between offset	50 Millimetre
Suitable for glycol	✓	Max. medium temperature (continuous)	70 Degrees celsius
Mounting method	Surface mounting	Width	45 Millimetre
Model	Distributor/collector	Height	30 Millimetre
Material	Plastic	Length distributor	124 Millimetre
Material quality	Polyvinylidene fluoride (PVDF)		
Surface protection	Untreated		
Shape	Throughflow with straight branches		
Connection 1	Internal thread cylindrical BSPP-G (ISO 228-1)		
Nominal diameter connection 2	3/4 inch (20)		
Connection 2	External thread cylindrical BSPP-G (ISO 228-1)		
Nominal diameter branches	3/4 inch (20)		
Connection branches	Euroconus (expired)		
Deviant distance between branches	✗		
With filling/drain tap	✗		
System specific	✓		
With shut-off valve	✗		
With de-aeration	✗		
With wall-mounting bracket	✗		
With mounting material	✗		
With legs	✗		