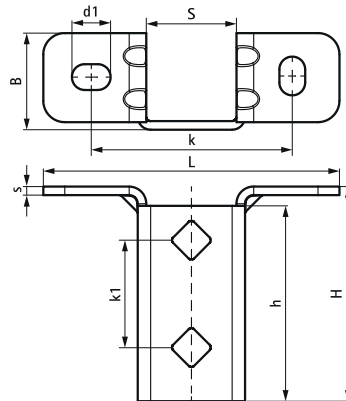


## Walraven RapidStrut® T-shape Base Plate (BUP1000)

(H1212)

light base foot to connect fixing rails



### Features & benefits

- highly flexible base plate for Walraven RapidStrut® rails
- open side of the rail can be turned to all sides
- extra safety by reinforced bending
- hole pattern is adapted to the hole pattern of Walraven RapidStrut® rails
- material: steel 1.0242 (S250GD) + ZM310 MAC
- product is part of the Walraven Walraven UltraProtect® 1000 system
- suitable for in- and outdoor applications
- stands min. 1,000 hours salt spray test (max. 5% red rust) according to ISO 9227

Product Number	For Rail Type	Total Width x Total Height x Total Length	Width	Height	Length	Heart To Heart Distance	Anchoring Slot	Fixing Hole	Material Thickness 2	Maximum Allowed Load Faz
Reference letter		$W \times H \times L$	$w$	$h$	$l$	$k$	AS	FH	MT 2	$F_{a,z}$
Unit description		$mm \times mm \times mm$	$mm$	$mm$	$mm$	$mm$	$mm$	$mm$	$mm$	$N$
66588361	41x21, 41x41, 41x51, 41x62, 41x82	45 x 100 x 138	4,150	91	42	50	18x12	1,380	0	3,636