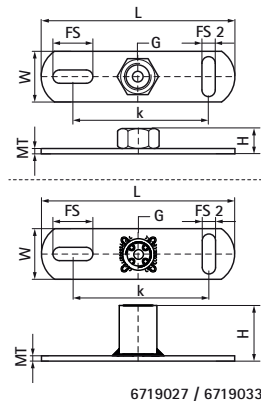


Walraven Wall Plate CO₂ Welded

(K1512)

fixing to wall or ceiling



Features & benefits

- fixings to wall, ceiling or floor (tension and bending loads allowed)
- slots at 90° to each other to simplify fixing
- with CO₂ welded connection nut
- material: steel
- zinc plated

Product Number	VVS Number	Connection Thread	Total Length	Total Width	Total Height	Material Thickness	Fixing Slot	Fixing Slot 2	Heart To Heart Distance	Maximum Allowed Load Faz
Reference letter		G	L	W	H	MT	FS	FS 2	k	Fa,z
Unit description			mm	mm	mm	mm	mm	mm	mm	N
6719012		M12	145	38	17	4.00	30x11	25x11	100	6,000
6719016	018045636	M16	145	38	20	4.00	30x11	25x11	100	6,000
6719021	018045644	G1/2"	145	38	22	4.00	30x11	25x11	100	4,000
6719027	018045646	G3/4"	145	38	27	4.00	30x11	25x11	100	5,000
6719033	018045648	G1"	145	38	27	4.00	30x11	25x11	100	5,500