

36 120 809 Product version from 3/13/2017 to 2/20/2020



- automatic diverter
- cover plate Ø 150 mm
- WRAS

	Platinum	36 120 809-08
	Chrome	36 120 809-00
	Brushed Platinum	36 120 809-06
	Dark Chrome	36 120 809-19
	Brushed Durabronze (23kt Gold)	36 120 809-28
	Brushed Gold (PVD)	36 120 809-37
	Brushed Dark Brass (PVD)	36 120 809-39
	Brushed Bronze (PVD)	36 120 809-42
	Brushed Dark Bronze (PVD)	36 120 809-43
	Brushed Champagne (22kt Gold)	36 120 809-46
	Champagne (22kt Gold)	36 120 809-47
	Brushed Dark Platinum	36 120 809-99

**Required miscellaneous**

**xGRID Installation track 555 mm - 12 360 970 90**



**Required miscellaneous**

**Concealed single-lever mixer with backflow preventor - 35 021 970 90**  
 •min. recess depth 80 mm  
 •max. recess depth 105 mm



**Required miscellaneous**

**Concealed single-lever mixer - 35 020 970 90**  
 •min. recess depth 80 mm  
 •max. recess depth 105 mm



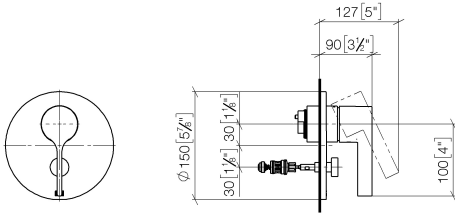
**Recommended miscellaneous**

**xGRID Attachment set for integrating in the dry wall construction - 12 340 970 90**

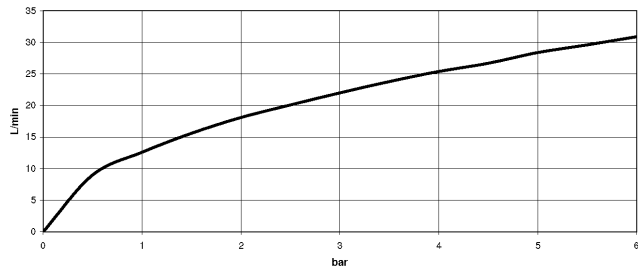


36 120 809 Product version from 3/13/2017 to 2/20/2020

mm [inches]



Flow rate chart



Codes & Standards

DIN 4109

ISO 3822

Scottish Water  
Byelaws

UK Water Supply  
Regulations

Ü-Zeichen



## VAIA Concealed single-lever mixer with diverter - Platinum

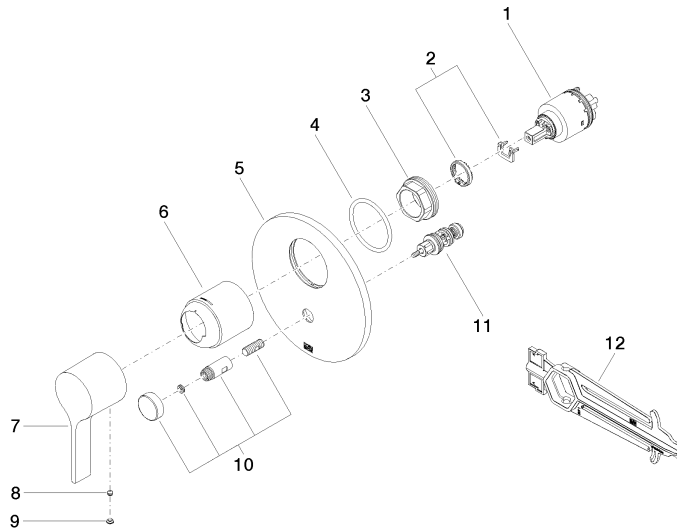
VAIA

36 120 809 Product version from 3/13/2017 to 2/20/2020

### Certificates and sustainability

LGA_19	WRAS_2207	EPD-DOR-20230287 -IBA1-EN Environmental.prod uct-declarat
--------	-----------	--------------------------------------------------------------------

36 120 809 Product version from 3/13/2017 to 2/20/2020



## Spare parts list

No.	Item Number	Name	Quantity used	Delivery time
6	09 11 02 260-08	Cover Ø 50 x 58 mm - Platinum	1.00	54
1	90 15 05 038 00 90	Single-lever mixer cartridge -	1.00	-
Spare part can no longer be ordered, please order the replacement item				
	9015050390090	Cartridge blue Ø 40 x 75 mm -		
12	90 30 09 064 00 90	Spanner for cartridge nut -	1.00	14
10	90 31 09 139 00-08	Pull rod for diverter with button Ø 26 x 47,3 mm - Platinum	1.00	54
5	09 11 02 261-08	Rosette for bath Ø 150 x 9 mm - Platinum	1.00	54
4	09 14 10 084 90	O-Ring EPDM 70 48 x 3,5 mm -	1.00	14
3	09 24 04 448 90	Mounting Nut Ø 42 x 17 mm -	1.00	14
9	90 31 20 087 00-08	Plug with O-ring Ø 7 x 2,1 mm - Platinum	1.00	54
11	90 21 34 081 00 90	Diverter 98 x 64 x 64 mm -	1.00	14
2	04 28 10 149 00 90	Single-lever mixer cartridge -	1.00	14
8	90 31 11 063 00 90	Mounting Threaded pin with hexagon socket with cup point M5 x 4 mm -	1.00	14
7	90 20 80 074 00-08	handle	1.00	-
Spare part can no longer be ordered, please order the replacement item				