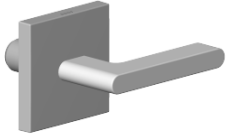


**Handle for bath Cold Lever 60 x 60 x 40 mm - Brushed Champagne (22kt Gold)**

**SPARE PARTS**

90 20 70 057 01 Product version from 11/23/2020



	Brushed Champagne (22kt Gold)	90 20 70 057 01-46
	Chrome	90 20 70 057 01-00
	Brushed Platinum	90 20 70 057 01-06
	Brushed Light Gold (PVD)	90 20 70 057 01-27
	Brushed Durabrass (23kt Gold)	90 20 70 057 01-28
	Brushed Gold (PVD)	90 20 70 057 01-37
	Brushed Bronze (PVD)	90 20 70 057 01-42
	Champagne (22kt Gold)	90 20 70 057 01-47
	Brushed Dark Platinum	90 20 70 057 01-99



Handle for bath Cold Lever 60 x 60 x 40 mm - Brushed Champagne (22kt Gold) SPARE PARTS

---

90 20 70 057 01 Product version from 11/23/2020



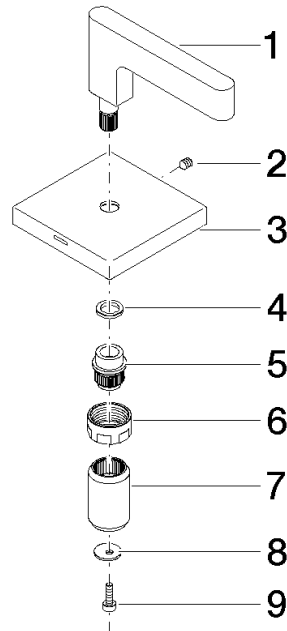
Handle for bath Cold Lever 60 x 60 x 40 mm - Brushed Champagne (22kt Gold) SPARE PARTS

---

90 20 70 057 01 Product version from 11/23/2020

90 20 70 057 01 Product version from 11/23/2020

Parts for other finishes can be found here: [Chrome](#)



## Spare parts list

No.	Item Number	Name	Quantity used	Delivery time
9	09 30 30 167 90	Mounting Cylinder head screw with hexagon socket M3 x 10 mm -	1.00	14
4	09 14 03 187 90	Ring -	1.00	14
1	09 20 70 057-46	handle	1.00	82
6	09 23 30 074 90	Mounting Nut M16 x 1 -	1.00	14
7	09 12 12 058 90	Sleeve Ø 18 x 29 mm -	1.00	14
5	09 12 12 057 90	Fixing cap white Ø 15 x 17 mm -	1.00	14
3	09 27 78 045-46	rosette	1.00	40
8	09 30 11 193 90	Disc with tothing Ø 12 x 1 mm -	1.00	14
2	90 31 11 007 00 90	Mounting Threaded pin with hexagon socket M4 x 6 mm -	1.00	14