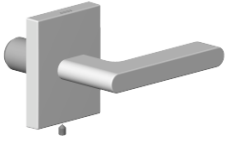


Handle for basin Cold Lever 60 x 47,5 x 40 mm - Brushed Champagne (22kt Gold)

SPARE PARTS

90 20 70 057 03 Product version from 11/23/2020



	Brushed Champagne (22kt Gold)	90 20 70 057 03-46
	Chrome	90 20 70 057 03-00
	Brushed Platinum	90 20 70 057 03-06
	Dark Chrome	90 20 70 057 03-19
	Brushed Light Gold (PVD)	90 20 70 057 03-27
	Brushed Durabrass (23kt Gold)	90 20 70 057 03-28
	Brushed Gold (PVD)	90 20 70 057 03-37
	Brushed Bronze (PVD)	90 20 70 057 03-42
	Champagne (22kt Gold)	90 20 70 057 03-47
	Brushed Dark Platinum	90 20 70 057 03-99



Handle for basin Cold Lever 60 x 47,5 x 40 mm - Brushed Champagne (22kt Gold)

SPARE PARTS

90 20 70 057 03 Product version from 11/23/2020



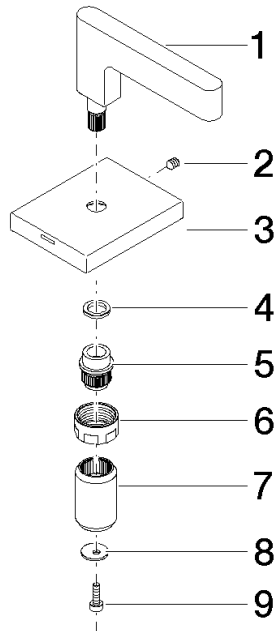
Handle for basin Cold Lever 60 x 47,5 x 40 mm - Brushed Champagne (22kt Gold)

SPARE PARTS

90 20 70 057 03 Product version from 11/23/2020

90 20 70 057 03 Product version from 11/23/2020

Parts for other finishes can be found here: [Chrome](#)



Spare parts list

No.	Item Number	Name	Quantity used	Delivery time
5	09 12 12 057 90	Fixing cap white Ø 15 x 17 mm -	1.00	14
2	90 31 11 007 00 90	Mounting Threaded pin with hexagon socket M4 x 6 mm	1.00	14
9	09 30 30 167 90	Mounting Cylinder head screw with hexagon socket M3 x 10 mm -	1.00	14
8	09 30 11 193 90	Disc with tothing Ø 12 x 1 mm -	1.00	14
7	09 12 12 058 90	Sleeve Ø 18 x 29 mm -	1.00	14
6	09 23 30 074 90	Mounting Nut M16 x 1 -	1.00	14
3	09 27 70 001-46	rosette	1.00	82
1	09 20 70 057-46	handle	1.00	82
4	09 14 03 187 90	Ring -	1.00	14