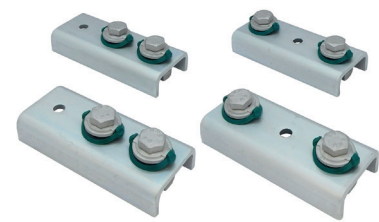


Walraven Wall Mounting ISO Kit

(H1930)

universal Mounting Set for outdoor appliances



Features & benefits

- fixing kit for heat pumps with inner thread connections on the underside of the unit
- to fix heat pumps with inner thread connections to Walraven Wall Mounting Sets Type 62|H (6901975 / 6901990)
- please carefully read the assembly instructions of both fixing Kit (6901998) as well as Wall Mounting Set Type 62|H (6901975 / 6901990)
- material: steel 1.0332
- surface protection:- product is part of the Walraven BIS UltraProtect® 1000 system- suitable for in- and outdoor applications- stands min. 1,000 hours salt spray test (max. 5% red rust) according to ISO 9227
- set consists of:- 2 U-shaped brackets with pre-assembled fasteners and 1 open hole at the end- 2 U-shaped brackets with pre-assembled fasteners and 1 open hole in the middle- assembly instruction

Product Number	Total Width x Total Height x Total Length	Material Thickness	Width	Fixing Hole	Heart To Heart Distance
Reference letter	W x H x L	MT	w	FH	k
Unit description	mm x mm x mm	mm	mm	mm	mm
6901998	52 x 37.7 x 122	5.00	42	13.8	41