

MADISON Angle valve - Durabronz (23kt Gold)

MADISON

22 900 361 Product version up to 5/1/2024

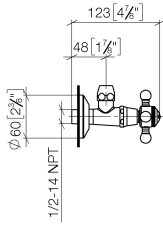
- rosette Ø 60 mm
- porcelain insert HOT



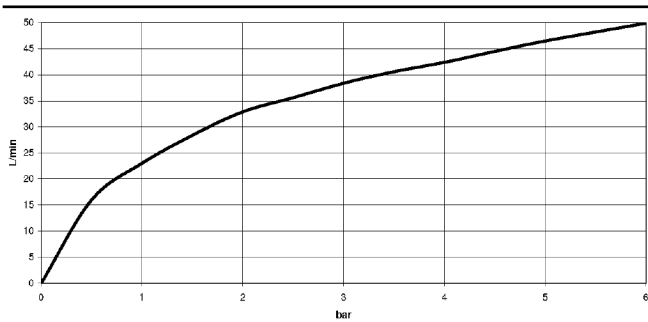
	Durabronz (23kt Gold)	22 900 361-09
	Chrome	22 900 361-00
	Brushed Platinum	22 900 361-06
	Platinum	22 900 361-08
	Brushed Durabronz (23kt Gold)	22 900 361-28
	Brushed Gold (PVD)	22 900 361-37
	Brushed Dark Brass (PVD)	22 900 361-39
	Brushed Bronze (PVD)	22 900 361-42
	Brushed Dark Bronze (PVD)	22 900 361-43
	Brushed Dark Platinum	22 900 361-99

22 900 361 Product version up to 5/1/2024

mm [inches]

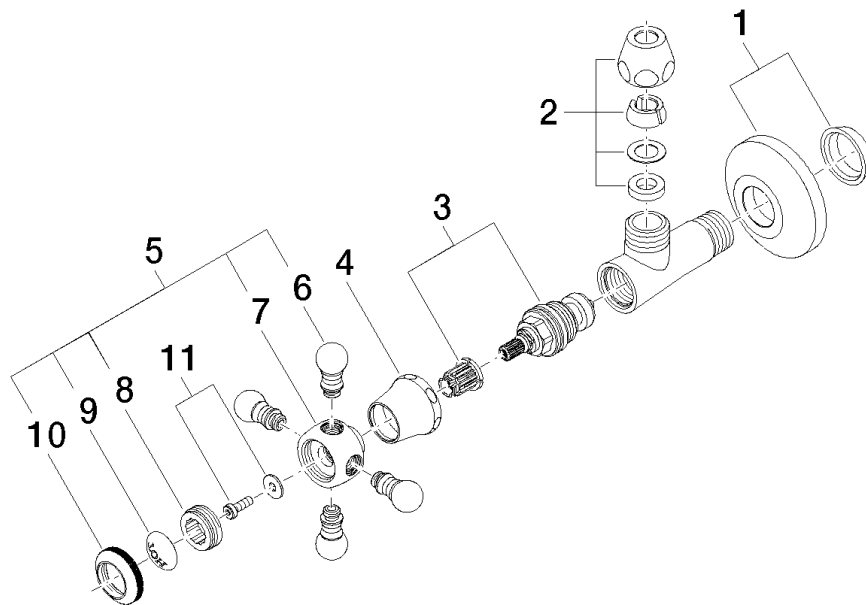


Flow rate chart



22 900 361 Product version up to 5/1/2024

Parts for other finishes can be found here: Chrome



Spare parts list

No.	Item Number	Name	Quantity used	Delivery time
4	09 21 02 055-09	Cover 24 x 29 x 30 mm - Durabron (23kt Gold)	1.00	54
10	09 20 36 005-09	Handle Ø 28 x 7 mm - Durabron (23kt Gold)	1.00	54
9	09 26 01 011 90	Cover Porcelain insert plate HOT -	1.00	14
5	04 20 36 002 07-09	Handle Hot - Durabron (23kt Gold)	1.00	54
11	04 30 30 029 00 90	Mounting theft-proof -	1.00	14
7	09 20 36 002-09	Handle Ø 29,5 x 30 mm - Durabron (23kt Gold)	1.00	54
3	90 90 03 023 01 90	Head part Grease chamber 1/2" -	1.00	14
2	90 23 30 040 00-09	Union piece - Durabron (23kt Gold)	1.00	54
8	09 20 83 006 90	Handle Ø 21 x 7,5 mm -	1.00	14
6	09 20 36 004-09	Handle 15 x 15 x 28 mm - Durabron (23kt Gold)	4.00	54
1	04 27 01 003 00-09	Rosette Ø 60 x 15 mm - Durabron (23kt Gold)	1.00	54