

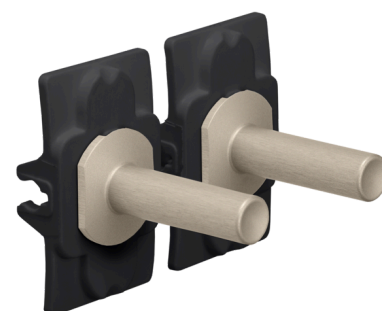
Niko Toggle set for double switch functions, steel champagne coated

166-57002



The Niko Toggle set contains a left and a right Toggle part. The left part clicks onto the left switch function. The right part clicks onto the right switch function. Click both Toggle parts onto the function before you click the Niko Toggle faceplate into place.

The Niko Toggle set consist of a click connector made out of high grade, durable plastic that permanently fixes the two levers. The levers are made of aluminium.



- Exclusive materials
- Metal controls
- Authentic vintage design
- Belgian design & craftsmanship
- Proven Niko quality
- Unique illuminated switch design (by adding feedback LED)

Technical data

Niko Toggle set for double switch functions, steel champagne coated.

- Material finishing: aluminium
- Type of control: switch or push button
- Colour: steel champagne coated
- Colour RAL (approximately): 080 70 10
- Colour NCS (approximately): NCS S 4005-Y20R
- Surface treatment: coated
- Number of lenses: 0
- Dimensions (HxWxD): 26.8 mm x 16.9 mm x 28.4 mm
- Certification marks: CEBEC, NF
- Marking: CE