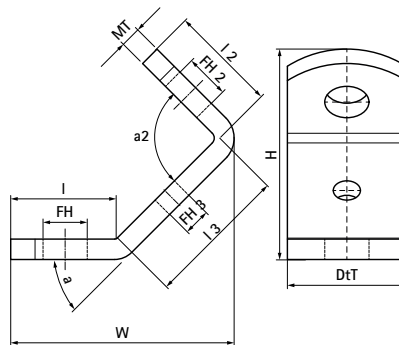


# Walraven Threaded Rod Support

(E0560)

for diagonal ties 45 deg



## Features & benefits

- for strengthening rail constructions with the aid of threaded rods
- also suitable for bracing cantilever arms
- material: steel 1.0332
- zinc plated
- max. allowed load ( $F_{a,z}$ ) under an angle of 45°

Product Number	Length	Length 2	Length 3	Material Thickness	Fixing Hole	Fixing Hole 2	Fixing Hole 3	Angle	Angle 2	Total Width x Total Height x Total Depth	Maximum Allowed Load $F_{a,z}$
Reference letter	L	L2	L3	MT	FH	FH2	FH3	a	a2	W x H x DtT	$F_{a,z}$
Unit description	mm	mm	mm	mm	mm	mm	mm	°	°	mm x mm x mm	N
6698013	31	31	42	6.00	13	13	8	45	90	74 x 63 x 35	3,000