

Handle 60 x 60 x 55 mm - Brushed Light Gold

SPARE PARTS

90 20 78 002 01



	Brushed Light Gold	90 20 78 002 01-27
	Chrome	90 20 78 002 01-00
	Brushed Platinum	90 20 78 002 01-06
	Platinum	90 20 78 002 01-08
	Brushed Durabronze (23kt Gold)	90 20 78 002 01-28
	Brushed Dark Brass (PVD)	90 20 78 002 01-39
	Brushed Bronze (PVD)	90 20 78 002 01-42
	Brushed Champagne (22kt Gold)	90 20 78 002 01-46
	Champagne (22kt Gold)	90 20 78 002 01-47
	Cyprus	90 20 78 002 01-49
	Brushed Chrome	90 20 78 002 01-93
	Brushed Dark Platinum	90 20 78 002 01-99



Handle 60 x 60 x 55 mm - Brushed Light Gold

SPARE PARTS

---

90 20 78 002 01



Handle 60 x 60 x 55 mm - Brushed Light Gold

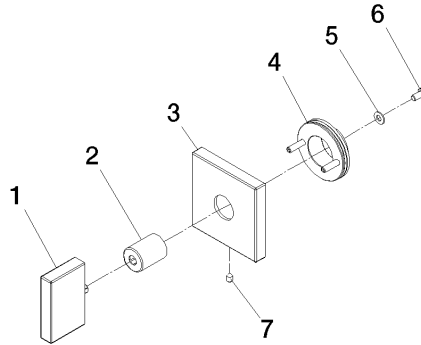
SPARE PARTS

---

90 20 78 002 01

90 20 78 002 01

Parts for other finishes can be found here: [Chrome](#)



### Spare parts list

No.	Item Number	Name	Quantity used	Delivery time
2	90 12 12 042 00-27	Handle mount MEM Special type - Brushed Light Gold (PVD)	1.00	40
1	90 20 78 008 00-27	Handle MEM - Brushed Light Gold (PVD)	1.00	40
3	90 27 78 044 00-27	Rosette MEM - Brushed Light Gold (PVD)	1.00	40
5	90 30 11 047 00 90	Disc -	1.00	14
6	09 30 30 057 90	Mounting Cylinder head screw with hexagon socket with low profile M4 x 8 mm -	1.00	14
4	90 21 02 108 00 90	Wall disc complete -	1.00	14
7	90 31 11 007 00 90	Mounting Threaded pin with hexagon socket M4 x 6 mm	1.00	14