

90 20 78 002 01



| | | |
|---|-------------------------------------|--------------------|
|  | Brushed Chrome | 90 20 78 002 01-93 |
|  | Chrome | 90 20 78 002 01-00 |
|  | Brushed Platinum | 90 20 78 002 01-06 |
|  | Platinum | 90 20 78 002 01-08 |
|  | Brushed Light Gold | 90 20 78 002 01-27 |
|  | Brushed Durabronze (23kt Gold) | 90 20 78 002 01-28 |
|  | Brushed Dark Brass (PVD) | 90 20 78 002 01-39 |
|  | Brushed Bronze (PVD) | 90 20 78 002 01-42 |
|  | Brushed Champagne (22kt Gold) | 90 20 78 002 01-46 |
|  | Champagne (22kt Gold) | 90 20 78 002 01-47 |
|  | Cyprus | 90 20 78 002 01-49 |
|  | Brushed Dark Platinum | 90 20 78 002 01-99 |



Handle 60 x 60 x 55 mm - Brushed Chrome

SPARE PARTS

90 20 78 002 01



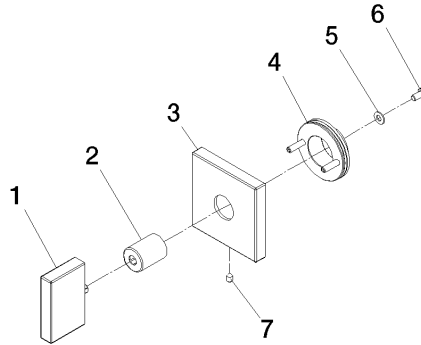
Handle 60 x 60 x 55 mm - Brushed Chrome

SPARE PARTS

90 20 78 002 01

90 20 78 002 01

Parts for other finishes can be found here: [Chrome](#)



Spare parts list

| No. | Item Number | Name | Quantity used | Delivery time |
|-----|--------------------|---|---------------|---------------|
| 5 | 90 30 11 047 00 90 | Disc - | 1.00 | 14 |
| 2 | 90 12 12 042 00-93 | Handle mount MEM Special type - Brushed Chrome | 1.00 | 40 |
| 6 | 09 30 30 057 90 | Mounting Cylinder head screw with hexagon socket with low profile M4 x 8 mm - | 1.00 | 14 |
| 1 | 90 20 78 008 00-93 | Handle MEM - Brushed Chrome | 1.00 | 40 |
| 3 | 90 27 78 044 00-93 | Rosette MEM - Brushed Chrome | 1.00 | 40 |
| 4 | 90 21 02 108 00 90 | Wall disc complete - | 1.00 | 14 |
| 7 | 90 31 11 007 00 90 | Mounting Threaded pin with hexagon socket M4 x 6 mm - | 1.00 | 14 |