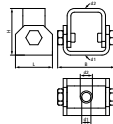
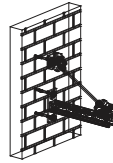
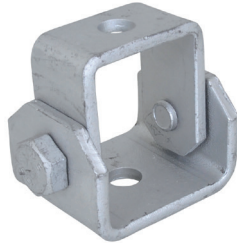


Walraven Adjustable Support (BUP1000)

(H1253)

for suspensions and bracing



Features & benefits

- especially for angled installations with bracings
- suitable for fixing to walls or fixing rails
- adjustable angle up to 90°
- with two holes Ø13 mm
- material: steel
- product is part of the Walraven Walraven UltraProtect® 1000 system
- suitable for in- and outdoor applications
- stands min. 1,000 hours salt spray test (max. 5% red rust) according to ISO 9227
- Max. allowed load: when used at an angle of 45° on wall/ceiling.



Product Number	For Rail Type	Total Width x Total Height x Total Length	Material Thickness	Width	Fixing Hole	Maximum Allowed Load Faz
<i>Reference letter</i>		<i>W x H x L</i>	<i>MT</i>	<i>w</i>	<i>FH</i>	<i>Fa,z</i>
<i>Unit description</i>		<i>mm x mm x mm</i>	<i>mm</i>	<i>mm</i>	<i>mm</i>	<i>N</i>
66588818	41x21, 41x41, 41x51, 41x62, 41x82	50 x 63 x 77.5	5.00	50	12.4	5,000