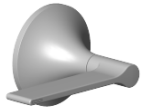










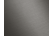


**Handle for side valve Cold Lever 113 x 68 x 60 mm - Brushed Light Gold (PVD) SPARE PARTS**

90 20 80 012 00



	Brushed Light Gold (PVD)	90 20 80 012 00-27
	Chrome	90 20 80 012 00-00
	Brushed Platinum	90 20 80 012 00-06
	Platinum	90 20 80 012 00-08
	Durabronze (23kt Gold)	90 20 80 012 00-09
	Dark Chrome	90 20 80 012 00-19
	Brushed Durabronze (23kt Gold)	90 20 80 012 00-28
	Brushed Gold (PVD)	90 20 80 012 00-37
	Brushed Champagne (22kt Gold)	90 20 80 012 00-46
	Champagne (22kt Gold)	90 20 80 012 00-47
	Brushed Dark Platinum	90 20 80 012 00-99



Handle for side valve Cold Lever 113 x 68 x 60 mm - Brushed Light Gold (PVD) SPARE PARTS

---

90 20 80 012 00



Handle for side valve Cold Lever 113 x 68 x 60 mm - Brushed Light Gold (PVD) SPARE PARTS

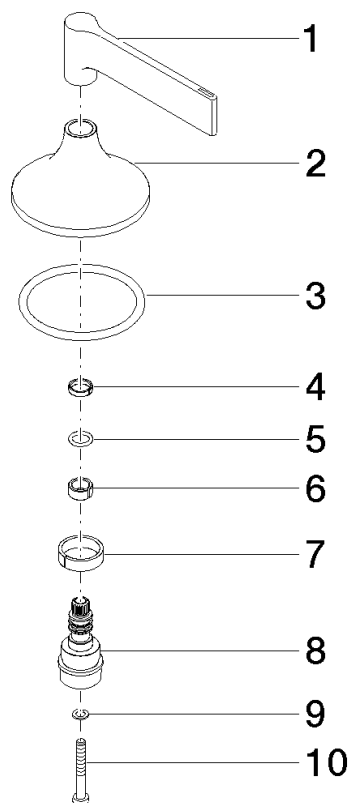
---

90 20 80 012 00

**Handle for side valve Cold Lever 113 x 68 x 60 mm - Brushed Light Gold (PVD) SPARE PARTS**

90 20 80 012 00

Parts for other finishes can be found here: [Chrome](#)



**Spare parts list**

No.	Item Number	Name	Quantity used	Delivery time
7	90 14 15 021 00 90	Ring Ø 19,5 x 5,4 mm -	1.00	14
3	09 14 10 084 90	O-Ring EPDM 70 48 x 3,5 mm -	1.00	14
2	09 27 80 010-27	rosette	1.00	82
5	09 14 10 061 90	O-Ring EPDM 70 7,5 x 1,52 mm -	1.00	14
8	09 29 06 119 90	Extension Ø 20 x 40 mm -	1.00	14
9	09 30 11 194 90	Lock washer Type S Ø 7 x 1 mm -	1.00	14
10	09 30 30 158 90	Mounting Cylinder head screw with hexagon socket Low profile M4 x 30 mm -	1.00	14
4	09 28 10 170 90	Ring Ø 10,5 x 2,5 mm -	1.00	14
6	09 14 15 028 90	Guide ring Ø 1,5 x 5 mm -	1.00	14
1	09 20 80 012-27	handle ( cold )	1.00	82