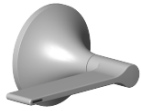


**Handle for side valve Hot Lever 113 x 68 x 60 mm - Brushed Light Gold (PVD)**

**SPARE PARTS**

90 20 80 013 00 Product version from 4/1/2025



	Brushed Light Gold (PVD)	90 20 80 013 00-27
	Chrome	90 20 80 013 00-00
	Brushed Platinum	90 20 80 013 00-06
	Platinum	90 20 80 013 00-08
	Dark Chrome	90 20 80 013 00-19
	Brushed Durabronze (23kt Gold)	90 20 80 013 00-28
	Brushed Gold (PVD)	90 20 80 013 00-37
	Brushed Dark Brass (PVD)	90 20 80 013 00-39
	Brushed Bronze (PVD)	90 20 80 013 00-42
	Brushed Champagne (22kt Gold)	90 20 80 013 00-46
	Champagne (22kt Gold)	90 20 80 013 00-47
	Brushed Dark Platinum	90 20 80 013 00-99



Handle for side valve Hot Lever 113 x 68 x 60 mm - Brushed Light Gold (PVD)

SPARE PARTS

---

90 20 80 013 00 Product version from 4/1/2025



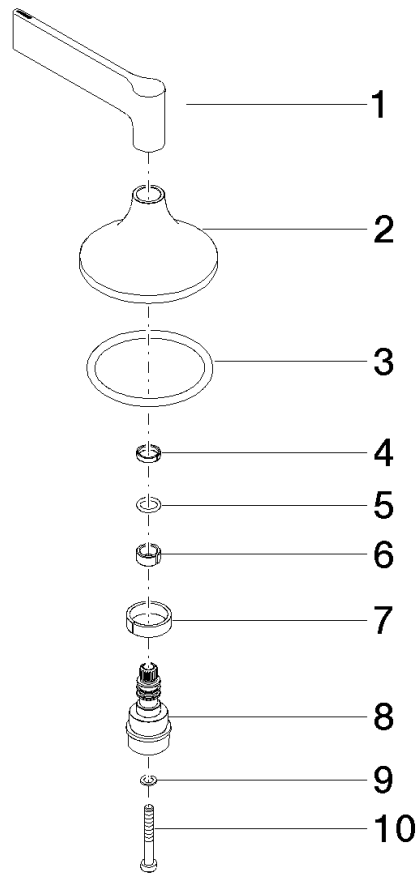
Handle for side valve Hot Lever 113 x 68 x 60 mm - Brushed Light Gold (PVD)

SPARE PARTS

90 20 80 013 00 Product version from 4/1/2025

90 20 80 013 00 Product version from 4/1/2025

Parts for other finishes can be found here: [Chrome](#)



### Spare parts list

No.	Item Number	Name	Quantity used	Delivery time
	3 09 14 10 084 90	O-Ring EPDM 70 48 x 3,5 mm -	1.00	14
	8 09 29 06 119 90	Extension Ø 20 x 40 mm -	1.00	14
	7 90 14 15 021 00 90	Ring Ø 19,5 x 5,4 mm -	1.00	14
	2 09 27 80 010-27	rosette	1.00	82
	10 09 30 30 158 90	Mounting Cylinder head screw with hexagon socket Low profile M4 x 30 mm -	1.00	14
	5 09 14 10 061 90	O-Ring EPDM 70 7,5 x 1,52 mm -	1.00	14
	6 09 14 15 028 90	Guide ring Ø 1,5 x 5 mm -	1.00	14
	1 09 20 80 013-27	handle ( hot )	1.00	82
	9 09 30 11 194 90	Lock washer Type S Ø 7 x 1 mm -	1.00	14
	4 09 28 10 170 90	Ring Ø 10,5 x 2,5 mm -	1.00	14