

35 003 970 90 Product version up to 10/2/2019

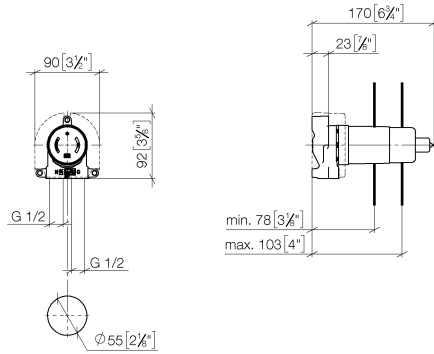


- red brass, lead-free
- 2x female thread 1/2" connections
- dust cover
- anti-water packing
- soundproofing
- WRAS

Can only be combined with exposed trim parts 26
024 661-FF / 36 013 660-FF / 36 045 660-FF / 36
013 970-FF / 36 045 970-FF / 36 804 661-FF.

35 003 970 90 Product version up to 10/2/2019

mm [inches]

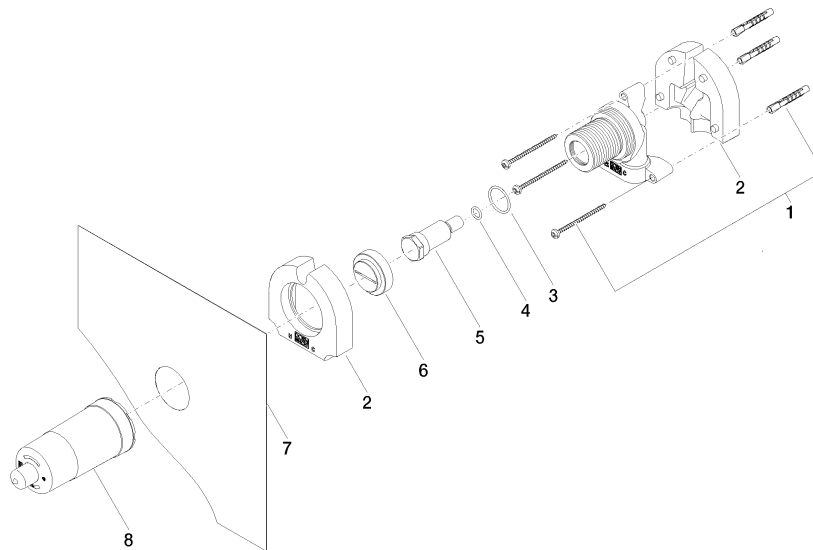


Codes & Standards

DIN 4109	EN 817	ISO 3822	Scottish Water Byelaws
UK Water Supply Regulations	Ü-Zeichen		

Certificates and sustainability

DVGW_DW- 6512DN0	LGA_18	WRAS_2101	EPD-DOR-20230287 -IBA1-EN Environmental.prod uct-declarat
---------------------	--------	-----------	--



Spare parts list

No.	Item Number	Name	Quantity used	Delivery time
2	09 11 11 019 90	2-part installation box for washstand wall mounting Polystyrene body Concealed rough parts 90 x 90 x 42 mm -	2.00	14
6	09 20 97 010 90	Cover Cover for plug, single-point fitting 43 x 43 x 15 mm -	1.00	14
7	04 14 03 079 00 90	Washer for washstand wall mounting Packing -	1.00	14
5	09 31 20 038 90	Plug Ø 26,7 x 65 mm -	1.00	14
8	09 21 02 178 90	Protective cap Ø 55 x 130 mm -	1.00	14
3	09 14 10 112 90	O-Ring 24,0 x 2,0 mm -	1.00	14
1	05 30 31 029 00 90	Mounting 4,5 x 70 mm -	1.00	14
4	09 14 10 139 90	O-Ring EPDM 70 9,0 x 2,0 mm -	1.00	14