

13 801 892 Product version from 4/1/2024



- 200mm projection
- circular normal flow
- rosette Ø 55 mm
- hole diameter 37 mm
- 1/2" connection
- max. flow 29 l/min at 3 bar flow pressure
- WRAS

	Chrome	13 801 892-00
	Brushed Platinum	13 801 892-06
	Platinum	13 801 892-08
	Dark Chrome	13 801 892-19
	Brushed Light Gold (PVD)	13 801 892-27
	Brushed Durabrass (23kt Gold)	13 801 892-28
	Matte Black	13 801 892-33
	Brushed Gold (PVD)	13 801 892-37
	Brushed Dark Brass (PVD)	13 801 892-39
	Brushed Bronze (PVD)	13 801 892-42
	Brushed Dark Bronze (PVD)	13 801 892-43
	Brushed Champagne (22kt Gold)	13 801 892-46
	Champagne (22kt Gold)	13 801 892-47
	Brushed Chrome	13 801 892-93
	Brushed Dark Platinum	13 801 892-99

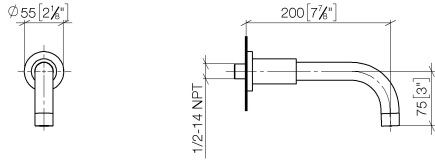
Recommended miscellaneous



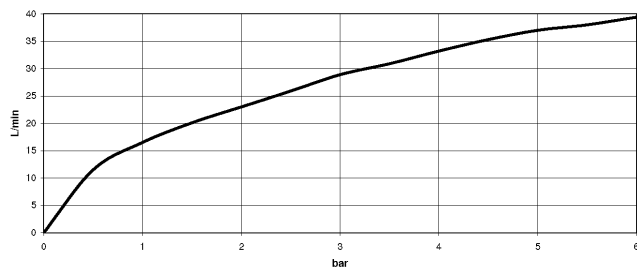
- Concealed wall elbow -** 35 085 970 90
- min. recess depth 90 mm
 - max. recess depth 163 mm

13 801 892 Product version from 4/1/2024

mm [inches]



Flow rate chart



Codes & Standards

ASME A112.18.1	cUPC	DIN 4109	ISO 3822
Scottish Water Byelaws	UK Water Supply Regulations	Ü-Zeichen	



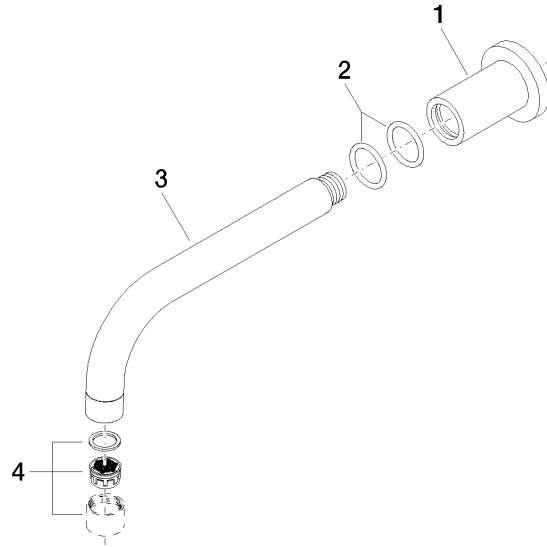
TARA Bath spout for wall mounting - Chrome

TARA

13 801 892 Product version from 4/1/2024

Certificates and sustainability

LGA_18	IAPMO_4976	WRAS_240602	EPD-DOR-20230287 -IBA1-EN Environmental.prod uct-declarat
--------	------------	-------------	--



Spare parts list

No.	Item Number	Name	Quantity used	Delivery time
2	90 14 10 025 00 90	O-Ring 26,0 x 3,5 mm -	2.00	14
3	04 28 22 198 20-00	Spout Ø 25 x 200 mm - Chrome	1.00	20
1	09 27 89 009-00	Rosette Ø 55 x 70 mm - Chrome	1.00	20
4	90 23 01 024 00-00	Aerator M22x1-IG - Chrome	1.00	20