



Color: ■ orange

Material data

Note (material data)	Information on material specifications can be found here
Color	orange
Fire load	0 MJ
Weight	1.6 g

Commercial data

eCl@ss 10.0	27-14-11-92
eCl@ss 9.0	27-14-11-92
ETIM 8.0	EC002848
ETIM 7.0	EC002848
PU (SPU)	50 (25) pcs
Packaging type	Box
Country of origin	DE
GTIN	4055143354394
Customs tariff number	39269097900

Environmental Product Compliance

RoHS Compliance Status	Compliant, No Exemption
------------------------	-------------------------

Downloads

Environmental Product Compliance

Compliance Search

Environmental Product
 Compliance 285-1179



Documentation

Additional Information

Technical Section	pdf 2240.62 KB	↓
-------------------	-------------------	-------------------

Bid Text

285-1179	19.02.2019	xml 2.54 KB	↓
285-1179	27.02.2017	doc 22.00 KB	↓

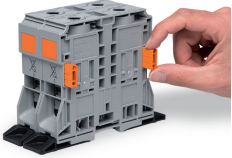
CAD/CAE-Data

CAD data

2D/3D Models 285-1179	↓
--------------------------	-------------------

Installation Notes

Installation



Optionally, insert block-to-block connector (285-1179) into housing slot.

Align and snap high-current, through terminal blocks together.