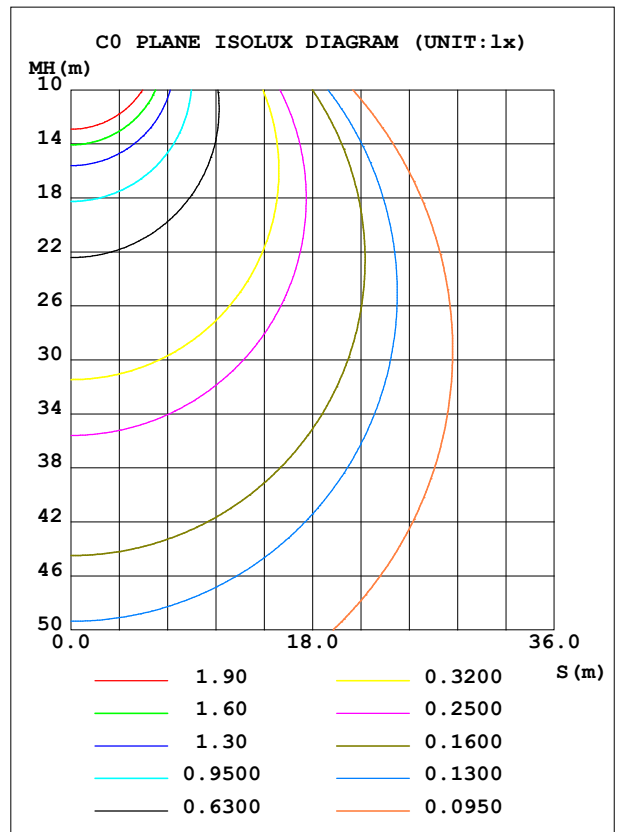
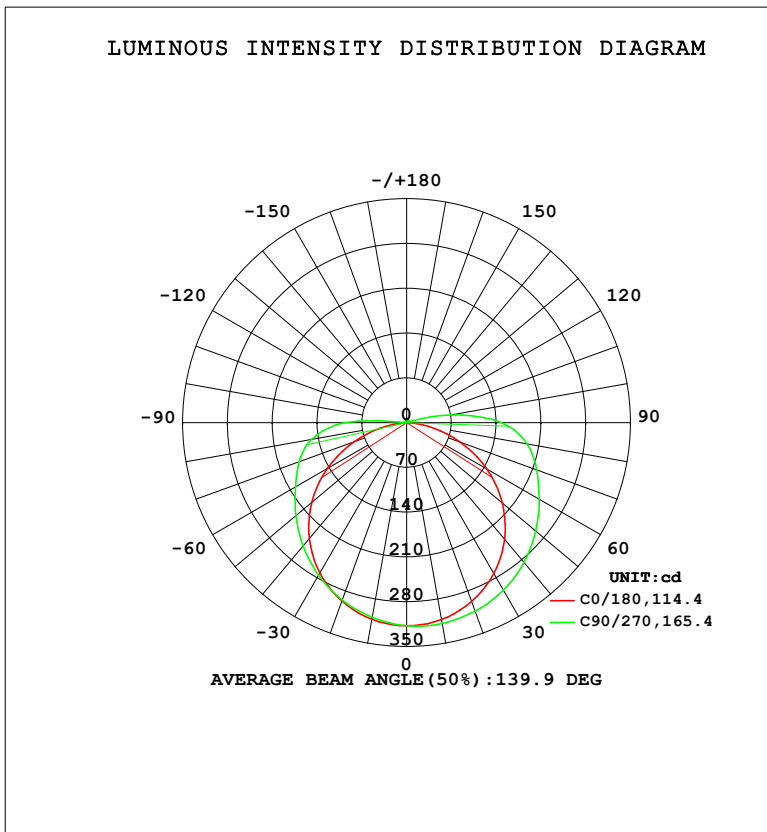


LUMINAIRE PHOTOMETRIC TEST REPORT

Test:U:23.998V I:0.6072A P:15.000W PF:1.0000 Freq:0Hz Lamp Flux:2.62295x480 lm		
NAME: 127-163	TYPE:	WEIGHT:
SPEC.:	DIM.:	SERIAL No.: 1
MFR.: Tronix Lighting	SUR.: 0.005*1	Shielding Angle:

DATA OF LAMP		PHOTOMETRIC DATA				Eff: 83.93 lm/W
MODEL		I _{max} (cd)	319.2	S/MH (C0/180)		1.27
NOMINAL POWER (W)	15	LOR (%)	100.0	S/MH (C90/270)		1.30
RATED VOLTAGE (V)	24	TOTAL FLUX (lm)	1259.0	<input type="checkbox"/> UP, DN (C0-180)		3.6,50.5
NOMINAL FLUX (lm)	2.62295	CIE CLASS	DIRECT	<input type="checkbox"/> UP, DN (C180-360)		1.3,44.6
LAMPS INSIDE	480	<input type="checkbox"/> up (%)	4.9	CIBSE SHR NOM		1.50
TEST VOLTAGE (V)	24	<input type="checkbox"/> down (%)	95.1	CIBSE SHR MAX		1.55



C Range: 0 - 360DEG
 C Interval: 22.5DEG
 Test Speed: HIGH
 Temperature: 25.3DEG
 Operators: YSL
 Test Date: 2021-06-30

Range: 0 - 180DEG
 Interval: 2.0DEG
 Test System: EVERFINE GO-2000B_V1 SYSTEM V2.00.450
 Humidity: 65.0%
 Test Distance: 5.749m [K=1.0000]
 Remarks:

ZONAL FLUX DIAGRAM

ZONAL FLUX DIAGRAM:

°	C0	C45	C90	C135	C180	C225	C270	C315	°	□ zone	□ total	%lum,lamp
10	312.5	316.6	318.8	316.7	312.2	309.6	308.9	309.6	0- 10	30.10	30.10	2.39,2.39
20	297.4	307.2	313.5	307.2	296.7	293.7	295.0	294.1	10- 20	86.97	117.1	9.3,9.3
30	272.4	290.5	302.5	290.4	271.4	270.7	275.6	271.5	20- 30	134.5	251.6	20,20
40	238.1	266.6	285.3	266.6	236.7	240.9	252.0	242.5	30- 40	167.7	419.3	33.3,33.3
50	195.2	236.7	263.5	236.8	193.7	206.7	226.1	209.0	40- 50	183.7	603.0	47.9,47.9
60	144.8	203.1	239.3	203.4	143.0	171.2	200.6	174.2	50- 60	182.0	785.0	62.4,62.4
70	88.82	170.3	216.5	171.0	87.09	139.5	178.9	143.6	60- 70	165.9	950.9	75.5,75.5
80	33.64	142.2	191.0	143.6	32.13	111.6	150.9	115.2	70- 80	141.1	1092	86.7,86.7
90	0.5884	97.96	148.2	100.3	0.6670	62.40	97.08	64.45	80- 90	105.1	1197	95.1,95.1
100	0.9864	24.93	70.77	27.32	0.8731	1.858	2.457	1.902	90-100	42.07	1239	98.4,98.4
110	1.585	2.196	3.496	2.175	1.402	2.127	2.671	2.211	100-110	7.684	1247	99,99
120	2.183	2.497	2.759	2.465	1.967	2.438	2.871	2.544	110-120	2.290	1249	99.2,99.2
130	2.713	2.861	3.001	2.788	2.483	2.734	3.046	2.870	120-130	2.362	1251	99.4,99.4
140	3.149	3.232	3.245	3.128	2.928	3.040	3.215	3.186	130-140	2.304	1254	99.6,99.6
150	3.528	3.587	3.511	3.428	3.334	3.326	3.395	3.495	140-150	2.069	1256	99.7,99.7
160	3.895	3.910	3.860	3.775	3.756	3.661	3.707	3.816	150-160	1.672	1257	99.9,99.9
170	4.279	4.248	4.152	4.152	4.189	4.082	4.067	4.184	160-170	1.122	1259	100,100
180	4.570	4.481	4.461	4.526	4.563	4.479	4.459	4.531	170-180	0.4103	1259	100,100
DEG	LUMINOUS INTENSITY:cd									UNIT:lm		

Conical surface Flux(90deg): 528.76 lm

%lum = 42.0%

%lamp = 42.0%

Conical surface Flux(120deg): 785.01 lm

%lum = 62.4%

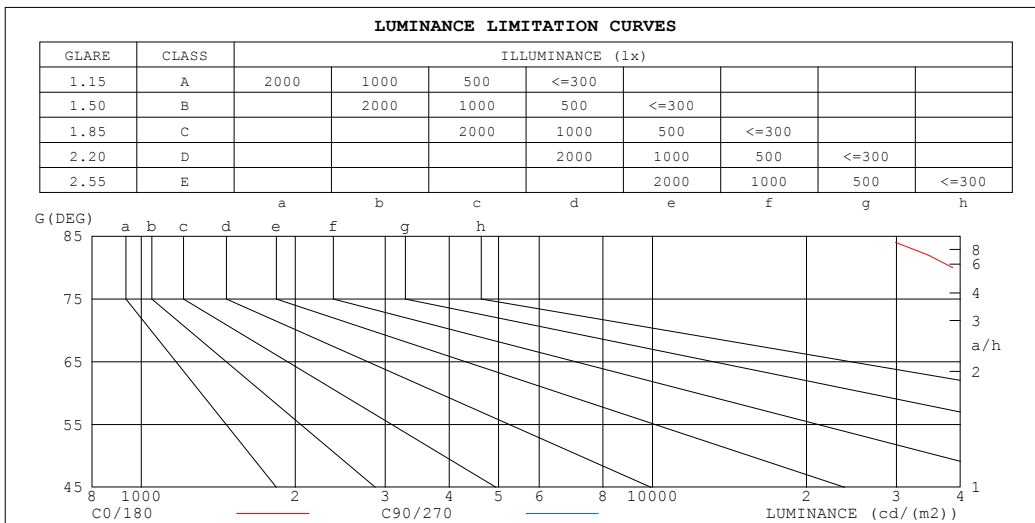
%lamp = 62.4%

C Range: 0 - 360DEG
 C Interval: 22.5DEG
 Test Speed: HIGH
 Temperature:25.3DEG
 Operators:YSL
 Test Date:2021-06-30

□ Range: 0 - 180DEG
 □ Interval: 2.0DEG
 Test System:EVERFINE GO-2000B_V1 SYSTEM V2.00.450
 Humidity:65.0%
 Test Distance:5.749m [K=1.0000]
 Remarks:

LUMINANCE LIMITATION CURVES

Test:U:23.998V I:0.6072A P:15.000W PF:1.0000 Freq:0Hz Lamp Flux:2.62295x480 lm		
NAME: 127-163	TYPE:	WEIGHT:
SPEC.:	DIM.:	SERIAL No.: 1
MFR.: Tronix Lighting	SUR.: 0.005*1	Shielding Angle:



LUMINANCE cd/(m2)		
G (DEG)	C0/180	C90/270
85	35826	407492
80	38644	220295
75	50957	160570
70	51804	126787
65	57976	108849
60	57771	95856
55	61158	88677
50	60593	82118
45	62602	78487

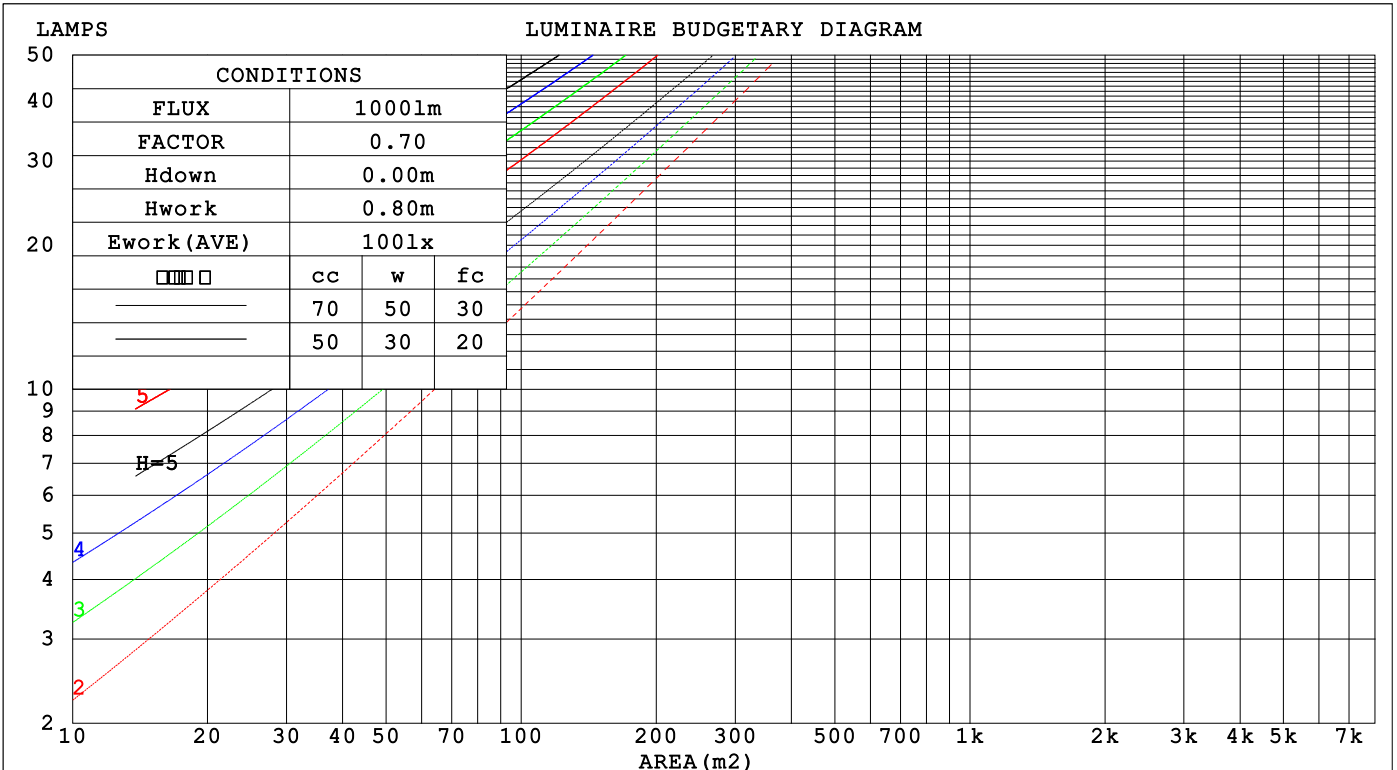
C Range: 0 - 360DEG
 C Interval: 22.5DEG
 Test Speed: HIGH
 Temperature:25.3DEG
 Operators:YSL
 Test Date:2021-06-30

Range: 0 - 180DEG
 Interval: 2.0DEG
 Test System:EVERFINE GO-2000B_V1 SYSTEM V2.00.450
 Humidity:65.0%
 Test Distance:5.749m [K=1.0000]
 Remarks:

CU AND LUMINAIRE BUDGETARY ESTIMATE DIAGRAM

Test:U:23.998V I:0.6072A P:15.000W PF:1.0000 Freq:0Hz		
Lamp Flux:2.62295x480 lm		
NAME: 127-163	TYPE:	WEIGHT:
SPEC.:	DIM.:	SERIAL No.: 1
MFR.: Tronix Lighting	SUR.: 0.005*1	Shielding Angle:

□cc	80%			70%			50%			30%			10%			0
□w	50%	30%	10%	50%	30%	10%	50%	30%	10%	50%	30%	10%	50%	30%	10%	0
□fc	20%			20%			20%			20%			20%			0
RCR	RCR:Room Cavity Ratio						Coefficients of Utilization(CU)									
0.0	1.18	1.18	1.18	1.15	1.15	1.15	1.08	1.08	1.08	1.03	1.03	1.03	.98	.98	.98	.95
1.0	.98	.92	.87	.95	.90	.85	.90	.85	.82	.85	.81	.78	.80	.78	.75	.72
2.0	.83	.75	.68	.81	.73	.67	.76	.70	.65	.72	.67	.62	.68	.64	.60	.58
3.0	.72	.63	.55	.70	.62	.55	.66	.59	.53	.63	.57	.51	.60	.54	.50	.47
4.0	.63	.54	.46	.62	.53	.45	.58	.50	.44	.55	.49	.43	.53	.47	.42	.39
5.0	.56	.46	.39	.55	.46	.39	.52	.44	.38	.49	.42	.37	.47	.41	.36	.34
6.0	.50	.41	.34	.49	.40	.33	.47	.39	.33	.45	.37	.32	.42	.36	.31	.29
7.0	.46	.36	.30	.44	.36	.29	.42	.34	.29	.40	.33	.28	.39	.32	.28	.25
8.0	.41	.32	.26	.40	.32	.26	.39	.31	.25	.37	.30	.25	.35	.29	.25	.22
9.0	.38	.29	.23	.37	.29	.23	.36	.28	.23	.34	.27	.22	.33	.27	.22	.20
10.0	.35	.27	.21	.34	.26	.21	.33	.26	.21	.32	.25	.20	.30	.24	.20	.18



C Range: 0 - 360DEG
 C Interval: 22.5DEG
 Test Speed: HIGH
 Temperature:25.3DEG
 Operators:YSL
 Test Date:2021-06-30

□ Range: 0 - 180DEG
 □ Interval: 2.0DEG
 Test System:EVERFINE GO-2000B_V1 SYSTEM V2.00.450
 Humidity:65.0%
 Test Distance:5.749m [K=1.0000]
 Remarks:

WEC AND CCEC

Test:U:23.998V I:0.6072A P:15.000W PF:1.0000 Freq:0Hz								
Lamp Flux:2.62295x480 lm								
NAME: 127-163			TYPE:			WEIGHT:		
SPEC.:			DIM.:			SERIAL No.: 1		
MFR.: Tronix Lighting			SUR.: 0.005*1			Shielding Angle:		

<input type="checkbox"/> cc	80%			70%			50%			30%			10%			0
<input type="checkbox"/> w	50%	30%	10%	50%	30%	10%	50%	30%	10%	50%	30%	10%	50%	30%	10%	0
<input type="checkbox"/> fc	20%			20%			20%			20%			20%			0
RCR	RCR:Room Cavity Ratio						Wall Exitance Coefficients (WEC)									
0.0																
1.0	.403	.229	.073	.394	.225	.071	.378	.217	.069	.363	.209	.067	.349	.202	.065	
2.0	.348	.191	.058	.340	.187	.058	.325	.181	.056	.312	.175	.055	.299	.169	.053	
3.0	.308	.164	.049	.301	.161	.049	.288	.156	.047	.276	.151	.046	.264	.146	.045	
4.0	.277	.144	.042	.270	.141	.042	.258	.137	.041	.247	.133	.040	.237	.129	.039	
5.0	.251	.128	.037	.245	.126	.037	.235	.122	.036	.225	.119	.035	.216	.115	.035	
6.0	.229	.115	.033	.224	.113	.033	.215	.110	.032	.206	.107	.031	.198	.104	.031	
7.0	.211	.104	.030	.207	.103	.029	.198	.100	.029	.190	.097	.028	.183	.095	.028	
8.0	.196	.096	.027	.192	.094	.027	.184	.092	.026	.177	.089	.026	.170	.087	.025	
9.0	.182	.088	.025	.178	.087	.024	.171	.085	.024	.165	.083	.024	.159	.081	.023	
10.0	.170	.082	.023	.167	.081	.022	.161	.079	.022	.155	.077	.022	.149	.075	.021	

<input type="checkbox"/> cc	80%			70%			50%			30%			10%			0
<input type="checkbox"/> w	50%	30%	10%	50%	30%	10%	50%	30%	10%	50%	30%	10%	50%	30%	10%	0
<input type="checkbox"/> fc	20%			20%			20%			20%			20%			0
RCR	RCR:Room Cavity Ratio						Ceiling Cavity Exitance Coefficients (CCEC)									
0.0	.228	.228	.228	.195	.195	.195	.133	.133	.133	.076	.076	.076	.024	.024	.024	
1.0	.225	.193	.165	.192	.166	.142	.131	.114	.098	.076	.066	.057	.024	.021	.018	
2.0	.218	.170	.129	.187	.146	.112	.128	.101	.078	.074	.059	.046	.024	.019	.015	
3.0	.210	.153	.107	.180	.132	.093	.124	.092	.065	.071	.053	.038	.023	.017	.013	
4.0	.202	.140	.093	.173	.121	.081	.119	.084	.057	.069	.049	.034	.022	.016	.011	
5.0	.194	.130	.083	.167	.112	.072	.115	.079	.051	.066	.046	.030	.021	.015	.010	
6.0	.186	.122	.076	.160	.106	.066	.110	.074	.047	.064	.043	.028	.021	.014	.009	
7.0	.179	.115	.070	.154	.100	.061	.106	.070	.043	.062	.041	.026	.020	.013	.009	
8.0	.172	.109	.066	.148	.095	.058	.102	.067	.041	.060	.039	.024	.019	.013	.008	
9.0	.165	.104	.063	.142	.091	.055	.099	.064	.039	.058	.038	.023	.019	.012	.008	
10.0	.159	.100	.061	.137	.087	.053	.095	.061	.038	.056	.036	.022	.018	.012	.007	

C Range: 0 - 360DEG
 C Interval: 22.5DEG
 Test Speed: HIGH
 Temperature:25.3DEG
 Operators:YSL
 Test Date:2021-06-30

Range: 0 - 180DEG
 Interval: 2.0DEG
 Test System:EVERFINE GO-2000B_V1 SYSTEM V2.00.450
 Humidity:65.0%
 Test Distance:5.749m [K=1.0000]
 Remarks:

UGR(Unified Glare Rating) Table

Test:U:23.998V I:0.6072A P:15.000W PF:1.0000 Freq:0Hz										
Lamp Flux:2.62295x480 lm										
NAME: 127-163					TYPE:			WEIGHT:		
SPEC.:					DIM.:			SERIAL No.: 1		
MFR.: Tronix Lighting					SUR.: 0.005*1			Shielding Angle:		
ceiling/cavity	0.7	0.7	0.5	0.5	0.3	0.7	0.7	0.5	0.5	0.3
walls	0.5	0.3	0.5	0.3	0.3	0.5	0.3	0.5	0.3	0.3
working plane	0.2	0.2	0.2	0.2	0.2	0.2	0.2	0.2	0.2	0.2
Room dimensions	Viewed crosswise					Viewed endwise				
x = 2H y = 2H	25.9	27.5	26.2	27.8	28.1	27.9	29.5	28.2	29.8	30.1
3H	27.5	29.0	27.9	29.3	29.7	30.7	32.2	31.1	32.5	32.9
4H	28.1	29.5	28.5	29.9	30.3	32.3	33.7	32.7	34.0	34.4
6H	28.6	29.9	29.0	30.3	30.7	34.0	35.4	34.4	35.7	36.1
8H	28.7	30.0	29.1	30.4	30.8	35.0	36.3	35.4	36.6	37.1
12H	28.8	30.0	29.2	30.4	30.9	36.0	37.3	36.5	37.7	38.1
4H 2H	27.1	28.5	27.5	28.9	29.2	28.5	29.9	28.9	30.3	30.7
3H	29.0	30.2	29.4	30.6	31.1	31.6	32.8	32.0	33.2	33.7
4H	29.8	31.0	30.3	31.4	31.9	33.4	34.5	33.8	35.0	35.4
6H	30.5	31.6	31.0	32.0	32.5	35.4	36.4	35.8	36.8	37.3
8H	30.8	31.8	31.3	32.2	32.7	36.4	37.4	36.9	37.9	38.4
12H	31.0	31.9	31.5	32.3	32.9	37.6	38.5	38.1	39.0	39.5
8H 4H	31.0	32.0	31.5	32.5	33.0	33.8	34.8	34.3	35.2	35.7
6H	32.2	33.0	32.7	33.5	34.0	36.1	36.9	36.6	37.4	38.0
8H	32.7	33.4	33.2	33.9	34.5	37.4	38.1	37.9	38.7	39.2
12H	33.1	33.7	33.6	34.3	34.9	38.9	39.5	39.4	40.1	40.6
12H 4H	31.4	32.3	31.9	32.8	33.3	33.8	34.7	34.3	35.2	35.7
6H	32.8	33.6	33.4	34.1	34.6	36.2	37.0	36.8	37.5	38.1
8H	33.5	34.2	34.1	34.7	35.3	37.6	38.3	38.2	38.8	39.4
Variations with the observer position at spacings(CIE Pub.117):										
S = 1.0H	+ 0.1 / - 0.1					+ 0.1 / - 0.1				
1.5H	+ 0.2 / - 0.3					+ 0.2 / - 0.3				
2.0H	+ 0.2 / - 0.4					+ 0.2 / - 0.4				

CIE Pub.117, 1259 lm Total Lamp Luminous Flux Correct (8log(F/F0) = 0.8)
 Area: 0.005 m2

C Range: 0 - 360DEG
 C Interval: 22.5DEG
 Test Speed: HIGH
 Temperature:25.3DEG
 Operators:YSL
 Test Date:2021-06-30

Range: 0 - 180DEG
 Interval: 2.0DEG
 Test System:EVERFINE GO-2000B_V1 SYSTEM V2.00.450
 Humidity:65.0%
 Test Distance:5.749m [K=1.0000]
 Remarks:

UTILIZATION FACTORS TABLE

Test:U:23.998V I:0.6072A P:15.000W PF:1.0000 Freq:0Hz Lamp Flux:2.62295x480 lm		
NAME: 127-163	TYPE:	WEIGHT:
SPEC.:	DIM.:	SERIAL No.: 1
MFR.: Tronix Lighting	SUR.: 0.005*1	Shielding Angle:

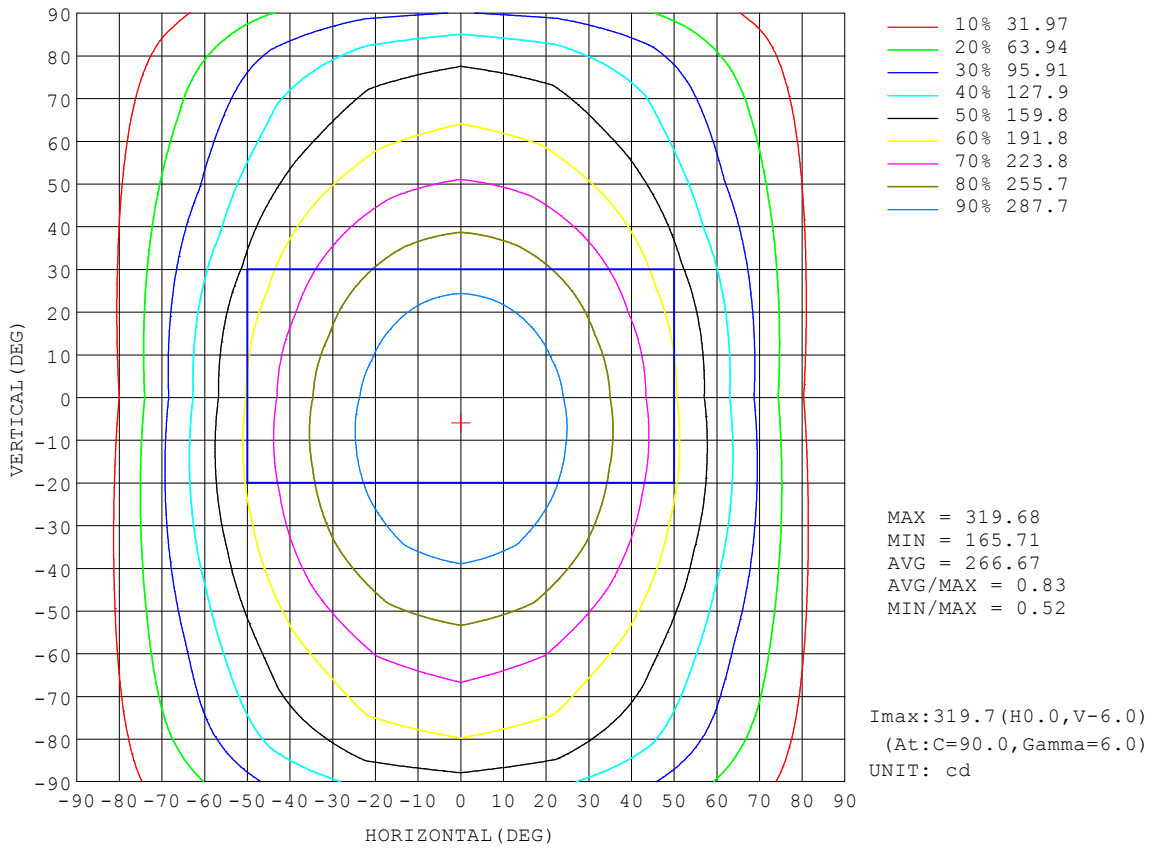
REFLECTANCE										
Ceiling	0.8	0.8	0.8	0.7	0.7	0.7	0.5	0.5	0.5	0
Walls	0.7	0.5	0.3	0.7	0.5	0.3	0.7	0.5	0.3	0
Working plane	0.2	0.2	0.2	0.2	0.2	0.2	0.2	0.2	0.2	0
ROOM INDEX	UTILIZATION FACTORS (PERCENT) $k(RI) \times RCR = 5$									
k = 0.60	51	39	31	50	38	31	49	38	31	24
0.80	60	48	39	59	47	39	57	46	39	31
1.00	68	56	47	67	55	47	64	56	46	38
1.25	75	63	54	73	62	54	70	60	53	44
1.50	80	68	60	78	67	59	75	65	58	49
2.00	88	77	69	85	75	68	81	73	66	57
2.50	92	82	74	89	80	73	85	77	71	61
3.00	96	87	79	93	85	78	88	81	76	65
4.00	100	93	86	97	90	85	92	86	82	71
5.00	103	96	91	100	94	89	95	90	85	74
ROOM INDEX	UF(total)									Direct
According to DIN EN 13032-2 2004			Suspended				SHRNOM = 1.25			

C Range: 0 - 360DEG
 C Interval: 22.5DEG
 Test Speed: HIGH
 Temperature:25.3DEG
 Operators:YSL
 Test Date:2021-06-30

Range: 0 - 180DEG
 Interval: 2.0DEG
 Test System:EVERFINE GO-2000B_V1 SYSTEM V2.00.450
 Humidity:65.0%
 Test Distance:5.749m [K=1.0000]
 Remarks:

ISOCANDELA DIAGRAM

Test:U:23.998V I:0.6072A P:15.000W PF:1.0000 Freq:0Hz Lamp Flux:2.62295x480 lm		
NAME: 127-163	TYPE:	WEIGHT:
SPEC.:	DIM.:	SERIAL No.: 1
MFR.: Tronix Lighting	SUR.: 0.005*1	Shielding Angle:

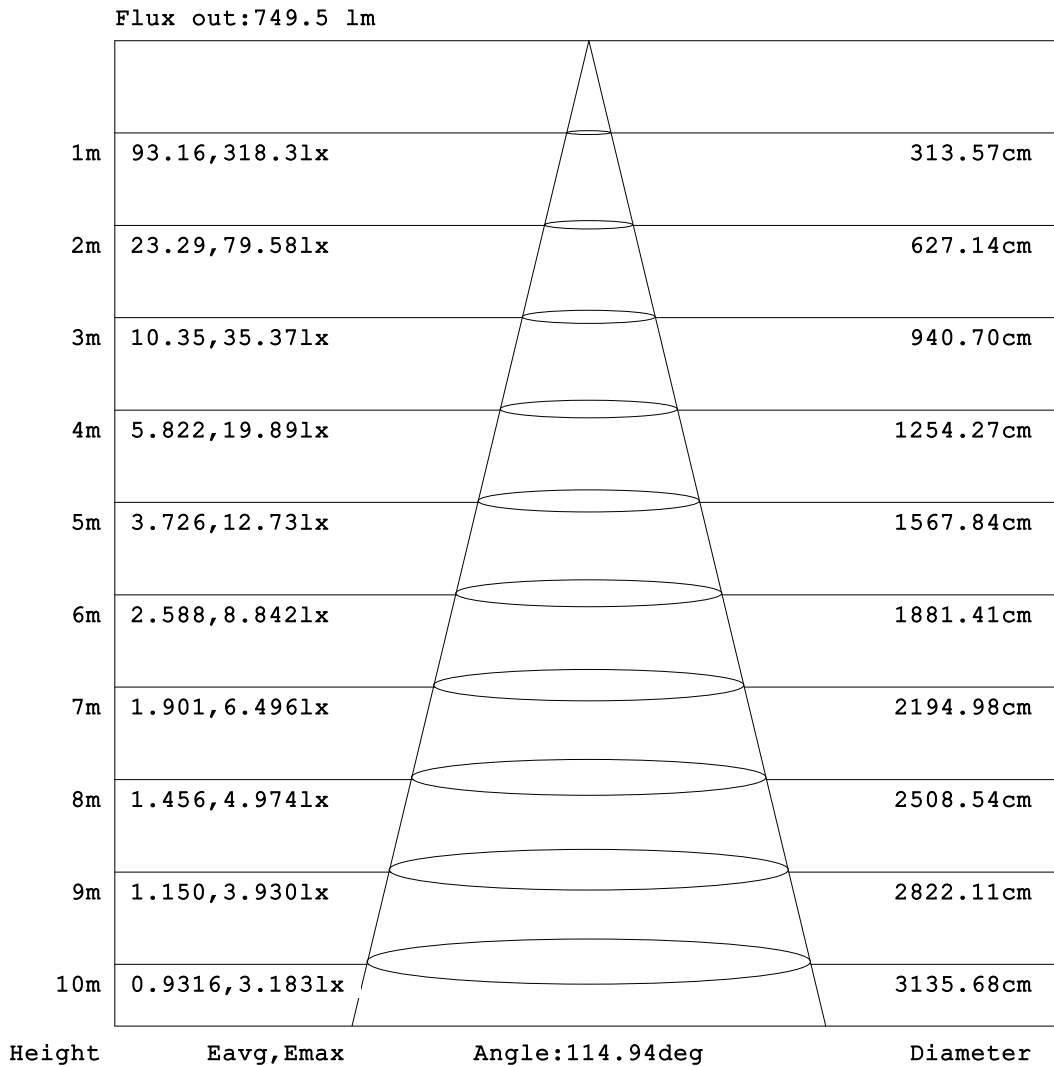


C Range: 0 - 360DEG
C Interval: 22.5DEG
Test Speed: HIGH
Temperature: 25.3DEG
Operators: YSL
Test Date: 2021-06-30

Range: 0 - 180DEG
 Interval: 2.0DEG
Test System: EVERFINE GO-2000B_V1 SYSTEM V2.00.450
Humidity: 65.0%
Test Distance: 5.749m [K=1.0000]
Remarks:

AAI Figure

Test:U:23.998V I:0.6072A P:15.000W PF:1.0000 Freq:0Hz Lamp Flux:2.62295x480 lm		
NAME: 127-163	TYPE:	WEIGHT:
SPEC.:	DIM.:	SERIAL No.: 1
MFR.: Tronix Lighting	SUR.: 0.005*1	Shielding Angle:



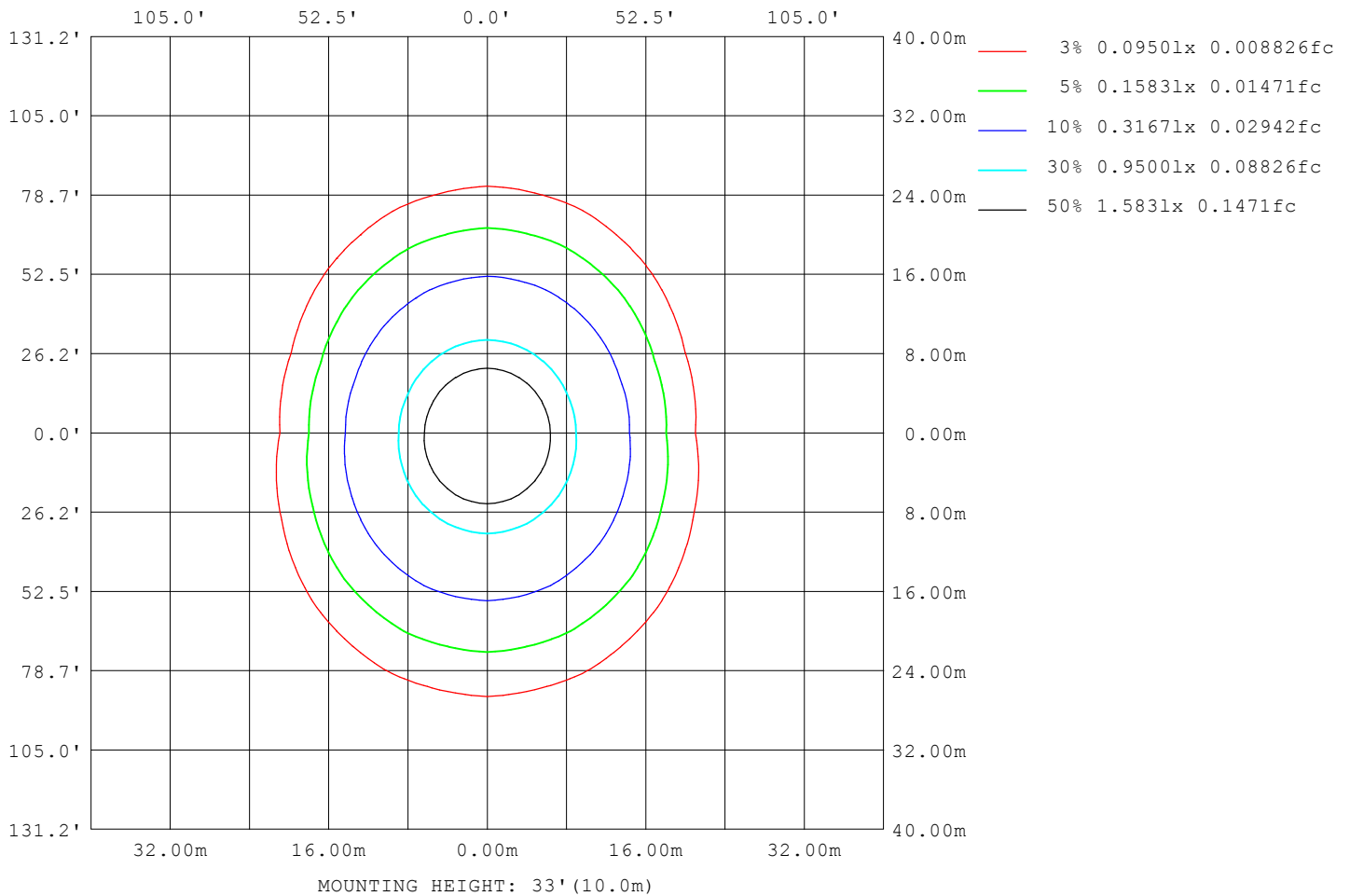
Note:The Curves indicate the illuminated area and the average illumination when the luminaire is at different distance.

C Range: 0 - 360DEG
 C Interval: 22.5DEG
 Test Speed: HIGH
 Temperature:25.3DEG
 Operators:YSL
 Test Date:2021-06-30

Range: 0 - 180DEG
 Interval: 2.0DEG
 Test System:EVERFINE GO-2000B_V1 SYSTEM V2.00.450
 Humidity:65.0%
 Test Distance:5.749m [K=1.0000]
 Remarks:

ISOLUX DIAGRAM

Test:U:23.998V I:0.6072A P:15.000W PF:1.0000 Freq:0Hz Lamp Flux:2.62295x480 lm		
NAME: 127-163	TYPE:	WEIGHT:
SPEC.:	DIM.:	SERIAL No.: 1
MFR.: Tronix Lighting	SUR.: 0.005*1	Shielding Angle:



C Range: 0 - 360DEG
 C Interval: 22.5DEG
 Test Speed: HIGH
 Temperature:25.3DEG
 Operators:YSL
 Test Date:2021-06-30

Range: 0 - 180DEG
 Interval: 2.0DEG
 Test System:EVERFINE GO-2000B_V1 SYSTEM V2.00.450
 Humidity:65.0%
 Test Distance:5.749m [K=1.0000]
 Remarks:

LED Avg.L Report

Test:U:23.998V I:0.6072A P:15.000W PF:1.0000 Freq:0Hz Lamp Flux:2.62295x480 lm		
NAME: 127-163	TYPE:	WEIGHT:
SPEC.:	DIM.:	SERIAL No.: 1
MFR.: Tronix Lighting	SUR.: 0.005*1	Shielding Angle:

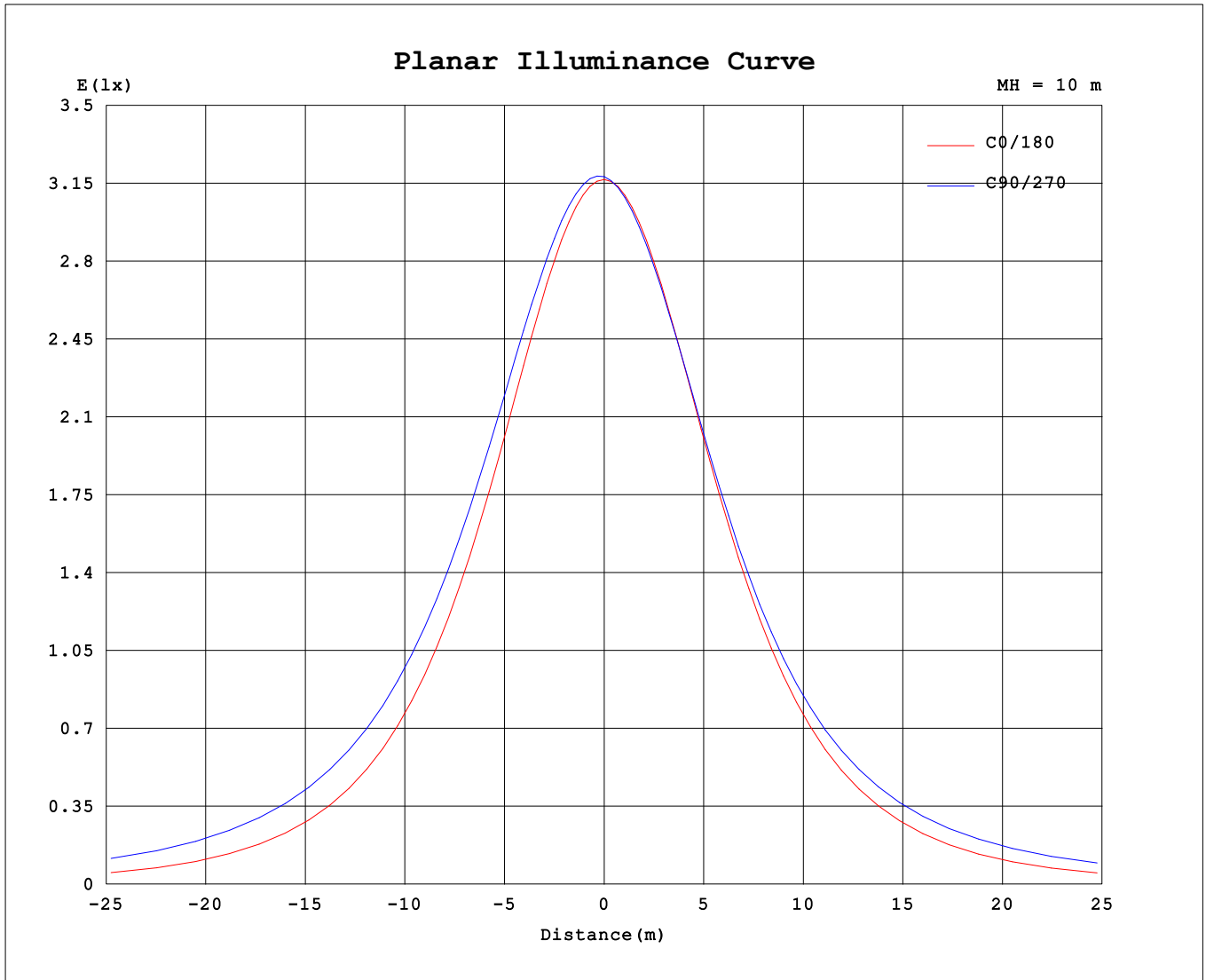
AvgL	cd/m2
L_0~180 (65) av	55076
L_0~180 (75) av	46041
L_0~180 (85) av	26303
L_90~270 (65) av	98617
L_90~270 (75) av	143641
L_90~270 (85) av	345494
L_45 (65) av	81074
L_45 (75) av	110432
L_45 (85) av	247818

Standard: GB/T 29293-2012

C Range: 0 - 360DEG
 C Interval: 22.5DEG
 Test Speed: HIGH
 Temperature:25.3DEG
 Operators:YSL
 Test Date:2021-06-30

Range: 0 - 180DEG
 Interval: 2.0DEG
 Test System:EVERFINE GO-2000B_V1 SYSTEM V2.00.450
 Humidity:65.0%
 Test Distance:5.749m [K=1.0000]
 Remarks:

Planar Illuminance Curve



C Range: 0 - 360DEG
 C Interval: 22.5DEG
 Test Speed: HIGH
 Temperature: 25.3DEG
 Operators: YSL
 Test Date: 2021-06-30

Range: 0 - 180DEG
 Interval: 2.0DEG
 Test System: EVERFINE GO-2000B_V1 SYSTEM V2.00.450
 Humidity: 65.0%
 Test Distance: 5.749m [K=1.0000]
 Remarks:

LUMINOUS DISTRIBUTION INTENSITY DATA

Test:U:23.998V I:0.6072A P:15.000W PF:1.0000 Freq:0Hz Lamp Flux:2.62295x480 lm		
NAME: 127-163	TYPE:	WEIGHT:
SPEC.:	DIM.:	SERIAL No.: 1
MFR.: Tronix Lighting	SUR.: 0.005*1	Shielding Angle:

Table--1

UNIT: cd

C (DEG) \ □ (DEG)	0	22.5	45	67.5	90	112.5	135	157.5	180	202.5	225	247.5	270	292.5	315	337.5			
0	317	317	317	317	317	317	317	317	317	317	317	317	317	317	317	317			
5	317	318	318	319	319	319	318	317	317	316	315	315	315	315	315	316			
10	313	315	317	318	319	318	317	314	312	310	310	309	309	309	310	311			
15	308	311	314	316	317	317	314	310	307	305	304	304	304	304	304	305			
20	297	302	307	312	313	312	307	302	297	294	294	294	295	294	294	294			
25	289	294	301	308	310	308	301	294	288	284	285	287	288	287	286	285			
30	272	280	290	299	302	299	290	280	271	268	271	274	276	274	272	269			
35	260	269	282	293	296	293	282	268	259	255	259	264	266	265	261	257			
40	238	250	267	280	285	280	267	249	237	234	241	248	252	249	242	236			
45	222	236	255	271	277	271	255	235	220	219	228	237	242	238	229	221			
50	195	212	237	256	263	257	237	212	194	194	207	220	226	221	209	196			
55	176	196	224	246	254	246	224	195	174	176	192	209	216	210	195	178			
60	145	169	203	230	239	230	203	169	143	148	171	192	201	194	174	151			
65	123	151	190	219	230	219	190	151	121	129	158	182	192	183	161	133			
70	88.8	123	170	205	216	205	171	124	87.1	102	140	168	179	170	144	106			
75	66.1	106	159	196	207	196	160	107	64.3	85.9	129	158	169	160	133	90.3			
80	33.6	83.8	142	178	191	179	144	85.8	32.1	66.3	112	140	151	142	115	71.3			
85	15.7	71.5	127	165	177	166	129	73.7	14.5	53.4	95.1	122	133	124	98.3	57.9			
90	0.59	44.4	98.0	135	148	137	100	46.6	0.67	25.4	62.4	87.3	97.1	87.9	64.5	28.7			
95	0.69	20.1	70.5	108	121	110	73.3	22.1	0.63	1.10	10.6	33.7	43.5	32.6	10.7	1.34			
100	0.99	1.51	24.9	58.6	70.8	60.8	27.3	1.34	0.87	1.24	1.86	2.31	2.46	2.33	1.90	1.27			
105	1.22	1.47	3.03	27.4	38.3	29.4	3.64	1.51	1.07	1.40	1.97	2.38	2.53	2.40	2.01	1.43			
110	1.58	1.72	2.20	2.93	3.50	2.86	2.18	1.76	1.40	1.66	2.13	2.53	2.67	2.57	2.21	1.69			
115	1.83	1.91	2.29	2.62	2.83	2.59	2.29	1.94	1.63	1.84	2.25	2.59	2.76	2.66	2.35	1.88			
120	2.18	2.22	2.50	2.68	2.76	2.69	2.46	2.23	1.97	2.10	2.44	2.73	2.87	2.81	2.54	2.15			
125	2.41	2.43	2.64	2.79	2.85	2.80	2.60	2.42	2.18	2.28	2.55	2.81	2.94	2.90	2.67	2.34			
130	2.71	2.74	2.86	2.97	3.00	2.94	2.79	2.68	2.48	2.54	2.73	2.95	3.05	3.04	2.87	2.62			
135	2.90	2.92	3.01	3.09	3.10	3.05	2.92	2.84	2.67	2.70	2.86	3.05	3.12	3.13	3.00	2.80			
140	3.15	3.19	3.23	3.25	3.25	3.21	3.13	3.08	2.93	2.93	3.04	3.18	3.21	3.27	3.19	3.05			
145	3.30	3.34	3.38	3.38	3.35	3.34	3.24	3.22	3.10	3.07	3.15	3.27	3.28	3.35	3.31	3.21			
150	3.53	3.57	3.59	3.55	3.51	3.49	3.43	3.45	3.33	3.29	3.33	3.42	3.40	3.48	3.49	3.44			
155	3.67	3.72	3.72	3.66	3.65	3.61	3.55	3.60	3.50	3.45	3.45	3.52	3.50	3.57	3.62	3.60			
160	3.90	3.94	3.91	3.84	3.86	3.77	3.77	3.84	3.76	3.69	3.66	3.69	3.71	3.73	3.82	3.85			
165	4.04	4.08	4.04	3.95	4.00	3.89	3.92	4.00	3.93	3.87	3.82	3.82	3.86	3.85	3.96	4.01			
170	4.28	4.30	4.25	4.16	4.15	4.11	4.15	4.25	4.19	4.14	4.08	4.05	4.07	4.06	4.18	4.27			
175	4.43	4.40	4.39	4.32	4.30	4.27	4.31	4.41	4.35	4.31	4.26	4.22	4.23	4.22	4.34	4.42			
180	4.57	4.53	4.48	4.44	4.46	4.43	4.53	4.61	4.56	4.53	4.48	4.44	4.46	4.43	4.53	4.61			

C Range: 0 - 360DEG
 C Interval: 22.5DEG
 Test Speed: HIGH
 Temperature:25.3DEG
 Operators:YSL
 Test Date:2021-06-30

□ Range: 0 - 180DEG
 □ Interval: 2.0DEG
 Test System:EVERFINE GO-2000B_V1 SYSTEM V2.00.450
 Humidity:65.0%
 Test Distance:5.749m [K=1.0000]
 Remarks: