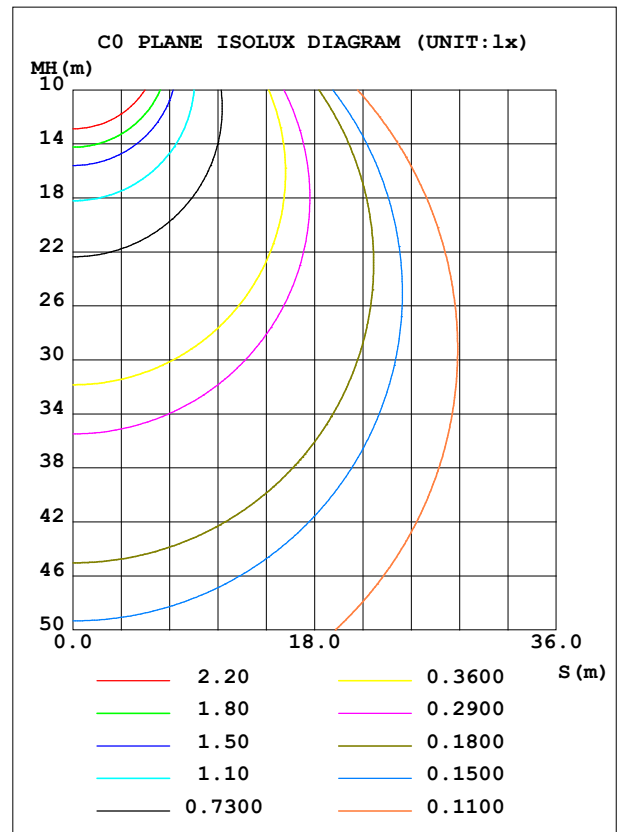
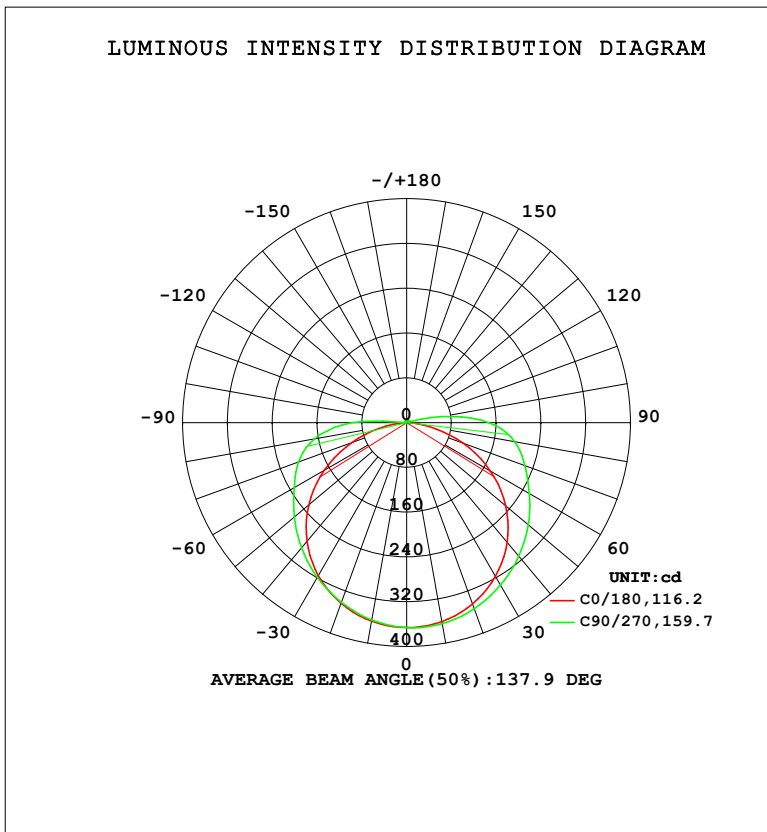


LUMINAIRE PHOTOMETRIC TEST REPORT

Test:U:23.998V I:0.5818A P:13.962W PF:1.0000 Freq:0Hz Lamp Flux:2.93648x480 lm		
NAME: 127-161	TYPE:	WEIGHT:
SPEC.:	DIM.:	SERIAL No.: 1
MFR.: Tronix Lighting	SUR.: 0.005*1	Shielding Angle:

DATA OF LAMP		PHOTOMETRIC DATA			
MODEL		Imax (cd)	366.7	S/MH (C0/180)	1.28
NOMINAL POWER (W)	15	LOR (%)	100.0	S/MH (C90/270)	1.30
RATED VOLTAGE (V)	24	TOTAL FLUX (lm)	1409.5	<input type="checkbox"/> UP, DN (C0-180)	3.1,49.6
NOMINAL FLUX (lm)	2.93648	CIE CLASS	DIRECT	<input type="checkbox"/> UP, DN (C180-360)	1.2,46.1
LAMPS INSIDE	480	<input type="checkbox"/> up (%)	4.3	CIBSE SHR NOM	1.50
TEST VOLTAGE (V)	24	<input type="checkbox"/> down (%)	95.7	CIBSE SHR MAX	1.55



C Range: 0 - 360DEG
 C Interval: 22.5DEG
 Test Speed: HIGH
 Temperature: 25.3DEG
 Operators: YSL
 Test Date: 2021-06-30

Range: 0 - 180DEG
 Interval: 2.0DEG
 Test System: EVERFINE GO-2000B_V1 SYSTEM V2.00.450
 Humidity: 65.0%
 Test Distance: 5.749m [K=1.0000]
 Remarks:

ZONAL FLUX DIAGRAM

ZONAL FLUX DIAGRAM:

°	C0	C45	C90	C135	C180	C225	C270	C315	°	□ zone	□ total	%lum,lamp
10	360.9	363.4	364.6	363.3	360.3	358.7	358.2	358.8	0- 10	34.71	34.71	2.46,2.46
20	344.6	350.6	353.7	350.1	343.3	341.1	341.3	341.5	10- 20	100.2	134.9	9.57,9.57
30	317.3	328.1	335.1	327.4	315.5	314.6	319.1	315.5	20- 30	154.4	289.3	20.5,20.5
40	279.3	297.5	311.7	296.6	277.0	281.4	292.0	283.0	30- 40	192.0	481.3	34.1,34.1
50	230.8	261.1	283.7	260.2	228.1	242.6	262.0	244.9	40- 50	209.6	690.9	49,49
60	172.8	220.7	253.2	219.8	169.7	201.5	232.2	204.4	50- 60	206.5	897.4	63.7,63.7
70	106.8	180.8	224.8	180.4	104.1	164.4	205.6	168.0	60- 70	186.3	1084	76.9,76.9
80	40.62	148.1	195.9	148.4	38.45	127.9	166.9	130.3	70- 80	155.2	1239	87.9,87.9
90	0.6560	98.03	146.9	98.90	0.6702	64.84	98.02	64.87	80- 90	110.2	1349	95.7,95.7
100	1.142	18.05	62.61	19.62	1.012	1.955	2.651	1.995	90-100	40.33	1389	98.6,98.6
110	1.851	2.428	4.137	2.556	1.645	2.288	2.785	2.352	100-110	6.266	1396	99,99
120	2.552	2.859	3.150	2.884	2.310	2.664	3.060	2.759	110-120	2.556	1398	99.2,99.2
130	3.165	3.302	3.456	3.267	2.907	3.034	3.300	3.161	120-130	2.673	1401	99.4,99.4
140	3.659	3.744	3.756	3.654	3.408	3.403	3.533	3.553	130-140	2.622	1403	99.6,99.6
150	4.087	4.116	4.079	3.980	3.870	3.764	3.790	3.943	140-150	2.365	1406	99.7,99.7
160	4.497	4.480	4.423	4.339	4.348	4.172	4.191	4.345	150-160	1.914	1408	99.9,99.9
170	4.934	4.875	4.803	4.772	4.837	4.679	4.647	4.785	160-170	1.286	1409	100,100
180	5.268	5.169	5.139	5.210	5.263	5.164	5.136	5.210	170-180	0.4714	1410	100,100
DEG	LUMINOUS INTENSITY:cd									UNIT:lm		

Conical surface Flux(90deg): 606.29 lm

%lum = 43.0%

%lamp = 43.0%

Conical surface Flux(120deg): 897.36 lm

%lum = 63.7%

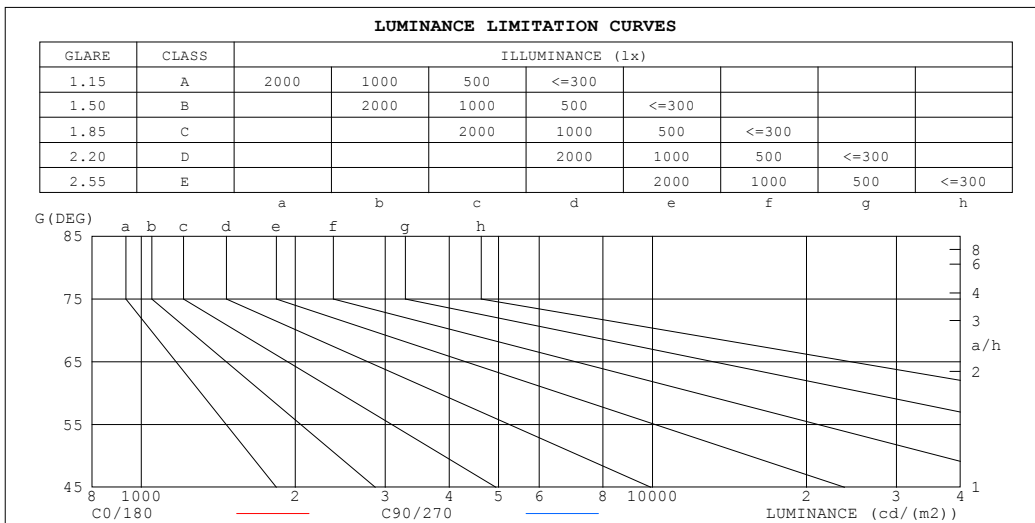
%lamp = 63.7%

C Range: 0 - 360DEG
 C Interval: 22.5DEG
 Test Speed: HIGH
 Temperature:25.3DEG
 Operators:YSL
 Test Date:2021-06-30

□ Range: 0 - 180DEG
 □ Interval: 2.0DEG
 Test System:EVERFINE GO-2000B_V1 SYSTEM V2.00.450
 Humidity:65.0%
 Test Distance:5.749m [K=1.0000]
 Remarks:

LUMINANCE LIMITATION CURVES

Test:U:23.998V I:0.5818A P:13.962W PF:1.0000 Freq:0Hz		
Lamp Flux:2.93648x480 lm		
NAME: 127-161	TYPE:	WEIGHT:
SPEC.:	DIM.:	SERIAL No.: 1
MFR.: Tronix Lighting	SUR.: 0.005*1	Shielding Angle:



LUMINANCE cd/(m2)		
G (DEG)	C0/180	C90/270
85	43033	413080
80	46628	225862
75	61292	165959
70	62253	131584
65	69410	114289
60	68896	101382
55	72522	94806
50	71586	88359
45	73614	85231

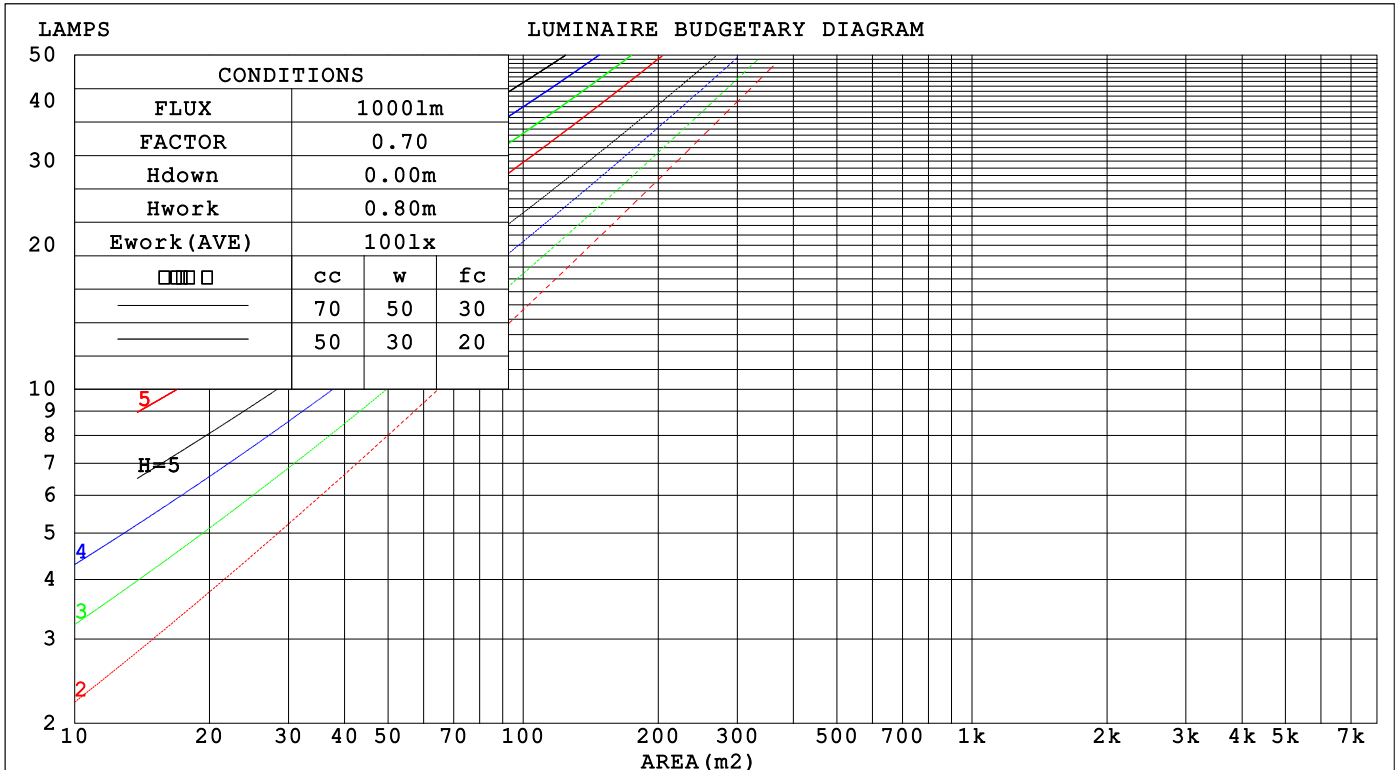
C Range: 0 - 360DEG
 C Interval: 22.5DEG
 Test Speed: HIGH
 Temperature:25.3DEG
 Operators:YSL
 Test Date:2021-06-30

Range: 0 - 180DEG
 Interval: 2.0DEG
 Test System:EVERFINE GO-2000B_V1 SYSTEM V2.00.450
 Humidity:65.0%
 Test Distance:5.749m [K=1.0000]
 Remarks:

CU AND LUMINAIRE BUDGETARY ESTIMATE DIAGRAM

Test:U:23.998V I:0.5818A P:13.962W PF:1.0000 Freq:0Hz		
Lamp Flux:2.93648x480 lm		
NAME: 127-161	TYPE:	WEIGHT:
SPEC.:	DIM.:	SERIAL No.: 1
MFR.: Tronix Lighting	SUR.: 0.005*1	Shielding Angle:

□cc	80%			70%			50%			30%			10%			0
□w	50%	30%	10%	50%	30%	10%	50%	30%	10%	50%	30%	10%	50%	30%	10%	0
□fc	20%			20%			20%			20%			20%			0
RCR	RCR:Room Cavity Ratio															
	Coefficients of Utilization(CU)															
0.0	1.18	1.18	1.18	1.15	1.15	1.15	1.09	1.09	1.09	1.03	1.03	1.03	.98	.98	.98	.96
1.0	.98	.93	.88	.96	.91	.86	.90	.86	.82	.86	.82	.79	.81	.78	.76	.73
2.0	.84	.76	.69	.82	.74	.68	.77	.71	.66	.73	.68	.63	.69	.65	.61	.59
3.0	.73	.63	.56	.71	.62	.55	.67	.60	.54	.64	.57	.52	.60	.55	.51	.48
4.0	.64	.54	.47	.62	.53	.46	.59	.51	.45	.56	.49	.44	.53	.48	.43	.40
5.0	.57	.47	.40	.55	.46	.39	.53	.45	.38	.50	.43	.38	.48	.42	.37	.34
6.0	.51	.41	.34	.50	.41	.34	.47	.39	.33	.45	.38	.33	.43	.37	.32	.30
7.0	.46	.37	.30	.45	.36	.30	.43	.35	.29	.41	.34	.29	.39	.33	.28	.26
8.0	.42	.33	.27	.41	.32	.26	.39	.31	.26	.38	.31	.26	.36	.30	.25	.23
9.0	.38	.30	.24	.37	.29	.24	.36	.28	.23	.35	.28	.23	.33	.27	.23	.21
10.0	.35	.27	.21	.35	.27	.21	.33	.26	.21	.32	.25	.21	.31	.25	.20	.19



C Range: 0 - 360DEG
 C Interval: 22.5DEG
 Test Speed: HIGH
 Temperature:25.3DEG
 Operators:YSL
 Test Date:2021-06-30

□ Range: 0 - 180DEG
 □ Interval: 2.0DEG
 Test System:EVERFINE GO-2000B_V1 SYSTEM V2.00.450
 Humidity:65.0%
 Test Distance:5.749m [K=1.0000]
 Remarks:

WEC AND CCEC

Test:U:23.998V I:0.5818A P:13.962W PF:1.0000 Freq:0Hz		
Lamp Flux:2.93648x480 lm		
NAME: 127-161	TYPE:	WEIGHT:
SPEC.:	DIM.:	SERIAL No.: 1
MFR.: Tronix Lighting	SUR.: 0.005*1	Shielding Angle:

<input type="checkbox"/> cc	80%			70%			50%			30%			10%			0
<input type="checkbox"/> w	50%	30%	10%	50%	30%	10%	50%	30%	10%	50%	30%	10%	50%	30%	10%	0
<input type="checkbox"/> fc	20%			20%			20%			20%			20%			0
RCR	RCR:Room Cavity Ratio						Wall Exitance Coefficients (WEC)									
0.0																
1.0	.397	.226	.071	.388	.221	.070	.372	.213	.068	.357	.206	.066	.343	.199	.064	
2.0	.344	.189	.058	.337	.185	.057	.322	.179	.056	.309	.173	.054	.297	.168	.053	
3.0	.306	.163	.049	.299	.160	.048	.286	.155	.047	.274	.150	.046	.263	.146	.045	
4.0	.275	.143	.042	.269	.141	.042	.257	.136	.041	.247	.132	.040	.237	.129	.039	
5.0	.250	.127	.037	.244	.125	.037	.234	.122	.036	.224	.118	.035	.215	.115	.035	
6.0	.228	.115	.033	.224	.113	.033	.214	.110	.032	.206	.107	.031	.198	.104	.031	
7.0	.211	.104	.030	.206	.103	.029	.198	.100	.029	.190	.097	.028	.183	.095	.028	
8.0	.195	.095	.027	.191	.094	.027	.184	.092	.026	.177	.089	.026	.170	.087	.025	
9.0	.182	.088	.025	.178	.087	.024	.171	.085	.024	.165	.083	.024	.159	.081	.023	
10.0	.170	.081	.023	.167	.081	.022	.161	.079	.022	.155	.077	.022	.149	.075	.022	

<input type="checkbox"/> cc	80%			70%			50%			30%			10%			0
<input type="checkbox"/> w	50%	30%	10%	50%	30%	10%	50%	30%	10%	50%	30%	10%	50%	30%	10%	0
<input type="checkbox"/> fc	20%			20%			20%			20%			20%			0
RCR	RCR:Room Cavity Ratio						Ceiling Cavity Exitance Coefficients (CCEC)									
0.0	.223	.223	.223	.191	.191	.191	.130	.130	.130	.075	.075	.075	.024	.024	.024	
1.0	.219	.188	.160	.188	.162	.138	.128	.111	.096	.074	.064	.056	.024	.021	.018	
2.0	.212	.165	.125	.182	.142	.108	.125	.098	.075	.072	.057	.044	.023	.018	.014	
3.0	.205	.148	.103	.176	.128	.089	.120	.089	.062	.070	.052	.037	.022	.017	.012	
4.0	.197	.135	.088	.169	.117	.076	.116	.081	.054	.067	.048	.032	.022	.016	.010	
5.0	.189	.125	.078	.162	.108	.068	.112	.076	.048	.065	.044	.028	.021	.014	.009	
6.0	.181	.117	.071	.156	.101	.062	.107	.071	.044	.062	.042	.026	.020	.014	.009	
7.0	.174	.110	.065	.149	.095	.057	.103	.067	.040	.060	.039	.024	.019	.013	.008	
8.0	.167	.104	.061	.144	.090	.054	.099	.063	.038	.058	.037	.023	.019	.012	.007	
9.0	.160	.099	.058	.138	.086	.051	.096	.061	.036	.056	.036	.022	.018	.012	.007	
10.0	.154	.095	.056	.133	.083	.049	.092	.058	.035	.054	.034	.021	.017	.011	.007	

C Range: 0 - 360DEG
 C Interval: 22.5DEG
 Test Speed: HIGH
 Temperature:25.3DEG
 Operators:YSL
 Test Date:2021-06-30

Range: 0 - 180DEG
 Interval: 2.0DEG
 Test System:EVERFINE GO-2000B_V1 SYSTEM V2.00.450
 Humidity:65.0%
 Test Distance:5.749m [K=1.0000]
 Remarks:

UGR(Unified Glare Rating) Table

Test:U:23.998V I:0.5818A P:13.962W PF:1.0000 Freq:0Hz										
Lamp Flux:2.93648x480 lm										
NAME: 127-161					TYPE:			WEIGHT:		
SPEC.:					DIM.:			SERIAL No.: 1		
MFR.: Tronix Lighting					SUR.: 0.005*1			Shielding Angle:		
ceiling/cavity	0.7	0.7	0.5	0.5	0.3	0.7	0.7	0.5	0.5	0.3
walls	0.5	0.3	0.5	0.3	0.3	0.5	0.3	0.5	0.3	0.3
working plane	0.2	0.2	0.2	0.2	0.2	0.2	0.2	0.2	0.2	0.2
Room dimensions	Viewed crosswise					Viewed endwise				
x = 2H y = 2H	26.0	27.6	26.4	27.9	28.2	27.6	29.2	27.9	29.5	29.8
3H	27.6	29.1	28.0	29.4	29.8	30.3	31.8	30.7	32.1	32.4
4H	28.3	29.7	28.7	30.0	30.4	31.8	33.2	32.2	33.6	33.9
6H	28.7	30.1	29.1	30.4	30.8	33.5	34.9	33.9	35.2	35.6
8H	28.9	30.2	29.3	30.5	30.9	34.4	35.7	34.9	36.1	36.5
12H	28.9	30.2	29.4	30.6	31.0	35.5	36.7	35.9	37.1	37.5
4H 2H	27.1	28.5	27.5	28.9	29.2	28.2	29.7	28.6	30.0	30.4
3H	29.0	30.2	29.4	30.6	31.0	31.2	32.5	31.6	32.8	33.2
4H	29.8	31.0	30.3	31.4	31.8	32.9	34.1	33.4	34.5	34.9
6H	30.5	31.5	31.0	32.0	32.5	34.9	35.9	35.3	36.3	36.8
8H	30.8	31.7	31.2	32.2	32.7	35.9	36.9	36.4	37.3	37.8
12H	30.9	31.8	31.4	32.3	32.8	37.1	38.0	37.6	38.5	39.0
8H 4H	30.9	31.9	31.4	32.3	32.8	33.4	34.3	33.8	34.8	35.3
6H	32.0	32.8	32.5	33.3	33.8	35.6	36.4	36.1	36.9	37.4
8H	32.5	33.2	33.0	33.7	34.3	36.9	37.6	37.4	38.1	38.7
12H	32.8	33.5	33.4	34.0	34.6	38.3	38.9	38.8	39.5	40.0
12H 4H	31.3	32.2	31.7	32.6	33.1	33.4	34.3	33.9	34.8	35.3
6H	32.6	33.3	33.1	33.8	34.4	35.7	36.5	36.3	37.0	37.5
8H	33.2	33.9	33.8	34.4	35.0	37.1	37.8	37.7	38.3	38.9
Variations with the observer position at spacings(CIE Pub.117):										
S = 1.0H	+ 0.1 / - 0.1					+ 0.1 / - 0.1				
1.5H	+ 0.2 / - 0.3					+ 0.2 / - 0.3				
2.0H	+ 0.2 / - 0.4					+ 0.2 / - 0.4				

CIE Pub.117, 1410 lm Total Lamp Luminous Flux Correct (8log(F/F0) = 1.2)
 Area: 0.005 m2

C Range: 0 - 360DEG
 C Interval: 22.5DEG
 Test Speed: HIGH
 Temperature:25.3DEG
 Operators:YSL
 Test Date:2021-06-30

Range: 0 - 180DEG
 Interval: 2.0DEG
 Test System:EVERFINE GO-2000B_V1 SYSTEM V2.00.450
 Humidity:65.0%
 Test Distance:5.749m [K=1.0000]
 Remarks:

UTILIZATION FACTORS TABLE

Test:U:23.998V I:0.5818A P:13.962W PF:1.0000 Freq:0Hz Lamp Flux:2.93648x480 lm		
NAME: 127-161	TYPE:	WEIGHT:
SPEC.:	DIM.:	SERIAL No.: 1
MFR.: Tronix Lighting	SUR.: 0.005*1	Shielding Angle:

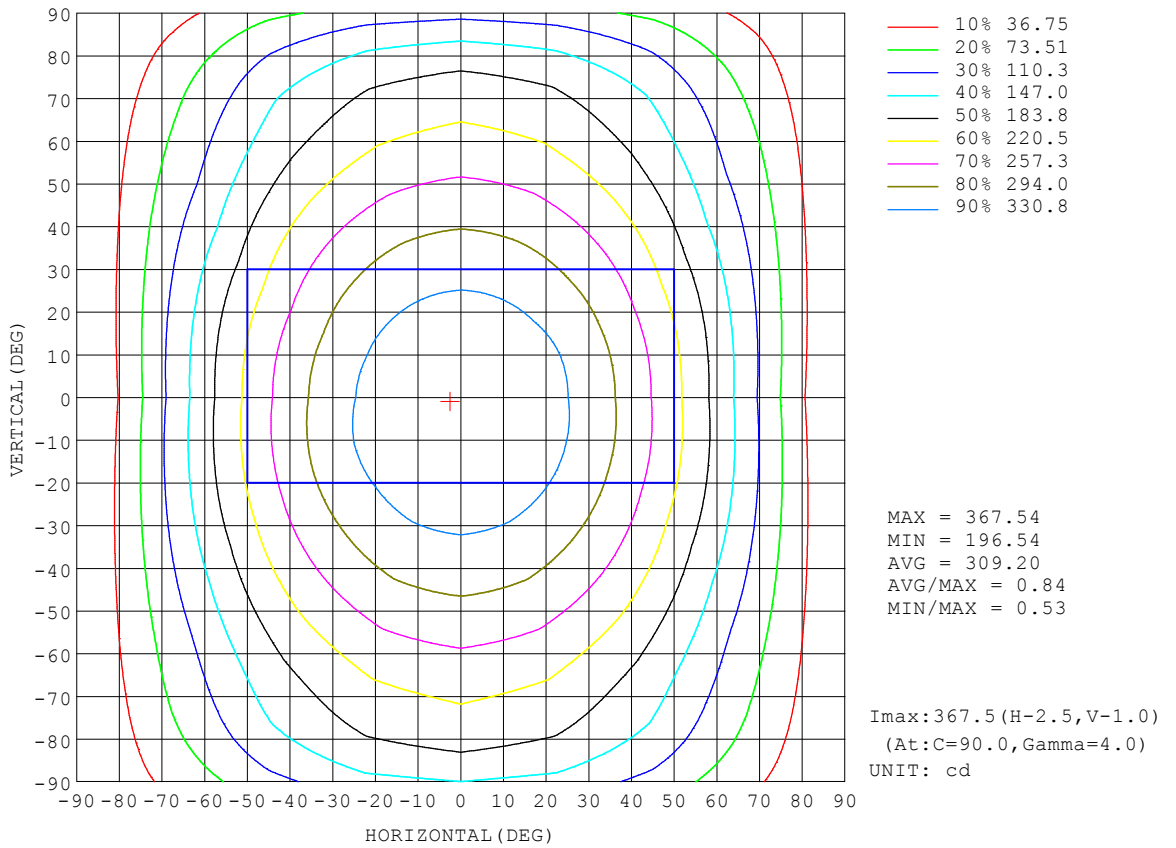
REFLECTANCE										
Ceiling	0.8	0.8	0.8	0.7	0.7	0.7	0.5	0.5	0.5	0
Walls	0.7	0.5	0.3	0.7	0.5	0.3	0.7	0.5	0.3	0
Working plane	0.2	0.2	0.2	0.2	0.2	0.2	0.2	0.2	0.2	0
ROOM INDEX	UTILIZATION FACTORS (PERCENT) $k(RI) \times RCR = 5$									
k = 0.60	52	39	32	51	39	32	49	38	31	25
0.80	61	48	40	60	48	40	58	47	39	32
1.00	69	56	48	68	56	48	65	57	47	39
1.25	76	64	55	74	63	55	71	61	54	45
1.50	81	69	61	79	68	60	75	66	59	50
2.00	88	78	70	86	76	69	82	74	67	58
2.50	93	83	75	90	81	74	86	78	72	62
3.00	96	87	80	94	86	79	89	82	77	66
4.00	101	93	87	98	91	85	93	87	82	72
5.00	104	97	92	101	95	90	95	91	86	75
ROOM INDEX	UF(total)									Direct
According to DIN EN 13032-2 2004			Suspended				SHRNOM = 1.25			

C Range: 0 - 360DEG
 C Interval: 22.5DEG
 Test Speed: HIGH
 Temperature:25.3DEG
 Operators:YSL
 Test Date:2021-06-30

Range: 0 - 180DEG
 Interval: 2.0DEG
 Test System:EVERFINE GO-2000B_V1 SYSTEM V2.00.450
 Humidity:65.0%
 Test Distance:5.749m [K=1.0000]
 Remarks:

ISOCANDELA DIAGRAM

Test:U:23.998V I:0.5818A P:13.962W PF:1.0000 Freq:0Hz Lamp Flux:2.93648x480 lm		
NAME: 127-161	TYPE:	WEIGHT:
SPEC.:	DIM.:	SERIAL No.: 1
MFR.: Tronix Lighting	SUR.: 0.005*1	Shielding Angle:



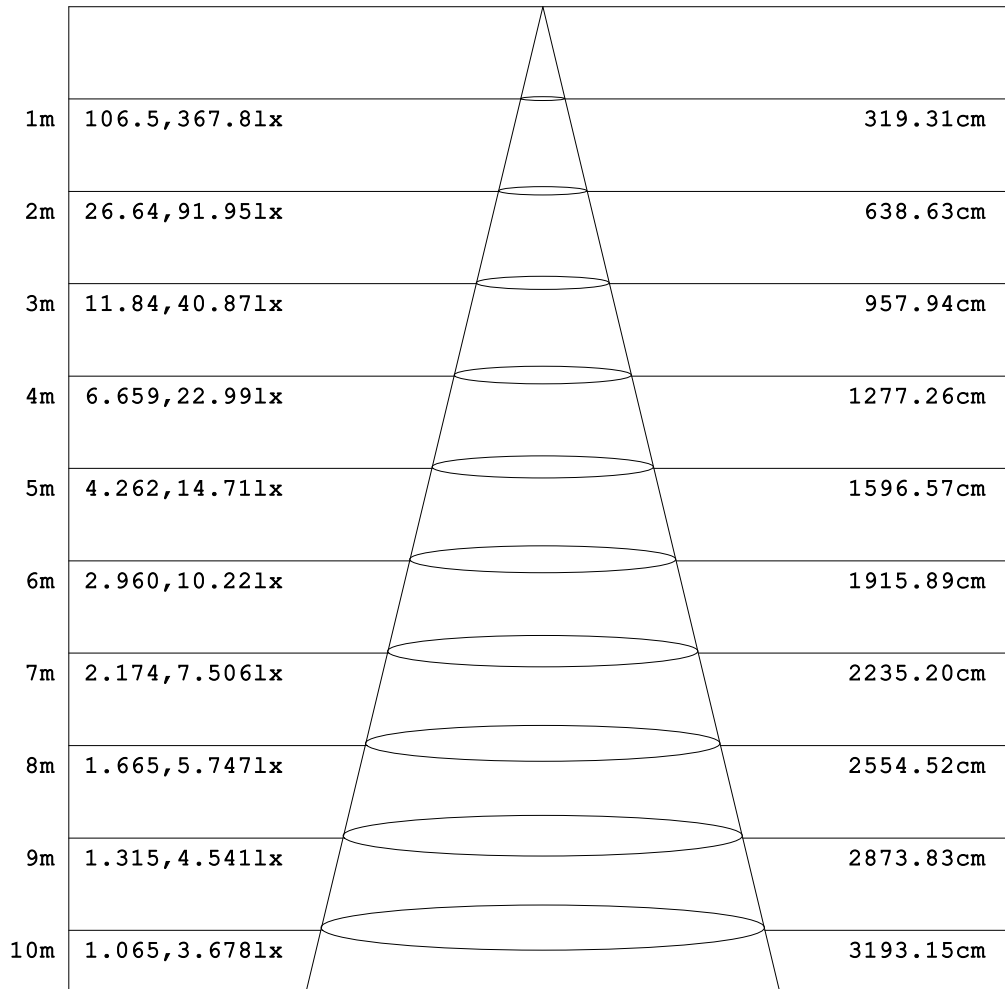
C Range: 0 - 360DEG
 C Interval: 22.5DEG
 Test Speed: HIGH
 Temperature:25.3DEG
 Operators:YSL
 Test Date:2021-06-30

Range: 0 - 180DEG
 Interval: 2.0DEG
 Test System:EVERFINE GO-2000B_V1 SYSTEM V2.00.450
 Humidity:65.0%
 Test Distance:5.749m [K=1.0000]
 Remarks:

AAI Figure

Test:U:23.998V I:0.5818A P:13.962W PF:1.0000 Freq:0Hz Lamp Flux:2.93648x480 lm		
NAME: 127-161	TYPE:	WEIGHT:
SPEC.:	DIM.:	SERIAL No.: 1
MFR.: Tronix Lighting	SUR.: 0.005*1	Shielding Angle:

Flux out:857.2 lm



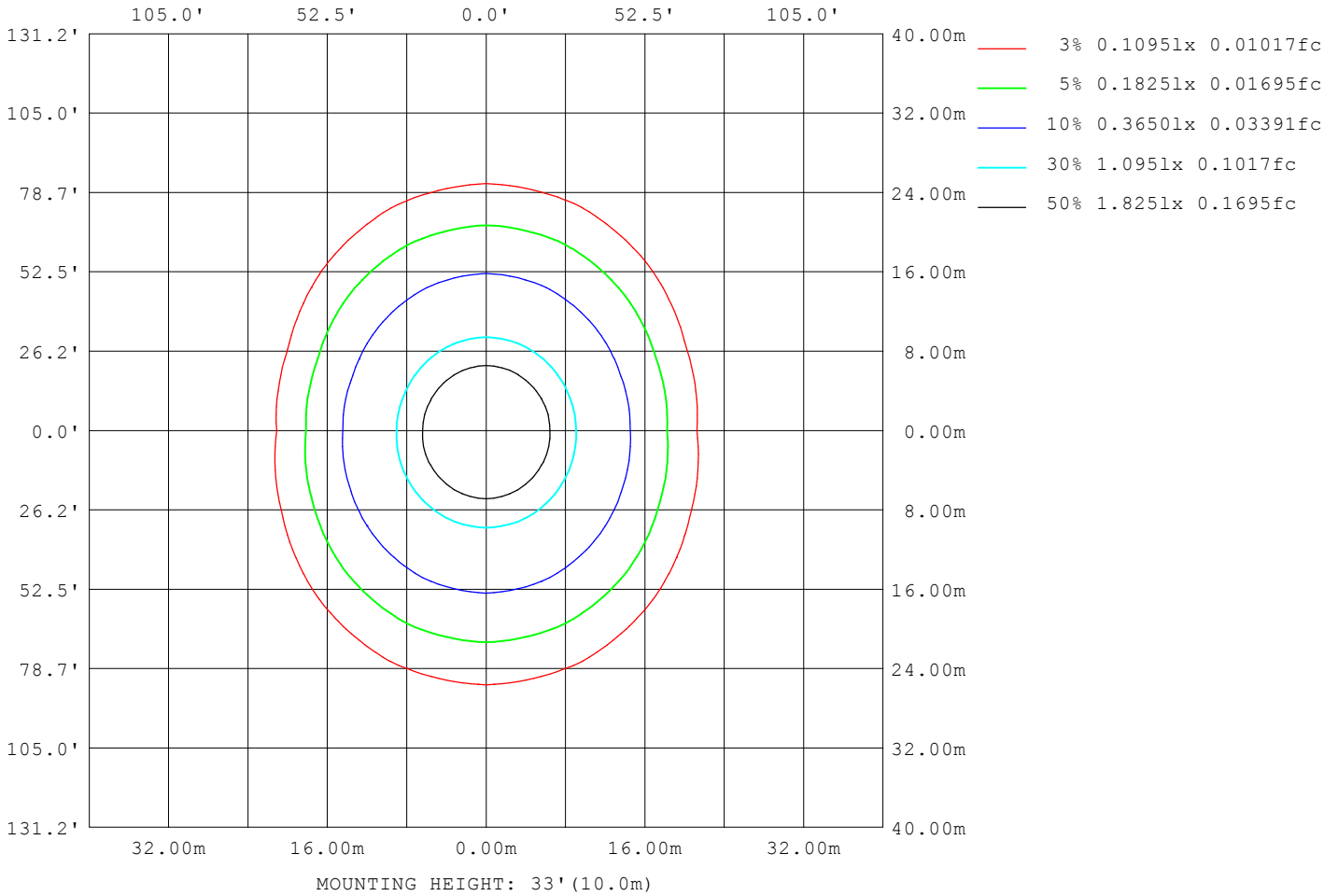
Note: The Curves indicate the illuminated area and the average illumination when the luminaire is at different distance.

C Range: 0 - 360DEG
 C Interval: 22.5DEG
 Test Speed: HIGH
 Temperature: 25.3DEG
 Operators: YSL
 Test Date: 2021-06-30

Range: 0 - 180DEG
 Interval: 2.0DEG
 Test System: EVERFINE GO-2000B_V1 SYSTEM V2.00.450
 Humidity: 65.0%
 Test Distance: 5.749m [K=1.0000]
 Remarks:

ISOLUX DIAGRAM

Test:U:23.998V I:0.5818A P:13.962W PF:1.0000 Freq:0Hz Lamp Flux:2.93648x480 lm		
NAME: 127-161	TYPE:	WEIGHT:
SPEC.:	DIM.:	SERIAL No.: 1
MFR.: Tronix Lighting	SUR.: 0.005*1	Shielding Angle:



C Range: 0 - 360DEG
 C Interval: 22.5DEG
 Test Speed: HIGH
 Temperature:25.3DEG
 Operators:YSL
 Test Date:2021-06-30

Range: 0 - 180DEG
 Interval: 2.0DEG
 Test System:EVERFINE GO-2000B_V1 SYSTEM V2.00.450
 Humidity:65.0%
 Test Distance:5.749m [K=1.0000]
 Remarks:

LED Avg.L Report

Test:U:23.998V I:0.5818A P:13.962W PF:1.0000 Freq:0Hz Lamp Flux:2.93648x480 lm		
NAME: 127-161	TYPE:	WEIGHT:
SPEC.:	DIM.:	SERIAL No.: 1
MFR.: Tronix Lighting	SUR.: 0.005*1	Shielding Angle:

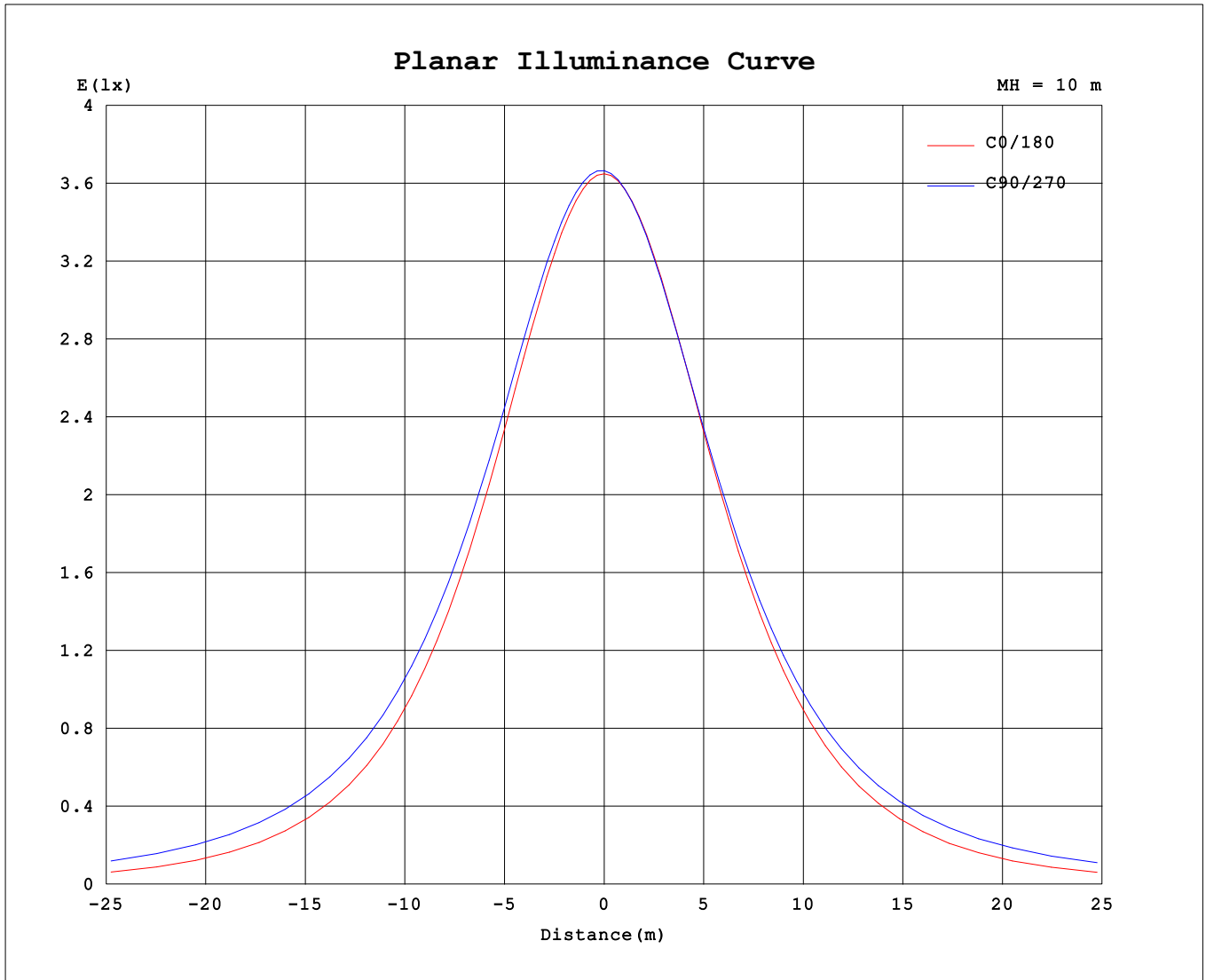
AvgL	cd/m2
L_0~180 (65) av	65793
L_0~180 (75) av	55340
L_0~180 (85) av	31235
L_90~270 (65) av	108220
L_90~270 (75) av	154947
L_90~270 (85) av	357911
L_45 (65) av	90725
L_45 (75) av	121396
L_45 (85) av	261014

Standard: GB/T 29293-2012

C Range: 0 - 360DEG
 C Interval: 22.5DEG
 Test Speed: HIGH
 Temperature:25.3DEG
 Operators:YSL
 Test Date:2021-06-30

Range: 0 - 180DEG
 Interval: 2.0DEG
 Test System:EVERFINE GO-2000B_V1 SYSTEM V2.00.450
 Humidity:65.0%
 Test Distance:5.749m [K=1.0000]
 Remarks:

Planar Illuminance Curve



C Range: 0 - 360DEG
 C Interval: 22.5DEG
 Test Speed: HIGH
 Temperature: 25.3DEG
 Operators: YSL
 Test Date: 2021-06-30

Range: 0 - 180DEG
 Interval: 2.0DEG
 Test System: EVERFINE GO-2000B_V1 SYSTEM V2.00.450
 Humidity: 65.0%
 Test Distance: 5.749m [K=1.0000]
 Remarks:

LUMINOUS DISTRIBUTION INTENSITY DATA

Test:U:23.998V I:0.5818A P:13.962W PF:1.0000 Freq:0Hz Lamp Flux:2.93648x480 lm		
NAME: 127-161	TYPE:	WEIGHT:
SPEC.:	DIM.:	SERIAL No.: 1
MFR.: Tronix Lighting	SUR.: 0.005*1	Shielding Angle:

Table--1

UNIT: cd

C (DEG) □ (DEG)	0	22.5	45	67.5	90	112.5	135	157.5	180	202.5	225	247.5	270	292.5	315	337.5			
0	366	366	366	366	366	366	366	366	366	366	366	366	366	366	366	366			
5	365	366	366	367	367	367	366	366	365	365	364	364	364	364	364	365			
10	361	362	363	364	365	364	363	362	360	359	359	358	358	358	359	360			
15	356	358	360	361	361	361	359	357	355	353	353	352	352	352	353	354			
20	345	348	351	353	354	353	350	347	343	341	341	341	341	341	342	342			
25	335	339	343	346	347	346	342	338	334	331	332	332	333	332	332	333			
30	317	322	328	333	335	333	327	321	316	313	315	317	319	318	315	315			
35	303	309	317	324	326	324	316	308	301	299	302	306	309	307	303	301			
40	279	287	297	308	312	308	297	285	277	275	281	289	292	289	283	277			
45	261	270	284	297	301	296	283	268	259	257	266	276	280	277	268	260			
50	231	242	261	278	284	278	260	240	228	229	243	256	262	257	245	232			
55	209	222	245	265	272	265	244	220	206	208	226	243	250	244	229	211			
60	173	191	221	245	253	245	220	189	170	176	201	223	232	225	204	180			
65	147	169	204	232	241	231	203	167	144	154	186	211	222	213	189	158			
70	107	136	181	214	225	213	180	135	104	122	164	195	206	196	168	126			
75	79.6	115	167	203	215	203	167	115	77.0	102	152	182	193	183	155	107			
80	40.6	88.1	148	184	196	184	148	89.1	38.4	78.1	128	156	167	157	130	82.9			
85	18.8	74.0	131	168	180	168	132	75.3	17.1	60.9	106	134	143	134	108	64.5			
90	0.66	43.8	98.0	135	147	135	98.9	45.0	0.67	25.9	64.8	89.0	98.0	88.2	64.9	28.4			
95	0.78	17.7	68.2	105	117	106	69.2	18.9	0.72	1.22	8.74	31.4	41.9	30.3	9.78	1.29			
100	1.14	1.51	18.0	51.2	62.6	52.6	19.6	1.79	1.01	1.34	1.95	2.46	2.65	2.48	2.00	1.36			
105	1.42	1.65	3.24	17.7	27.6	19.2	3.65	1.86	1.26	1.54	2.07	2.48	2.63	2.50	2.11	1.54			
110	1.85	1.96	2.43	3.23	4.14	3.42	2.56	2.10	1.64	1.85	2.29	2.64	2.78	2.69	2.35	1.85			
115	2.14	2.19	2.59	2.86	3.06	2.91	2.68	2.30	1.91	2.06	2.44	2.76	2.90	2.82	2.52	2.08			
120	2.55	2.56	2.86	3.07	3.15	3.10	2.88	2.60	2.31	2.38	2.66	2.93	3.06	3.01	2.76	2.41			
125	2.81	2.82	3.04	3.21	3.27	3.23	3.04	2.82	2.56	2.59	2.80	3.04	3.15	3.12	2.92	2.64			
130	3.17	3.16	3.30	3.42	3.46	3.41	3.27	3.14	2.91	2.89	3.03	3.22	3.30	3.30	3.16	2.97			
135	3.37	3.36	3.48	3.56	3.58	3.54	3.42	3.31	3.12	3.08	3.18	3.33	3.40	3.42	3.32	3.18			
140	3.66	3.66	3.74	3.77	3.76	3.74	3.65	3.57	3.41	3.34	3.40	3.51	3.53	3.60	3.55	3.48			
145	3.84	3.84	3.91	3.91	3.88	3.88	3.77	3.74	3.60	3.51	3.55	3.64	3.63	3.72	3.71	3.67			
150	4.09	4.10	4.12	4.10	4.08	4.05	3.98	3.98	3.87	3.77	3.76	3.83	3.79	3.89	3.94	3.94			
155	4.25	4.28	4.26	4.22	4.21	4.19	4.12	4.14	4.06	3.95	3.92	3.96	3.93	4.01	4.10	4.12			
160	4.50	4.52	4.48	4.39	4.42	4.37	4.34	4.39	4.35	4.24	4.17	4.18	4.19	4.22	4.34	4.41			
165	4.67	4.68	4.63	4.54	4.59	4.50	4.49	4.57	4.54	4.45	4.36	4.35	4.38	4.37	4.51	4.60			
170	4.93	4.93	4.88	4.78	4.80	4.73	4.77	4.86	4.84	4.77	4.68	4.64	4.65	4.64	4.78	4.90			
175	5.11	5.08	5.03	4.94	4.96	4.91	4.97	5.06	5.02	4.97	4.89	4.84	4.84	4.83	4.97	5.08			
180	5.27	5.22	5.17	5.11	5.14	5.09	5.21	5.28	5.26	5.22	5.16	5.11	5.14	5.10	5.21	5.30			

C Range: 0 - 360DEG
 C Interval: 22.5DEG
 Test Speed: HIGH
 Temperature:25.3DEG
 Operators:YSL
 Test Date:2021-06-30

□ Range: 0 - 180DEG
 □ Interval: 2.0DEG
 Test System:EVERFINE GO-2000B_V1 SYSTEM V2.00.450
 Humidity:65.0%
 Test Distance:5.749m [K=1.0000]
 Remarks: