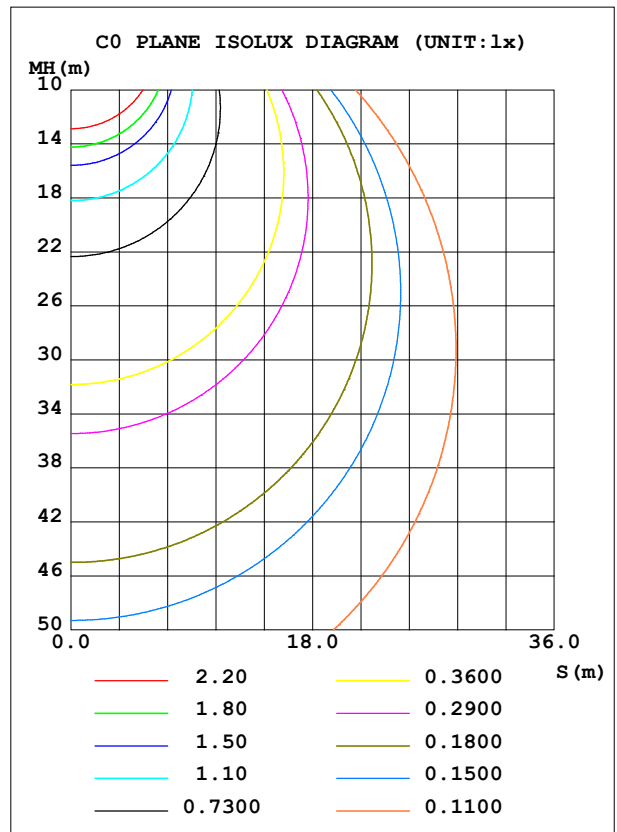
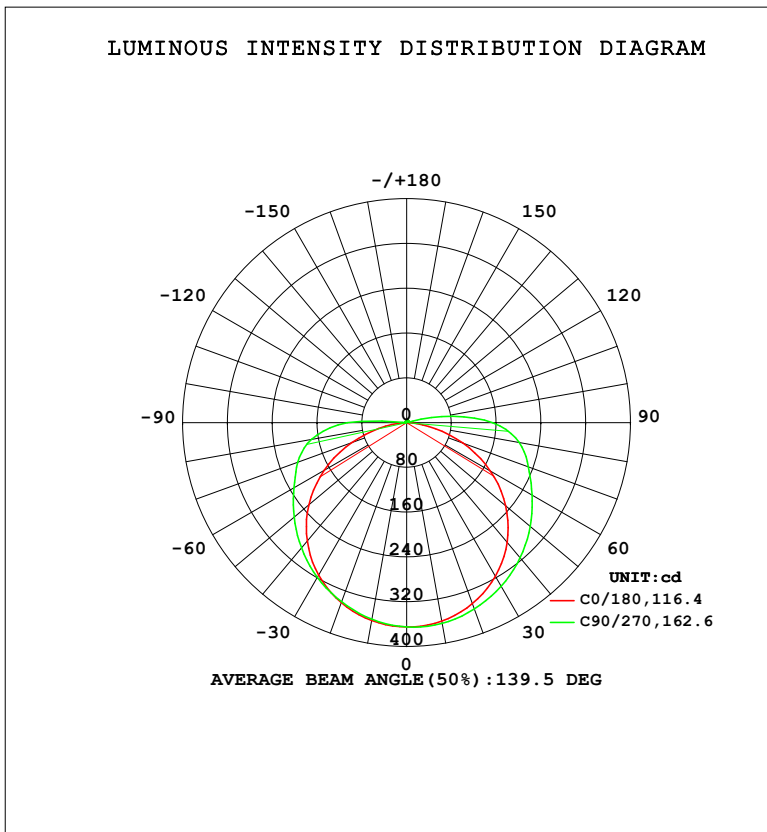


LUMINAIRE PHOTOMETRIC TEST REPORT

Test:U:23.998V I:0.5657A P:13.576W PF:1.0000 Freq:0Hz Lamp Flux:2.97068x480 lm		
NAME: 127-160	TYPE:	WEIGHT:
SPEC.:	DIM.:	SERIAL No.: 1
MFR.: Tronix Lighting	SUR.: 0.005*1	Shielding Angle:

DATA OF LAMP		PHOTOMETRIC DATA			
MODEL		Imax (cd)	365.8	S/MH (C0/180)	1.28
NOMINAL POWER (W)	15	LOR (%)	100.0	S/MH (C90/270)	1.31
RATED VOLTAGE (V)	24	TOTAL FLUX (lm)	1425.9	<input type="checkbox"/> UP, DN (C0-180)	3.1,49.8
NOMINAL FLUX (lm)	2.97068	CIE CLASS	DIRECT	<input type="checkbox"/> UP, DN (C180-360)	1.3,45.9
LAMPS INSIDE	480	<input type="checkbox"/> up (%)	4.4	CIBSE SHR NOM	1.50
TEST VOLTAGE (V)	24	<input type="checkbox"/> down (%)	95.6	CIBSE SHR MAX	1.55



C Range: 0 - 360DEG  
 C Interval: 22.5DEG  
 Test Speed: HIGH  
 Temperature: 25.3DEG  
 Operators: YSL  
 Test Date: 2021-06-30

Range: 0 - 180DEG  
 Interval: 2.0DEG  
 Test System: EVERFINE GO-2000B\_V1 SYSTEM V2.00.450  
 Humidity: 65.0%  
 Test Distance: 5.749m [K=1.0000]  
 Remarks:

ZONAL FLUX DIAGRAM

ZONAL FLUX DIAGRAM:

°	C0	C45	C90	C135	C180	C225	C270	C315	°	□ zone	□ total	%lum,lamp
10	360.1	362.9	364.1	362.5	359.1	357.3	356.8	357.7	0- 10	34.61	34.61	2.43,2.43
20	344.1	350.7	354.0	350.1	342.2	339.6	340.5	340.7	10- 20	99.96	134.6	9.44,9.44
30	317.2	329.1	337.5	328.3	314.6	313.9	319.2	315.9	20- 30	154.4	289.0	20.3,20.3
40	279.3	300.3	315.3	299.6	276.5	281.1	292.3	284.0	30- 40	192.5	481.5	33.8,33.8
50	231.0	264.8	288.3	264.6	228.0	242.5	262.4	246.1	40- 50	210.7	692.2	48.5,48.5
60	172.7	225.0	258.9	225.5	170.0	201.4	232.3	205.9	50- 60	208.4	900.6	63.2,63.2
70	106.6	185.7	231.4	187.2	104.3	164.1	207.1	169.4	60- 70	188.8	1089	76.4,76.4
80	40.35	153.6	203.7	155.9	38.71	130.4	172.4	135.2	70- 80	158.9	1248	87.5,87.5
90	0.6677	101.8	153.6	104.8	0.7001	69.09	106.0	71.80	80- 90	115.4	1364	95.6,95.6
100	1.159	17.00	64.29	19.61	1.025	2.018	2.613	2.059	90-100	42.02	1406	98.6,98.6
110	1.869	2.489	3.908	2.489	1.652	2.346	2.876	2.430	100-110	6.190	1412	99,99
120	2.572	2.880	3.146	2.857	2.311	2.717	3.130	2.825	110-120	2.588	1415	99.2,99.2
130	3.182	3.311	3.441	3.247	2.902	3.074	3.346	3.208	120-130	2.693	1417	99.4,99.4
140	3.673	3.749	3.735	3.635	3.405	3.429	3.574	3.591	130-140	2.635	1420	99.6,99.6
150	4.097	4.153	4.044	3.966	3.865	3.778	3.807	3.966	140-150	2.371	1422	99.7,99.7
160	4.504	4.517	4.445	4.344	4.336	4.173	4.201	4.356	150-160	1.919	1424	99.9,99.9
170	4.931	4.898	4.787	4.783	4.827	4.673	4.646	4.784	160-170	1.289	1425	100,100
180	5.260	5.162	5.127	5.202	5.258	5.160	5.127	5.202	170-180	0.4713	1426	100,100
DEG	LUMINOUS INTENSITY:cd									UNIT:lm		

Conical surface Flux(90deg): 607.08 lm

%lum = 42.6%

%lamp = 42.6%

Conical surface Flux(120deg): 900.62 lm

%lum = 63.2%

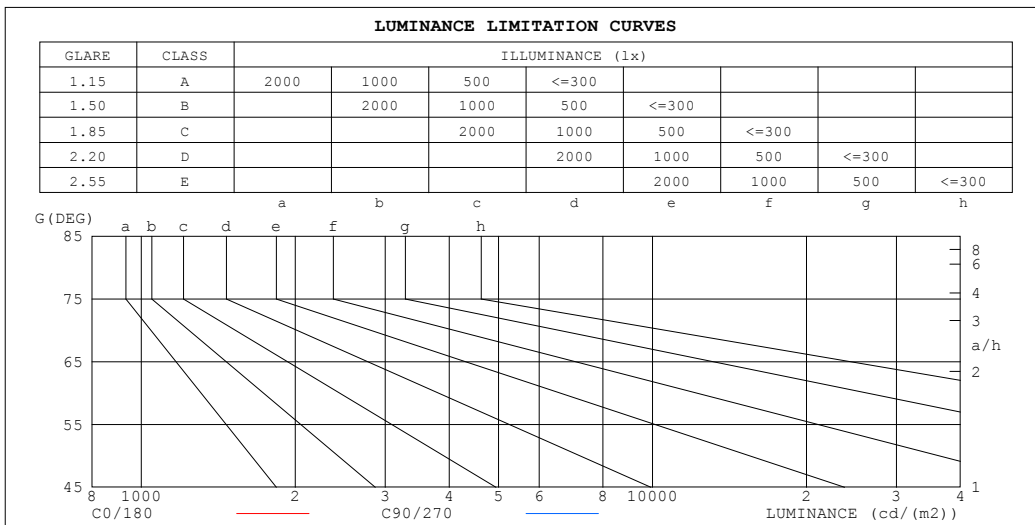
%lamp = 63.2%

C Range: 0 - 360DEG  
 C Interval: 22.5DEG  
 Test Speed: HIGH  
 Temperature:25.3DEG  
 Operators:YSL  
 Test Date:2021-06-30

□ Range: 0 - 180DEG  
 □ Interval: 2.0DEG  
 Test System:EVERFINE GO-2000B\_V1 SYSTEM V2.00.450  
 Humidity:65.0%  
 Test Distance:5.749m [K=1.0000]  
 Remarks:

**LUMINANCE LIMITATION CURVES**

Test:U:23.998V I:0.5657A P:13.576W PF:1.0000 Freq:0Hz		
Lamp Flux:2.97068x480 lm		
NAME: 127-160	TYPE:	WEIGHT:
SPEC.:	DIM.:	SERIAL No.: 1
MFR.: Tronix Lighting	SUR.: 0.005*1	Shielding Angle:



LUMINANCE cd/(m2)		
G (DEG)	C0/180	C90/270
85	42792	431534
80	46390	234973
75	61192	171586
70	62207	135476
65	69435	117229
60	68969	103700
55	72668	96626
50	71740	89837
45	73747	86390

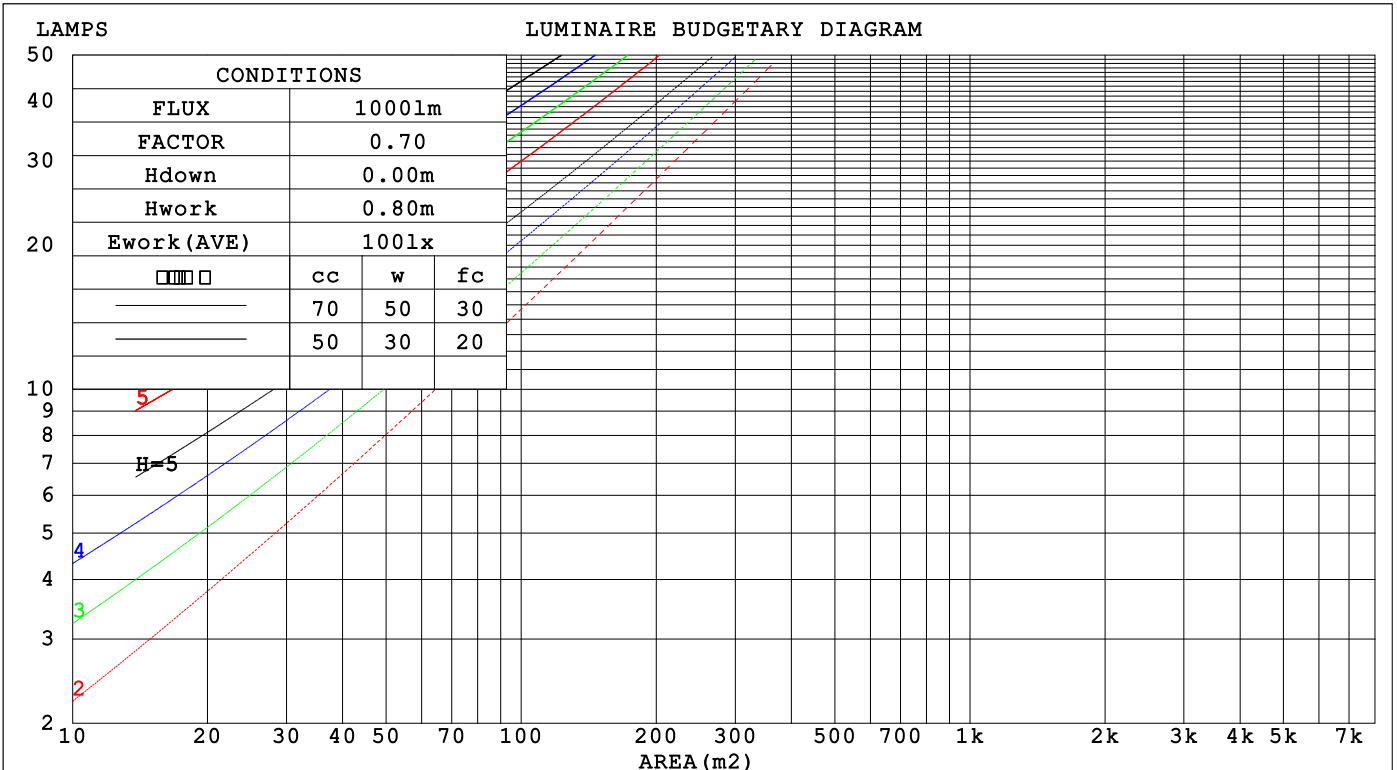
C Range: 0 - 360DEG  
 C Interval: 22.5DEG  
 Test Speed: HIGH  
 Temperature:25.3DEG  
 Operators:YSL  
 Test Date:2021-06-30

Range: 0 - 180DEG  
 Interval: 2.0DEG  
 Test System:EVERFINE GO-2000B\_V1 SYSTEM V2.00.450  
 Humidity:65.0%  
 Test Distance:5.749m [K=1.0000]  
 Remarks:

**CU AND LUMINAIRE BUDGETARY ESTIMATE DIAGRAM**

Test:U:23.998V I:0.5657A P:13.576W PF:1.0000 Freq:0Hz		
Lamp Flux:2.97068x480 lm		
NAME: 127-160	TYPE:	WEIGHT:
SPEC.:	DIM.:	SERIAL No.: 1
MFR.: Tronix Lighting	SUR.: 0.005*1	Shielding Angle:

□cc	80%			70%			50%			30%			10%			0
□w	50%	30%	10%	50%	30%	10%	50%	30%	10%	50%	30%	10%	50%	30%	10%	0
□fc	20%			20%			20%			20%			20%			0
RCR	RCR:Room Cavity Ratio						Coefficients of Utilization(CU)									
0.0	1.18	1.18	1.18	1.15	1.15	1.15	1.09	1.09	1.09	1.03	1.03	1.03	.98	.98	.98	.96
1.0	.98	.93	.88	.95	.90	.86	.90	.86	.82	.85	.82	.79	.81	.78	.76	.73
2.0	.84	.76	.69	.81	.74	.67	.77	.71	.65	.73	.68	.63	.69	.65	.61	.58
3.0	.72	.63	.56	.71	.62	.55	.67	.59	.53	.63	.57	.52	.60	.55	.50	.48
4.0	.64	.54	.46	.62	.53	.46	.59	.51	.45	.56	.49	.43	.53	.47	.42	.40
5.0	.56	.47	.39	.55	.46	.39	.52	.44	.38	.50	.43	.37	.47	.41	.36	.34
6.0	.51	.41	.34	.49	.40	.34	.47	.39	.33	.45	.38	.32	.43	.37	.32	.29
7.0	.46	.36	.30	.45	.36	.30	.43	.35	.29	.41	.34	.28	.39	.33	.28	.26
8.0	.42	.33	.26	.41	.32	.26	.39	.31	.26	.37	.30	.25	.36	.30	.25	.23
9.0	.38	.29	.24	.37	.29	.23	.36	.28	.23	.34	.28	.23	.33	.27	.22	.20
10.0	.35	.27	.21	.34	.26	.21	.33	.26	.21	.32	.25	.20	.31	.25	.20	.18



C Range: 0 - 360DEG  
 C Interval: 22.5DEG  
 Test Speed: HIGH  
 Temperature:25.3DEG  
 Operators:YSL  
 Test Date:2021-06-30

□ Range: 0 - 180DEG  
 □ Interval: 2.0DEG  
 Test System:EVERFINE GO-2000B\_V1 SYSTEM V2.00.450  
 Humidity:65.0%  
 Test Distance:5.749m [K=1.0000]  
 Remarks:

**WEC AND CCEC**

Test:U:23.998V I:0.5657A P:13.576W PF:1.0000 Freq:0Hz								
Lamp Flux:2.97068x480 lm								
NAME: 127-160			TYPE:			WEIGHT:		
SPEC.:			DIM.:			SERIAL No.: 1		
MFR.: Tronix Lighting			SUR.: 0.005*1			Shielding Angle:		

<input type="checkbox"/> cc	80%			70%			50%			30%			10%			0
<input type="checkbox"/> w	50%	30%	10%	50%	30%	10%	50%	30%	10%	50%	30%	10%	50%	30%	10%	0
<input type="checkbox"/> fc	20%			20%			20%			20%			20%			0
RCR	RCR:Room Cavity Ratio						Wall Exitance Coefficients (WEC)									
0.0																
1.0	.400	.228	.072	.392	.223	.071	.376	.215	.069	.361	.208	.067	.347	.201	.065	
2.0	.346	.190	.058	.339	.187	.057	.324	.180	.056	.311	.174	.055	.299	.169	.053	
3.0	.307	.164	.049	.300	.161	.048	.287	.156	.047	.275	.151	.046	.264	.146	.045	
4.0	.276	.143	.042	.270	.141	.042	.258	.137	.041	.248	.133	.040	.238	.129	.039	
5.0	.250	.128	.037	.245	.126	.037	.235	.122	.036	.225	.119	.035	.216	.115	.035	
6.0	.229	.115	.033	.224	.113	.033	.215	.110	.032	.206	.107	.032	.198	.104	.031	
7.0	.211	.104	.030	.207	.103	.029	.198	.100	.029	.190	.098	.028	.183	.095	.028	
8.0	.195	.096	.027	.192	.094	.027	.184	.092	.026	.177	.090	.026	.170	.087	.025	
9.0	.182	.088	.025	.178	.087	.024	.172	.085	.024	.165	.083	.024	.159	.081	.023	
10.0	.170	.082	.023	.167	.081	.022	.161	.079	.022	.155	.077	.022	.149	.075	.022	

<input type="checkbox"/> cc	80%			70%			50%			30%			10%			0
<input type="checkbox"/> w	50%	30%	10%	50%	30%	10%	50%	30%	10%	50%	30%	10%	50%	30%	10%	0
<input type="checkbox"/> fc	20%			20%			20%			20%			20%			0
RCR	RCR:Room Cavity Ratio						Ceiling Cavity Exitance Coefficients (CCEC)									
0.0	.224	.224	.224	.191	.191	.191	.130	.130	.130	.075	.075	.075	.024	.024	.024	
1.0	.220	.189	.161	.188	.162	.138	.129	.111	.096	.074	.065	.056	.024	.021	.018	
2.0	.213	.165	.125	.183	.142	.108	.125	.098	.075	.072	.057	.044	.023	.019	.014	
3.0	.206	.148	.103	.176	.128	.089	.121	.089	.063	.070	.052	.037	.022	.017	.012	
4.0	.198	.136	.088	.169	.117	.077	.117	.082	.054	.067	.048	.032	.022	.016	.011	
5.0	.190	.126	.078	.163	.109	.068	.112	.076	.048	.065	.045	.029	.021	.015	.009	
6.0	.182	.117	.071	.156	.102	.062	.108	.071	.044	.063	.042	.026	.020	.014	.009	
7.0	.174	.111	.066	.150	.096	.057	.104	.067	.041	.060	.040	.024	.019	.013	.008	
8.0	.167	.105	.062	.144	.091	.054	.100	.064	.038	.058	.038	.023	.019	.012	.008	
9.0	.161	.100	.059	.139	.087	.051	.096	.061	.036	.056	.036	.022	.018	.012	.007	
10.0	.155	.096	.056	.133	.083	.049	.093	.058	.035	.054	.035	.021	.018	.011	.007	

C Range: 0 - 360DEG  
 C Interval: 22.5DEG  
 Test Speed: HIGH  
 Temperature:25.3DEG  
 Operators:YSL  
 Test Date:2021-06-30

Range: 0 - 180DEG  
 Interval: 2.0DEG  
 Test System:EVERFINE GO-2000B\_V1 SYSTEM V2.00.450  
 Humidity:65.0%  
 Test Distance:5.749m [K=1.0000]  
 Remarks:

**UGR(Unified Glare Rating) Table**

Test:U:23.998V I:0.5657A P:13.576W PF:1.0000 Freq:0Hz										
Lamp Flux:2.97068x480 lm										
NAME: 127-160				TYPE:				WEIGHT:		
SPEC.:				DIM.:				SERIAL No.: 1		
MFR.: Tronix Lighting				SUR.: 0.005*1				Shielding Angle:		
ceiling/cavity	0.7	0.7	0.5	0.5	0.3	0.7	0.7	0.5	0.5	0.3
walls	0.5	0.3	0.5	0.3	0.3	0.5	0.3	0.5	0.3	0.3
working plane	0.2	0.2	0.2	0.2	0.2	0.2	0.2	0.2	0.2	0.2
Room dimensions	Viewed crosswise					Viewed endwise				
x = 2H y = 2H	26.0	27.6	26.4	27.9	28.2	27.6	29.2	28.0	29.5	29.8
3H	27.6	29.1	28.0	29.4	29.8	30.4	31.9	30.7	32.2	32.5
4H	28.3	29.7	28.7	30.0	30.4	31.9	33.4	32.3	33.7	34.1
6H	28.7	30.1	29.1	30.4	30.8	33.7	35.0	34.1	35.4	35.7
8H	28.9	30.2	29.3	30.5	30.9	34.6	35.9	35.0	36.3	36.7
12H	28.9	30.2	29.4	30.6	31.0	35.6	36.9	36.1	37.3	37.7
4H 2H	27.1	28.5	27.5	28.9	29.2	28.3	29.7	28.7	30.1	30.4
3H	29.0	30.3	29.4	30.7	31.1	31.3	32.5	31.7	32.9	33.3
4H	29.9	31.0	30.3	31.4	31.9	33.1	34.2	33.5	34.6	35.1
6H	30.5	31.6	31.0	32.0	32.5	35.0	36.0	35.5	36.5	37.0
8H	30.8	31.8	31.3	32.2	32.7	36.1	37.0	36.5	37.5	38.0
12H	31.0	31.9	31.5	32.3	32.8	37.2	38.2	37.7	38.6	39.1
8H 4H	31.0	31.9	31.4	32.4	32.9	33.5	34.5	34.0	34.9	35.4
6H	32.1	32.9	32.6	33.4	33.9	35.7	36.6	36.3	37.1	37.6
8H	32.5	33.3	33.1	33.8	34.4	37.0	37.8	37.6	38.3	38.8
12H	32.9	33.6	33.5	34.1	34.7	38.5	39.1	39.0	39.7	40.2
12H 4H	31.3	32.2	31.8	32.7	33.2	33.5	34.4	34.0	34.9	35.4
6H	32.7	33.4	33.2	33.9	34.5	35.9	36.6	36.4	37.2	37.7
8H	33.3	34.0	33.9	34.5	35.1	37.3	37.9	37.8	38.5	39.0
Variations with the observer position at spacings(CIE Pub.117):										
S = 1.0H	+ 0.1 / - 0.1					+ 0.1 / - 0.1				
1.5H	+ 0.2 / - 0.3					+ 0.2 / - 0.3				
2.0H	+ 0.2 / - 0.4					+ 0.2 / - 0.4				

CIE Pub.117, 1426 lm Total Lamp Luminous Flux Correct (8log(F/F0) = 1.2)  
 Area: 0.005 m2

C Range: 0 - 360DEG  
 C Interval: 22.5DEG  
 Test Speed: HIGH  
 Temperature:25.3DEG  
 Operators:YSL  
 Test Date:2021-06-30

Range: 0 - 180DEG  
 Interval: 2.0DEG  
 Test System:EVERFINE GO-2000B\_V1 SYSTEM V2.00.450  
 Humidity:65.0%  
 Test Distance:5.749m [K=1.0000]  
 Remarks:

**UTILIZATION FACTORS TABLE**

Test:U:23.998V I:0.5657A P:13.576W PF:1.0000 Freq:0Hz Lamp Flux:2.97068x480 lm		
NAME: 127-160	TYPE:	WEIGHT:
SPEC.:	DIM.:	SERIAL No.: 1
MFR.: Tronix Lighting	SUR.: 0.005*1	Shielding Angle:

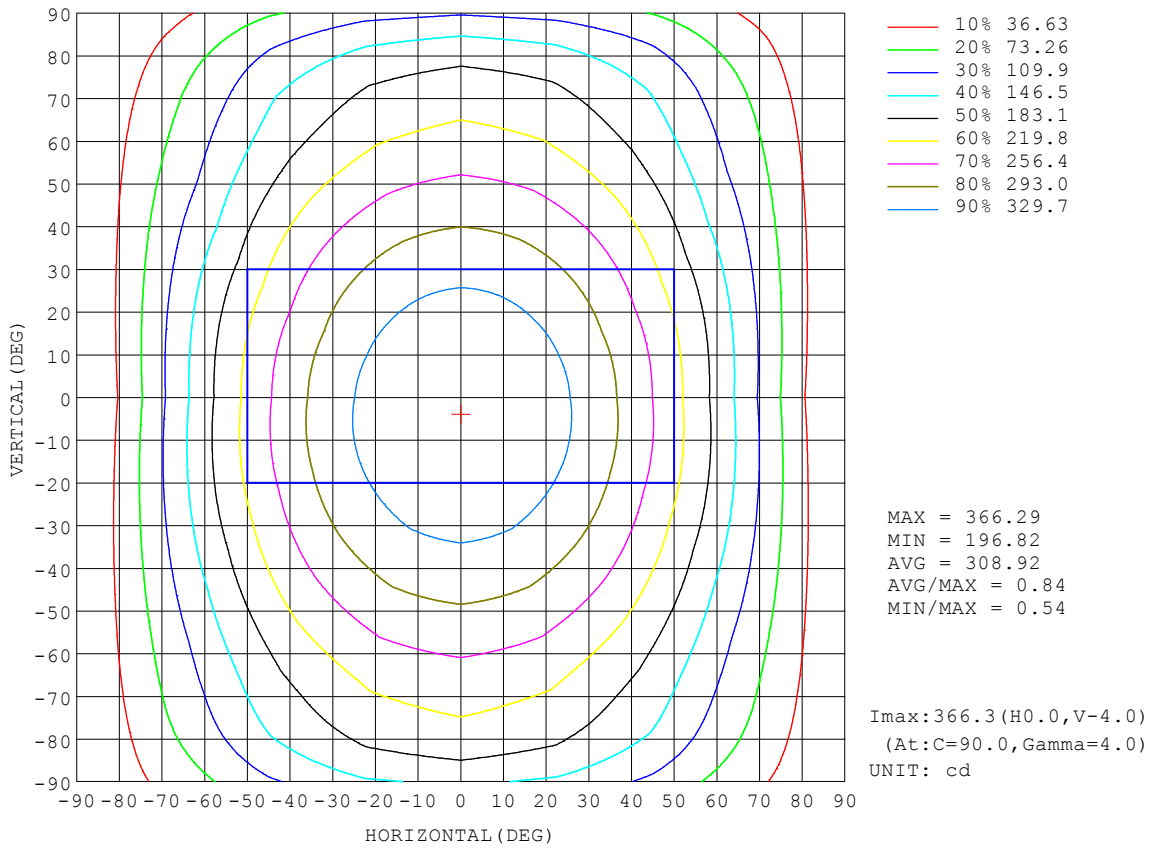
REFLECTANCE										
Ceiling	0.8	0.8	0.8	0.7	0.7	0.7	0.5	0.5	0.5	0
Walls	0.7	0.5	0.3	0.7	0.5	0.3	0.7	0.5	0.3	0
Working plane	0.2	0.2	0.2	0.2	0.2	0.2	0.2	0.2	0.2	0
ROOM INDEX	UTILIZATION FACTORS (PERCENT) $k(RI) \times RCR = 5$									
k = 0.60	51	39	32	51	39	31	49	38	31	24
0.80	61	48	40	60	47	40	58	46	39	32
1.00	69	56	48	67	55	47	65	57	47	39
1.25	76	63	55	74	62	54	71	61	54	45
1.50	81	69	60	79	68	60	75	66	59	50
2.00	88	77	69	86	76	68	82	73	67	57
2.50	92	82	75	90	81	74	85	78	72	62
3.00	96	87	80	93	85	79	89	82	76	66
4.00	101	93	87	98	91	85	93	87	82	71
5.00	104	97	91	101	95	90	95	90	86	75
ROOM INDEX	UF(total)									Direct
According to DIN EN 13032-2 2004			Suspended				SHRNOM = 1.25			

C Range: 0 - 360DEG  
 C Interval: 22.5DEG  
 Test Speed: HIGH  
 Temperature:25.3DEG  
 Operators:YSL  
 Test Date:2021-06-30

Range: 0 - 180DEG  
 Interval: 2.0DEG  
 Test System:EVERFINE GO-2000B\_V1 SYSTEM V2.00.450  
 Humidity:65.0%  
 Test Distance:5.749m [K=1.0000]  
 Remarks:

**ISOCANDELA DIAGRAM**

Test:U:23.998V I:0.5657A P:13.576W PF:1.0000 Freq:0Hz Lamp Flux:2.97068x480 lm		
NAME: 127-160	TYPE:	WEIGHT:
SPEC.:	DIM.:	SERIAL No.: 1
MFR.: Tronix Lighting	SUR.: 0.005*1	Shielding Angle:



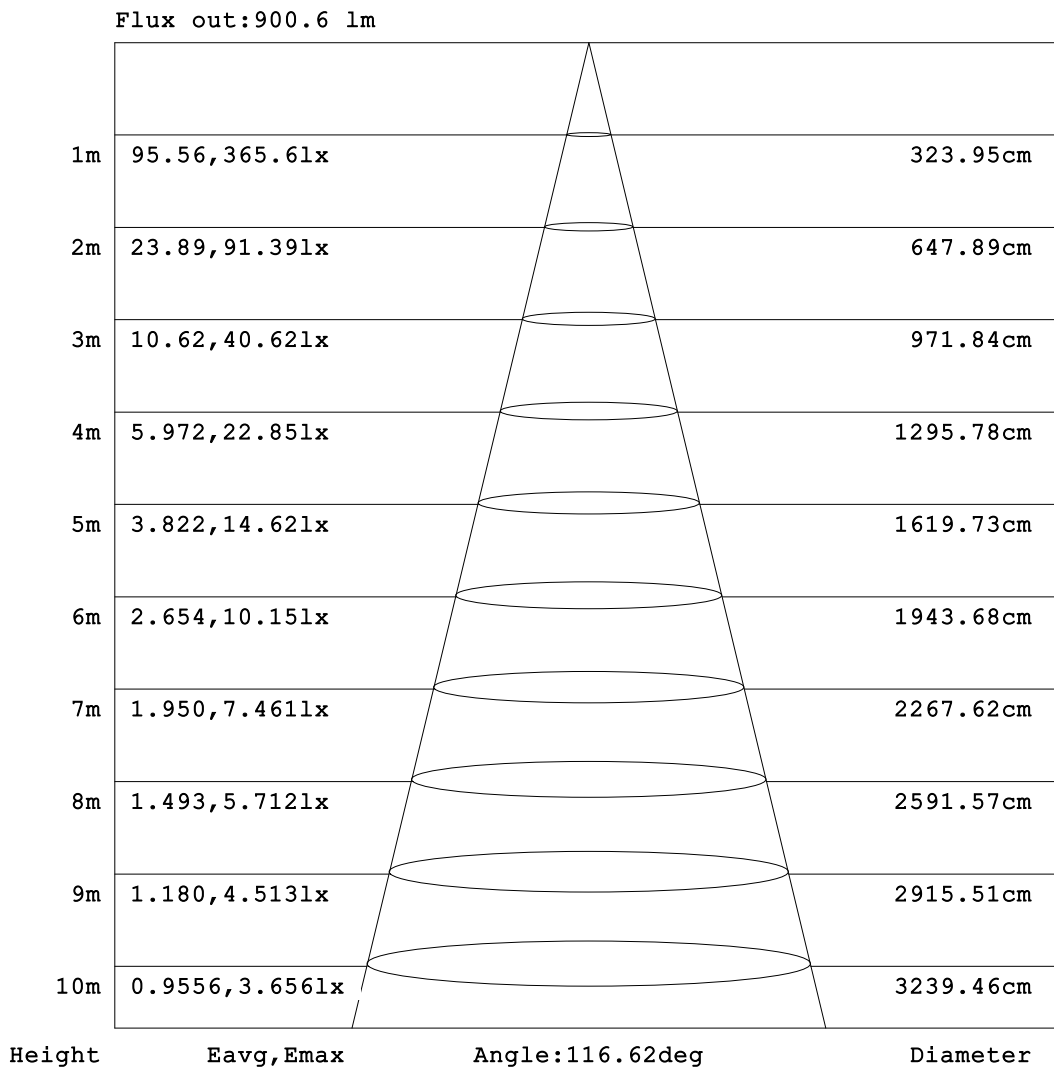
C Range: 0 - 360DEG  
 C Interval: 22.5DEG  
 Test Speed: HIGH  
 Temperature:25.3DEG  
 Operators:YSL  
 Test Date:2021-06-30

Range: 0 - 180DEG  
 Interval: 2.0DEG  
 Test System:EVERFINE GO-2000B\_V1 SYSTEM V2.00.450  
 Humidity:65.0%  
 Test Distance:5.749m [K=1.0000]  
 Remarks:



**AAI Figure**

Test:U:23.998V I:0.5657A P:13.576W PF:1.0000 Freq:0Hz Lamp Flux:2.97068x480 lm		
NAME: 127-160	TYPE:	WEIGHT:
SPEC.:	DIM.:	SERIAL No.: 1
MFR.: Tronix Lighting	SUR.: 0.005*1	Shielding Angle:



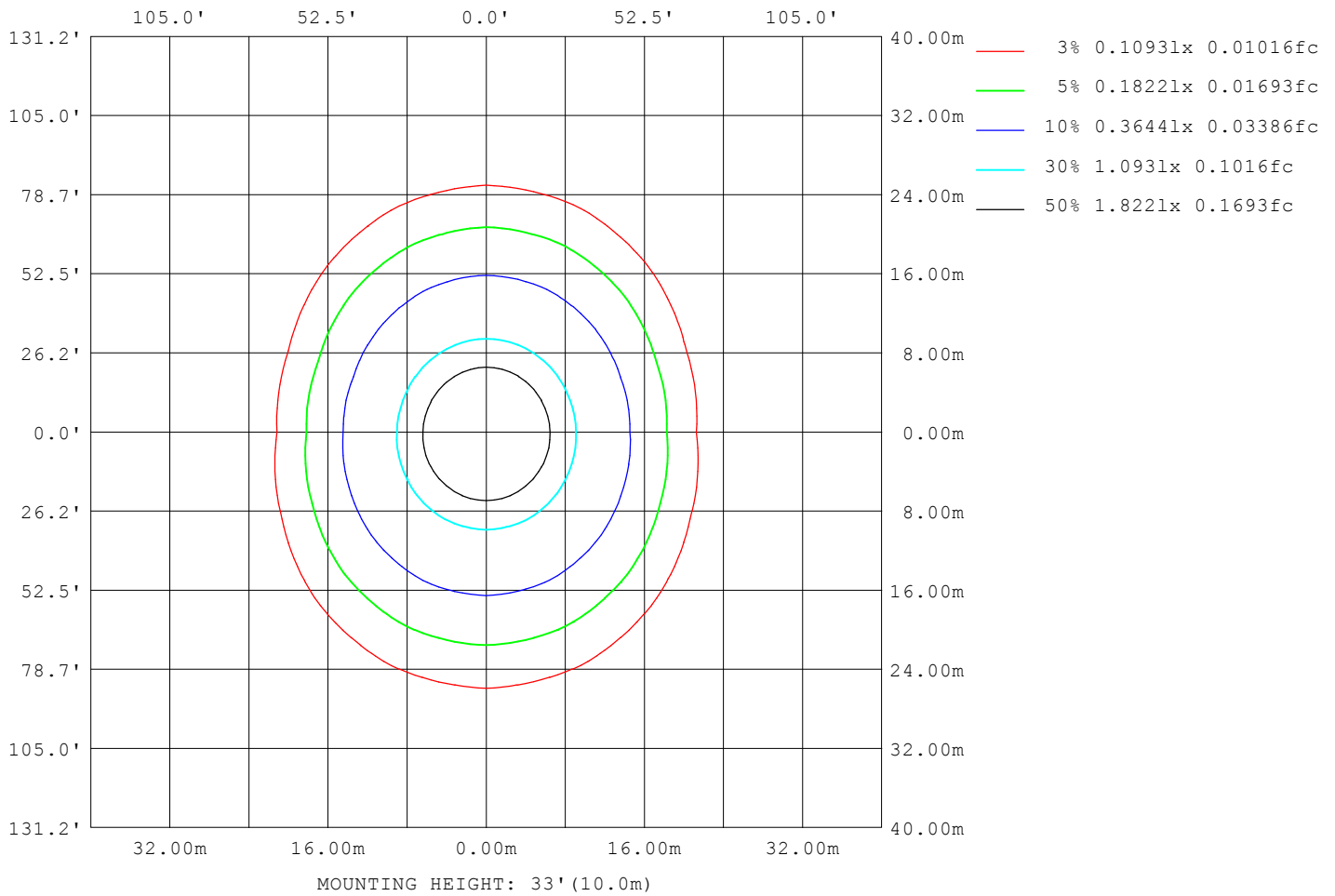
Note: The Curves indicate the illuminated area and the average illumination when the luminaire is at different distance.

C Range: 0 - 360DEG  
 C Interval: 22.5DEG  
 Test Speed: HIGH  
 Temperature: 25.3DEG  
 Operators: YSL  
 Test Date: 2021-06-30

Range: 0 - 180DEG  
 Interval: 2.0DEG  
 Test System: EVERFINE GO-2000B\_V1 SYSTEM V2.00.450  
 Humidity: 65.0%  
 Test Distance: 5.749m [K=1.0000]  
 Remarks:

**ISOLUX DIAGRAM**

Test:U:23.998V I:0.5657A P:13.576W PF:1.0000 Freq:0Hz Lamp Flux:2.97068x480 lm		
NAME: 127-160	TYPE:	WEIGHT:
SPEC.:	DIM.:	SERIAL No.: 1
MFR.: Tronix Lighting	SUR.: 0.005*1	Shielding Angle:



C Range: 0 - 360DEG  
 C Interval: 22.5DEG  
 Test Speed: HIGH  
 Temperature:25.3DEG  
 Operators:YSL  
 Test Date:2021-06-30

Range: 0 - 180DEG  
 Interval: 2.0DEG  
 Test System:EVERFINE GO-2000B\_V1 SYSTEM V2.00.450  
 Humidity:65.0%  
 Test Distance:5.749m [K=1.0000]  
 Remarks:

**LED Avg.L Report**

Test:U:23.998V I:0.5657A P:13.576W PF:1.0000 Freq:0Hz Lamp Flux:2.97068x480 lm		
NAME: 127-160	TYPE:	WEIGHT:
SPEC.:	DIM.:	SERIAL No.: 1
MFR.: Tronix Lighting	SUR.: 0.005*1	Shielding Angle:

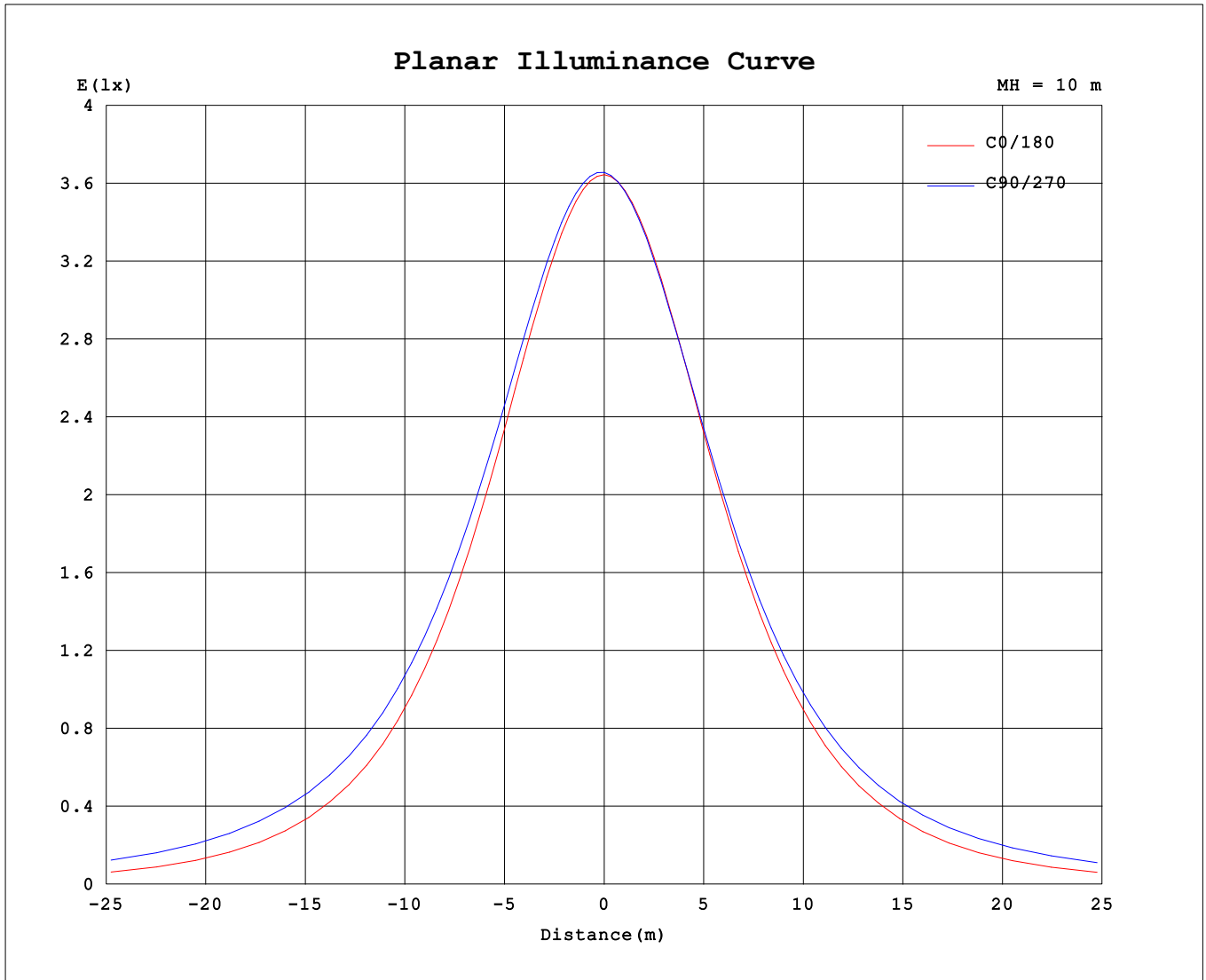
AvgL	cd/m2
L_0~180 (65) av	65821
L_0~180 (75) av	55306
L_0~180 (85) av	31562
L_90~270 (65) av	109756
L_90~270 (75) av	158895
L_90~270 (85) av	375109
L_45 (65) av	92169
L_45 (75) av	124393
L_45 (85) av	274142

Standard: GB/T 29293-2012

C Range: 0 - 360DEG  
 C Interval: 22.5DEG  
 Test Speed: HIGH  
 Temperature:25.3DEG  
 Operators:YSL  
 Test Date:2021-06-30

Range: 0 - 180DEG  
 Interval: 2.0DEG  
 Test System:EVERFINE GO-2000B\_V1 SYSTEM V2.00.450  
 Humidity:65.0%  
 Test Distance:5.749m [K=1.0000]  
 Remarks:

**Planar Illuminance Curve**



C Range: 0 - 360DEG  
 C Interval: 22.5DEG  
 Test Speed: HIGH  
 Temperature:25.3DEG  
 Operators:YSL  
 Test Date:2021-06-30

Range: 0 - 180DEG  
 Interval: 2.0DEG  
 Test System:EVERFINE GO-2000B\_V1 SYSTEM V2.00.450  
 Humidity:65.0%  
 Test Distance:5.749m [K=1.0000]  
 Remarks:

LUMINOUS DISTRIBUTION INTENSITY DATA

Test:U:23.998V I:0.5657A P:13.576W PF:1.0000 Freq:0Hz Lamp Flux:2.97068x480 lm		
NAME: 127-160	TYPE:	WEIGHT:
SPEC.:	DIM.:	SERIAL No.: 1
MFR.: Tronix Lighting	SUR.: 0.005*1	Shielding Angle:

Table--1

UNIT: cd

C (DEG) \ □ (DEG)	0	22.5	45	67.5	90	112.5	135	157.5	180	202.5	225	247.5	270	292.5	315	337.5			
0	365	365	365	365	365	365	365	365	365	365	365	365	365	365	365	365			
5	364	365	365	366	366	366	365	365	364	363	363	363	363	363	363	364			
10	360	362	363	364	364	364	363	361	359	358	357	357	357	357	358	359			
15	355	357	359	361	361	361	359	356	354	352	351	351	351	351	352	353			
20	344	348	351	353	354	353	350	346	342	340	340	340	340	340	341	342			
25	335	339	343	347	348	347	342	337	332	330	330	332	333	332	332	332			
30	317	323	329	335	338	335	328	321	315	312	314	317	319	318	316	314			
35	303	310	318	327	329	326	318	308	301	298	302	306	309	307	304	301			
40	279	288	300	312	315	311	300	286	276	274	281	288	292	290	284	278			
45	261	271	287	300	305	300	286	270	258	257	266	276	281	277	269	260			
50	231	244	265	282	288	282	265	243	228	228	242	256	262	258	246	233			
55	209	225	249	270	277	270	249	223	206	208	226	243	250	245	230	213			
60	173	193	225	250	259	251	226	193	170	176	201	223	232	226	206	181			
65	147	172	209	237	247	238	210	172	144	154	186	211	222	214	190	159			
70	107	139	186	220	231	220	187	140	104	122	164	196	207	198	169	128			
75	79.3	118	172	209	222	210	174	120	77.2	103	153	184	195	186	158	109			
80	40.3	91.0	154	191	204	192	156	93.7	38.7	78.6	130	161	172	163	135	85.5			
85	18.7	77.0	137	175	188	176	139	80.1	17.5	62.6	110	139	150	141	114	68.5			
90	0.67	45.8	102	140	154	142	105	48.4	0.70	27.9	69.1	95.5	106	96.4	71.8	32.0			
95	0.80	17.9	69.7	108	122	111	73.0	19.7	0.73	1.22	8.10	33.1	44.4	31.5	8.04	1.38			
100	1.16	1.74	17.0	52.0	64.3	54.5	19.6	1.59	1.02	1.38	2.02	2.47	2.61	2.48	2.06	1.41			
105	1.43	1.70	3.25	16.3	27.1	18.5	2.95	1.73	1.27	1.58	2.14	2.57	2.72	2.59	2.19	1.59			
110	1.87	2.00	2.49	3.42	3.91	3.31	2.49	2.02	1.65	1.88	2.35	2.72	2.88	2.78	2.43	1.90			
115	2.16	2.23	2.62	2.92	3.16	2.89	2.64	2.26	1.92	2.09	2.50	2.82	2.97	2.90	2.59	2.12			
120	2.57	2.60	2.88	3.07	3.15	3.08	2.86	2.62	2.31	2.40	2.72	2.99	3.13	3.08	2.83	2.45			
125	2.83	2.84	3.05	3.21	3.26	3.21	3.01	2.84	2.56	2.61	2.85	3.09	3.21	3.18	2.98	2.67			
130	3.18	3.19	3.31	3.42	3.44	3.39	3.25	3.14	2.90	2.91	3.07	3.26	3.35	3.35	3.21	3.00			
135	3.39	3.41	3.48	3.56	3.56	3.52	3.40	3.32	3.11	3.09	3.21	3.38	3.44	3.47	3.36	3.21			
140	3.67	3.71	3.75	3.75	3.74	3.72	3.63	3.58	3.40	3.35	3.43	3.55	3.57	3.64	3.59	3.50			
145	3.85	3.89	3.92	3.89	3.86	3.86	3.76	3.74	3.59	3.51	3.56	3.66	3.65	3.76	3.74	3.69			
150	4.10	4.15	4.15	4.10	4.04	4.04	3.97	3.99	3.86	3.77	3.78	3.85	3.81	3.92	3.97	3.96			
155	4.26	4.32	4.30	4.23	4.20	4.17	4.10	4.16	4.05	3.95	3.93	3.97	3.95	4.03	4.12	4.14			
160	4.50	4.56	4.52	4.42	4.45	4.35	4.34	4.41	4.34	4.24	4.17	4.19	4.20	4.23	4.36	4.41			
165	4.67	4.72	4.66	4.56	4.61	4.48	4.51	4.60	4.53	4.44	4.36	4.35	4.39	4.38	4.52	4.60			
170	4.93	4.95	4.90	4.80	4.79	4.73	4.78	4.89	4.83	4.76	4.67	4.63	4.65	4.63	4.78	4.89			
175	5.10	5.08	5.06	4.97	4.94	4.90	4.96	5.07	5.02	4.96	4.88	4.83	4.84	4.83	4.97	5.07			
180	5.26	5.21	5.16	5.11	5.13	5.09	5.20	5.30	5.26	5.22	5.16	5.10	5.13	5.09	5.20	5.30			

C Range: 0 - 360DEG  
 C Interval: 22.5DEG  
 Test Speed: HIGH  
 Temperature:25.3DEG  
 Operators:YSL  
 Test Date:2021-06-30

□ Range: 0 - 180DEG  
 □ Interval: 2.0DEG  
 Test System:EVERFINE GO-2000B\_V1 SYSTEM V2.00.450  
 Humidity:65.0%  
 Test Distance:5.749m [K=1.0000]  
 Remarks: