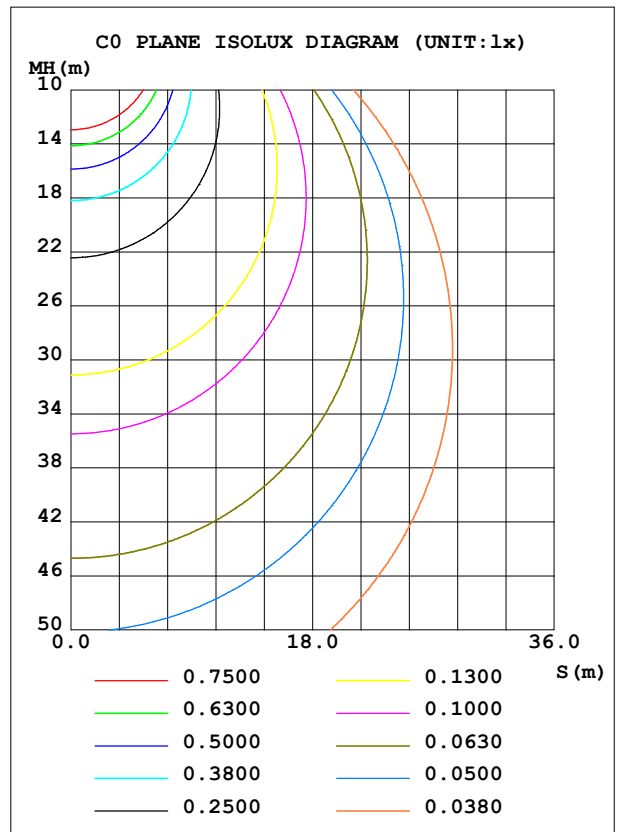
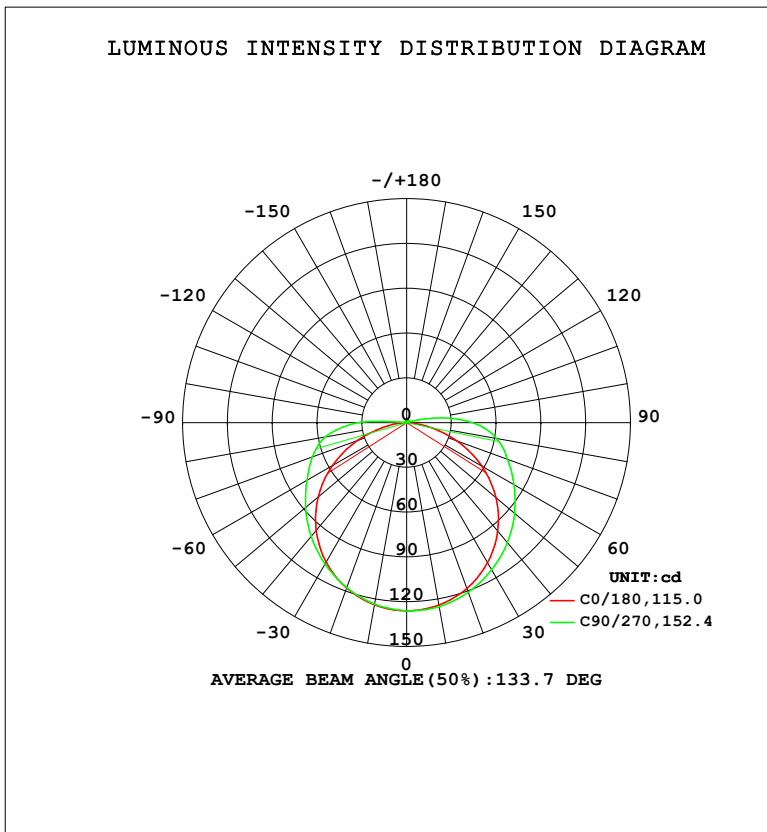


LUMINAIRE PHOTOMETRIC TEST REPORT

Test:U:23.998V I:0.2284A P:5.0000W PF:1.0000 Freq:0Hz Lamp Flux:0.97759x480 lm		
NAME: 127-158	TYPE:	WEIGHT:
SPEC.:	DIM.:	SERIAL No.: 1
MFR.: Tronix Lighting	SUR.: 0.005*1	Shielding Angle:

DATA OF LAMP		PHOTOMETRIC DATA				Eff: 93.85 lm/W
MODEL		I _{max} (cd)	126.1	S/MH (C0/180)		1.27
NOMINAL POWER (W)	5	LOR (%)	100.0	S/MH (C90/270)		1.30
RATED VOLTAGE (V)	24	TOTAL FLUX (lm)	469.24	<input type="checkbox"/> UP, DN (C0-180)		2.8,49.2
NOMINAL FLUX (lm)	0.97759	CIE CLASS	DIRECT	<input type="checkbox"/> UP, DN (C180-360)		1.3,46.7
LAMPS INSIDE	480	<input type="checkbox"/> up (%)	4.1	CIBSE SHR NOM		1.50
TEST VOLTAGE (V)	24	<input type="checkbox"/> down (%)	95.9	CIBSE SHR MAX		1.50



C Range: 0 - 360DEG
 C Interval: 22.5DEG
 Test Speed: HIGH
 Temperature: 25.3DEG
 Operators: YSL
 Test Date: 2021-06-30

Range: 0 - 180DEG
 Interval: 2.0DEG
 Test System: EVERFINE GO-2000B_V1 SYSTEM V2.00.450
 Humidity: 65.0%
 Test Distance: 5.749m [K=1.0000]
 Remarks:

ZONAL FLUX DIAGRAM

ZONAL FLUX DIAGRAM:

°	C0	C45	C90	C135	C180	C225	C270	C315	°	□ zone	□ total	%lum,lamp
10	124.1	124.7	125.1	124.8	123.9	123.6	123.4	123.6	0- 10	11.94	11.94	2.54,2.54
20	118.2	119.8	120.9	119.8	117.9	117.5	117.6	117.5	10- 20	34.41	46.35	9.88,9.88
30	108.4	111.5	113.9	111.4	108.0	108.1	109.4	108.2	20- 30	52.88	99.23	21.1,21.1
40	94.96	100.2	105.0	100.2	94.37	96.00	99.58	96.39	30- 40	65.38	164.6	35.1,35.1
50	78.09	86.93	94.39	86.93	77.40	82.07	88.45	82.69	40- 50	70.81	235.4	50.2,50.2
60	58.16	72.22	82.97	72.33	57.33	67.20	77.19	68.07	50- 60	68.99	304.4	64.9,64.9
70	35.83	57.67	72.05	57.98	35.01	53.39	67.35	54.57	60- 70	61.20	365.6	77.9,77.9
80	13.62	45.43	61.04	45.81	12.93	41.15	55.41	42.41	70- 80	49.88	415.5	88.5,88.5
90	0.2148	28.52	44.04	29.01	0.1954	21.29	32.85	21.35	80- 90	34.66	450.2	95.9,95.9
100	0.3737	5.002	18.25	5.736	0.3289	0.6139	1.342	0.6184	90-100	12.41	462.6	98.6,98.6
110	0.6214	0.8353	2.009	0.8372	0.5457	0.7400	0.8955	0.7539	100-110	1.999	464.6	99,99
120	0.8596	0.9443	1.064	0.9414	0.7696	0.8638	0.9975	0.9013	110-120	0.8658	465.4	99.2,99.2
130	1.069	1.106	1.161	1.086	0.9721	0.9970	1.090	1.046	120-130	0.8860	466.3	99.4,99.4
140	1.243	1.266	1.263	1.229	1.151	1.135	1.180	1.196	130-140	0.8791	467.2	99.6,99.6
150	1.391	1.408	1.382	1.353	1.313	1.264	1.273	1.334	140-150	0.7992	468.0	99.7,99.7
160	1.541	1.539	1.520	1.479	1.479	1.411	1.420	1.477	150-160	0.6511	468.6	99.9,99.9
170	1.691	1.670	1.646	1.633	1.651	1.594	1.584	1.636	160-170	0.4392	469.1	100,100
180	1.808	1.768	1.760	1.786	1.803	1.770	1.755	1.781	170-180	0.1613	469.2	100,100
DEG	LUMINOUS INTENSITY:cd									UNIT:lm		

Conical surface Flux(90deg): 206.92 lm

%lum = 44.1%

%lamp = 44.1%

Conical surface Flux(120deg): 304.41 lm

%lum = 64.9%

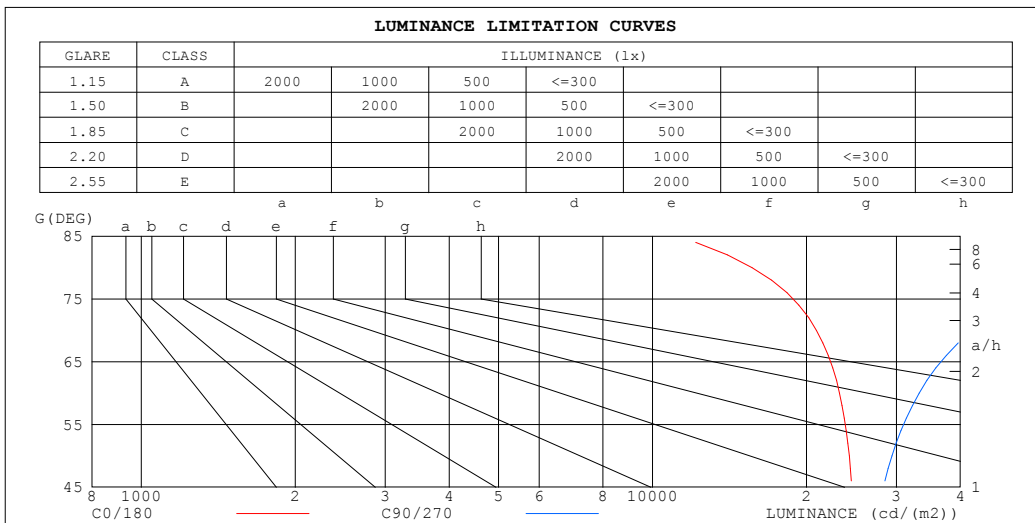
%lamp = 64.9%

C Range: 0 - 360DEG
 C Interval: 22.5DEG
 Test Speed: HIGH
 Temperature:25.3DEG
 Operators:YSL
 Test Date:2021-06-30

□ Range: 0 - 180DEG
 □ Interval: 2.0DEG
 Test System:EVERFINE GO-2000B_V1 SYSTEM V2.00.450
 Humidity:65.0%
 Test Distance:5.749m [K=1.0000]
 Remarks:

LUMINANCE LIMITATION CURVES

Test:U:23.998V I:0.2284A P:5.0000W PF:1.0000 Freq:0Hz		
Lamp Flux:0.97759x480 lm		
NAME: 127-158	TYPE:	WEIGHT:
SPEC.:	DIM.:	SERIAL No.: 1
MFR.: Tronix Lighting	SUR.: 0.005*1	Shielding Angle:



LUMINANCE cd/(m2)		
G (DEG)	C0/180	C90/270
85	14570	127034
80	15657	70396
75	20595	52678
70	20920	42190
65	23362	37184
60	23225	33233
55	24522	31379
50	24257	29409
45	25021	28577

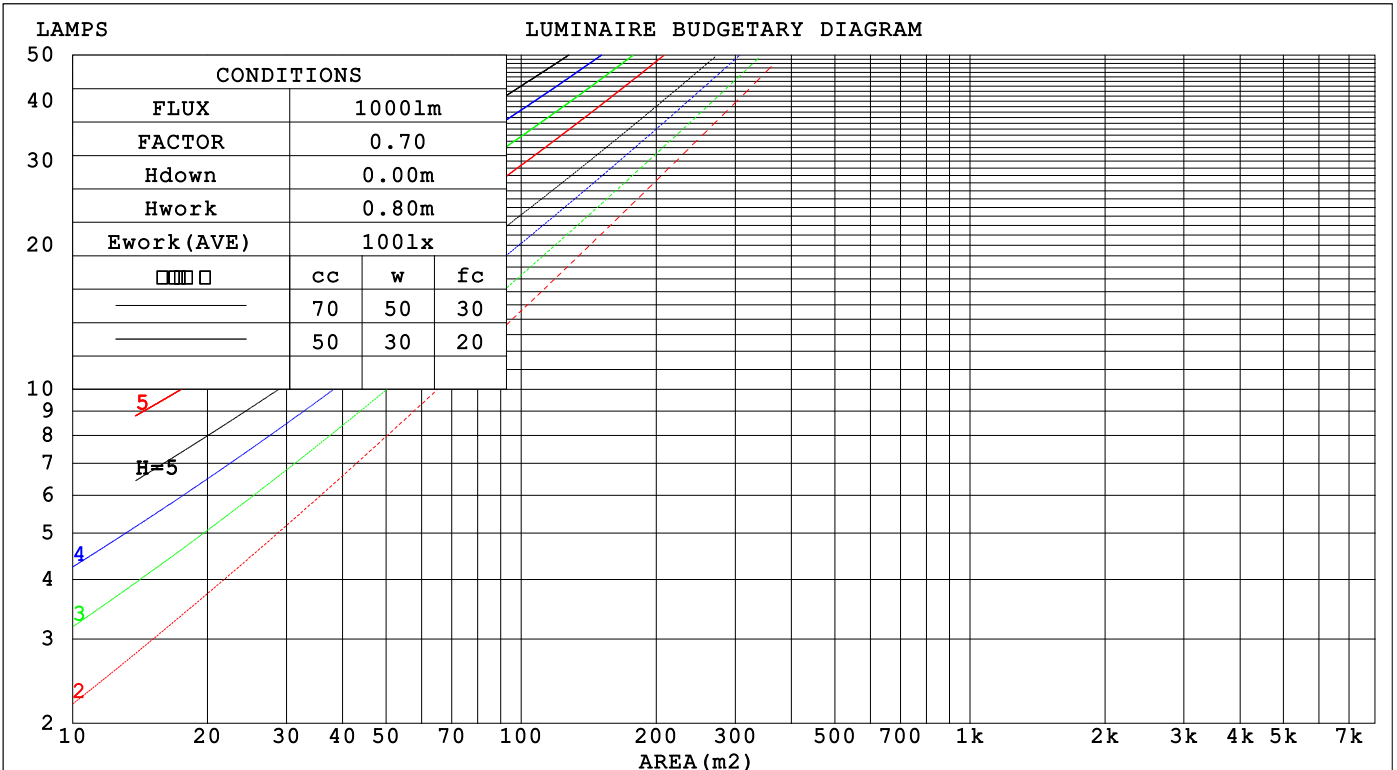
C Range: 0 - 360DEG
 C Interval: 22.5DEG
 Test Speed: HIGH
 Temperature:25.3DEG
 Operators:YSL
 Test Date:2021-06-30

Range: 0 - 180DEG
 Interval: 2.0DEG
 Test System:EVERFINE GO-2000B_V1 SYSTEM V2.00.450
 Humidity:65.0%
 Test Distance:5.749m [K=1.0000]
 Remarks:

CU AND LUMINAIRE BUDGETARY ESTIMATE DIAGRAM

Test:U:23.998V I:0.2284A P:5.0000W PF:1.0000 Freq:0Hz		
Lamp Flux:0.97759x480 lm		
NAME: 127-158	TYPE:	WEIGHT:
SPEC.:	DIM.:	SERIAL No.: 1
MFR.: Tronix Lighting	SUR.: 0.005*1	Shielding Angle:

□cc	80%			70%			50%			30%			10%			0
□w	50%	30%	10%	50%	30%	10%	50%	30%	10%	50%	30%	10%	50%	30%	10%	0
□fc	20%			20%			20%			20%			20%			0
RCR	RCR:Room Cavity Ratio															
	Coefficients of Utilization(CU)															
0.0	1.18	1.18	1.18	1.15	1.15	1.15	1.09	1.09	1.09	1.03	1.03	1.03	.98	.98	.98	.96
1.0	.99	.93	.88	.96	.91	.87	.91	.87	.83	.86	.83	.80	.82	.79	.77	.74
2.0	.84	.76	.70	.82	.75	.69	.78	.72	.66	.74	.69	.64	.70	.66	.62	.59
3.0	.73	.64	.57	.71	.63	.56	.68	.60	.54	.64	.58	.53	.61	.56	.51	.49
4.0	.64	.55	.47	.63	.54	.47	.60	.52	.46	.57	.50	.45	.54	.48	.43	.41
5.0	.57	.48	.40	.56	.47	.40	.53	.45	.39	.51	.44	.38	.48	.42	.37	.35
6.0	.51	.42	.35	.50	.41	.35	.48	.40	.34	.46	.39	.33	.44	.37	.33	.30
7.0	.46	.37	.31	.45	.37	.30	.43	.36	.30	.42	.35	.29	.40	.34	.29	.27
8.0	.42	.33	.27	.41	.33	.27	.40	.32	.26	.38	.31	.26	.37	.30	.26	.24
9.0	.39	.30	.24	.38	.30	.24	.36	.29	.24	.35	.28	.23	.34	.28	.23	.21
10.0	.36	.27	.22	.35	.27	.22	.34	.26	.21	.32	.26	.21	.31	.25	.21	.19



C Range: 0 - 360DEG
 C Interval: 22.5DEG
 Test Speed: HIGH
 Temperature:25.3DEG
 Operators:YSL
 Test Date:2021-06-30

□ Range: 0 - 180DEG
 □ Interval: 2.0DEG
 Test System:EVERFINE GO-2000B_V1 SYSTEM V2.00.450
 Humidity:65.0%
 Test Distance:5.749m [K=1.0000]
 Remarks:

WEC AND CCEC

Test:U:23.998V I:0.2284A P:5.0000W PF:1.0000 Freq:0Hz								
Lamp Flux:0.97759x480 lm								
NAME: 127-158			TYPE:			WEIGHT:		
SPEC.:			DIM.:			SERIAL No.: 1		
MFR.: Tronix Lighting			SUR.: 0.005*1			Shielding Angle:		

<input type="checkbox"/> cc	80%		70%		50%		30%		10%		0				
<input type="checkbox"/> w	50%	30%	10%	50%	30%	10%	50%	30%	10%	50%	30%	10%	0		
<input type="checkbox"/> fc	20%		20%		20%		20%		20%		0				
RCR	RCR:Room Cavity Ratio						Wall Exitance Coefficients(WEC)								
0.0															
1.0	.390	.222	.070	.381	.217	.069	.365	.209	.067	.350	.202	.065	.337	.195	.063
2.0	.340	.186	.057	.332	.183	.056	.318	.177	.055	.305	.171	.053	.292	.165	.052
3.0	.302	.161	.048	.296	.158	.048	.283	.153	.047	.271	.149	.046	.260	.144	.045
4.0	.273	.142	.042	.266	.139	.041	.255	.135	.040	.245	.131	.040	.235	.128	.039
5.0	.248	.126	.037	.242	.124	.036	.232	.121	.036	.223	.118	.035	.214	.114	.034
6.0	.227	.114	.033	.222	.112	.032	.213	.109	.032	.205	.106	.031	.197	.103	.031
7.0	.209	.103	.029	.205	.102	.029	.197	.100	.029	.189	.097	.028	.182	.095	.028
8.0	.194	.095	.027	.190	.094	.026	.183	.091	.026	.176	.089	.026	.169	.087	.025
9.0	.181	.087	.024	.177	.086	.024	.171	.084	.024	.164	.082	.024	.158	.080	.023
10.0	.169	.081	.023	.166	.080	.022	.160	.078	.022	.154	.077	.022	.149	.075	.021

<input type="checkbox"/> cc	80%		70%		50%		30%		10%		0				
<input type="checkbox"/> w	50%	30%	10%	50%	30%	10%	50%	30%	10%	50%	30%	10%	0		
<input type="checkbox"/> fc	20%		20%		20%		20%		20%		0				
RCR	RCR:Room Cavity Ratio						Ceiling Cavity Exitance Coefficients(CCEC)								
0.0															
1.0	.221	.221	.221	.189	.189	.189	.129	.129	.129	.074	.074	.074	.024	.024	.024
2.0	.210	.163	.124	.180	.140	.107	.123	.097	.075	.071	.057	.044	.023	.018	.014
3.0	.202	.146	.101	.173	.126	.088	.119	.088	.062	.069	.051	.036	.022	.017	.012
4.0	.194	.133	.087	.167	.115	.075	.115	.080	.053	.066	.047	.031	.021	.015	.010
5.0	.186	.123	.076	.160	.107	.067	.110	.074	.047	.064	.044	.028	.021	.014	.009
6.0	.179	.115	.069	.154	.100	.060	.106	.070	.043	.061	.041	.025	.020	.013	.008
7.0	.171	.108	.064	.147	.094	.056	.102	.066	.039	.059	.039	.023	.019	.013	.008
8.0	.165	.102	.060	.142	.089	.052	.098	.062	.037	.057	.037	.022	.018	.012	.007
9.0	.158	.097	.057	.136	.085	.049	.094	.059	.035	.055	.035	.021	.018	.012	.007
10.0	.152	.093	.054	.131	.081	.047	.091	.057	.033	.053	.034	.020	.017	.011	.007

C Range: 0 - 360DEG
 C Interval: 22.5DEG
 Test Speed: HIGH
 Temperature:25.3DEG
 Operators:YSL
 Test Date:2021-06-30

Range: 0 - 180DEG
 Interval: 2.0DEG
 Test System:EVERFINE GO-2000B_V1 SYSTEM V2.00.450
 Humidity:65.0%
 Test Distance:5.749m [K=1.0000]
 Remarks:

UGR(Unified Glare Rating) Table

Test:U:23.998V I:0.2284A P:5.0000W PF:1.0000 Freq:0Hz										
Lamp Flux:0.97759x480 lm										
NAME: 127-158				TYPE:				WEIGHT:		
SPEC.:				DIM.:				SERIAL No.: 1		
MFR.: Tronix Lighting				SUR.: 0.005*1				Shielding Angle:		
ceiling/cavity	0.7	0.7	0.5	0.5	0.3	0.7	0.7	0.5	0.5	0.3
walls	0.5	0.3	0.5	0.3	0.3	0.5	0.3	0.5	0.3	0.3
working plane	0.2	0.2	0.2	0.2	0.2	0.2	0.2	0.2	0.2	0.2
Room dimensions	Viewed crosswise					Viewed endwise				
x = 2H y = 2H	26.1	27.6	26.4	27.9	28.2	27.5	29.1	27.8	29.4	29.7
3H	27.6	29.1	28.0	29.4	29.8	30.1	31.6	30.5	31.9	32.2
4H	28.3	29.7	28.7	30.0	30.4	31.6	33.0	32.0	33.3	33.7
6H	28.7	30.0	29.1	30.4	30.8	33.2	34.5	33.6	34.9	35.3
8H	28.8	30.1	29.2	30.5	30.9	34.1	35.4	34.5	35.7	36.1
12H	28.9	30.1	29.3	30.5	30.9	35.1	36.3	35.5	36.7	37.1
4H 2H	27.1	28.5	27.5	28.8	29.2	28.1	29.6	28.5	29.9	30.2
3H	28.9	30.2	29.3	30.5	30.9	31.0	32.3	31.4	32.6	33.0
4H	29.7	30.9	30.2	31.3	31.7	32.7	33.8	33.1	34.2	34.7
6H	30.4	31.4	30.8	31.8	32.3	34.5	35.6	35.0	36.0	36.5
8H	30.6	31.6	31.1	32.0	32.5	35.5	36.5	36.0	36.9	37.4
12H	30.7	31.6	31.2	32.1	32.6	36.6	37.5	37.1	38.0	38.5
8H 4H	30.7	31.7	31.2	32.1	32.6	33.1	34.0	33.6	34.5	35.0
6H	31.7	32.5	32.2	33.0	33.5	35.2	36.1	35.7	36.5	37.1
8H	32.2	32.9	32.7	33.4	33.9	36.5	37.2	37.0	37.7	38.2
12H	32.5	33.2	33.1	33.7	34.3	37.8	38.5	38.4	39.0	39.6
12H 4H	31.0	31.9	31.5	32.4	32.9	33.1	34.0	33.6	34.5	35.0
6H	32.3	33.0	32.8	33.5	34.1	35.4	36.1	35.9	36.6	37.2
8H	32.9	33.5	33.4	34.1	34.6	36.7	37.3	37.2	37.9	38.4
Variations with the observer position at spacings(CIE Pub.117):										
S = 1.0H	+ 0.1 / - 0.1					+ 0.1 / - 0.1				
1.5H	+ 0.2 / - 0.3					+ 0.2 / - 0.3				
2.0H	+ 0.2 / - 0.4					+ 0.2 / - 0.4				

CIE Pub.117, 469.2 lm Total Lamp Luminous Flux Correct (8log(F/F0) = -2.6)
 Area: 0.005 m2

C Range: 0 - 360DEG
 C Interval: 22.5DEG
 Test Speed: HIGH
 Temperature:25.3DEG
 Operators:YSL
 Test Date:2021-06-30

Range: 0 - 180DEG
 Interval: 2.0DEG
 Test System:EVERFINE GO-2000B_V1 SYSTEM V2.00.450
 Humidity:65.0%
 Test Distance:5.749m [K=1.0000]
 Remarks:

UTILIZATION FACTORS TABLE

Test:U:23.998V I:0.2284A P:5.0000W PF:1.0000 Freq:0Hz Lamp Flux:0.97759x480 lm		
NAME: 127-158	TYPE:	WEIGHT:
SPEC.:	DIM.:	SERIAL No.: 1
MFR.: Tronix Lighting	SUR.: 0.005*1	Shielding Angle:

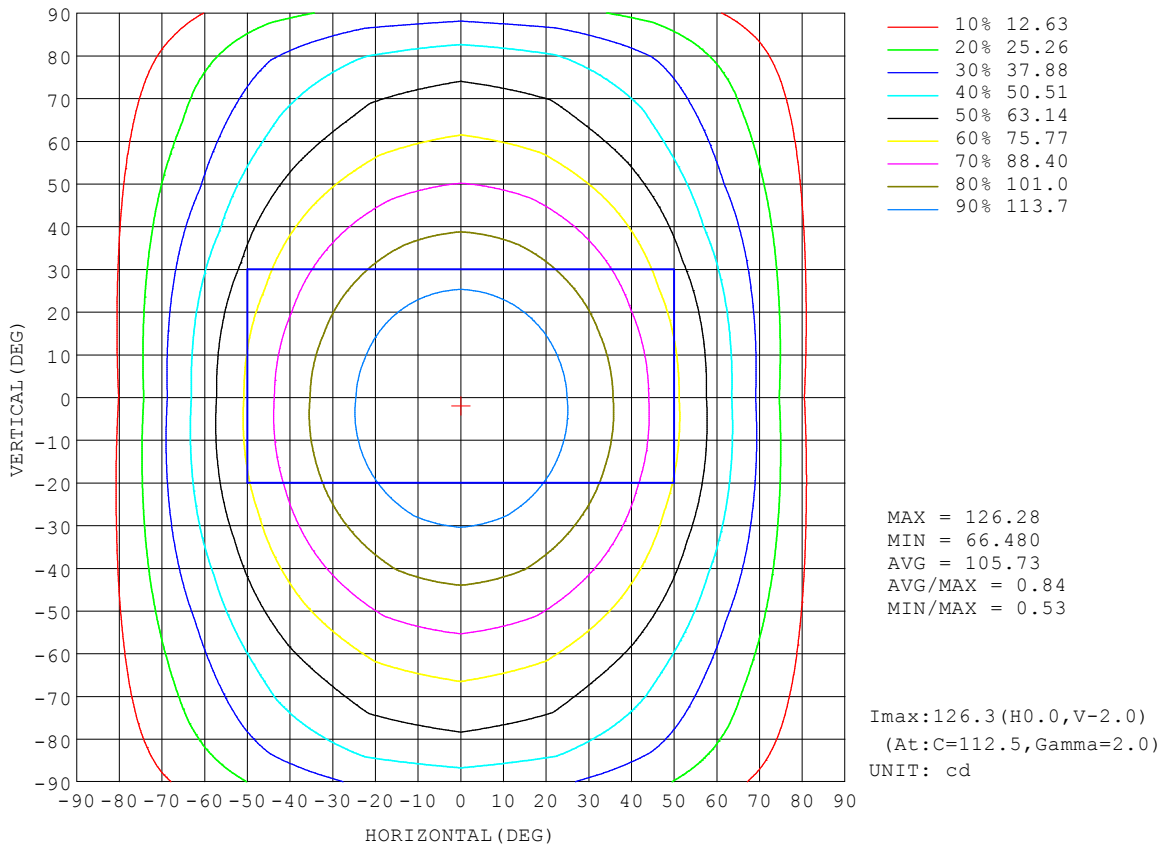
REFLECTANCE										
Ceiling	0.8	0.8	0.8	0.7	0.7	0.7	0.5	0.5	0.5	0
Walls	0.7	0.5	0.3	0.7	0.5	0.3	0.7	0.5	0.3	0
Working plane	0.2	0.2	0.2	0.2	0.2	0.2	0.2	0.2	0.2	0
ROOM INDEX	UTILIZATION FACTORS (PERCENT) $k(RI) \times RCR = 5$									
k = 0.60	52	40	32	51	40	32	50	39	32	25
0.80	62	49	41	60	48	41	58	47	40	33
1.00	70	57	49	68	56	49	66	58	48	40
1.25	76	64	56	75	64	56	72	62	55	46
1.50	82	70	62	80	69	61	76	67	60	51
2.00	89	78	70	86	77	70	82	74	68	59
2.50	93	83	76	91	82	75	86	79	73	63
3.00	97	88	81	94	86	80	89	83	77	67
4.00	101	94	88	98	92	86	93	88	83	73
5.00	104	98	92	101	95	90	96	91	87	76
ROOM INDEX	UF(total)									Direct
According to DIN EN 13032-2 2004			Suspended				SHRNOM = 1.25			

C Range: 0 - 360DEG
 C Interval: 22.5DEG
 Test Speed: HIGH
 Temperature:25.3DEG
 Operators:YSL
 Test Date:2021-06-30

Range: 0 - 180DEG
 Interval: 2.0DEG
 Test System:EVERFINE GO-2000B_V1 SYSTEM V2.00.450
 Humidity:65.0%
 Test Distance:5.749m [K=1.0000]
 Remarks:

ISOCANDELA DIAGRAM

Test:U:23.998V I:0.2284A P:5.0000W PF:1.0000 Freq:0Hz Lamp Flux:0.97759x480 lm		
NAME: 127-158	TYPE:	WEIGHT:
SPEC.:	DIM.:	SERIAL No.: 1
MFR.: Tronix Lighting	SUR.: 0.005*1	Shielding Angle:

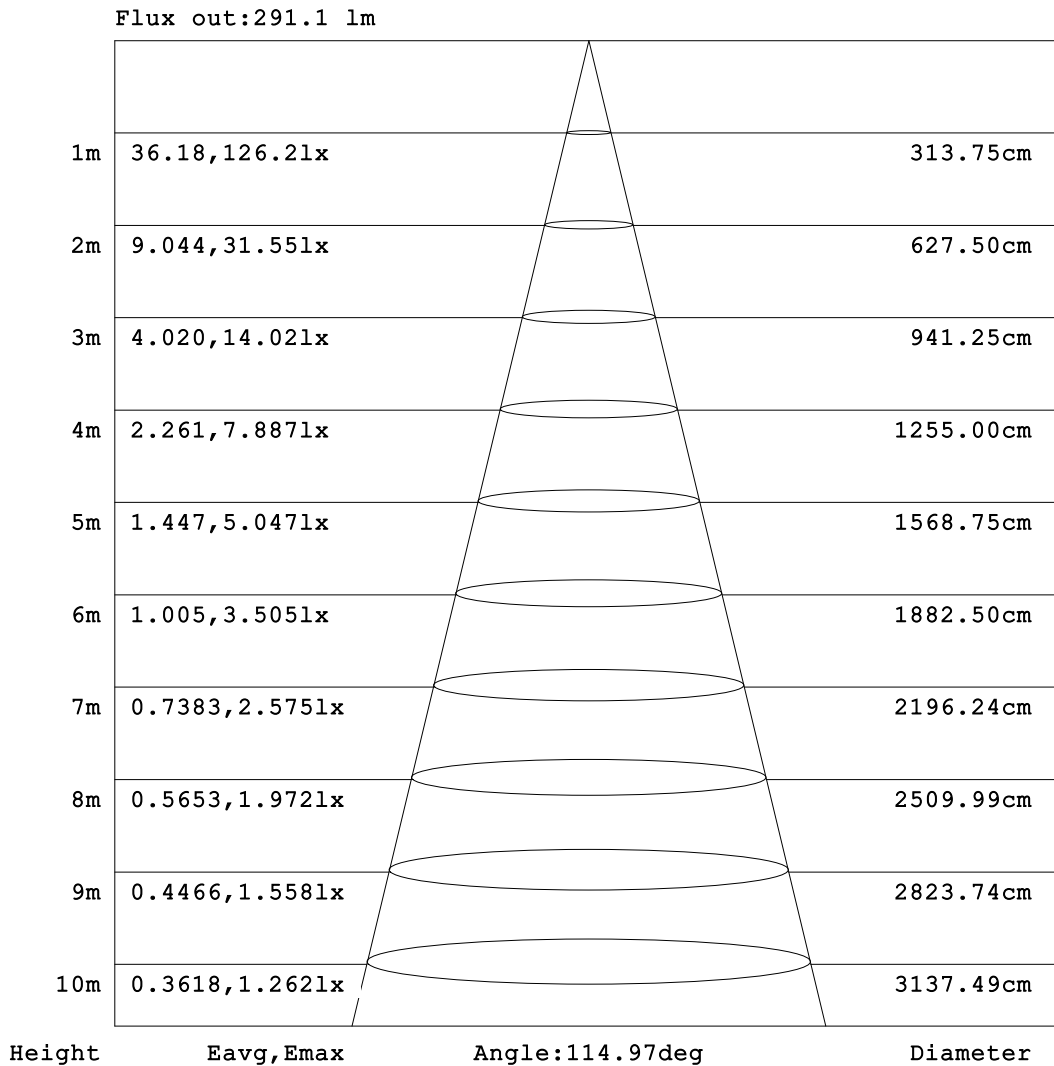


C Range: 0 - 360DEG
 C Interval: 22.5DEG
 Test Speed: HIGH
 Temperature:25.3DEG
 Operators:YSL
 Test Date:2021-06-30

Range: 0 - 180DEG
 Interval: 2.0DEG
 Test System:EVERFINE GO-2000B_V1 SYSTEM V2.00.450
 Humidity:65.0%
 Test Distance:5.749m [K=1.0000]
 Remarks:

AAI Figure

Test:U:23.998V I:0.2284A P:5.0000W PF:1.0000 Freq:0Hz Lamp Flux:0.97759x480 lm		
NAME: 127-158	TYPE:	WEIGHT:
SPEC.:	DIM.:	SERIAL No.: 1
MFR.: Tronix Lighting	SUR.: 0.005*1	Shielding Angle:



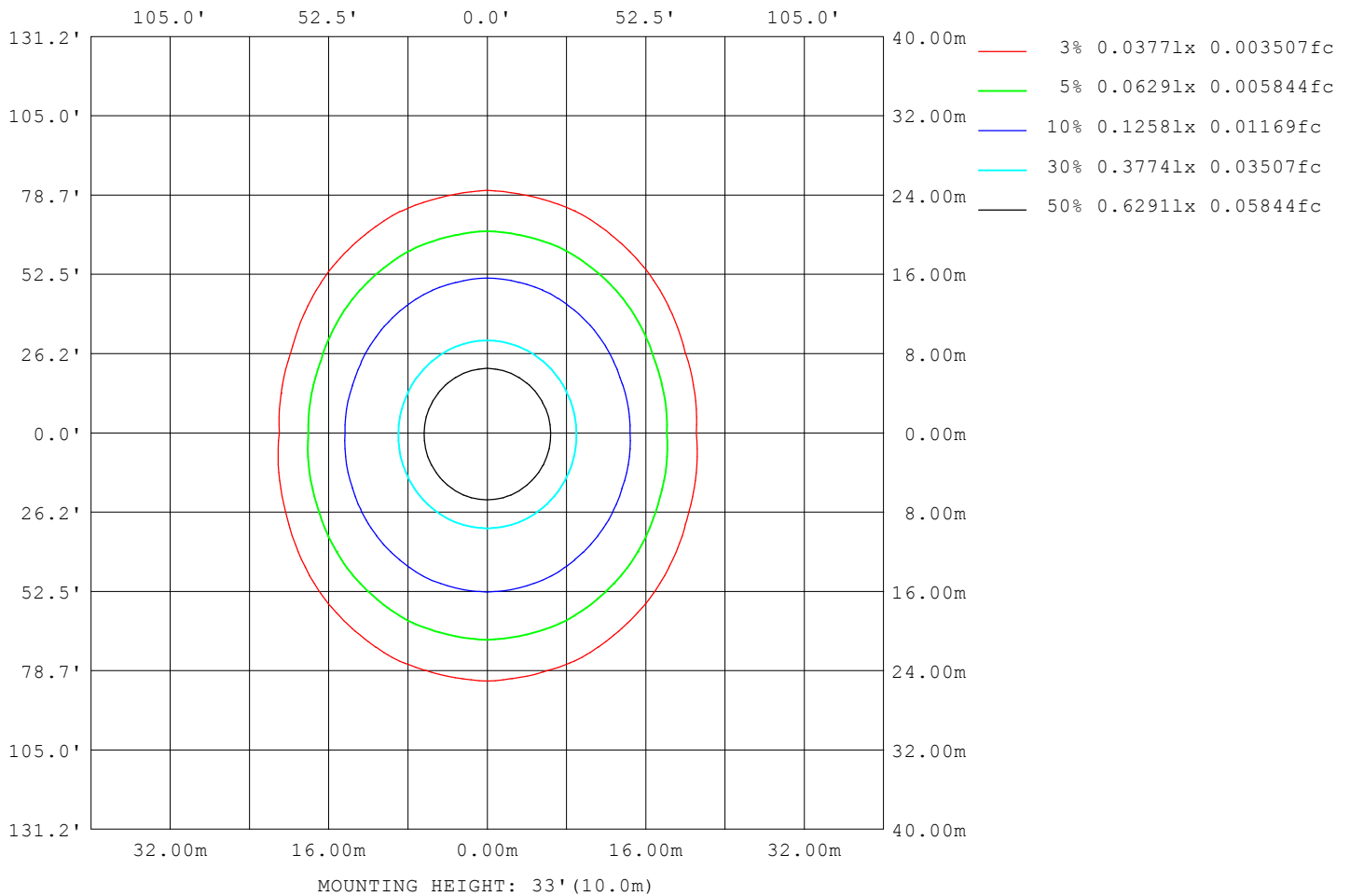
Note: The Curves indicate the illuminated area and the average illumination when the luminaire is at different distance.

C Range: 0 - 360DEG
 C Interval: 22.5DEG
 Test Speed: HIGH
 Temperature: 25.3DEG
 Operators: YSL
 Test Date: 2021-06-30

Range: 0 - 180DEG
 Interval: 2.0DEG
 Test System: EVERFINE GO-2000B_V1 SYSTEM V2.00.450
 Humidity: 65.0%
 Test Distance: 5.749m [K=1.0000]
 Remarks:

ISOLUX DIAGRAM

Test:U:23.998V I:0.2284A P:5.0000W PF:1.0000 Freq:0Hz Lamp Flux:0.97759x480 lm		
NAME: 127-158	TYPE:	WEIGHT:
SPEC.:	DIM.:	SERIAL No.: 1
MFR.: Tronix Lighting	SUR.: 0.005*1	Shielding Angle:



C Range: 0 - 360DEG
 C Interval: 22.5DEG
 Test Speed: HIGH
 Temperature:25.3DEG
 Operators:YSL
 Test Date:2021-06-30

Range: 0 - 180DEG
 Interval: 2.0DEG
 Test System:EVERFINE GO-2000B_V1 SYSTEM V2.00.450
 Humidity:65.0%
 Test Distance:5.749m [K=1.0000]
 Remarks:

LED Avg.L Report

Test:U:23.998V I:0.2284A P:5.0000W PF:1.0000 Freq:0Hz Lamp Flux:0.97759x480 lm		
NAME: 127-158	TYPE:	WEIGHT:
SPEC.:	DIM.:	SERIAL No.: 1
MFR.: Tronix Lighting	SUR.: 0.005*1	Shielding Angle:

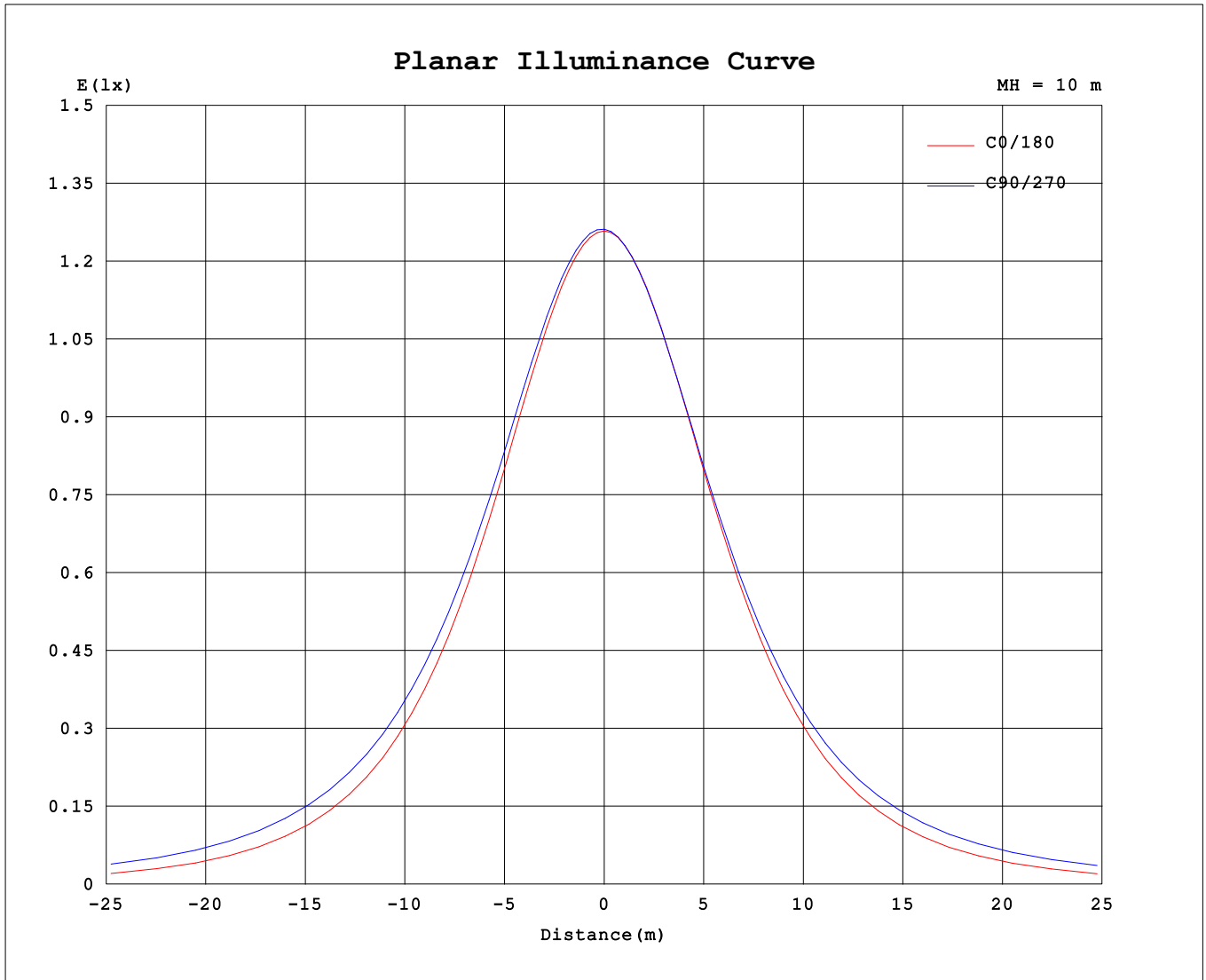
AvgL	cd/m2
L_0~180 (65) av	22140
L_0~180 (75) av	18562
L_0~180 (85) av	10566
L_90~270 (65) av	35351
L_90~270 (75) av	49829
L_90~270 (85) av	113556
L_45 (65) av	29667
L_45 (75) av	38549
L_45 (85) av	81592

Standard: GB/T 29293-2012

C Range: 0 - 360DEG
 C Interval: 22.5DEG
 Test Speed: HIGH
 Temperature:25.3DEG
 Operators:YSL
 Test Date:2021-06-30

Range: 0 - 180DEG
 Interval: 2.0DEG
 Test System:EVERFINE GO-2000B_V1 SYSTEM V2.00.450
 Humidity:65.0%
 Test Distance:5.749m [K=1.0000]
 Remarks:

Planar Illuminance Curve



C Range: 0 - 360DEG
 C Interval: 22.5DEG
 Test Speed: HIGH
 Temperature: 25.3DEG
 Operators: YSL
 Test Date: 2021-06-30

Range: 0 - 180DEG
 Interval: 2.0DEG
 Test System: EVERFINE GO-2000B_V1 SYSTEM V2.00.450
 Humidity: 65.0%
 Test Distance: 5.749m [K=1.0000]
 Remarks:

LUMINOUS DISTRIBUTION INTENSITY DATA

Test:U:23.998V I:0.2284A P:5.0000W PF:1.0000 Freq:0Hz Lamp Flux:0.97759x480 lm		
NAME: 127-158	TYPE:	WEIGHT:
SPEC.:	DIM.:	SERIAL No.: 1
MFR.: Tronix Lighting	SUR.: 0.005*1	Shielding Angle:

Table--1

UNIT: cd

C (DEG) □ (DEG)	0	22.5	45	67.5	90	112.5	135	157.5	180	202.5	225	247.5	270	292.5	315	337.5			
0	126	126	126	126	126	126	126	126	126	126	126	126	126	126	126	126			
5	126	126	126	126	126	126	126	126	126	126	125	125	125	125	125	125			
10	124	124	125	125	125	125	125	124	124	124	124	123	123	123	123	124	124		
15	122	123	123	124	124	124	123	123	122	122	122	121	121	121	122	122			
20	118	119	120	121	121	121	120	119	118	117	118	118	118	117	118	118			
25	115	116	117	118	118	118	117	116	114	114	114	114	115	114	114	114			
30	108	110	111	113	114	113	111	109	108	107	108	109	109	109	108	108			
35	103	105	107	110	111	110	107	105	103	103	104	105	106	105	104	103			
40	95.0	97.0	100	104	105	104	100	96.7	94.4	94.1	96.0	98.4	99.6	98.6	96.4	94.6			
45	88.6	91.1	95.2	99.4	101	99.4	95.1	90.7	88.0	87.8	90.6	93.7	95.2	94.0	91.1	88.4			
50	78.1	81.2	86.9	92.4	94.4	92.5	86.9	80.9	77.4	77.7	82.1	86.5	88.4	86.8	82.7	78.4			
55	70.4	74.2	81.1	87.5	89.9	87.6	81.2	73.8	69.7	70.5	76.1	81.5	83.9	81.9	76.9	71.4			
60	58.2	63.1	72.2	80.1	83.0	80.2	72.3	62.8	57.3	59.3	67.2	74.2	77.2	74.7	68.1	60.3			
65	49.4	55.5	66.2	75.2	78.5	75.4	66.4	55.3	48.6	51.6	61.4	69.6	73.0	70.2	62.4	52.8			
70	35.8	44.0	57.7	68.3	72.1	68.5	58.0	44.0	35.0	40.5	53.4	63.5	67.3	64.1	54.6	41.8			
75	26.7	36.7	52.5	64.1	68.1	64.3	52.9	36.9	25.9	33.5	48.8	59.2	63.1	59.8	50.0	35.0			
80	13.6	27.2	45.4	57.1	61.0	57.3	45.8	27.7	12.9	24.7	41.1	51.5	55.4	52.1	42.4	26.4			
85	6.36	22.1	39.6	51.3	55.3	51.6	40.0	22.7	5.76	19.3	34.6	44.0	47.5	44.2	35.4	20.9			
90	0.21	12.4	28.5	40.1	44.0	40.4	29.0	12.9	0.20	8.51	21.3	29.7	32.8	29.4	21.3	9.17			
95	0.25	4.68	19.3	30.7	34.5	31.1	20.0	5.19	0.23	0.38	4.64	11.5	14.5	10.6	4.26	0.58			
100	0.37	0.52	5.00	14.7	18.2	15.2	5.74	0.51	0.33	0.43	0.61	0.95	1.34	1.00	0.62	0.44			
105	0.47	0.53	1.48	5.47	8.22	6.03	1.57	0.55	0.41	0.50	0.66	0.79	0.83	0.79	0.67	0.49			
110	0.62	0.65	0.84	1.47	2.01	1.54	0.84	0.67	0.55	0.60	0.74	0.85	0.90	0.86	0.75	0.61			
115	0.72	0.73	0.85	1.05	1.21	1.06	0.86	0.74	0.64	0.67	0.79	0.90	0.94	0.91	0.81	0.68			
120	0.86	0.85	0.94	1.02	1.06	1.02	0.94	0.86	0.77	0.78	0.86	0.95	1.00	0.98	0.90	0.80			
125	0.95	0.94	1.01	1.07	1.09	1.07	1.00	0.94	0.85	0.85	0.92	1.00	1.03	1.03	0.96	0.88			
130	1.07	1.07	1.11	1.14	1.16	1.14	1.09	1.05	0.97	0.96	1.00	1.06	1.09	1.10	1.05	0.99			
135	1.15	1.14	1.17	1.20	1.20	1.18	1.14	1.12	1.05	1.03	1.05	1.11	1.13	1.14	1.11	1.07			
140	1.24	1.24	1.27	1.27	1.26	1.26	1.23	1.22	1.15	1.12	1.14	1.17	1.18	1.21	1.20	1.17			
145	1.30	1.31	1.33	1.32	1.31	1.31	1.28	1.27	1.22	1.18	1.19	1.22	1.22	1.25	1.25	1.24			
150	1.39	1.40	1.41	1.39	1.38	1.38	1.35	1.36	1.31	1.27	1.26	1.29	1.27	1.31	1.33	1.34			
155	1.45	1.46	1.46	1.44	1.44	1.43	1.41	1.41	1.38	1.34	1.32	1.34	1.33	1.36	1.39	1.40			
160	1.54	1.55	1.54	1.51	1.52	1.49	1.48	1.50	1.48	1.44	1.41	1.41	1.42	1.43	1.48	1.50			
165	1.60	1.61	1.59	1.55	1.57	1.54	1.53	1.57	1.55	1.51	1.48	1.47	1.49	1.48	1.54	1.57			
170	1.69	1.69	1.67	1.64	1.65	1.62	1.63	1.67	1.65	1.63	1.59	1.58	1.58	1.58	1.64	1.68			
175	1.75	1.74	1.73	1.69	1.70	1.68	1.70	1.74	1.72	1.70	1.67	1.65	1.65	1.65	1.70	1.74			
180	1.81	1.79	1.77	1.75	1.76	1.74	1.79	1.82	1.80	1.79	1.77	1.75	1.76	1.74	1.78	1.82			

C Range: 0 - 360DEG
 C Interval: 22.5DEG
 Test Speed: HIGH
 Temperature:25.3DEG
 Operators:YSL
 Test Date:2021-06-30

□ Range: 0 - 180DEG
 □ Interval: 2.0DEG
 Test System:EVERFINE GO-2000B_V1 SYSTEM V2.00.450
 Humidity:65.0%
 Test Distance:5.749m [K=1.0000]
 Remarks: