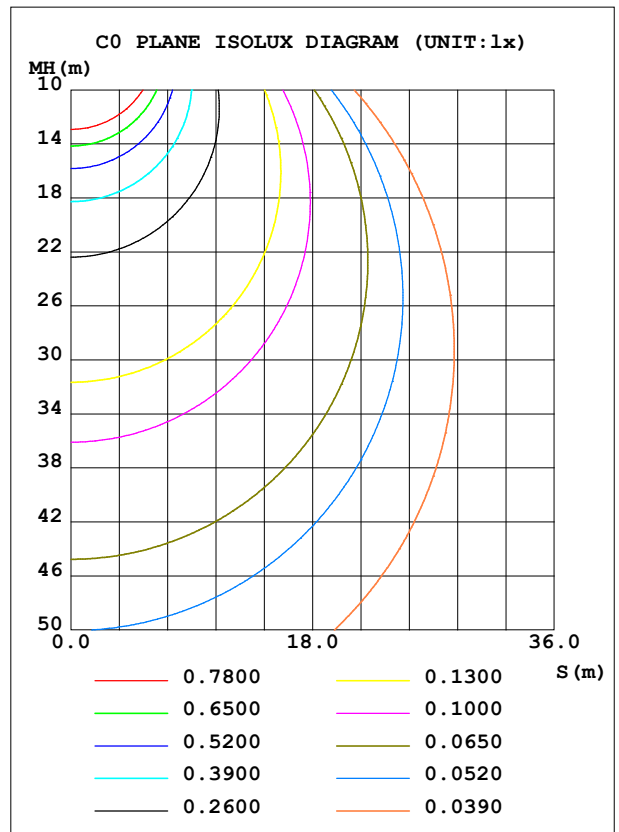
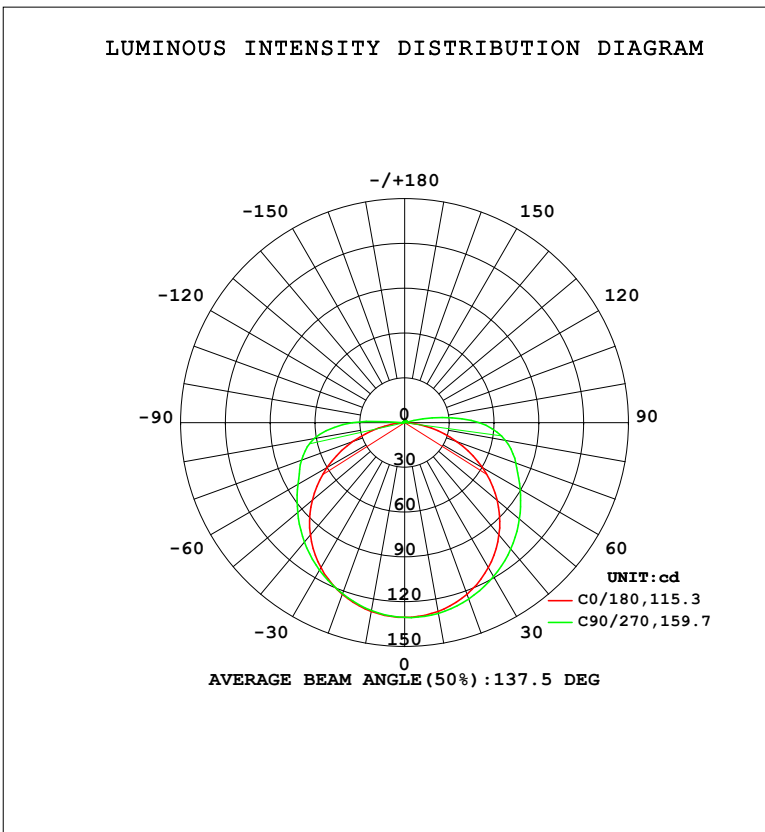


**LUMINAIRE PHOTOMETRIC TEST REPORT**

Test:U:23.998V I:0.2053A P:5.0000W PF:1.0000 Freq:0Hz Lamp Flux:1.03638x480 lm		
NAME: 127-157	TYPE:	WEIGHT:
SPEC.:	DIM.:	SERIAL No.: 1
MFR.: Tronix Lighting	SUR.: 0.005*1	Shielding Angle:

DATA OF LAMP		PHOTOMETRIC DATA				Eff: 99.49 lm/W
MODEL		I <sub>max</sub> (cd)	130.6	S/MH (C0/180)		1.28
NOMINAL POWER (W)	5	LOR (%)	100.0	S/MH (C90/270)		1.31
RATED VOLTAGE (V)	24	TOTAL FLUX (lm)	497.46	<input type="checkbox"/> UP, DN (C0-180)		2.8,49.4
NOMINAL FLUX (lm)	1.03638	CIE CLASS	DIRECT	<input type="checkbox"/> UP, DN (C180-360)		1.2,46.6
LAMPS INSIDE	480	<input type="checkbox"/> up (%)	3.9	CIBSE SHR NOM		1.50
TEST VOLTAGE (V)	24	<input type="checkbox"/> down (%)	96.1	CIBSE SHR MAX		1.55



C Range: 0 - 360DEG  
 C Interval: 22.5DEG  
 Test Speed: HIGH  
 Temperature: 25.3DEG  
 Operators: YSL  
 Test Date: 2021-06-30

Range: 0 - 180DEG  
 Interval: 2.0DEG  
 Test System: EVERFINE GO-2000B\_V1 SYSTEM V2.00.450  
 Humidity: 65.0%  
 Test Distance: 5.749m [K=1.0000]  
 Remarks:

ZONAL FLUX DIAGRAM

ZONAL FLUX DIAGRAM:

°	C0	C45	C90	C135	C180	C225	C270	C315	°	□ zone	□ total	%lum,lamp
10	128.4	129.3	129.8	129.4	128.4	128.0	127.8	127.8	0- 10	12.37	12.37	2.49,2.49
20	122.3	124.3	125.7	124.6	122.3	121.9	122.0	121.6	10- 20	35.67	48.04	9.66,9.66
30	112.2	116.0	119.1	116.4	112.3	112.5	114.2	112.3	20- 30	54.94	103.0	20.7,20.7
40	98.33	104.9	110.6	105.4	98.32	100.7	104.5	100.5	30- 40	68.23	171.2	34.4,34.4
50	80.90	91.64	100.4	92.29	80.78	86.72	93.60	86.68	40- 50	74.32	245.5	49.4,49.4
60	60.27	76.98	89.33	77.73	59.98	71.81	82.56	72.06	50- 60	73.02	318.6	64,64
70	37.15	62.65	79.24	63.55	36.74	58.07	73.60	58.81	60- 70	65.64	384.2	77.2,77.2
80	14.08	50.89	68.47	51.96	13.63	46.47	61.44	46.87	70- 80	54.83	439.0	88.3,88.3
90	0.2286	32.25	49.93	33.37	0.2026	23.09	35.12	22.97	80- 90	38.84	477.9	96.1,96.1
100	0.4023	3.879	18.86	4.811	0.3527	0.6759	0.8741	0.6825	90-100	12.99	490.8	98.7,98.7
110	0.6571	0.8612	1.014	0.8653	0.5743	0.7901	0.9715	0.8252	100-110	1.710	492.6	99,99
120	0.9025	1.021	1.121	1.003	0.8029	0.9210	1.071	0.9702	110-120	0.8867	493.4	99.2,99.2
130	1.119	1.180	1.235	1.143	1.015	1.057	1.161	1.115	120-130	0.9413	494.4	99.4,99.4
140	1.300	1.342	1.337	1.286	1.196	1.190	1.245	1.258	130-140	0.9276	495.3	99.6,99.6
150	1.453	1.485	1.451	1.412	1.360	1.321	1.335	1.396	140-150	0.8384	496.2	99.7,99.7
160	1.601	1.618	1.596	1.550	1.534	1.471	1.482	1.541	150-160	0.6808	496.8	99.9,99.9
170	1.755	1.753	1.707	1.705	1.718	1.656	1.644	1.698	160-170	0.4582	497.3	100,100
180	1.875	1.839	1.826	1.855	1.870	1.837	1.824	1.852	170-180	0.1678	497.5	100,100
DEG	LUMINOUS INTENSITY:cd									UNIT:lm		

Conical surface Flux(90deg): 215.56 lm

%lum = 43.3%

%lamp = 43.3%

Conical surface Flux(120deg): 318.55 lm

%lum = 64.0%

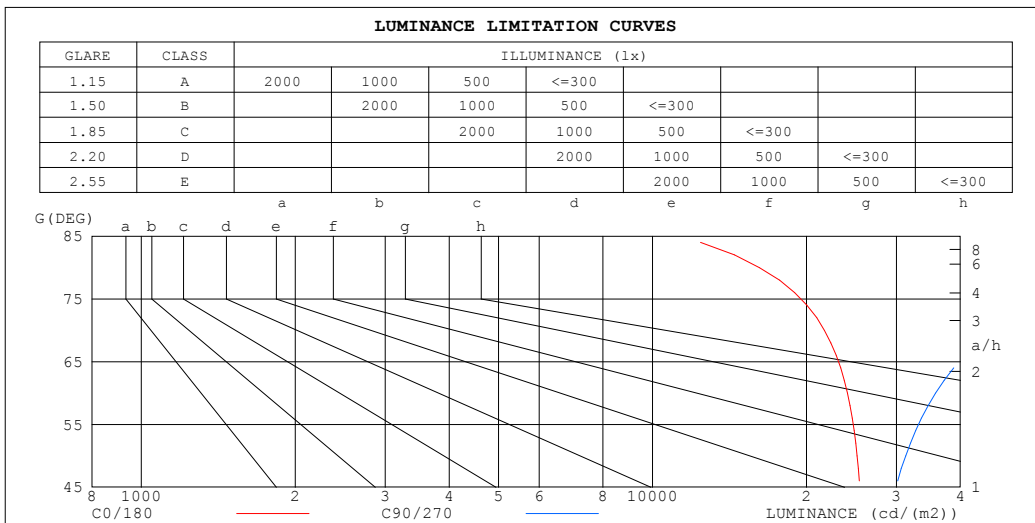
%lamp = 64.0%

C Range: 0 - 360DEG  
 C Interval: 22.5DEG  
 Test Speed: HIGH  
 Temperature:25.3DEG  
 Operators:YSL  
 Test Date:2021-06-30

□ Range: 0 - 180DEG  
 □ Interval: 2.0DEG  
 Test System:EVERFINE GO-2000B\_V1 SYSTEM V2.00.450  
 Humidity:65.0%  
 Test Distance:5.749m [K=1.0000]  
 Remarks:

**LUMINANCE LIMITATION CURVES**

Test:U:23.998V I:0.2053A P:5.0000W PF:1.0000 Freq:0Hz		
Lamp Flux:1.03638x480 lm		
NAME: 127-157	TYPE:	WEIGHT:
SPEC.:	DIM.:	SERIAL No.: 1
MFR.: Tronix Lighting	SUR.: 0.005*1	Shielding Angle:



LUMINANCE cd/(m2)		
G (DEG)	C0/180	C90/270
85	14894	143474
80	16195	78963
75	21341	58446
70	21690	46397
65	24209	40281
60	24067	35781
55	25417	33518
50	25130	31271
45	25914	30206

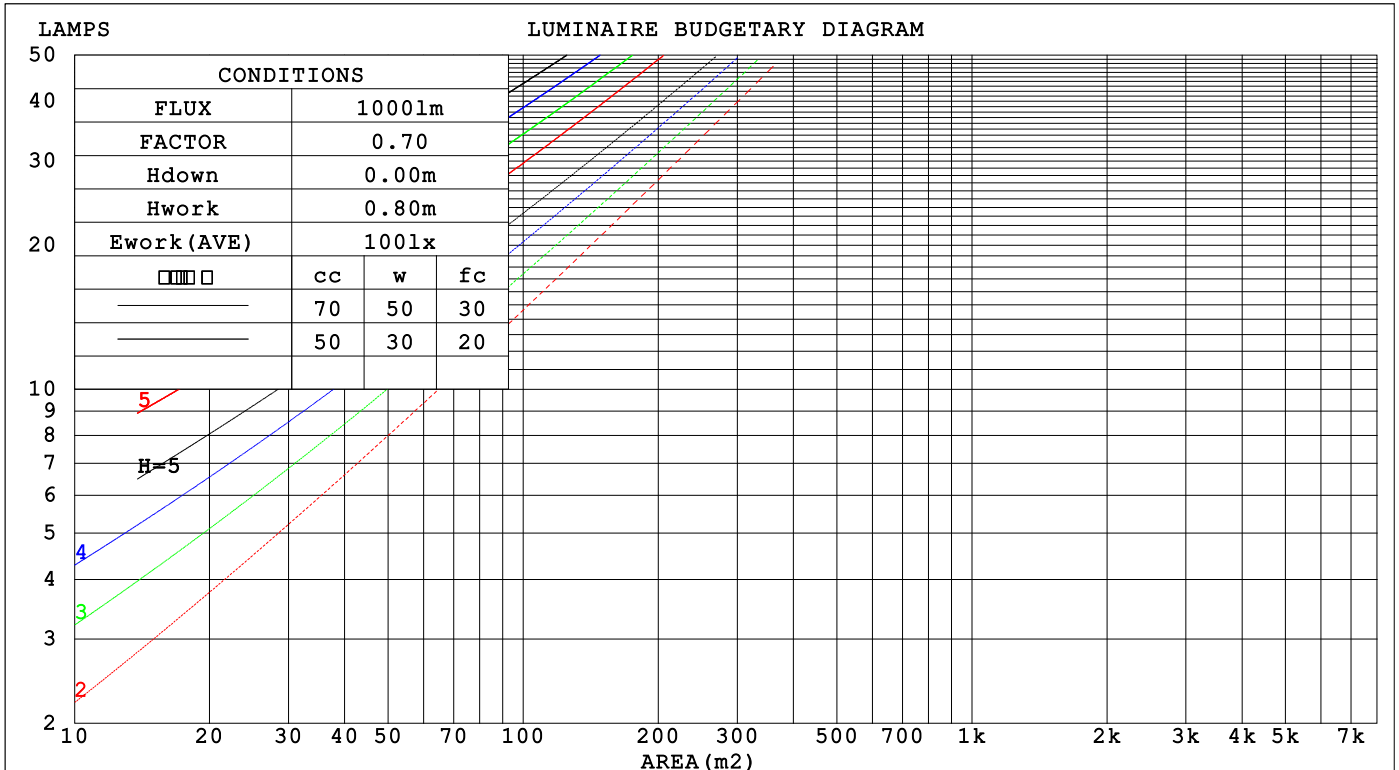
C Range: 0 - 360DEG  
 C Interval: 22.5DEG  
 Test Speed: HIGH  
 Temperature:25.3DEG  
 Operators:YSL  
 Test Date:2021-06-30

Range: 0 - 180DEG  
 Interval: 2.0DEG  
 Test System:EVERFINE GO-2000B\_V1 SYSTEM V2.00.450  
 Humidity:65.0%  
 Test Distance:5.749m [K=1.0000]  
 Remarks:

**CU AND LUMINAIRE BUDGETARY ESTIMATE DIAGRAM**

Test:U:23.998V I:0.2053A P:5.0000W PF:1.0000 Freq:0Hz		
Lamp Flux:1.03638x480 lm		
NAME: 127-157	TYPE:	WEIGHT:
SPEC.:	DIM.:	SERIAL No.: 1
MFR.: Tronix Lighting	SUR.: 0.005*1	Shielding Angle:

□cc	80%			70%			50%			30%			10%			0
□w	50%	30%	10%	50%	30%	10%	50%	30%	10%	50%	30%	10%	50%	30%	10%	0
□fc	20%			20%			20%			20%			20%			0
RCR	RCR:Room Cavity Ratio						Coefficients of Utilization(CU)									
0.0	1.18	1.18	1.18	1.15	1.15	1.15	1.09	1.09	1.09	1.03	1.03	1.03	.98	.98	.98	.96
1.0	.98	.93	.88	.96	.91	.86	.91	.86	.83	.86	.82	.79	.82	.79	.76	.74
2.0	.84	.76	.69	.82	.74	.68	.77	.71	.66	.73	.68	.64	.70	.65	.62	.59
3.0	.73	.64	.56	.71	.62	.55	.67	.60	.54	.64	.58	.52	.61	.55	.51	.48
4.0	.64	.54	.47	.62	.53	.46	.59	.51	.45	.56	.50	.44	.54	.48	.43	.40
5.0	.57	.47	.40	.55	.46	.39	.53	.45	.39	.50	.43	.38	.48	.42	.37	.34
6.0	.51	.41	.34	.50	.41	.34	.47	.39	.33	.45	.38	.33	.43	.37	.32	.30
7.0	.46	.37	.30	.45	.36	.30	.43	.35	.29	.41	.34	.29	.39	.33	.28	.26
8.0	.42	.33	.27	.41	.32	.26	.39	.32	.26	.38	.31	.26	.36	.30	.25	.23
9.0	.38	.30	.24	.38	.29	.24	.36	.29	.23	.35	.28	.23	.33	.27	.23	.21
10.0	.35	.27	.22	.35	.27	.21	.33	.26	.21	.32	.25	.21	.31	.25	.21	.19



C Range: 0 - 360DEG  
 C Interval: 22.5DEG  
 Test Speed: HIGH  
 Temperature:25.3DEG  
 Operators:YSL  
 Test Date:2021-06-30

□ Range: 0 - 180DEG  
 □ Interval: 2.0DEG  
 Test System:EVERFINE GO-2000B\_V1 SYSTEM V2.00.450  
 Humidity:65.0%  
 Test Distance:5.749m [K=1.0000]  
 Remarks:

**WEC AND CCEC**

Test:U:23.998V I:0.2053A P:5.0000W PF:1.0000 Freq:0Hz								
Lamp Flux:1.03638x480 lm								
NAME: 127-157			TYPE:			WEIGHT:		
SPEC.:			DIM.:			SERIAL No.: 1		
MFR.: Tronix Lighting			SUR.: 0.005*1			Shielding Angle:		

<input type="checkbox"/> cc	80%			70%			50%			30%			10%			0
<input type="checkbox"/> w	50%	30%	10%	50%	30%	10%	50%	30%	10%	50%	30%	10%	50%	30%	10%	0
<input type="checkbox"/> fc	20%			20%			20%			20%			20%			0
RCR	RCR:Room Cavity Ratio						Wall Exitance Coefficients (WEC)									
0.0																
1.0	.396	.225	.071	.388	.221	.070	.372	.213	.068	.357	.206	.066	.344	.199	.064	
2.0	.344	.189	.058	.336	.185	.057	.322	.179	.056	.309	.173	.054	.297	.168	.053	
3.0	.306	.163	.049	.299	.160	.048	.286	.155	.047	.274	.150	.046	.263	.146	.045	
4.0	.275	.143	.042	.269	.141	.042	.257	.137	.041	.247	.133	.040	.237	.129	.039	
5.0	.250	.127	.037	.244	.125	.037	.234	.122	.036	.225	.119	.035	.216	.115	.035	
6.0	.228	.114	.033	.224	.113	.033	.215	.110	.032	.206	.107	.031	.198	.104	.031	
7.0	.210	.104	.029	.206	.103	.029	.198	.100	.029	.190	.098	.028	.183	.095	.028	
8.0	.195	.095	.027	.191	.094	.027	.184	.092	.026	.177	.090	.026	.170	.087	.025	
9.0	.182	.088	.025	.178	.087	.024	.172	.085	.024	.165	.083	.024	.159	.081	.023	
10.0	.170	.081	.023	.167	.081	.022	.161	.079	.022	.155	.077	.022	.150	.075	.022	

<input type="checkbox"/> cc	80%			70%			50%			30%			10%			0
<input type="checkbox"/> w	50%	30%	10%	50%	30%	10%	50%	30%	10%	50%	30%	10%	50%	30%	10%	0
<input type="checkbox"/> fc	20%			20%			20%			20%			20%			0
RCR	RCR:Room Cavity Ratio						Ceiling Cavity Exitance Coefficients (CCEC)									
0.0	.220	.220	.220	.188	.188	.188	.129	.129	.129	.074	.074	.074	.024	.024	.024	
1.0	.217	.186	.158	.185	.159	.136	.127	.110	.094	.073	.063	.055	.023	.020	.018	
2.0	.210	.162	.122	.180	.140	.106	.123	.097	.074	.071	.056	.043	.023	.018	.014	
3.0	.202	.145	.100	.173	.125	.087	.119	.087	.061	.069	.051	.036	.022	.016	.012	
4.0	.194	.132	.085	.166	.114	.074	.114	.080	.052	.066	.047	.031	.021	.015	.010	
5.0	.186	.122	.075	.160	.106	.065	.110	.074	.046	.064	.043	.027	.021	.014	.009	
6.0	.178	.114	.068	.153	.099	.059	.106	.069	.042	.061	.041	.025	.020	.013	.008	
7.0	.171	.107	.063	.147	.093	.055	.102	.065	.039	.059	.038	.023	.019	.013	.008	
8.0	.164	.101	.059	.141	.088	.051	.098	.062	.036	.057	.036	.022	.018	.012	.007	
9.0	.157	.097	.055	.136	.084	.048	.094	.059	.034	.055	.035	.020	.018	.011	.007	
10.0	.151	.092	.053	.130	.080	.046	.091	.056	.033	.053	.033	.020	.017	.011	.006	

C Range: 0 - 360DEG  
 C Interval: 22.5DEG  
 Test Speed: HIGH  
 Temperature:25.3DEG  
 Operators:YSL  
 Test Date:2021-06-30

Range: 0 - 180DEG  
 Interval: 2.0DEG  
 Test System:EVERFINE GO-2000B\_V1 SYSTEM V2.00.450  
 Humidity:65.0%  
 Test Distance:5.749m [K=1.0000]  
 Remarks:

**UGR(Unified Glare Rating) Table**

Test:U:23.998V I:0.2053A P:5.0000W PF:1.0000 Freq:0Hz										
Lamp Flux:1.03638x480 lm										
NAME: 127-157					TYPE:			WEIGHT:		
SPEC.:					DIM.:			SERIAL No.: 1		
MFR.: Tronix Lighting					SUR.: 0.005*1			Shielding Angle:		
ceiling/cavity	0.7	0.7	0.5	0.5	0.3	0.7	0.7	0.5	0.5	0.3
walls	0.5	0.3	0.5	0.3	0.3	0.5	0.3	0.5	0.3	0.3
working plane	0.2	0.2	0.2	0.2	0.2	0.2	0.2	0.2	0.2	0.2
Room dimensions	Viewed crosswise					Viewed endwise				
x = 2H y = 2H	26.0	27.6	26.3	27.9	28.2	27.6	29.2	27.9	29.4	29.7
3H	27.6	29.1	27.9	29.4	29.7	30.3	31.8	30.6	32.1	32.4
4H	28.2	29.6	28.6	30.0	30.3	31.8	33.2	32.2	33.6	33.9
6H	28.7	30.0	29.1	30.3	30.7	33.5	34.8	33.9	35.2	35.6
8H	28.8	30.1	29.2	30.4	30.8	34.4	35.7	34.8	36.1	36.4
12H	28.8	30.1	29.3	30.5	30.9	35.4	36.7	35.8	37.0	37.4
4H 2H	27.0	28.5	27.4	28.8	29.1	28.2	29.6	28.6	30.0	30.3
3H	28.9	30.2	29.3	30.5	30.9	31.2	32.4	31.6	32.8	33.2
4H	29.7	30.9	30.2	31.3	31.7	32.9	34.1	33.3	34.5	34.9
6H	30.4	31.4	30.9	31.9	32.3	34.8	35.9	35.3	36.3	36.7
8H	30.6	31.6	31.1	32.1	32.5	35.8	36.8	36.3	37.3	37.8
12H	30.8	31.7	31.3	32.2	32.7	37.0	37.9	37.5	38.4	38.9
8H 4H	30.8	31.8	31.3	32.2	32.7	33.3	34.3	33.8	34.7	35.2
6H	31.9	32.7	32.4	33.2	33.7	35.5	36.4	36.0	36.8	37.4
8H	32.3	33.1	32.9	33.6	34.1	36.8	37.5	37.3	38.0	38.6
12H	32.7	33.4	33.2	33.9	34.4	38.2	38.9	38.7	39.4	39.9
12H 4H	31.1	32.1	31.6	32.5	33.0	33.4	34.3	33.8	34.7	35.2
6H	32.4	33.2	33.0	33.7	34.2	35.7	36.4	36.2	36.9	37.5
8H	33.1	33.8	33.6	34.3	34.8	37.0	37.7	37.6	38.2	38.8
Variations with the observer position at spacings(CIE Pub.117):										
S = 1.0H	+ 0.1 / - 0.1					+ 0.1 / - 0.1				
1.5H	+ 0.2 / - 0.3					+ 0.2 / - 0.3				
2.0H	+ 0.2 / - 0.4					+ 0.2 / - 0.4				

CIE Pub.117, 497.5 lm Total Lamp Luminous Flux Correct (8log(F/F0) = -2.4)  
 Area: 0.005 m2

C Range: 0 - 360DEG  
 C Interval: 22.5DEG  
 Test Speed: HIGH  
 Temperature:25.3DEG  
 Operators:YSL  
 Test Date:2021-06-30

Range: 0 - 180DEG  
 Interval: 2.0DEG  
 Test System:EVERFINE GO-2000B\_V1 SYSTEM V2.00.450  
 Humidity:65.0%  
 Test Distance:5.749m [K=1.0000]  
 Remarks:

**UTILIZATION FACTORS TABLE**

Test:U:23.998V I:0.2053A P:5.0000W PF:1.0000 Freq:0Hz Lamp Flux:1.03638x480 lm		
NAME: 127-157	TYPE:	WEIGHT:
SPEC.:	DIM.:	SERIAL No.: 1
MFR.: Tronix Lighting	SUR.: 0.005*1	Shielding Angle:

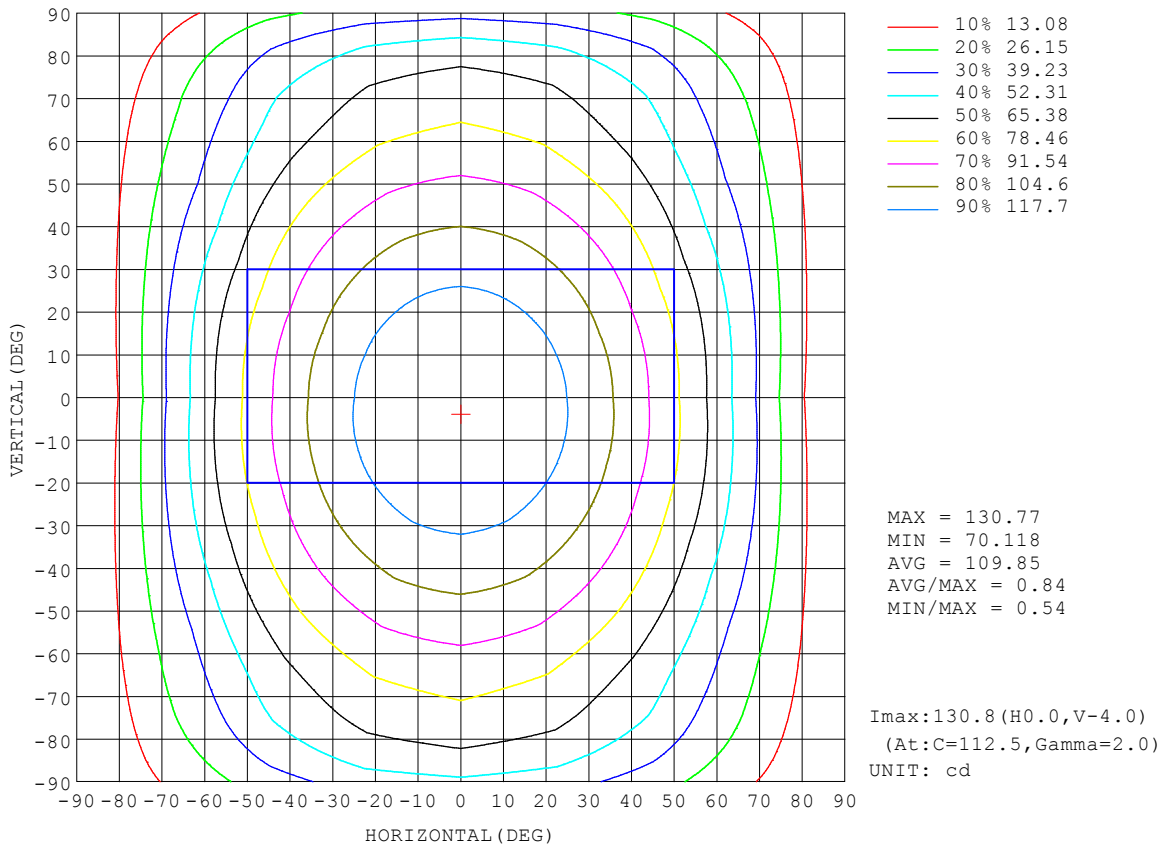
REFLECTANCE										
Ceiling	0.8	0.8	0.8	0.7	0.7	0.7	0.5	0.5	0.5	0
Walls	0.7	0.5	0.3	0.7	0.5	0.3	0.7	0.5	0.3	0
Working plane	0.2	0.2	0.2	0.2	0.2	0.2	0.2	0.2	0.2	0
ROOM INDEX	UTILIZATION FACTORS (PERCENT) $k(RI) \times RCR = 5$									
k = 0.60	52	39	32	51	39	32	50	39	32	25
0.80	61	48	40	60	48	40	58	47	40	32
1.00	69	57	48	68	56	48	65	57	47	39
1.25	76	64	56	74	63	55	71	61	54	46
1.50	81	69	61	79	68	61	76	66	59	51
2.00	88	78	70	86	76	69	82	74	67	58
2.50	93	83	75	90	81	74	86	78	72	62
3.00	96	88	80	94	86	79	89	82	77	67
4.00	101	93	87	98	91	86	93	88	83	72
5.00	104	97	92	101	95	90	96	91	87	76
ROOM INDEX	UF(total)									Direct
According to DIN EN 13032-2 2004			Suspended				SHRNOM = 1.25			

C Range: 0 - 360DEG  
 C Interval: 22.5DEG  
 Test Speed: HIGH  
 Temperature:25.3DEG  
 Operators:YSL  
 Test Date:2021-06-30

Range: 0 - 180DEG  
 Interval: 2.0DEG  
 Test System:EVERFINE GO-2000B\_V1 SYSTEM V2.00.450  
 Humidity:65.0%  
 Test Distance:5.749m [K=1.0000]  
 Remarks:

**ISOCANDELA DIAGRAM**

Test:U:23.998V I:0.2053A P:5.0000W PF:1.0000 Freq:0Hz Lamp Flux:1.03638x480 lm		
NAME: 127-157	TYPE:	WEIGHT:
SPEC.:	DIM.:	SERIAL No.: 1
MFR.: Tronix Lighting	SUR.: 0.005*1	Shielding Angle:



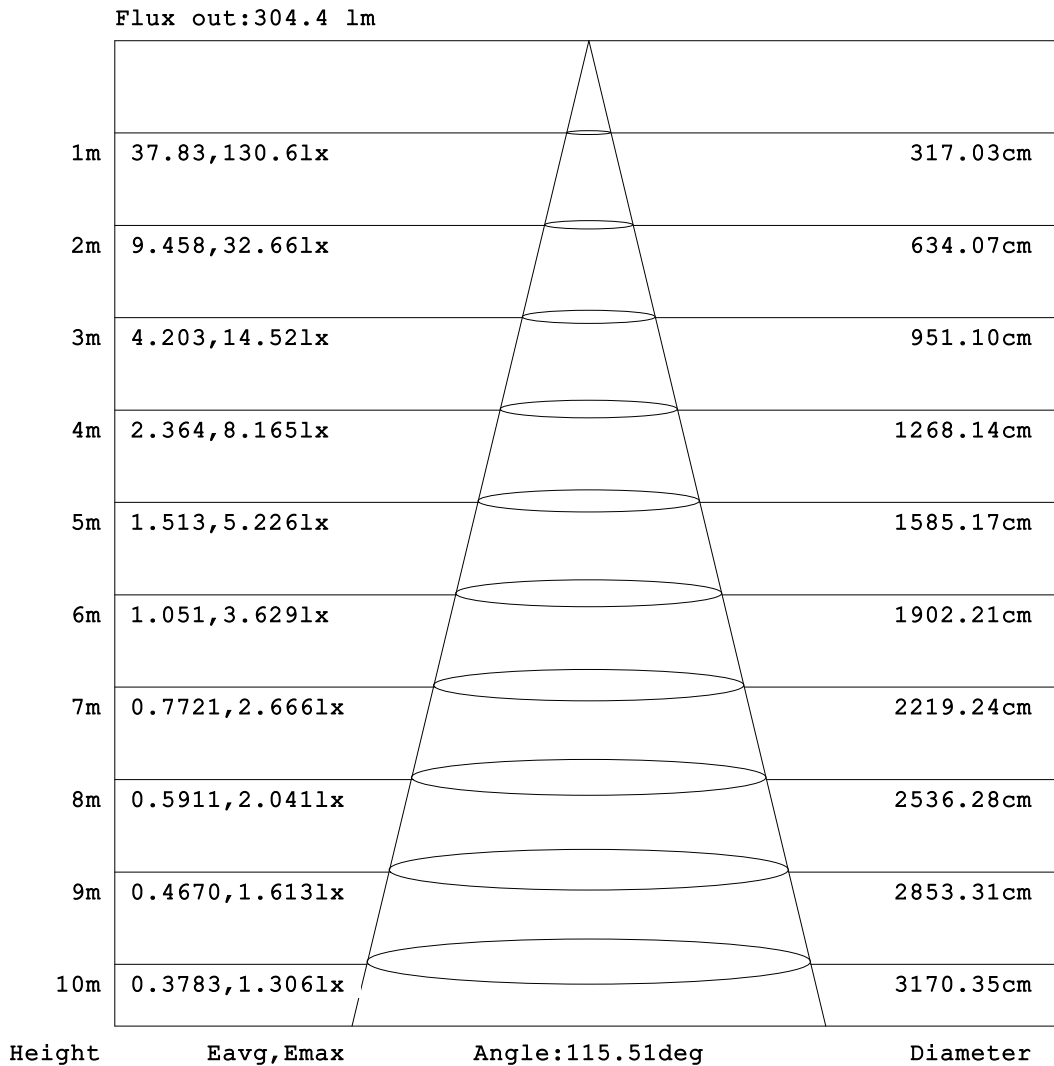
C Range: 0 - 360DEG  
 C Interval: 22.5DEG  
 Test Speed: HIGH  
 Temperature:25.3DEG  
 Operators:YSL  
 Test Date:2021-06-30

Range: 0 - 180DEG  
 Interval: 2.0DEG  
 Test System:EVERFINE GO-2000B\_V1 SYSTEM V2.00.450  
 Humidity:65.0%  
 Test Distance:5.749m [K=1.0000]  
 Remarks:



**AAI Figure**

Test:U:23.998V I:0.2053A P:5.0000W PF:1.0000 Freq:0Hz Lamp Flux:1.03638x480 lm		
NAME: 127-157	TYPE:	WEIGHT:
SPEC.:	DIM.:	SERIAL No.: 1
MFR.: Tronix Lighting	SUR.: 0.005*1	Shielding Angle:



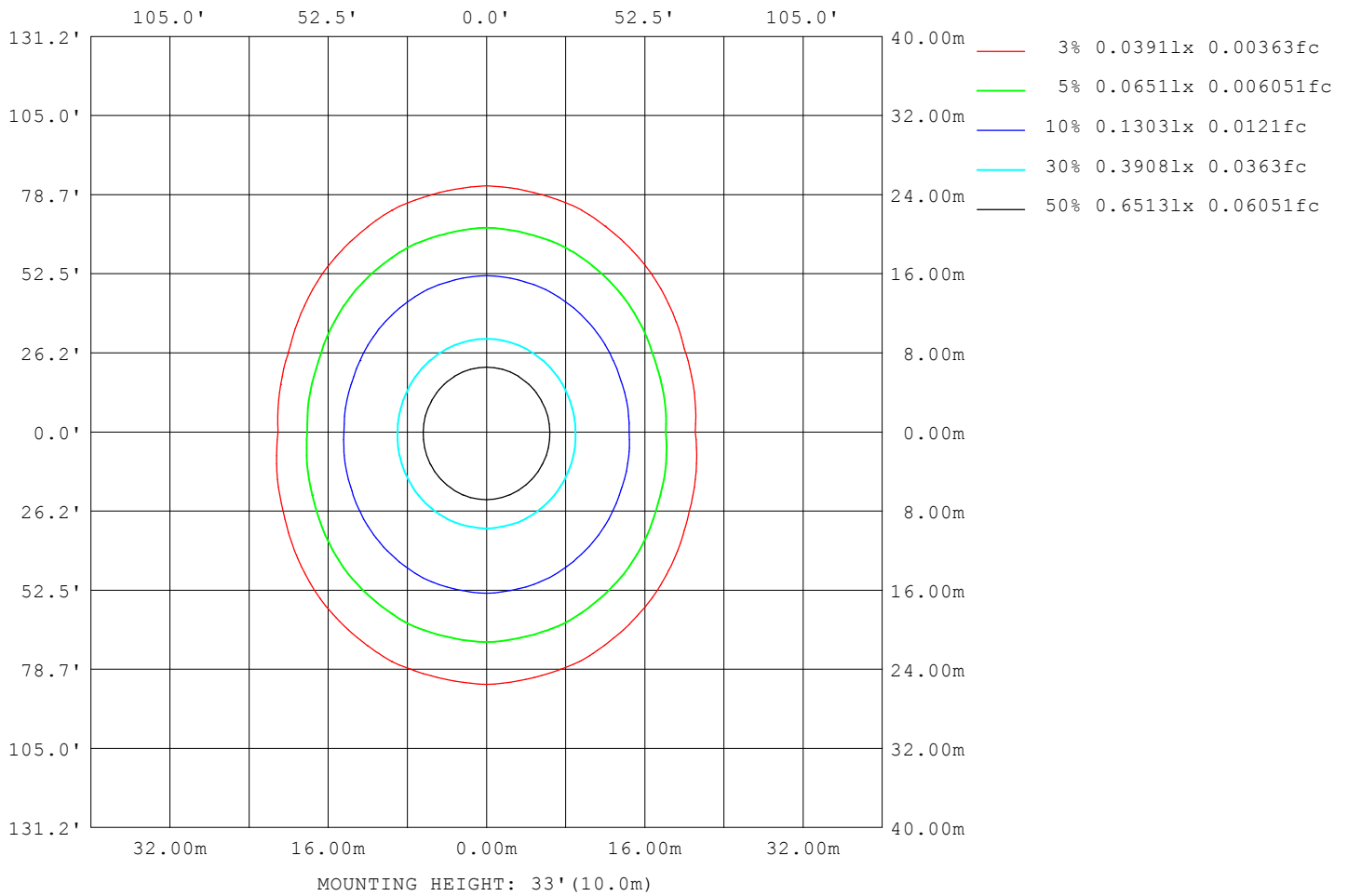
Note: The Curves indicate the illuminated area and the average illumination when the luminaire is at different distance.

C Range: 0 - 360DEG  
 C Interval: 22.5DEG  
 Test Speed: HIGH  
 Temperature: 25.3DEG  
 Operators: YSL  
 Test Date: 2021-06-30

Range: 0 - 180DEG  
 Interval: 2.0DEG  
 Test System: EVERFINE GO-2000B\_V1 SYSTEM V2.00.450  
 Humidity: 65.0%  
 Test Distance: 5.749m [K=1.0000]  
 Remarks:

**ISOLUX DIAGRAM**

Test:U:23.998V I:0.2053A P:5.0000W PF:1.0000 Freq:0Hz Lamp Flux:1.03638x480 lm		
NAME: 127-157	TYPE:	WEIGHT:
SPEC.:	DIM.:	SERIAL No.: 1
MFR.: Tronix Lighting	SUR.: 0.005*1	Shielding Angle:



C Range: 0 - 360DEG  
 C Interval: 22.5DEG  
 Test Speed: HIGH  
 Temperature:25.3DEG  
 Operators:YSL  
 Test Date:2021-06-30

Range: 0 - 180DEG  
 Interval: 2.0DEG  
 Test System:EVERFINE GO-2000B\_V1 SYSTEM V2.00.450  
 Humidity:65.0%  
 Test Distance:5.749m [K=1.0000]  
 Remarks:

**LED Avg.L Report**

Test:U:23.998V I:0.2053A P:5.0000W PF:1.0000 Freq:0Hz Lamp Flux:1.03638x480 lm		
NAME: 127-157	TYPE:	WEIGHT:
SPEC.:	DIM.:	SERIAL No.: 1
MFR.: Tronix Lighting	SUR.: 0.005*1	Shielding Angle:

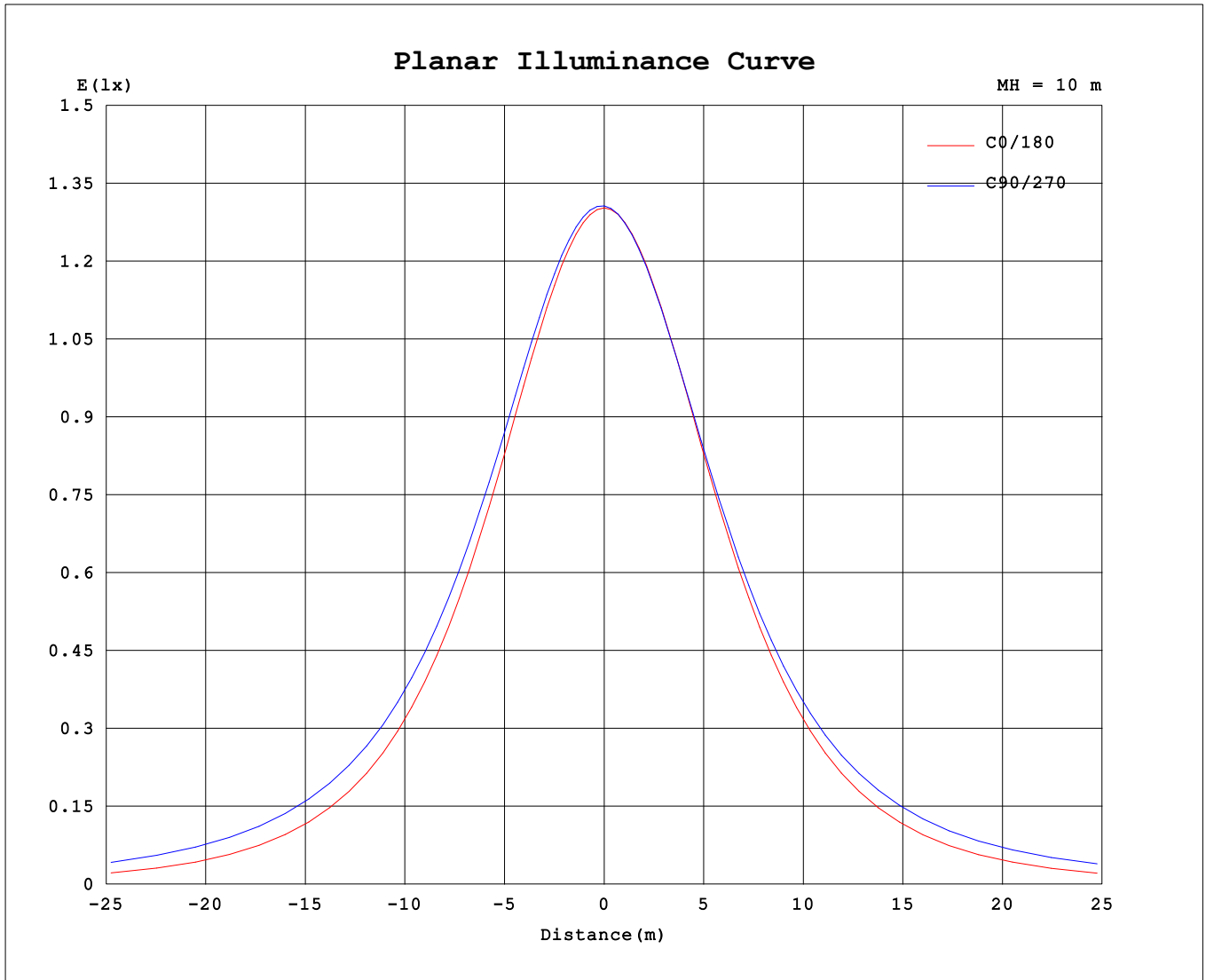
AvgL	cd/m2
L_0~180 (65) av	23070
L_0~180 (75) av	19381
L_0~180 (85) av	10875
L_90~270 (65) av	38291
L_90~270 (75) av	55207
L_90~270 (85) av	127178
L_45 (65) av	31903
L_45 (75) av	42756
L_45 (85) av	92120

Standard: GB/T 29293-2012

C Range: 0 - 360DEG  
 C Interval: 22.5DEG  
 Test Speed: HIGH  
 Temperature:25.3DEG  
 Operators:YSL  
 Test Date:2021-06-30

Range: 0 - 180DEG  
 Interval: 2.0DEG  
 Test System:EVERFINE GO-2000B\_V1 SYSTEM V2.00.450  
 Humidity:65.0%  
 Test Distance:5.749m [K=1.0000]  
 Remarks:

**Planar Illuminance Curve**



C Range: 0 - 360DEG  
 C Interval: 22.5DEG  
 Test Speed: HIGH  
 Temperature: 25.3DEG  
 Operators: YSL  
 Test Date: 2021-06-30

Range: 0 - 180DEG  
 Interval: 2.0DEG  
 Test System: EVERFINE GO-2000B\_V1 SYSTEM V2.00.450  
 Humidity: 65.0%  
 Test Distance: 5.749m [K=1.0000]  
 Remarks:

LUMINOUS DISTRIBUTION INTENSITY DATA

Test:U:23.998V I:0.2053A P:5.0000W PF:1.0000 Freq:0Hz Lamp Flux:1.03638x480 lm		
NAME: 127-157	TYPE:	WEIGHT:
SPEC.:	DIM.:	SERIAL No.: 1
MFR.: Tronix Lighting	SUR.: 0.005*1	Shielding Angle:

Table--1

UNIT: cd

C (DEG) □ (DEG)	0	22.5	45	67.5	90	112.5	135	157.5	180	202.5	225	247.5	270	292.5	315	337.5			
0	130	130	130	130	130	130	130	130	130	130	130	130	130	130	130	130			
5	130	130	130	131	131	131	130	130	130	130	130	130	130	130	130	130			
10	128	129	129	130	130	130	129	129	128	128	128	128	128	128	128	128			
15	126	127	128	128	129	128	128	127	126	126	126	126	126	126	126	126			
20	122	123	124	125	126	126	125	123	122	122	122	122	122	122	122	122			
25	119	120	121	123	123	123	122	120	119	118	118	119	119	119	118	118			
30	112	114	116	118	119	118	116	114	112	112	112	114	114	113	112	112			
35	107	109	112	115	116	115	112	109	107	107	108	110	110	110	108	107			
40	98.3	101	105	109	111	109	105	101	98.3	98.1	101	103	104	103	101	98.0			
45	91.8	94.8	99.8	105	107	105	100	95.1	91.7	91.7	95.3	98.8	100	98.6	95.2	91.7			
50	80.9	84.8	91.6	97.9	100	98.4	92.3	85.1	80.8	81.5	86.7	91.6	93.6	91.5	86.7	81.6			
55	73.0	77.7	85.9	93.2	96.0	93.7	86.6	78.0	72.8	74.2	80.8	86.7	89.1	86.7	80.9	74.4			
60	60.3	66.4	77.0	85.9	89.3	86.5	77.7	66.8	60.0	62.7	71.8	79.5	82.6	79.6	72.1	63.1			
65	51.2	58.7	71.1	81.2	85.0	81.8	71.9	59.1	50.9	54.8	66.0	75.1	78.7	75.2	66.4	55.5			
70	37.2	47.0	62.7	74.7	79.2	75.3	63.5	47.6	36.7	43.3	58.1	69.7	73.6	69.9	58.8	44.2			
75	27.7	39.6	57.7	71.0	75.5	71.6	58.7	40.3	27.2	36.2	54.2	65.5	69.5	65.6	54.9	37.4			
80	14.1	30.1	50.9	63.8	68.5	64.5	52.0	31.2	13.6	27.7	46.5	57.5	61.4	57.6	46.9	29.4			
85	6.50	25.2	44.6	57.7	62.4	58.5	45.7	26.2	6.06	22.2	39.1	49.4	52.9	49.1	39.5	23.4			
90	0.23	14.2	32.3	45.2	49.9	46.0	33.4	15.0	0.20	9.22	23.1	31.9	35.1	31.5	23.0	9.99			
95	0.28	4.89	21.3	34.0	38.5	34.8	22.5	5.62	0.25	0.41	1.42	8.52	12.0	7.53	1.74	0.41			
100	0.40	0.51	3.88	14.9	18.9	15.7	4.81	0.54	0.35	0.46	0.68	0.82	0.87	0.83	0.68	0.47			
105	0.50	0.58	0.79	3.40	6.56	4.07	0.80	0.61	0.43	0.53	0.71	0.86	0.91	0.87	0.74	0.54			
110	0.66	0.70	0.86	0.97	1.01	0.98	0.87	0.72	0.57	0.64	0.79	0.92	0.97	0.94	0.83	0.65			
115	0.76	0.78	0.92	1.02	1.05	1.02	0.92	0.79	0.67	0.71	0.84	0.96	1.01	0.99	0.88	0.73			
120	0.90	0.91	1.02	1.10	1.12	1.09	1.00	0.91	0.80	0.82	0.92	1.02	1.07	1.06	0.97	0.85			
125	1.00	1.00	1.08	1.15	1.17	1.14	1.06	0.99	0.89	0.90	0.98	1.06	1.11	1.10	1.03	0.93			
130	1.12	1.14	1.18	1.22	1.23	1.21	1.14	1.10	1.01	1.01	1.06	1.13	1.16	1.16	1.12	1.05			
135	1.20	1.21	1.24	1.27	1.28	1.25	1.21	1.17	1.09	1.08	1.11	1.17	1.20	1.21	1.17	1.12			
140	1.30	1.32	1.34	1.35	1.34	1.32	1.29	1.26	1.20	1.17	1.19	1.24	1.24	1.28	1.26	1.23			
145	1.36	1.39	1.40	1.40	1.38	1.37	1.33	1.32	1.26	1.23	1.24	1.28	1.28	1.32	1.32	1.30			
150	1.45	1.48	1.48	1.47	1.45	1.44	1.41	1.41	1.36	1.33	1.32	1.35	1.33	1.38	1.40	1.39			
155	1.51	1.55	1.54	1.51	1.51	1.49	1.46	1.48	1.43	1.39	1.38	1.40	1.39	1.42	1.45	1.46			
160	1.60	1.63	1.62	1.59	1.60	1.55	1.55	1.57	1.53	1.50	1.47	1.48	1.48	1.50	1.54	1.56			
165	1.66	1.68	1.67	1.63	1.66	1.60	1.61	1.64	1.61	1.57	1.54	1.54	1.55	1.55	1.60	1.64			
170	1.76	1.77	1.75	1.72	1.71	1.69	1.70	1.74	1.72	1.69	1.66	1.64	1.64	1.65	1.70	1.74			
175	1.82	1.81	1.80	1.78	1.76	1.75	1.77	1.80	1.78	1.76	1.73	1.72	1.72	1.71	1.76	1.80			
180	1.87	1.85	1.84	1.82	1.83	1.81	1.85	1.88	1.87	1.86	1.84	1.82	1.82	1.81	1.85	1.89			

C Range: 0 - 360DEG  
 C Interval: 22.5DEG  
 Test Speed: HIGH  
 Temperature:25.3DEG  
 Operators:YSL  
 Test Date:2021-06-30

□ Range: 0 - 180DEG  
 □ Interval: 2.0DEG  
 Test System:EVERFINE GO-2000B\_V1 SYSTEM V2.00.450  
 Humidity:65.0%  
 Test Distance:5.749m [K=1.0000]  
 Remarks: