



Features

- Ceiling Recessed LED Linear luminaire (lay-in), with Louvre + MPO diffuser, Direct Light Distribution, Luminaire Dimensions: 1196x296x52mm, Sylvania White body colour, IP20, IK07, DALI + Emergency 3 hours, Low LED flicker (+/-5%), Warm White (3000K), LED Colour Temperature, 3572lm, 33W, 108lm/W, CRI>80, 3 SDCM (3-step MacAdam ellipse) LED Colour Consistency, UGR<18, Luminance at 65° < 3000 cd/m², Lifespan: 96,000 hours L80B20, Glow Wire Test 850°C, Quick and easy electrical connection with direct access to push-connectors on top, 2 x metallic safety cables (1.5m) included, the luminaire can be covered with building insulation of Glass Wool type.

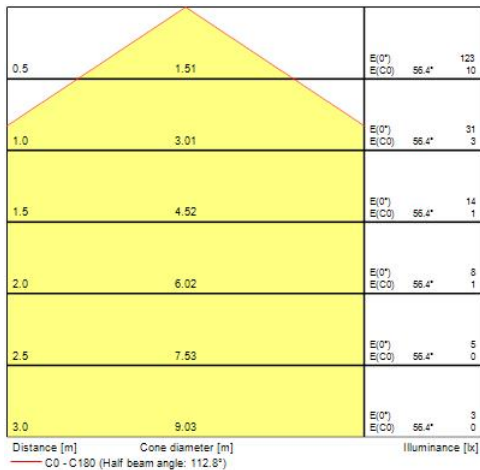
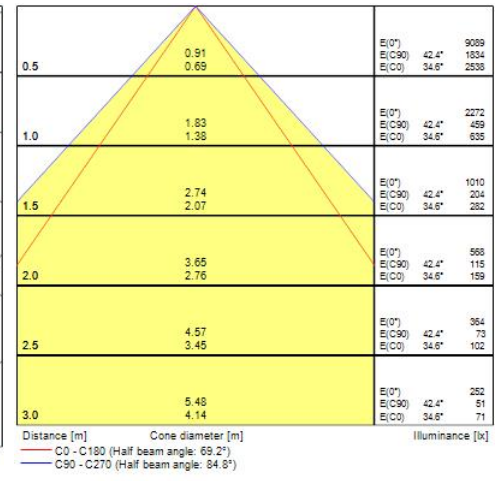
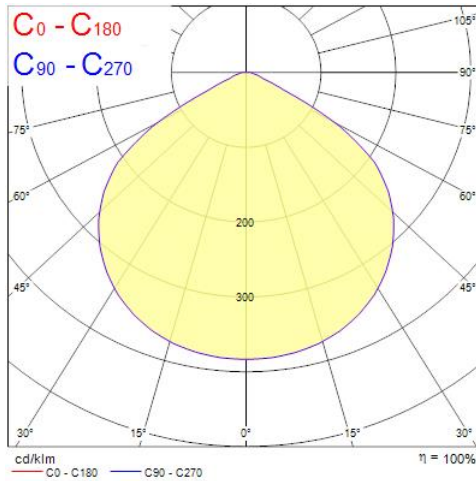
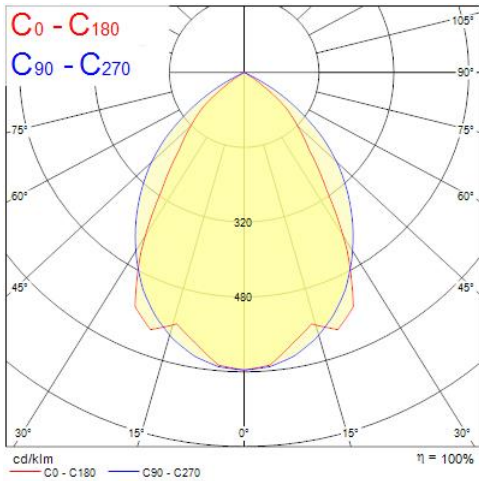
Product Overview

Product name	RANA NEO 3500LM REC 1200x300 830 DALI EM 1L WHITE
Technology	LED (3 SDCM)
Cap/Base	N/A
Housing	Steel
Mount	Ceiling recessed mounting
Fixture luminous flux (lm)	3572
Luminaire efficacy (lm/W)	108
Colour temperature (K)	3000
Light colour	Warm White
CRI (Ra)	80
Colour Variation Initial (SDCM)	3
Glare control	< 18
Photobiological Risk Group	RG0
Luminous flux (emergency) (lm)	80
Total power consumption (W)	33

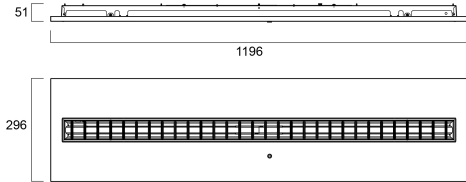
RANA NEO 3500LM REC 1200x300 830 DALI EM 1L WHITE 0052596

Electrical protection	Class I
Control gear type	LED driver constant current
LED Flickering Rate	Ultra low (5% or less)
Housing colour	RAL 9016 - Traffic white / Bezel
IP rating	IP20
IK rating	IK07
Product EAN number	5410288525969
Warranty	5 years

Photometry



Technical drawings



Data table

GENERAL DATA

Product name	RANA NEO 3500LM REC 1200x300 830 DALI EM 1L WHITE
Technology	LED (3 SDCM)
Cap/Base	N/A
Housing	Steel
Mount	Ceiling recessed mounting
Performance ambient temperature Tq (°C)	25
Warranty	5 years

OPTICAL DATA

Fixture luminous flux (lm)	3572
Luminaire efficacy (lm/W)	108
Colour temperature (K)	3000
Light colour	Warm White
CRI (Ra)	80
Colour Variation Initial (SDCM)	3
Glare control	< 18
Photobiological Risk Group	RG0
Luminous flux (emergency) (lm)	80
Emergency duration (h)	3

ELECTRICAL DATA

Total power consumption (W)	33
Primary Supply/Product voltage - min (V)	220
Lamp power factor	0.96
Electrical protection	Class I
Control gear required	No
Control gear type	LED driver constant current
Drive current (mA)	300
Inrush Current (A)	22.4
Inrush Duration (μ s)	176
Glow Wire Test ($^{\circ}$ C)	850
Energy Efficiency Class (A->G) of contained light source	C
Nominal Frequency (Hz)	50/60Hz
LED Flickering Rate	Ultra low (5% or less)
Max. products per 10A C Breaker	21
Max. products per 20A B Breaker	27

LIFETIME DATA

Lifespan L70 B50	100000
Lifespan L80 B20	96000

PHYSICAL DATA

Housing colour	RAL 9016 - Traffic white / Bezel
IP rating	IP20
IK rating	IK07
Diffuser finish	Matt/satinized
Diffuser material	PC Polycarbonate
Nominal Product Length (mm)	1196
Nominal Product Width (mm)	296
Weight (kg)	5.5

PACKAGING

RANA NEO 3500LM REC 1200x300 830 DALI EM 1L WHITE 0052596

Single packaging type	Carton
Product EAN number	5410288525969
Packaging single width (cm)	6.5
Packaging single depth (cm)	32.0
DUN14 (outer)	05410288525969
Packaging outer length / height (cm)	124.5

SAFETY DATA

Special purpose lamp	No
Dry applications use only	No
Suitable for household illumination	No