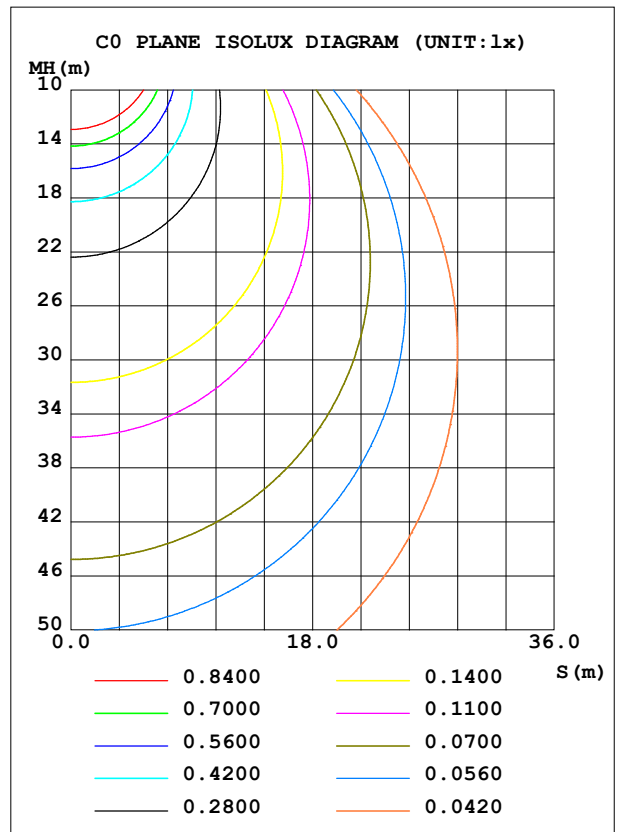
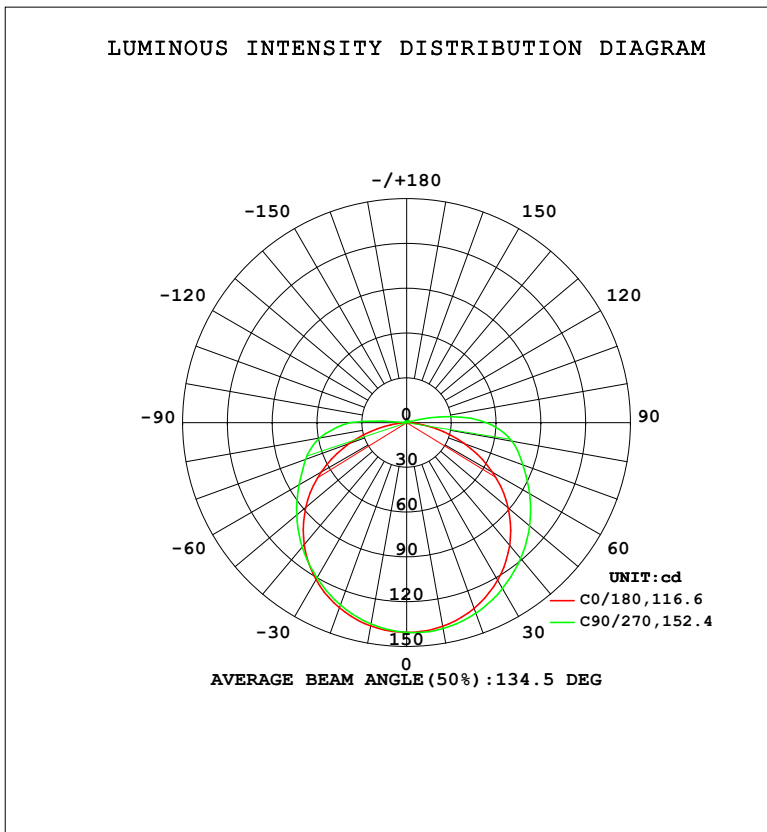


LUMINAIRE PHOTOMETRIC TEST REPORT

Test:U:23.998V I:0.2059A P:4.9412W PF:1.0000 Freq:0Hz Lamp Flux:1.10005x480 lm		
NAME: 127-156	TYPE:	WEIGHT:
SPEC.:	DIM.:	SERIAL No.: 1
MFR.: Tronix Lighting	SUR.: 0.005*1	Shielding Angle:

DATA OF LAMP		PHOTOMETRIC DATA			
MODEL		Imax (cd)	140.8	S/MH (C0/180)	1.28
NOMINAL POWER (W)	5	LOR (%)	100.0	S/MH (C90/270)	1.28
RATED VOLTAGE (V)	24	TOTAL FLUX (lm)	528.02	<input type="checkbox"/> UP, DN (C0-180)	2.9,50.1
NOMINAL FLUX (lm)	1.10005	CIE CLASS	DIRECT	<input type="checkbox"/> UP, DN (C180-360)	1.3,45.7
LAMPS INSIDE	480	<input type="checkbox"/> up (%)	4.2	CIBSE SHR NOM	1.50
TEST VOLTAGE (V)	24	<input type="checkbox"/> down (%)	95.8	CIBSE SHR MAX	1.50



C Range: 0 - 360DEG
 C Interval: 22.5DEG
 Test Speed: HIGH
 Temperature: 25.3DEG
 Operators: YSL
 Test Date: 2021-06-30

Range: 0 - 180DEG
 Interval: 2.0DEG
 Test System: EVERFINE GO-2000B_V1 SYSTEM V2.00.450
 Humidity: 65.0%
 Test Distance: 5.749m [K=1.0000]
 Remarks:

ZONAL FLUX DIAGRAM

ZONAL FLUX DIAGRAM:

°	C0	C45	C90	C135	C180	C225	C270	C315	°	□ zone	□ total	%lum,lamp
10	138.5	139.6	140.1	139.6	138.3	137.4	137.0	137.4	0- 10	13.32	13.32	2.52,2.52
20	132.3	134.7	135.9	134.7	132.0	130.4	129.9	130.4	10- 20	38.41	51.73	9.8,9.8
30	121.9	126.0	128.4	126.0	121.4	119.7	120.1	119.8	20- 30	59.10	110.8	21,21
40	107.4	113.9	118.8	113.9	106.8	106.0	108.8	106.3	30- 40	73.21	184.0	34.9,34.9
50	88.81	99.51	107.5	99.63	88.26	90.37	96.20	90.96	40- 50	79.50	263.5	49.9,49.9
60	66.49	83.41	95.05	83.71	65.96	73.54	83.25	74.36	50- 60	77.65	341.2	64.6,64.6
70	41.17	67.09	82.88	67.66	40.64	57.62	72.11	58.70	60- 70	68.87	410.1	77.7,77.7
80	15.65	53.36	71.64	54.19	15.24	44.14	58.99	45.27	70- 80	56.06	466.1	88.3,88.3
90	0.2626	34.55	53.42	35.72	0.2429	24.30	38.04	24.93	80- 90	39.63	505.8	95.8,95.8
100	0.4356	5.496	22.52	6.530	0.3789	0.7257	1.293	0.7610	90-100	14.90	520.7	98.6,98.6
110	0.7118	0.9254	1.317	0.8988	0.6243	0.8447	1.047	0.8753	100-110	2.113	522.8	99,99
120	0.9785	1.075	1.159	1.046	0.8767	0.9992	1.142	1.044	110-120	0.9518	523.7	99.2,99.2
130	1.214	1.246	1.278	1.208	1.108	1.144	1.245	1.201	120-130	1.005	524.7	99.4,99.4
140	1.405	1.425	1.406	1.370	1.301	1.294	1.340	1.363	130-140	0.9932	525.7	99.6,99.6
150	1.567	1.586	1.539	1.505	1.479	1.435	1.442	1.513	140-150	0.9004	526.6	99.7,99.7
160	1.724	1.732	1.703	1.664	1.660	1.592	1.601	1.665	150-160	0.7326	527.4	99.9,99.9
170	1.891	1.881	1.833	1.838	1.848	1.789	1.777	1.831	160-170	0.4935	527.8	100,100
180	2.017	1.977	1.964	1.993	2.012	1.977	1.964	1.993	170-180	0.1807	528.0	100,100
DEG	LUMINOUS INTENSITY:cd									UNIT:lm		

Conical surface Flux(90deg): 231.52 lm

%lum = 43.8%

%lamp = 43.8%

Conical surface Flux(120deg): 341.2 lm

%lum = 64.6%

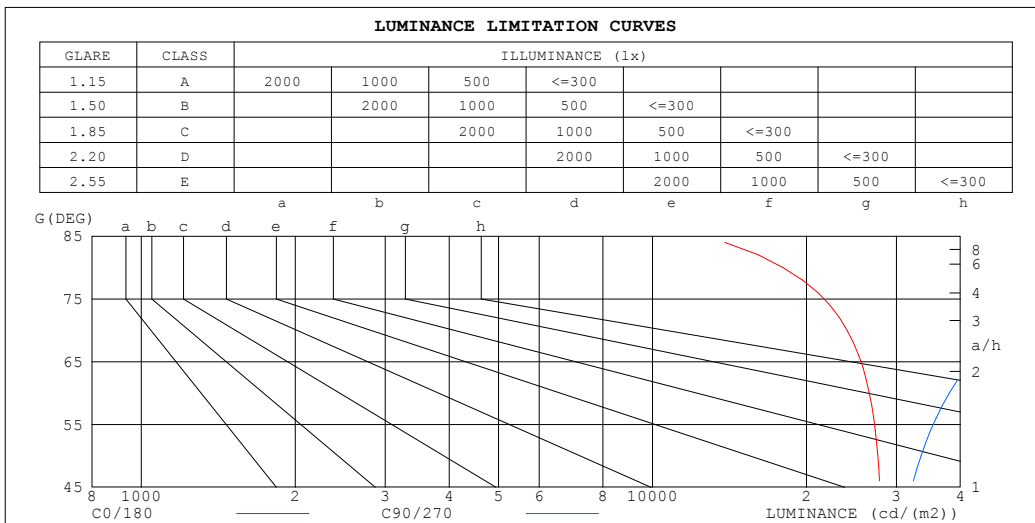
%lamp = 64.6%

C Range: 0 - 360DEG
 C Interval: 22.5DEG
 Test Speed: HIGH
 Temperature:25.3DEG
 Operators:YSL
 Test Date:2021-06-30

□ Range: 0 - 180DEG
 □ Interval: 2.0DEG
 Test System:EVERFINE GO-2000B_V1 SYSTEM V2.00.450
 Humidity:65.0%
 Test Distance:5.749m [K=1.0000]
 Remarks:

LUMINANCE LIMITATION CURVES

Test:U:23.998V I:0.2059A P:4.9412W PF:1.0000 Freq:0Hz		
Lamp Flux:1.10005x480 lm		
NAME: 127-156	TYPE:	WEIGHT:
SPEC.:	DIM.:	SERIAL No.: 1
MFR.: Tronix Lighting	SUR.: 0.005*1	Shielding Angle:



LUMINANCE cd/(m2)		
G (DEG)	C0/180	C90/270
85	16619	150742
80	18003	82622
75	23682	60845
70	24040	48533
65	26772	42678
60	26555	38073
55	27960	35826
50	27592	33502
45	28361	32436

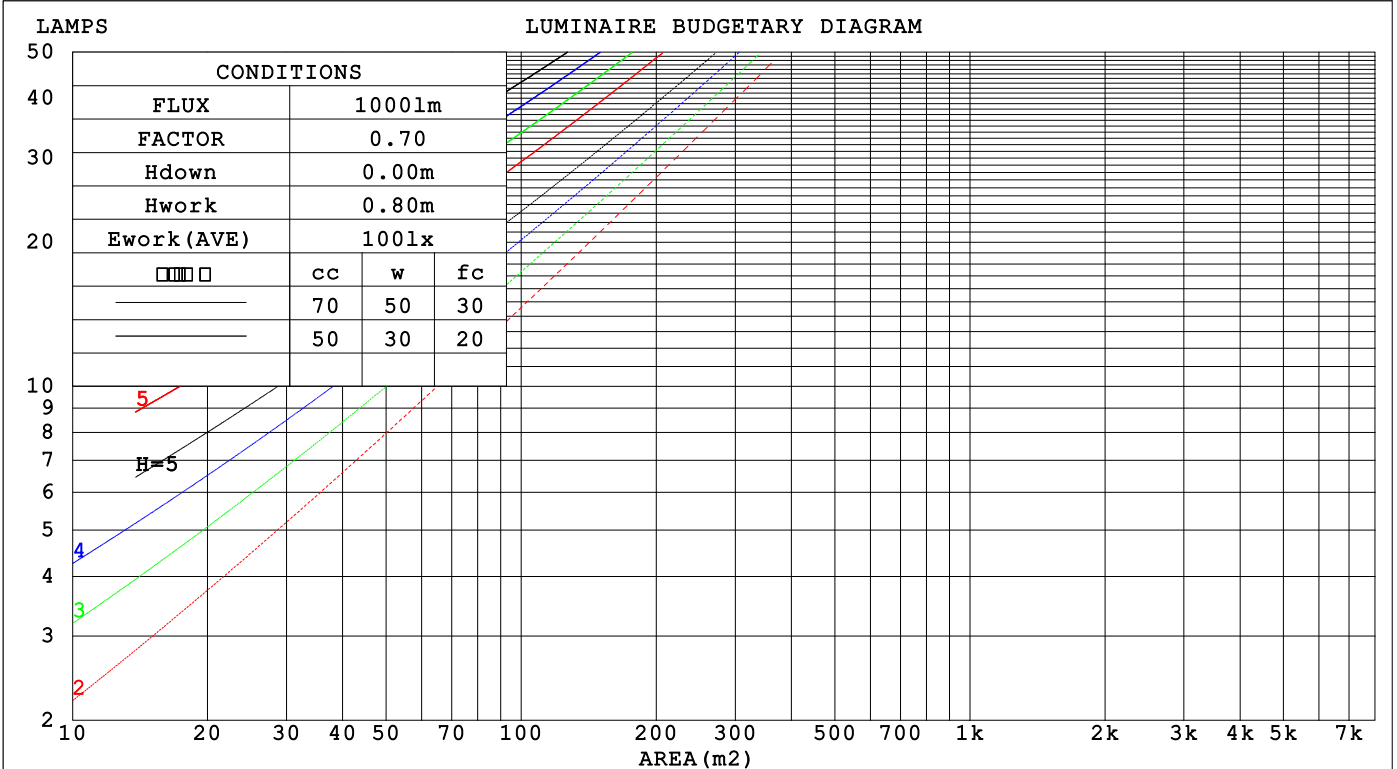
C Range: 0 - 360DEG
 C Interval: 22.5DEG
 Test Speed: HIGH
 Temperature:25.3DEG
 Operators:YSL
 Test Date:2021-06-30

Range: 0 - 180DEG
 Interval: 2.0DEG
 Test System:EVERFINE GO-2000B_V1 SYSTEM V2.00.450
 Humidity:65.0%
 Test Distance:5.749m [K=1.0000]
 Remarks:

CU AND LUMINAIRE BUDGETARY ESTIMATE DIAGRAM

Test:U:23.998V I:0.2059A P:4.9412W PF:1.0000 Freq:0Hz Lamp Flux:1.10005x480 lm		
NAME: 127-156	TYPE:	WEIGHT:
SPEC.:	DIM.:	SERIAL No.: 1
MFR.: Tronix Lighting	SUR.: 0.005*1	Shielding Angle:

□cc	80%			70%			50%			30%			10%			0
□w	50%	30%	10%	50%	30%	10%	50%	30%	10%	50%	30%	10%	50%	30%	10%	0
□fc	20%			20%			20%			20%			20%			0
RCR	RCR:Room Cavity Ratio															
	Coefficients of Utilization(CU)															
0.0	1.18	1.18	1.18	1.15	1.15	1.15	1.09	1.09	1.09	1.03	1.03	1.03	.98	.98	.98	.96
1.0	.99	.93	.88	.96	.91	.86	.91	.87	.83	.86	.83	.80	.82	.79	.76	.74
2.0	.84	.76	.70	.82	.75	.68	.78	.71	.66	.74	.68	.64	.70	.66	.62	.59
3.0	.73	.64	.57	.71	.63	.56	.68	.60	.54	.64	.58	.53	.61	.56	.51	.49
4.0	.64	.55	.47	.63	.54	.47	.60	.52	.45	.57	.50	.44	.54	.48	.43	.41
5.0	.57	.47	.40	.56	.47	.40	.53	.45	.39	.51	.44	.38	.48	.42	.37	.35
6.0	.51	.42	.35	.50	.41	.34	.48	.40	.34	.46	.38	.33	.44	.37	.32	.30
7.0	.46	.37	.30	.45	.36	.30	.43	.35	.30	.41	.34	.29	.40	.33	.29	.26
8.0	.42	.33	.27	.41	.33	.27	.40	.32	.26	.38	.31	.26	.36	.30	.26	.23
9.0	.39	.30	.24	.38	.30	.24	.36	.29	.24	.35	.28	.23	.34	.27	.23	.21
10.0	.36	.27	.22	.35	.27	.22	.34	.26	.21	.32	.26	.21	.31	.25	.21	.19



C Range: 0 - 360DEG
 C Interval: 22.5DEG
 Test Speed: HIGH
 Temperature:25.3DEG
 Operators:YSL
 Test Date:2021-06-30

□ Range: 0 - 180DEG
 □ Interval: 2.0DEG
 Test System:EVERFINE GO-2000B_V1 SYSTEM V2.00.450
 Humidity:65.0%
 Test Distance:5.749m [K=1.0000]
 Remarks:

WEC AND CCEC

Test:U:23.998V I:0.2059A P:4.9412W PF:1.0000 Freq:0Hz Lamp Flux:1.10005x480 lm		
NAME: 127-156	TYPE:	WEIGHT:
SPEC.:	DIM.:	SERIAL No.: 1
MFR.: Tronix Lighting	SUR.: 0.005*1	Shielding Angle:

<input type="checkbox"/> cc	80%			70%			50%			30%			10%			0
<input type="checkbox"/> w	50%	30%	10%	50%	30%	10%	50%	30%	10%	50%	30%	10%	50%	30%	10%	0
<input type="checkbox"/> fc	20%			20%			20%			20%			20%			0
RCR	RCR:Room Cavity Ratio						Wall Exitance Coefficients (WEC)									
0.0																
1.0	.391	.222	.070	.382	.218	.069	.366	.210	.067	.351	.203	.065	.338	.196	.063	
2.0	.340	.187	.057	.333	.183	.056	.318	.177	.055	.305	.171	.054	.293	.166	.052	
3.0	.303	.161	.048	.296	.159	.048	.283	.154	.047	.271	.149	.046	.260	.144	.045	
4.0	.273	.142	.042	.267	.140	.041	.255	.135	.040	.245	.131	.040	.235	.128	.039	
5.0	.248	.126	.037	.243	.125	.036	.232	.121	.036	.223	.118	.035	.214	.114	.034	
6.0	.227	.114	.033	.222	.112	.032	.213	.109	.032	.205	.106	.031	.197	.103	.031	
7.0	.210	.104	.029	.205	.102	.029	.197	.100	.029	.189	.097	.028	.182	.095	.028	
8.0	.194	.095	.027	.190	.094	.026	.183	.091	.026	.176	.089	.026	.169	.087	.025	
9.0	.181	.088	.024	.177	.086	.024	.171	.084	.024	.164	.082	.024	.158	.080	.023	
10.0	.169	.081	.023	.166	.080	.022	.160	.078	.022	.154	.077	.022	.149	.075	.021	

<input type="checkbox"/> cc	80%			70%			50%			30%			10%			0
<input type="checkbox"/> w	50%	30%	10%	50%	30%	10%	50%	30%	10%	50%	30%	10%	50%	30%	10%	0
<input type="checkbox"/> fc	20%			20%			20%			20%			20%			0
RCR	RCR:Room Cavity Ratio						Ceiling Cavity Exitance Coefficients (CCEC)									
0.0	.223	.223	.223	.190	.190	.190	.130	.130	.130	.075	.075	.075	.024	.024	.024	
1.0	.218	.188	.160	.187	.161	.138	.128	.111	.095	.074	.064	.056	.024	.021	.018	
2.0	.211	.164	.125	.181	.141	.108	.124	.098	.075	.072	.057	.044	.023	.018	.014	
3.0	.204	.147	.102	.175	.127	.089	.120	.088	.062	.069	.052	.037	.022	.017	.012	
4.0	.196	.134	.088	.168	.116	.076	.115	.081	.054	.067	.047	.032	.021	.015	.010	
5.0	.188	.124	.078	.161	.108	.067	.111	.075	.048	.064	.044	.028	.021	.014	.009	
6.0	.180	.116	.070	.155	.101	.061	.107	.070	.043	.062	.041	.026	.020	.014	.009	
7.0	.173	.109	.065	.149	.095	.057	.103	.066	.040	.060	.039	.024	.019	.013	.008	
8.0	.166	.104	.061	.143	.090	.053	.099	.063	.038	.057	.037	.022	.019	.012	.007	
9.0	.159	.099	.058	.137	.086	.050	.095	.060	.036	.055	.036	.021	.018	.012	.007	
10.0	.153	.094	.055	.132	.082	.048	.092	.058	.034	.053	.034	.020	.017	.011	.007	

C Range: 0 - 360DEG
 C Interval: 22.5DEG
 Test Speed: HIGH
 Temperature:25.3DEG
 Operators:YSL
 Test Date:2021-06-30

Range: 0 - 180DEG
 Interval: 2.0DEG
 Test System:EVERFINE GO-2000B_V1 SYSTEM V2.00.450
 Humidity:65.0%
 Test Distance:5.749m [K=1.0000]
 Remarks:

UGR(Unified Glare Rating) Table

Test:U:23.998V I:0.2059A P:4.9412W PF:1.0000 Freq:0Hz										
Lamp Flux:1.10005x480 lm										
NAME: 127-156					TYPE:			WEIGHT:		
SPEC.:					DIM.:			SERIAL No.: 1		
MFR.: Tronix Lighting					SUR.: 0.005*1			Shielding Angle:		
ceiling/cavity	0.7	0.7	0.5	0.5	0.3	0.7	0.7	0.5	0.5	0.3
walls	0.5	0.3	0.5	0.3	0.3	0.5	0.3	0.5	0.3	0.3
working plane	0.2	0.2	0.2	0.2	0.2	0.2	0.2	0.2	0.2	0.2
Room dimensions	Viewed crosswise					Viewed endwise				
x = 2H y = 2H	26.2	27.8	26.5	28.1	28.4	27.6	29.2	28.0	29.5	29.8
3H	27.8	29.3	28.2	29.6	29.9	30.3	31.7	30.6	32.1	32.4
4H	28.4	29.8	28.8	30.2	30.5	31.8	33.2	32.1	33.5	33.9
6H	28.9	30.2	29.3	30.6	30.9	33.4	34.7	33.8	35.1	35.5
8H	29.0	30.3	29.4	30.7	31.1	34.3	35.6	34.7	36.0	36.4
12H	29.1	30.3	29.5	30.7	31.1	35.3	36.6	35.8	37.0	37.4
4H 2H	27.2	28.6	27.6	29.0	29.3	28.3	29.7	28.7	30.0	30.4
3H	29.1	30.3	29.5	30.7	31.1	31.2	32.4	31.6	32.8	33.2
4H	29.9	31.1	30.4	31.5	31.9	32.9	34.0	33.3	34.4	34.8
6H	30.6	31.6	31.0	32.0	32.5	34.7	35.8	35.2	36.2	36.7
8H	30.8	31.8	31.3	32.2	32.7	35.8	36.7	36.3	37.2	37.7
12H	30.9	31.8	31.4	32.3	32.8	36.9	37.8	37.4	38.3	38.8
8H 4H	30.9	31.9	31.4	32.3	32.8	33.3	34.2	33.7	34.7	35.2
6H	31.9	32.8	32.4	33.2	33.8	35.5	36.3	36.0	36.8	37.3
8H	32.4	33.1	32.9	33.6	34.2	36.7	37.4	37.2	38.0	38.5
12H	32.7	33.4	33.3	33.9	34.5	38.1	38.8	38.7	39.3	39.9
12H 4H	31.2	32.1	31.7	32.6	33.1	33.3	34.2	33.8	34.7	35.2
6H	32.5	33.2	33.0	33.7	34.3	35.6	36.3	36.1	36.8	37.4
8H	33.1	33.8	33.7	34.3	34.9	37.0	37.6	37.5	38.1	38.7
Variations with the observer position at spacings(CIE Pub.117):										
S = 1.0H	+ 0.1 / - 0.1					+ 0.1 / - 0.1				
1.5H	+ 0.2 / - 0.3					+ 0.2 / - 0.3				
2.0H	+ 0.2 / - 0.4					+ 0.2 / - 0.4				

CIE Pub.117, 528.0 lm Total Lamp Luminous Flux Correct (8log(F/F0) = -2.2)
 Area: 0.005 m2

C Range: 0 - 360DEG
 C Interval: 22.5DEG
 Test Speed: HIGH
 Temperature:25.3DEG
 Operators:YSL
 Test Date:2021-06-30

Range: 0 - 180DEG
 Interval: 2.0DEG
 Test System:EVERFINE GO-2000B_V1 SYSTEM V2.00.450
 Humidity:65.0%
 Test Distance:5.749m [K=1.0000]
 Remarks:

UTILIZATION FACTORS TABLE

Test:U:23.998V I:0.2059A P:4.9412W PF:1.0000 Freq:0Hz Lamp Flux:1.10005x480 lm		
NAME: 127-156	TYPE:	WEIGHT:
SPEC.:	DIM.:	SERIAL No.: 1
MFR.: Tronix Lighting	SUR.: 0.005*1	Shielding Angle:

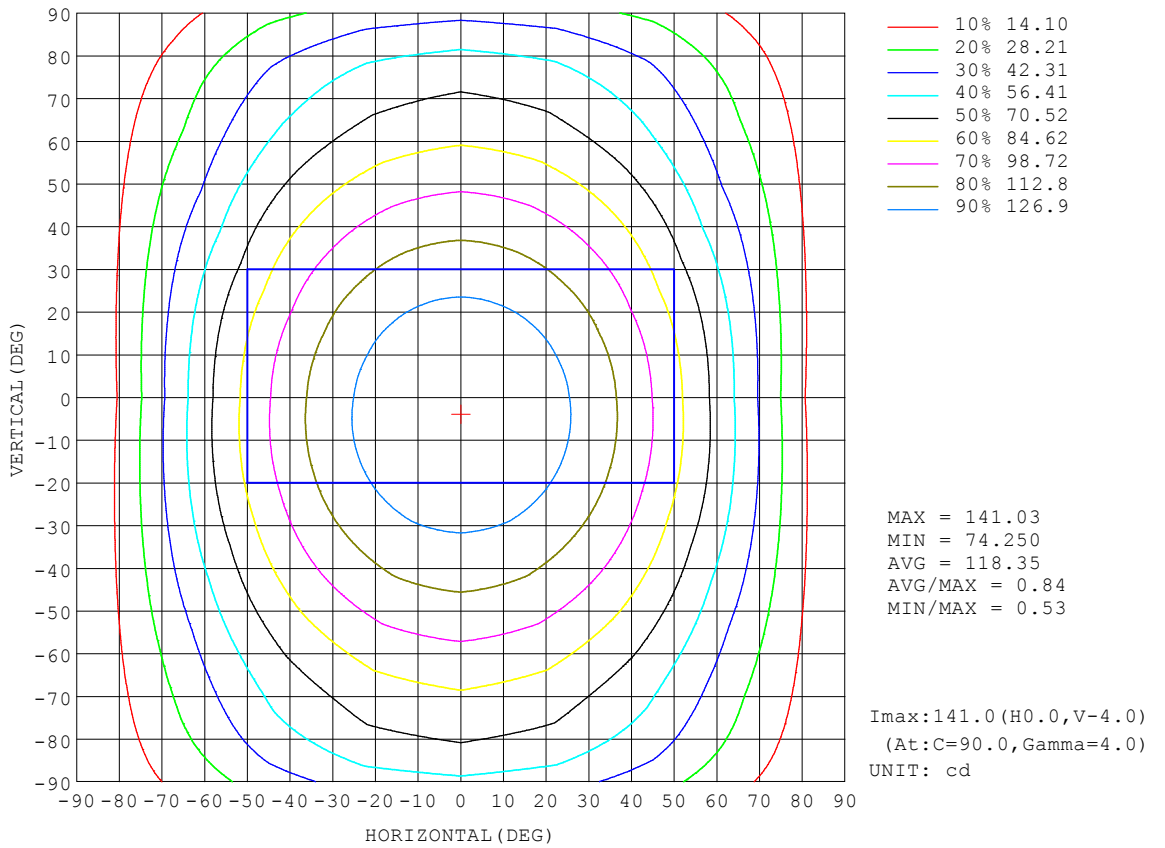
REFLECTANCE										
Ceiling	0.8	0.8	0.8	0.7	0.7	0.7	0.5	0.5	0.5	0
Walls	0.7	0.5	0.3	0.7	0.5	0.3	0.7	0.5	0.3	0
Working plane	0.2	0.2	0.2	0.2	0.2	0.2	0.2	0.2	0.2	0
ROOM INDEX	UTILIZATION FACTORS (PERCENT) $k(RI) \times RCR = 5$									
k = 0.60	52	40	32	51	39	32	50	39	32	25
0.80	61	49	41	60	48	40	58	47	40	32
1.00	69	57	49	68	56	48	65	58	48	40
1.25	76	64	56	75	63	55	71	62	55	46
1.50	81	70	61	79	69	61	76	67	60	51
2.00	89	78	70	86	77	69	82	74	68	58
2.50	93	83	76	90	82	75	86	79	73	63
3.00	97	88	81	94	86	80	89	83	77	67
4.00	101	94	88	98	92	86	93	88	83	72
5.00	104	98	92	101	95	90	96	91	87	76
ROOM INDEX	UF(total)									Direct
According to DIN EN 13032-2 2004			Suspended				SHRNOM = 1.25			

C Range: 0 - 360DEG
 C Interval: 22.5DEG
 Test Speed: HIGH
 Temperature:25.3DEG
 Operators:YSL
 Test Date:2021-06-30

Range: 0 - 180DEG
 Interval: 2.0DEG
 Test System:EVERFINE GO-2000B_V1 SYSTEM V2.00.450
 Humidity:65.0%
 Test Distance:5.749m [K=1.0000]
 Remarks:

ISOCANDELA DIAGRAM

Test:U:23.998V I:0.2059A P:4.9412W PF:1.0000 Freq:0Hz Lamp Flux:1.10005x480 lm		
NAME: 127-156	TYPE:	WEIGHT:
SPEC.:	DIM.:	SERIAL No.: 1
MFR.: Tronix Lighting	SUR.: 0.005*1	Shielding Angle:

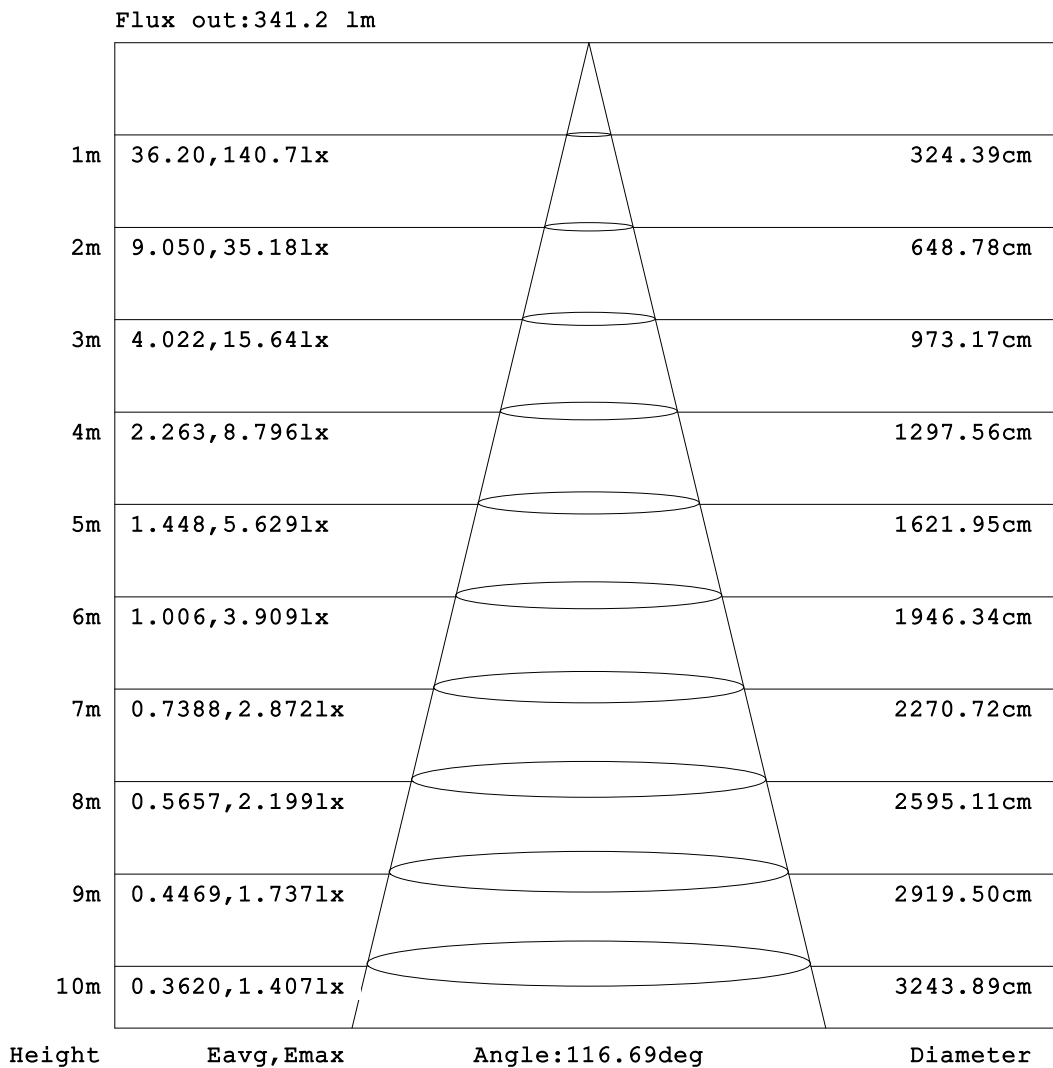


C Range: 0 - 360DEG
C Interval: 22.5DEG
Test Speed: HIGH
Temperature:25.3DEG
Operators:YSL
Test Date:2021-06-30

Range: 0 - 180DEG
 Interval: 2.0DEG
Test System:EVERFINE GO-2000B_V1 SYSTEM V2.00.450
Humidity:65.0%
Test Distance:5.749m [K=1.0000]
Remarks:

AAI Figure

Test:U:23.998V I:0.2059A P:4.9412W PF:1.0000 Freq:0Hz Lamp Flux:1.10005x480 lm		
NAME: 127-156	TYPE:	WEIGHT:
SPEC.:	DIM.:	SERIAL No.: 1
MFR.: Tronix Lighting	SUR.: 0.005*1	Shielding Angle:



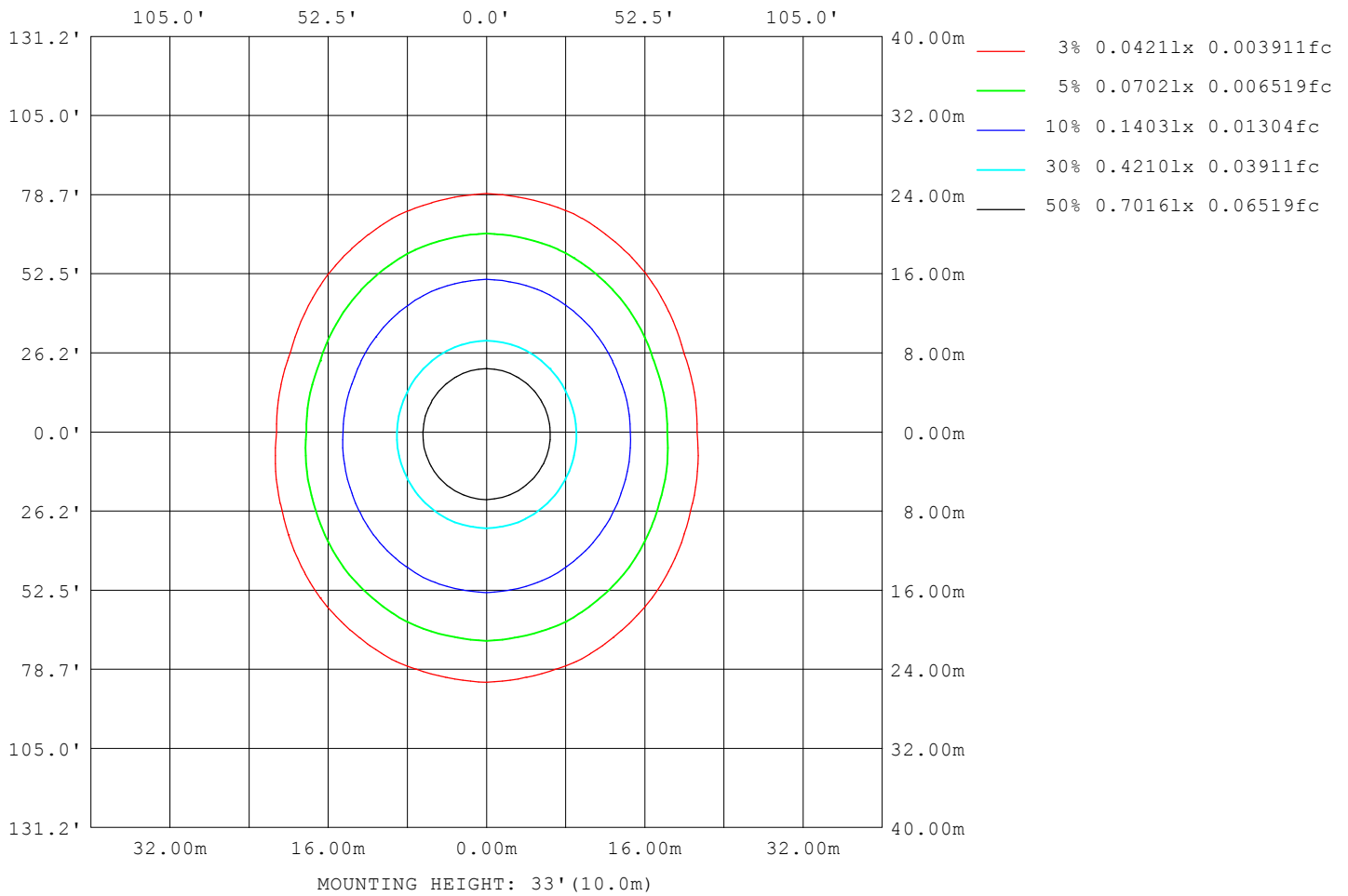
Note: The Curves indicate the illuminated area and the average illumination when the luminaire is at different distance.

C Range: 0 - 360DEG
C Interval: 22.5DEG
Test Speed: HIGH
Temperature:25.3DEG
Operators:YSL
Test Date:2021-06-30

Range: 0 - 180DEG
 Interval: 2.0DEG
Test System:EVERFINE GO-2000B_V1 SYSTEM V2.00.450
Humidity:65.0%
Test Distance:5.749m [K=1.0000]
Remarks:

ISOLUX DIAGRAM

Test:U:23.998V I:0.2059A P:4.9412W PF:1.0000 Freq:0Hz Lamp Flux:1.10005x480 lm		
NAME: 127-156	TYPE:	WEIGHT:
SPEC.:	DIM.:	SERIAL No.: 1
MFR.: Tronix Lighting	SUR.: 0.005*1	Shielding Angle:



C Range: 0 - 360DEG
 C Interval: 22.5DEG
 Test Speed: HIGH
 Temperature:25.3DEG
 Operators:YSL
 Test Date:2021-06-30

Range: 0 - 180DEG
 Interval: 2.0DEG
 Test System:EVERFINE GO-2000B_V1 SYSTEM V2.00.450
 Humidity:65.0%
 Test Distance:5.749m [K=1.0000]
 Remarks:

LED Avg.L Report

Test:U:23.998V I:0.2059A P:4.9412W PF:1.0000 Freq:0Hz Lamp Flux:1.10005x480 lm		
NAME: 127-156	TYPE:	WEIGHT:
SPEC.:	DIM.:	SERIAL No.: 1
MFR.: Tronix Lighting	SUR.: 0.005*1	Shielding Angle:

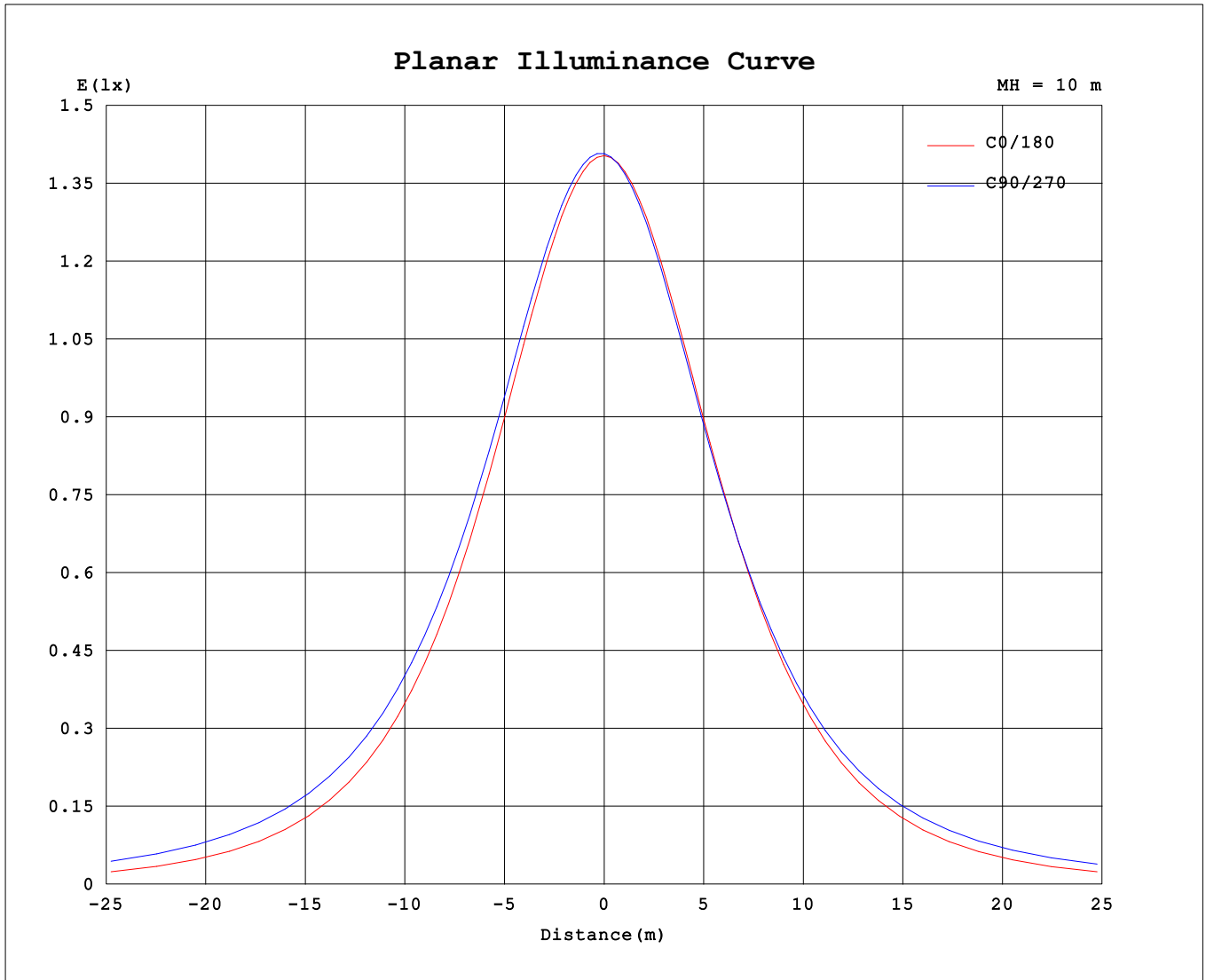
AvgL	cd/m2
L_0~180 (65) av	25485
L_0~180 (75) av	21504
L_0~180 (85) av	12355
L_90~270 (65) av	39299
L_90~270 (75) av	55593
L_90~270 (85) av	129746
L_45 (65) av	33379
L_45 (75) av	43214
L_45 (85) av	92946

Standard: GB/T 29293-2012

C Range: 0 - 360DEG
 C Interval: 22.5DEG
 Test Speed: HIGH
 Temperature:25.3DEG
 Operators:YSL
 Test Date:2021-06-30

Range: 0 - 180DEG
 Interval: 2.0DEG
 Test System:EVERFINE GO-2000B_V1 SYSTEM V2.00.450
 Humidity:65.0%
 Test Distance:5.749m [K=1.0000]
 Remarks:

Planar Illuminance Curve



C Range: 0 - 360DEG
 C Interval: 22.5DEG
 Test Speed: HIGH
 Temperature:25.3DEG
 Operators:YSL
 Test Date:2021-06-30

Range: 0 - 180DEG
 Interval: 2.0DEG
 Test System:EVERFINE GO-2000B_V1 SYSTEM V2.00.450
 Humidity:65.0%
 Test Distance:5.749m [K=1.0000]
 Remarks:

LUMINOUS DISTRIBUTION INTENSITY DATA

Test:U:23.998V I:0.2059A P:4.9412W PF:1.0000 Freq:0Hz Lamp Flux:1.10005x480 lm		
NAME: 127-156	TYPE:	WEIGHT:
SPEC.:	DIM.:	SERIAL No.: 1
MFR.: Tronix Lighting	SUR.: 0.005*1	Shielding Angle:

Table--1

UNIT: cd

C (DEG) □ (DEG)	0	22.5	45	67.5	90	112.5	135	157.5	180	202.5	225	247.5	270	292.5	315	337.5			
0	141	141	141	141	141	141	141	141	141	141	141	141	141	141	141	141			
5	140	140	141	141	141	141	141	140	140	140	140	140	140	140	140	140			
10	139	139	140	140	140	140	140	139	138	138	137	137	137	137	137	138			
15	137	137	138	139	139	139	138	137	136	136	135	135	135	135	135	136			
20	132	134	135	136	136	136	135	133	132	131	130	130	130	130	130	131			
25	129	130	132	133	133	133	132	130	128	127	127	126	126	126	127	127			
30	122	124	126	128	128	128	126	124	121	120	120	120	120	120	120	120			
35	117	119	122	124	125	124	122	119	116	114	114	115	116	115	115	115			
40	107	110	114	118	119	118	114	110	107	105	106	108	109	108	106	106			
45	100	104	108	113	115	113	108	104	99.9	98.3	100.0	103	104	103	100	98.8			
50	88.8	93.1	99.5	105	108	106	99.6	92.9	88.3	86.9	90.4	94.4	96.2	94.7	91.0	87.5			
55	80.3	85.4	93.2	100	103	100	93.4	85.2	79.8	78.8	83.7	88.7	91.0	89.1	84.4	79.5			
60	66.5	72.9	83.4	92.0	95.1	92.2	83.7	72.9	66.0	66.1	73.5	80.3	83.3	80.8	74.4	67.0			
65	56.7	64.4	76.8	86.6	90.1	86.8	77.2	64.6	56.1	57.5	66.9	75.0	78.4	75.6	67.8	58.4			
70	41.2	51.4	67.1	78.8	82.9	79.1	67.7	51.8	40.6	44.6	57.6	68.0	72.1	68.7	58.7	45.8			
75	30.7	43.0	61.1	74.1	78.6	74.5	61.8	43.6	30.1	36.6	52.3	63.5	67.5	64.1	53.6	37.9			
80	15.7	31.8	53.4	67.0	71.6	67.4	54.2	32.8	15.2	26.4	44.1	55.0	59.0	55.5	45.3	28.0			
85	7.25	25.8	47.1	60.8	65.6	61.4	48.1	27.0	6.94	20.5	36.9	47.3	51.3	47.7	37.8	22.1			
90	0.26	14.9	34.6	48.5	53.4	49.2	35.7	15.9	0.24	9.52	24.3	34.3	38.0	34.4	24.9	10.6			
95	0.29	6.04	24.2	38.2	43.2	39.0	25.5	6.71	0.26	0.54	3.38	12.3	16.1	11.6	3.63	0.69			
100	0.44	0.65	5.50	17.9	22.5	18.9	6.53	0.60	0.38	0.50	0.73	1.12	1.29	1.14	0.76	0.51			
105	0.54	0.66	1.08	5.00	8.90	5.94	0.99	0.62	0.47	0.58	0.78	0.93	0.99	0.94	0.80	0.58			
110	0.71	0.76	0.93	1.16	1.32	1.14	0.90	0.76	0.62	0.70	0.84	0.99	1.05	1.01	0.88	0.71			
115	0.82	0.84	0.98	1.06	1.15	1.07	0.97	0.84	0.73	0.78	0.91	1.02	1.08	1.05	0.94	0.79			
120	0.98	0.99	1.08	1.13	1.16	1.13	1.05	0.97	0.88	0.90	1.00	1.10	1.14	1.13	1.04	0.92			
125	1.08	1.08	1.14	1.19	1.20	1.18	1.11	1.06	0.97	0.98	1.05	1.14	1.18	1.17	1.10	1.01			
130	1.21	1.22	1.25	1.28	1.28	1.26	1.21	1.18	1.11	1.10	1.14	1.21	1.24	1.25	1.20	1.14			
135	1.30	1.30	1.32	1.33	1.33	1.31	1.27	1.26	1.19	1.17	1.21	1.26	1.28	1.30	1.27	1.22			
140	1.40	1.42	1.42	1.41	1.41	1.39	1.37	1.36	1.30	1.28	1.29	1.33	1.34	1.37	1.36	1.34			
145	1.47	1.49	1.49	1.47	1.46	1.45	1.42	1.42	1.37	1.34	1.35	1.38	1.38	1.42	1.42	1.41			
150	1.57	1.59	1.59	1.56	1.54	1.53	1.51	1.52	1.48	1.44	1.43	1.46	1.44	1.49	1.51	1.51			
155	1.63	1.66	1.65	1.61	1.60	1.58	1.56	1.59	1.55	1.51	1.49	1.51	1.50	1.54	1.57	1.58			
160	1.72	1.75	1.73	1.69	1.70	1.66	1.66	1.69	1.66	1.62	1.59	1.60	1.60	1.62	1.66	1.69			
165	1.79	1.82	1.79	1.75	1.77	1.71	1.73	1.77	1.73	1.70	1.67	1.66	1.68	1.68	1.73	1.76			
170	1.89	1.90	1.88	1.84	1.83	1.81	1.84	1.88	1.85	1.82	1.79	1.78	1.78	1.78	1.83	1.87			
175	1.95	1.94	1.95	1.91	1.89	1.88	1.90	1.94	1.92	1.90	1.87	1.85	1.85	1.85	1.90	1.95			
180	2.02	1.99	1.98	1.96	1.96	1.95	1.99	2.03	2.01	2.00	1.98	1.96	1.96	1.95	1.99	2.03			

C Range: 0 - 360DEG
 C Interval: 22.5DEG
 Test Speed: HIGH
 Temperature:25.3DEG
 Operators:YSL
 Test Date:2021-06-30

□ Range: 0 - 180DEG
 □ Interval: 2.0DEG
 Test System:EVERFINE GO-2000B_V1 SYSTEM V2.00.450
 Humidity:65.0%
 Test Distance:5.749m [K=1.0000]
 Remarks: