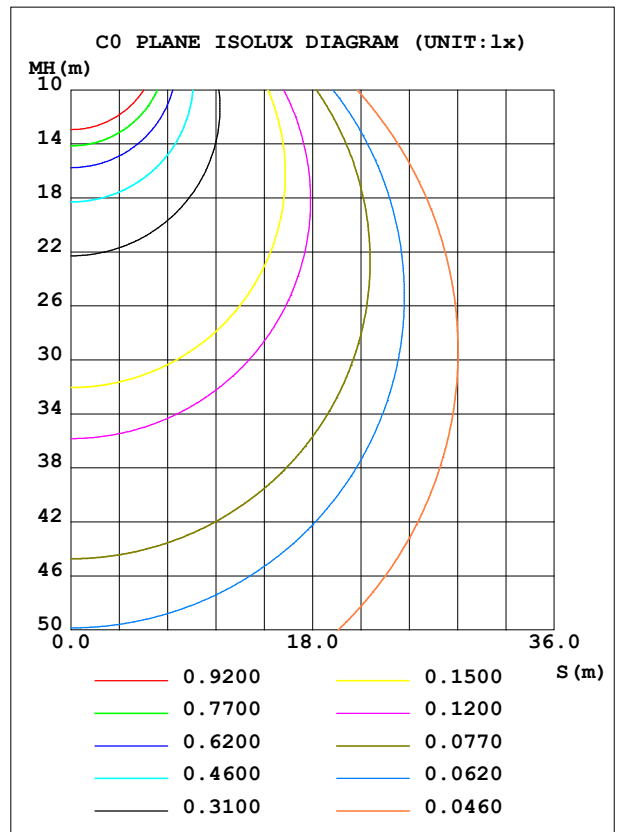
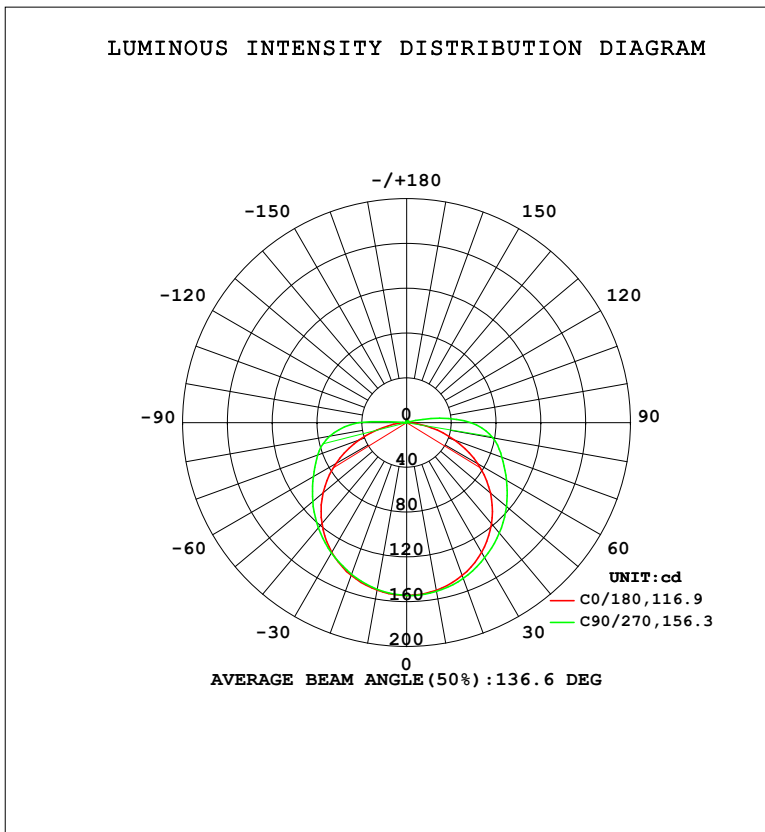


LUMINAIRE PHOTOMETRIC TEST REPORT

Test:U:23.998V I:0.2279A P:5.4691W PF:1.0000 Freq:0Hz Lamp Flux:1.22062x480 lm		
NAME: 127-155	TYPE:	WEIGHT:
SPEC.:	DIM.:	SERIAL No.: 1
MFR.: Tronix Lighting	SUR.: 0.005*1	Shielding Angle:

DATA OF LAMP		PHOTOMETRIC DATA			
MODEL		Imax (cd)	154.5	S/MH (C0/180)	1.29
NOMINAL POWER (W)	5	LOR (%)	100.0	S/MH (C90/270)	1.30
RATED VOLTAGE (V)	24	TOTAL FLUX (lm)	585.90	<input type="checkbox"/> UP, DN (C0-180)	2.8,49.3
NOMINAL FLUX (lm)	1.22062	CIE CLASS	DIRECT	<input type="checkbox"/> UP, DN (C180-360)	1.2,46.7
LAMPS INSIDE	480	<input type="checkbox"/> up (%)	4.0	CIBSE SHR NOM	1.50
TEST VOLTAGE (V)	24	<input type="checkbox"/> down (%)	96.0	CIBSE SHR MAX	1.55



C Range: 0 - 360DEG  
 C Interval: 22.5DEG  
 Test Speed: HIGH  
 Temperature: 25.3DEG  
 Operators: YSL  
 Test Date: 2021-06-30

Range: 0 - 180DEG  
 Interval: 2.0DEG  
 Test System: EVERFINE GO-2000B\_V1 SYSTEM V2.00.450  
 Humidity: 65.0%  
 Test Distance: 5.749m [K=1.0000]  
 Remarks:

**ZONAL FLUX DIAGRAM**

ZONAL FLUX DIAGRAM:

°	C0	C45	C90	C135	C180	C225	C270	C315	°	□ zone	□ total	%lum,lamp
10	152.1	152.8	153.2	152.9	152.0	151.5	151.2	151.4	0- 10	14.63	14.63	2.5,2.5
20	145.3	147.0	148.0	147.1	145.2	144.5	144.2	144.3	10- 20	42.20	56.83	9.7,9.7
30	133.9	137.1	139.4	137.3	133.7	133.3	134.3	133.1	20- 30	65.02	121.8	20.8,20.8
40	118.0	123.7	128.9	123.8	117.8	119.0	122.7	119.1	30- 40	80.68	202.5	34.6,34.6
50	97.74	108.0	116.5	108.2	97.40	102.5	109.6	102.9	40- 50	87.86	290.4	49.6,49.6
60	73.36	90.54	103.1	90.85	72.84	84.72	96.17	85.34	50- 60	86.20	376.6	64.3,64.3
70	45.55	73.19	90.52	73.73	44.91	68.01	84.58	69.05	60- 70	77.10	453.7	77.4,77.4
80	17.42	59.11	78.12	59.82	16.77	53.39	69.75	54.20	70- 80	63.65	517.3	88.3,88.3
90	0.2685	37.86	57.38	38.63	0.2550	28.62	43.25	28.46	80- 90	45.07	562.4	96,96
100	0.4858	5.197	22.29	5.928	0.4244	0.7854	1.016	0.7940	90-100	15.63	578.0	98.7,98.7
110	0.7884	1.014	1.183	1.022	0.6937	0.9259	1.119	0.9557	100-110	2.076	580.1	99,99
120	1.084	1.202	1.303	1.191	0.9701	1.090	1.242	1.134	110-120	1.043	581.1	99.2,99.2
130	1.344	1.394	1.444	1.364	1.220	1.247	1.354	1.310	120-130	1.112	582.3	99.4,99.4
140	1.546	1.582	1.576	1.533	1.437	1.411	1.458	1.481	130-140	1.097	583.4	99.6,99.6
150	1.727	1.758	1.717	1.678	1.630	1.568	1.572	1.652	140-150	0.9929	584.3	99.7,99.7
160	1.899	1.908	1.888	1.837	1.828	1.745	1.750	1.821	150-160	0.8065	585.2	99.9,99.9
170	2.078	2.068	2.025	2.018	2.033	1.964	1.947	2.006	160-170	0.5427	585.7	100,100
180	2.221	2.175	2.161	2.191	2.218	2.175	2.158	2.194	170-180	0.1986	585.9	100,100
DEG	LUMINOUS INTENSITY:cd									UNIT:lm		

Conical surface Flux(90deg): 254.95 lm

%lum = 43.5%

%lamp = 43.5%

Conical surface Flux(120deg): 376.58 lm

%lum = 64.3%

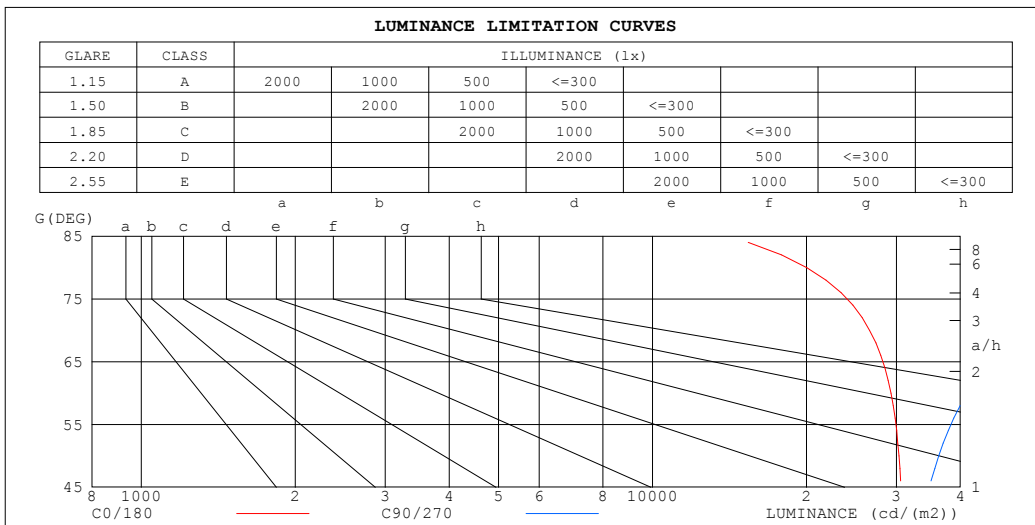
%lamp = 64.3%

C Range: 0 - 360DEG  
 C Interval: 22.5DEG  
 Test Speed: HIGH  
 Temperature:25.3DEG  
 Operators:YSL  
 Test Date:2021-06-30

□ Range: 0 - 180DEG  
 □ Interval: 2.0DEG  
 Test System:EVERFINE GO-2000B\_V1 SYSTEM V2.00.450  
 Humidity:65.0%  
 Test Distance:5.749m [K=1.0000]  
 Remarks:

**LUMINANCE LIMITATION CURVES**

Test:U:23.998V I:0.2279A P:5.4691W PF:1.0000 Freq:0Hz Lamp Flux:1.22062x480 lm		
NAME: 127-155	TYPE:	WEIGHT:
SPEC.:	DIM.:	SERIAL No.: 1
MFR.: Tronix Lighting	SUR.: 0.005*1	Shielding Angle:



LUMINANCE cd/(m2)		
G (DEG)	C0/180	C90/270
85	18453	163850
80	20027	90106
75	26246	66686
70	26583	53013
65	29548	46327
60	29283	41286
55	30788	38813
50	30349	36299
45	31168	35161

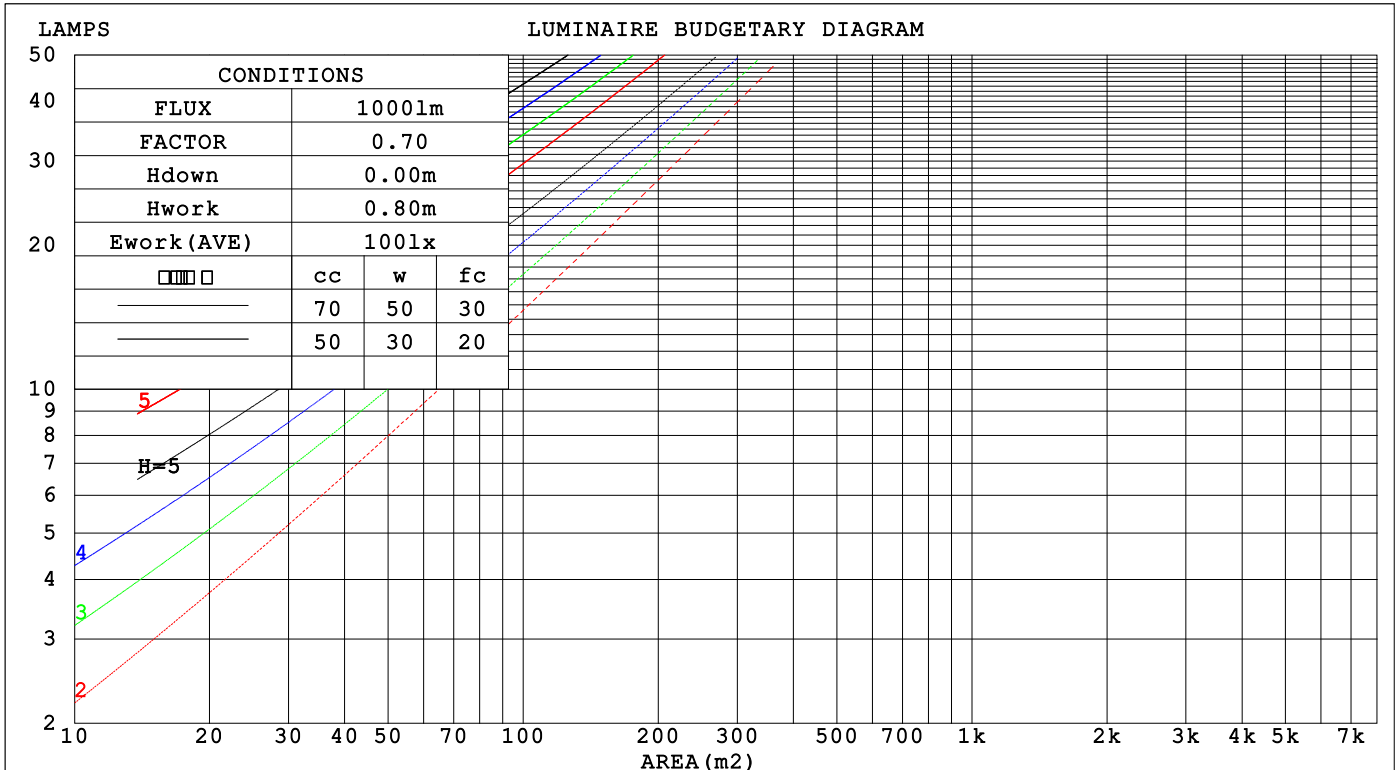
C Range: 0 - 360DEG  
 C Interval: 22.5DEG  
 Test Speed: HIGH  
 Temperature:25.3DEG  
 Operators:YSL  
 Test Date:2021-06-30

Range: 0 - 180DEG  
 Interval: 2.0DEG  
 Test System:EVERFINE GO-2000B\_V1 SYSTEM V2.00.450  
 Humidity:65.0%  
 Test Distance:5.749m [K=1.0000]  
 Remarks:

**CU AND LUMINAIRE BUDGETARY ESTIMATE DIAGRAM**

Test:U:23.998V I:0.2279A P:5.4691W PF:1.0000 Freq:0Hz		
Lamp Flux:1.22062x480 lm		
NAME: 127-155	TYPE:	WEIGHT:
SPEC.:	DIM.:	SERIAL No.: 1
MFR.: Tronix Lighting	SUR.: 0.005*1	Shielding Angle:

□cc	80%			70%			50%			30%			10%			0
□w	50%	30%	10%	50%	30%	10%	50%	30%	10%	50%	30%	10%	50%	30%	10%	0
□fc	20%			20%			20%			20%			20%			0
RCR	RCR:Room Cavity Ratio						Coefficients of Utilization(CU)									
0.0	1.18	1.18	1.18	1.15	1.15	1.15	1.09	1.09	1.09	1.03	1.03	1.03	.98	.98	.98	.96
1.0	.99	.93	.88	.96	.91	.86	.91	.87	.83	.86	.83	.79	.82	.79	.76	.74
2.0	.84	.76	.69	.82	.74	.68	.78	.71	.66	.73	.68	.64	.70	.65	.62	.59
3.0	.73	.64	.56	.71	.62	.55	.67	.60	.54	.64	.58	.52	.61	.56	.51	.48
4.0	.64	.54	.47	.62	.53	.46	.59	.51	.45	.56	.50	.44	.54	.48	.43	.41
5.0	.57	.47	.40	.56	.46	.39	.53	.45	.39	.50	.43	.38	.48	.42	.37	.35
6.0	.51	.41	.35	.50	.41	.34	.48	.40	.34	.45	.38	.33	.43	.37	.32	.30
7.0	.46	.37	.30	.45	.36	.30	.43	.35	.29	.41	.34	.29	.40	.33	.28	.26
8.0	.42	.33	.27	.41	.33	.27	.39	.32	.26	.38	.31	.26	.36	.30	.25	.23
9.0	.38	.30	.24	.38	.29	.24	.36	.29	.23	.35	.28	.23	.33	.27	.23	.21
10.0	.35	.27	.22	.35	.27	.21	.33	.26	.21	.32	.26	.21	.31	.25	.21	.19



C Range: 0 - 360DEG  
 C Interval: 22.5DEG  
 Test Speed: HIGH  
 Temperature:25.3DEG  
 Operators:YSL  
 Test Date:2021-06-30

□ Range: 0 - 180DEG  
 □ Interval: 2.0DEG  
 Test System:EVERFINE GO-2000B\_V1 SYSTEM V2.00.450  
 Humidity:65.0%  
 Test Distance:5.749m [K=1.0000]  
 Remarks:

**WEC AND CCEC**

Test:U:23.998V I:0.2279A P:5.4691W PF:1.0000 Freq:0Hz		
Lamp Flux:1.22062x480 lm		
NAME: 127-155	TYPE:	WEIGHT:
SPEC.:	DIM.:	SERIAL No.: 1
MFR.: Tronix Lighting	SUR.: 0.005*1	Shielding Angle:

<input type="checkbox"/> cc	80%			70%			50%			30%			10%			0
<input type="checkbox"/> w	50%	30%	10%	50%	30%	10%	50%	30%	10%	50%	30%	10%	50%	30%	10%	0
<input type="checkbox"/> fc	20%			20%			20%			20%			20%			0
RCR	RCR:Room Cavity Ratio						Wall Exitance Coefficients (WEC)									
0.0																
1.0	.394	.224	.071	.386	.220	.070	.370	.212	.068	.355	.205	.066	.342	.198	.064	
2.0	.343	.188	.058	.335	.185	.057	.321	.178	.055	.308	.173	.054	.296	.167	.053	
3.0	.305	.162	.049	.298	.160	.048	.285	.155	.047	.273	.150	.046	.262	.145	.045	
4.0	.274	.142	.042	.268	.140	.041	.257	.136	.041	.246	.132	.040	.236	.128	.039	
5.0	.249	.127	.037	.244	.125	.036	.233	.122	.036	.224	.118	.035	.215	.115	.035	
6.0	.228	.114	.033	.223	.113	.032	.214	.110	.032	.206	.107	.031	.198	.104	.031	
7.0	.210	.104	.029	.206	.103	.029	.198	.100	.029	.190	.097	.028	.183	.095	.028	
8.0	.195	.095	.027	.191	.094	.027	.184	.092	.026	.177	.089	.026	.170	.087	.025	
9.0	.181	.088	.025	.178	.087	.024	.171	.085	.024	.165	.083	.024	.159	.081	.023	
10.0	.170	.081	.023	.167	.080	.022	.161	.079	.022	.155	.077	.022	.149	.075	.022	

<input type="checkbox"/> cc	80%			70%			50%			30%			10%			0
<input type="checkbox"/> w	50%	30%	10%	50%	30%	10%	50%	30%	10%	50%	30%	10%	50%	30%	10%	0
<input type="checkbox"/> fc	20%			20%			20%			20%			20%			0
RCR	RCR:Room Cavity Ratio						Ceiling Cavity Exitance Coefficients (CCEC)									
0.0	.221	.221	.221	.189	.189	.189	.129	.129	.129	.074	.074	.074	.024	.024	.024	
1.0	.217	.186	.158	.186	.160	.136	.127	.110	.094	.073	.064	.055	.023	.020	.018	
2.0	.210	.163	.123	.180	.140	.106	.123	.097	.074	.071	.056	.043	.023	.018	.014	
3.0	.202	.146	.101	.173	.126	.087	.119	.087	.061	.069	.051	.036	.022	.017	.012	
4.0	.194	.133	.086	.167	.115	.075	.115	.080	.053	.066	.047	.031	.021	.015	.010	
5.0	.186	.123	.076	.160	.106	.066	.110	.074	.047	.064	.044	.028	.021	.014	.009	
6.0	.179	.115	.069	.154	.099	.060	.106	.069	.042	.061	.041	.025	.020	.013	.008	
7.0	.171	.108	.063	.147	.093	.055	.102	.065	.039	.059	.039	.023	.019	.013	.008	
8.0	.164	.102	.059	.142	.088	.052	.098	.062	.037	.057	.037	.022	.018	.012	.007	
9.0	.158	.097	.056	.136	.084	.049	.094	.059	.035	.055	.035	.021	.018	.011	.007	
10.0	.152	.093	.054	.131	.081	.047	.091	.057	.033	.053	.034	.020	.017	.011	.007	

C Range: 0 - 360DEG  
 C Interval: 22.5DEG  
 Test Speed: HIGH  
 Temperature:25.3DEG  
 Operators:YSL  
 Test Date:2021-06-30

Range: 0 - 180DEG  
 Interval: 2.0DEG  
 Test System:EVERFINE GO-2000B\_V1 SYSTEM V2.00.450  
 Humidity:65.0%  
 Test Distance:5.749m [K=1.0000]  
 Remarks:

**UGR(Unified Glare Rating) Table**

Test:U:23.998V I:0.2279A P:5.4691W PF:1.0000 Freq:0Hz										
Lamp Flux:1.22062x480 lm										
NAME: 127-155				TYPE:				WEIGHT:		
SPEC.:				DIM.:				SERIAL No.: 1		
MFR.: Tronix Lighting				SUR.: 0.005*1				Shielding Angle:		
ceiling/cavity	0.7	0.7	0.5	0.5	0.3	0.7	0.7	0.5	0.5	0.3
walls	0.5	0.3	0.5	0.3	0.3	0.5	0.3	0.5	0.3	0.3
working plane	0.2	0.2	0.2	0.2	0.2	0.2	0.2	0.2	0.2	0.2
Room dimensions	Viewed crosswise					Viewed endwise				
x = 2H y = 2H	26.1	27.7	26.4	28.0	28.3	27.5	29.1	27.8	29.3	29.6
3H	27.7	29.2	28.1	29.5	29.8	30.1	31.6	30.5	31.9	32.3
4H	28.4	29.8	28.7	30.1	30.5	31.6	33.1	32.0	33.4	33.7
6H	28.8	30.1	29.2	30.5	30.9	33.3	34.6	33.7	35.0	35.4
8H	28.9	30.2	29.3	30.6	31.0	34.2	35.5	34.6	35.9	36.3
12H	29.0	30.3	29.4	30.6	31.0	35.2	36.5	35.6	36.8	37.2
4H 2H	27.1	28.5	27.5	28.9	29.2	28.1	29.5	28.5	29.9	30.2
3H	29.0	30.2	29.4	30.6	31.0	31.0	32.3	31.5	32.7	33.1
4H	29.8	31.0	30.3	31.4	31.8	32.8	33.9	33.2	34.3	34.7
6H	30.5	31.5	31.0	32.0	32.4	34.6	35.7	35.1	36.1	36.6
8H	30.7	31.7	31.2	32.2	32.6	35.7	36.6	36.1	37.1	37.6
12H	30.9	31.8	31.4	32.3	32.8	36.8	37.7	37.3	38.2	38.7
8H 4H	30.8	31.8	31.3	32.3	32.7	33.2	34.1	33.6	34.6	35.1
6H	31.9	32.7	32.4	33.2	33.7	35.4	36.2	35.9	36.7	37.2
8H	32.3	33.1	32.9	33.6	34.1	36.6	37.4	37.1	37.9	38.4
12H	32.7	33.4	33.3	33.9	34.5	38.0	38.7	38.6	39.2	39.8
12H 4H	31.2	32.1	31.7	32.5	33.0	33.2	34.1	33.7	34.6	35.1
6H	32.4	33.2	33.0	33.7	34.2	35.5	36.3	36.0	36.8	37.3
8H	33.1	33.7	33.6	34.3	34.8	36.9	37.5	37.4	38.0	38.6
Variations with the observer position at spacings(CIE Pub.117):										
S = 1.0H	+ 0.1 / - 0.1					+ 0.1 / - 0.1				
1.5H	+ 0.2 / - 0.3					+ 0.2 / - 0.3				
2.0H	+ 0.2 / - 0.4					+ 0.2 / - 0.4				

CIE Pub.117, 585.9 lm Total Lamp Luminous Flux Correct (8log(F/F0) = -1.9)  
 Area: 0.005 m2

C Range: 0 - 360DEG  
 C Interval: 22.5DEG  
 Test Speed: HIGH  
 Temperature:25.3DEG  
 Operators:YSL  
 Test Date:2021-06-30

Range: 0 - 180DEG  
 Interval: 2.0DEG  
 Test System:EVERFINE GO-2000B\_V1 SYSTEM V2.00.450  
 Humidity:65.0%  
 Test Distance:5.749m [K=1.0000]  
 Remarks:

**UTILIZATION FACTORS TABLE**

Test:U:23.998V I:0.2279A P:5.4691W PF:1.0000 Freq:0Hz Lamp Flux:1.22062x480 lm		
NAME: 127-155	TYPE:	WEIGHT:
SPEC.:	DIM.:	SERIAL No.: 1
MFR.: Tronix Lighting	SUR.: 0.005*1	Shielding Angle:

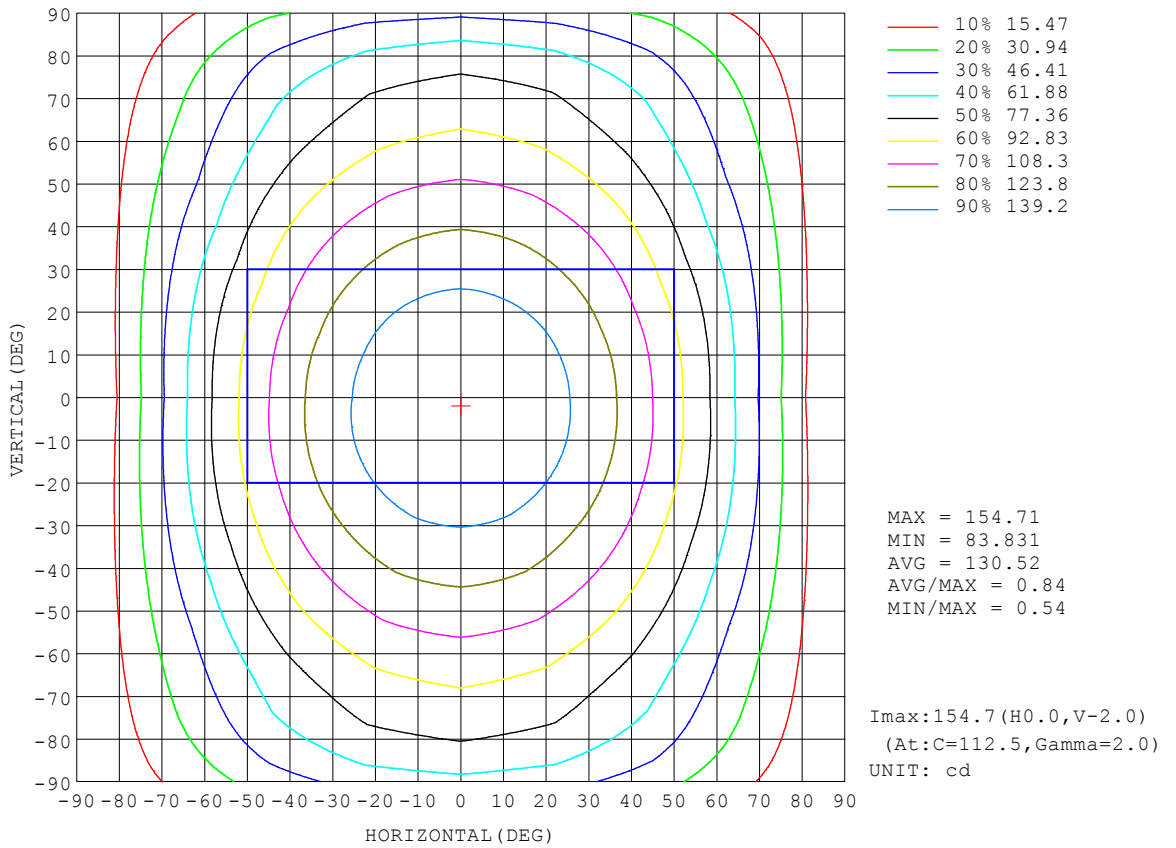
REFLECTANCE										
Ceiling	0.8	0.8	0.8	0.7	0.7	0.7	0.5	0.5	0.5	0
Walls	0.7	0.5	0.3	0.7	0.5	0.3	0.7	0.5	0.3	0
Working plane	0.2	0.2	0.2	0.2	0.2	0.2	0.2	0.2	0.2	0
ROOM INDEX	UTILIZATION FACTORS (PERCENT) $k(RI) \times RCR = 5$									
k = 0.60	52	40	32	51	39	32	50	39	32	25
0.80	61	48	40	60	48	40	58	47	40	32
1.00	69	57	48	68	56	48	65	57	47	39
1.25	76	64	56	74	63	55	71	61	54	46
1.50	81	70	61	79	68	61	76	66	59	51
2.00	88	78	70	86	77	69	82	74	67	58
2.50	93	83	76	90	81	75	86	78	72	63
3.00	96	88	81	94	86	79	89	82	77	67
4.00	101	94	87	98	91	86	93	88	83	72
5.00	104	97	92	101	95	90	96	91	87	76
ROOM INDEX	UF(total)									Direct
According to DIN EN 13032-2 2004			Suspended				SHRNOM = 1.25			

C Range: 0 - 360DEG  
 C Interval: 22.5DEG  
 Test Speed: HIGH  
 Temperature:25.3DEG  
 Operators:YSL  
 Test Date:2021-06-30

Range: 0 - 180DEG  
 Interval: 2.0DEG  
 Test System:EVERFINE GO-2000B\_V1 SYSTEM V2.00.450  
 Humidity:65.0%  
 Test Distance:5.749m [K=1.0000]  
 Remarks:

**ISOCANDELA DIAGRAM**

Test:U:23.998V I:0.2279A P:5.4691W PF:1.0000 Freq:0Hz Lamp Flux:1.22062x480 lm		
NAME: 127-155	TYPE:	WEIGHT:
SPEC.:	DIM.:	SERIAL No.: 1
MFR.: Tronix Lighting	SUR.: 0.005*1	Shielding Angle:



C Range: 0 - 360DEG  
 C Interval: 22.5DEG  
 Test Speed: HIGH  
 Temperature:25.3DEG  
 Operators:YSL  
 Test Date:2021-06-30

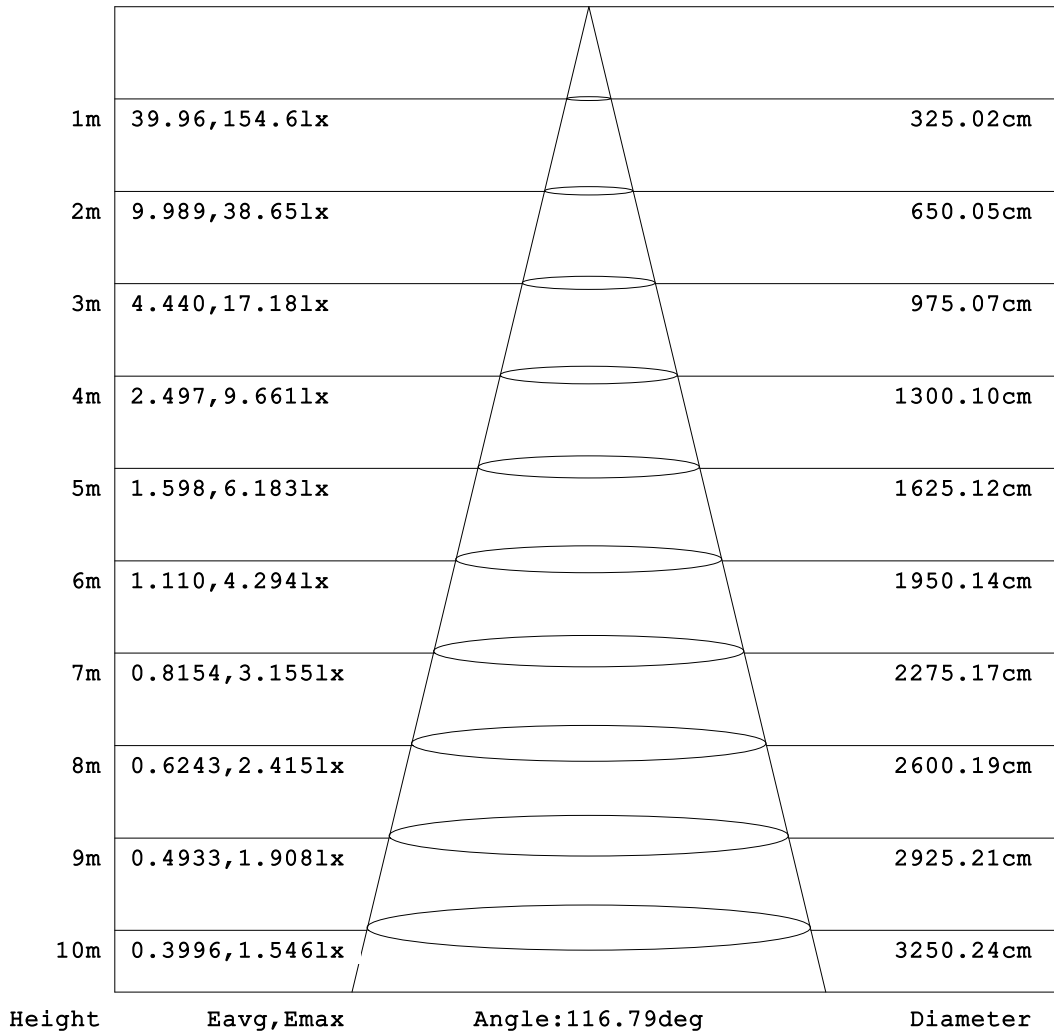
Range: 0 - 180DEG  
 Interval: 2.0DEG  
 Test System:EVERFINE GO-2000B\_V1 SYSTEM V2.00.450  
 Humidity:65.0%  
 Test Distance:5.749m [K=1.0000]  
 Remarks:



**AAI Figure**

Test:U:23.998V I:0.2279A P:5.4691W PF:1.0000 Freq:0Hz Lamp Flux:1.22062x480 lm		
NAME: 127-155	TYPE:	WEIGHT:
SPEC.:	DIM.:	SERIAL No.: 1
MFR.: Tronix Lighting	SUR.: 0.005*1	Shielding Angle:

Flux out:376.6 lm



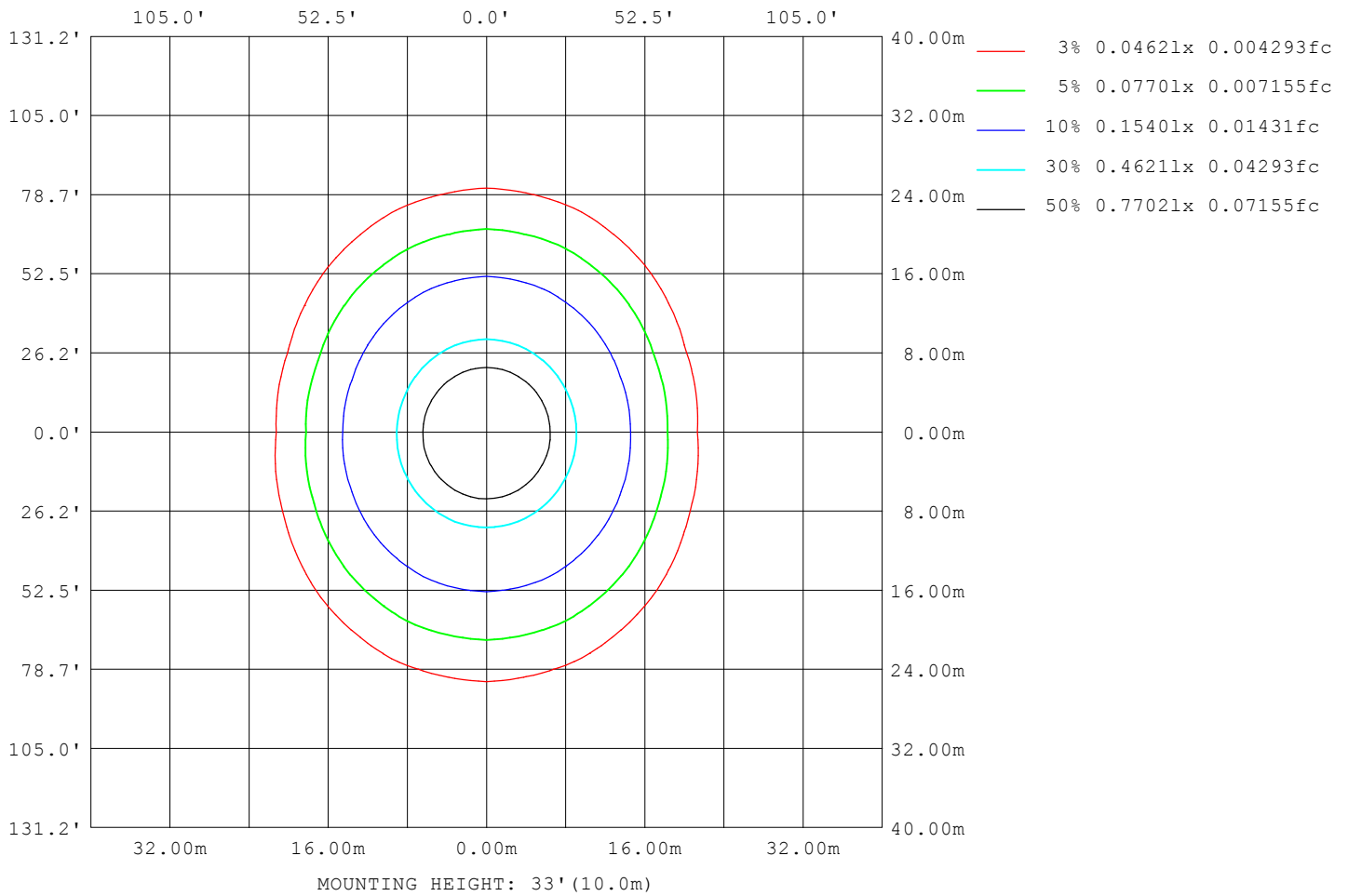
Note: The Curves indicate the illuminated area and the average illumination when the luminaire is at different distance.

C Range: 0 - 360DEG  
 C Interval: 22.5DEG  
 Test Speed: HIGH  
 Temperature: 25.3DEG  
 Operators: YSL  
 Test Date: 2021-06-30

Range: 0 - 180DEG  
 Interval: 2.0DEG  
 Test System: EVERFINE GO-2000B\_V1 SYSTEM V2.00.450  
 Humidity: 65.0%  
 Test Distance: 5.749m [K=1.0000]  
 Remarks:

**ISOLUX DIAGRAM**

Test:U:23.998V I:0.2279A P:5.4691W PF:1.0000 Freq:0Hz Lamp Flux:1.22062x480 lm		
NAME: 127-155	TYPE:	WEIGHT:
SPEC.:	DIM.:	SERIAL No.: 1
MFR.: Tronix Lighting	SUR.: 0.005*1	Shielding Angle:



C Range: 0 - 360DEG  
 C Interval: 22.5DEG  
 Test Speed: HIGH  
 Temperature:25.3DEG  
 Operators:YSL  
 Test Date:2021-06-30

Range: 0 - 180DEG  
 Interval: 2.0DEG  
 Test System:EVERFINE GO-2000B\_V1 SYSTEM V2.00.450  
 Humidity:65.0%  
 Test Distance:5.749m [K=1.0000]  
 Remarks:

**LED Avg.L Report**

Test:U:23.998V I:0.2279A P:5.4691W PF:1.0000 Freq:0Hz Lamp Flux:1.22062x480 lm		
NAME: 127-155	TYPE:	WEIGHT:
SPEC.:	DIM.:	SERIAL No.: 1
MFR.: Tronix Lighting	SUR.: 0.005*1	Shielding Angle:

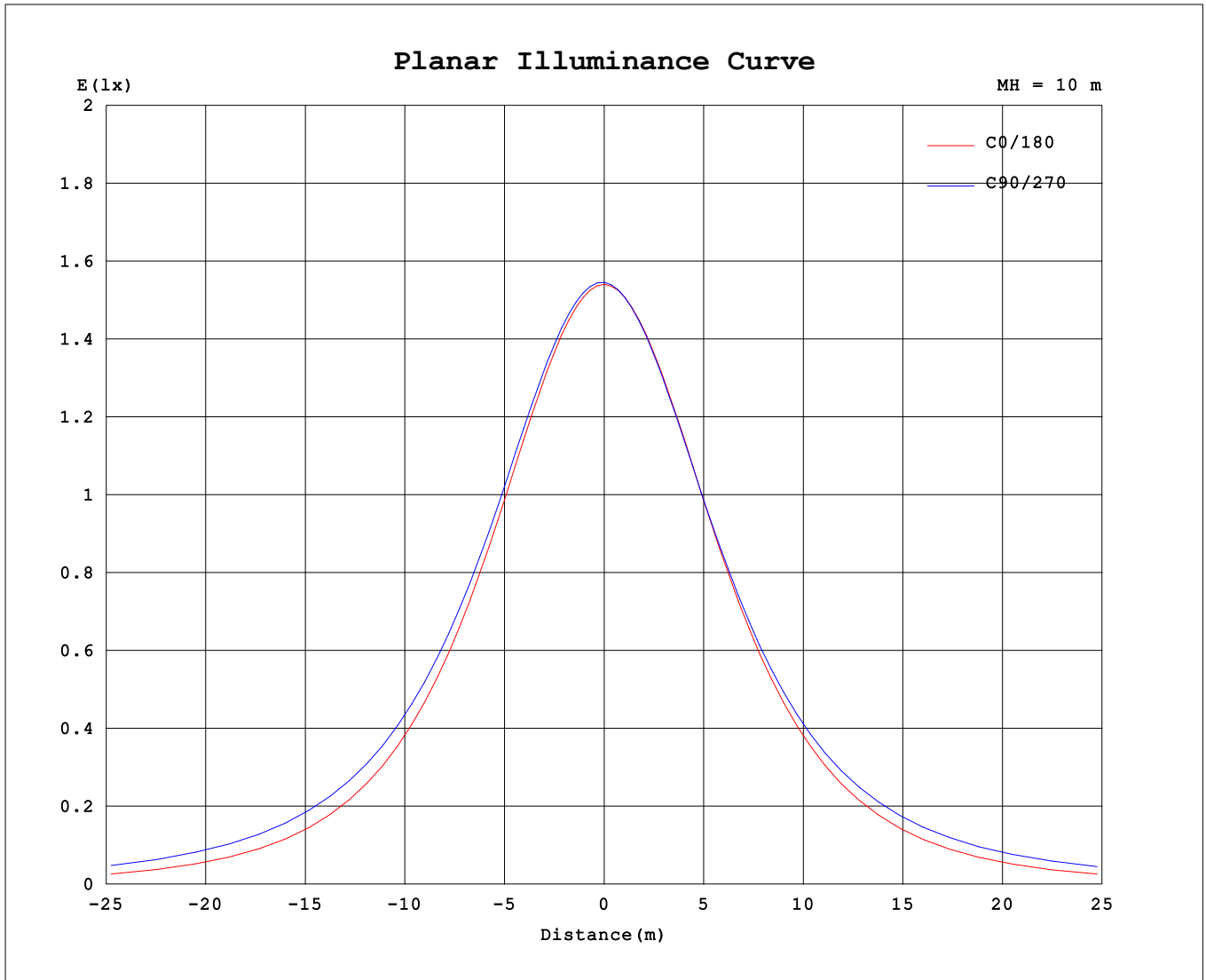
AvgL	cd/m2
L_0~180 (65) av	28155
L_0~180 (75) av	23815
L_0~180 (85) av	13480
L_90~270 (65) av	44143
L_90~270 (75) av	63074
L_90~270 (85) av	146365
L_45 (65) av	37437
L_45 (75) av	49437
L_45 (85) av	106599

Standard: GB/T 29293-2012

C Range: 0 - 360DEG  
 C Interval: 22.5DEG  
 Test Speed: HIGH  
 Temperature:25.3DEG  
 Operators:YSL  
 Test Date:2021-06-30

Range: 0 - 180DEG  
 Interval: 2.0DEG  
 Test System:EVERFINE GO-2000B\_V1 SYSTEM V2.00.450  
 Humidity:65.0%  
 Test Distance:5.749m [K=1.0000]  
 Remarks:

**Planar Illuminance Curve**



C Range: 0 - 360DEG  
 C Interval: 22.5DEG  
 Test Speed: HIGH  
 Temperature:25.3DEG  
 Operators:YSL  
 Test Date:2021-06-30

Range: 0 - 180DEG  
 Interval: 2.0DEG  
 Test System:EVERFINE GO-2000B\_V1 SYSTEM V2.00.450  
 Humidity:65.0%  
 Test Distance:5.749m [K=1.0000]  
 Remarks:

LUMINOUS DISTRIBUTION INTENSITY DATA

Test:U:23.998V I:0.2279A P:5.4691W PF:1.0000 Freq:0Hz Lamp Flux:1.22062x480 lm		
NAME: 127-155	TYPE:	WEIGHT:
SPEC.:	DIM.:	SERIAL No.: 1
MFR.: Tronix Lighting	SUR.: 0.005*1	Shielding Angle:

Table--1

UNIT: cd

C (DEG) □ (DEG)	0	22.5	45	67.5	90	112.5	135	157.5	180	202.5	225	247.5	270	292.5	315	337.5			
0	154	154	154	154	154	154	154	154	154	154	154	154	154	154	154	154			
5	154	154	154	154	154	154	154	154	154	154	154	154	154	154	154	154			
10	152	153	153	153	153	153	153	152	152	152	151	151	151	151	151	152			
15	150	151	151	151	152	152	151	151	150	149	149	149	149	149	149	149			
20	145	146	147	148	148	148	147	146	145	144	144	144	144	144	144	145			
25	141	142	144	145	145	145	144	142	141	140	140	140	140	140	140	140			
30	134	135	137	139	139	139	137	135	134	133	133	134	134	134	133	133			
35	128	130	132	135	135	135	132	130	128	127	128	129	130	129	128	127			
40	118	120	124	128	129	128	124	120	118	117	119	121	123	121	119	117			
45	110	113	118	122	124	123	118	113	110	110	113	116	118	116	113	110			
50	97.7	101	108	114	116	114	108	101	97.4	97.4	103	107	110	108	103	97.8			
55	88.5	93.0	101	109	111	109	101	92.9	88.1	88.7	95.5	102	104	102	95.9	89.3			
60	73.4	79.4	90.5	99.8	103	100	90.9	79.5	72.8	75.1	84.7	92.8	96.2	93.1	85.3	75.8			
65	62.6	70.2	83.4	94.1	97.7	94.3	83.8	70.3	62.0	65.7	77.7	87.4	91.2	87.8	78.5	66.6			
70	45.6	56.0	73.2	86.1	90.5	86.4	73.7	56.4	44.9	51.7	68.0	80.1	84.6	80.7	69.0	53.0			
75	34.0	47.0	67.2	81.5	86.2	81.8	67.8	47.5	33.3	43.0	62.6	75.3	79.7	75.6	63.7	44.5			
80	17.4	35.3	59.1	73.4	78.1	73.8	59.8	36.3	16.8	32.3	53.4	65.5	69.7	65.7	54.2	34.2			
85	8.06	29.3	52.0	66.5	71.3	66.9	52.8	30.3	7.50	25.5	44.8	56.5	60.7	56.6	45.3	27.0			
90	0.27	16.7	37.9	52.5	57.4	53.0	38.6	17.3	0.26	11.3	28.6	39.4	43.2	38.9	28.5	12.3			
95	0.33	6.05	25.5	40.1	44.9	40.6	26.3	6.55	0.29	0.48	2.89	12.1	16.4	11.0	3.30	0.52			
100	0.49	0.63	5.20	17.8	22.3	18.4	5.93	0.65	0.42	0.55	0.79	0.96	1.02	0.96	0.79	0.56			
105	0.60	0.70	0.94	4.71	8.27	5.39	0.95	0.73	0.52	0.63	0.83	1.00	1.05	1.01	0.85	0.64			
110	0.79	0.84	1.01	1.13	1.18	1.14	1.02	0.85	0.69	0.76	0.93	1.06	1.12	1.09	0.96	0.77			
115	0.91	0.93	1.09	1.18	1.22	1.19	1.09	0.95	0.80	0.85	0.99	1.12	1.17	1.14	1.03	0.86			
120	1.08	1.09	1.20	1.27	1.30	1.28	1.19	1.09	0.97	0.98	1.09	1.19	1.24	1.23	1.13	1.01			
125	1.19	1.20	1.28	1.34	1.36	1.34	1.26	1.18	1.07	1.07	1.15	1.24	1.28	1.28	1.20	1.10			
130	1.34	1.35	1.39	1.44	1.44	1.42	1.36	1.32	1.22	1.20	1.25	1.32	1.35	1.36	1.31	1.25			
135	1.43	1.44	1.47	1.50	1.50	1.48	1.43	1.40	1.31	1.29	1.31	1.37	1.40	1.41	1.38	1.34			
140	1.55	1.57	1.58	1.58	1.58	1.56	1.53	1.51	1.44	1.40	1.41	1.45	1.46	1.49	1.48	1.46			
145	1.62	1.65	1.66	1.64	1.63	1.63	1.59	1.58	1.52	1.47	1.47	1.50	1.50	1.54	1.55	1.54			
150	1.73	1.75	1.76	1.73	1.72	1.71	1.68	1.69	1.63	1.58	1.57	1.59	1.57	1.62	1.65	1.65			
155	1.79	1.82	1.83	1.79	1.78	1.77	1.73	1.75	1.71	1.65	1.63	1.65	1.64	1.67	1.72	1.73			
160	1.90	1.93	1.91	1.88	1.89	1.84	1.84	1.87	1.83	1.78	1.74	1.75	1.75	1.76	1.82	1.85			
165	1.97	1.99	1.97	1.93	1.95	1.90	1.91	1.94	1.91	1.87	1.83	1.82	1.83	1.83	1.89	1.93			
170	2.08	2.09	2.07	2.03	2.03	2.00	2.02	2.06	2.03	2.00	1.96	1.94	1.95	1.95	2.01	2.06			
175	2.15	2.14	2.13	2.10	2.09	2.07	2.09	2.14	2.12	2.09	2.05	2.03	2.03	2.03	2.09	2.14			
180	2.22	2.20	2.18	2.15	2.16	2.14	2.19	2.23	2.22	2.20	2.18	2.15	2.16	2.14	2.19	2.23			

C Range: 0 - 360DEG  
 C Interval: 22.5DEG  
 Test Speed: HIGH  
 Temperature:25.3DEG  
 Operators:YSL  
 Test Date:2021-06-30

□ Range: 0 - 180DEG  
 □ Interval: 2.0DEG  
 Test System:EVERFINE GO-2000B\_V1 SYSTEM V2.00.450  
 Humidity:65.0%  
 Test Distance:5.749m [K=1.0000]  
 Remarks: